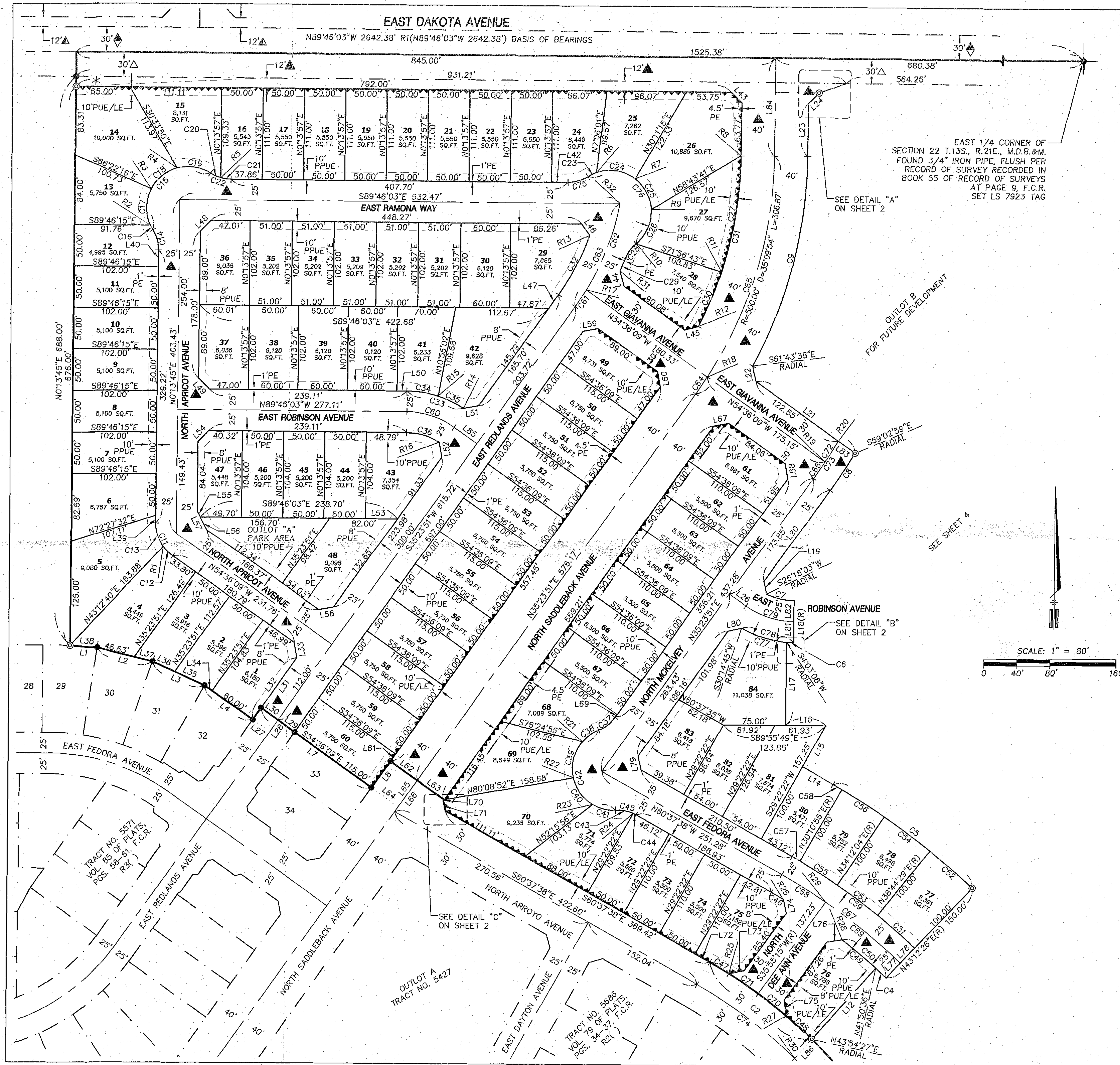




# Street Names, Addresses and (Lot Numbers) for T6163

Prepared on Mon Oct 22 13:32:06 2018





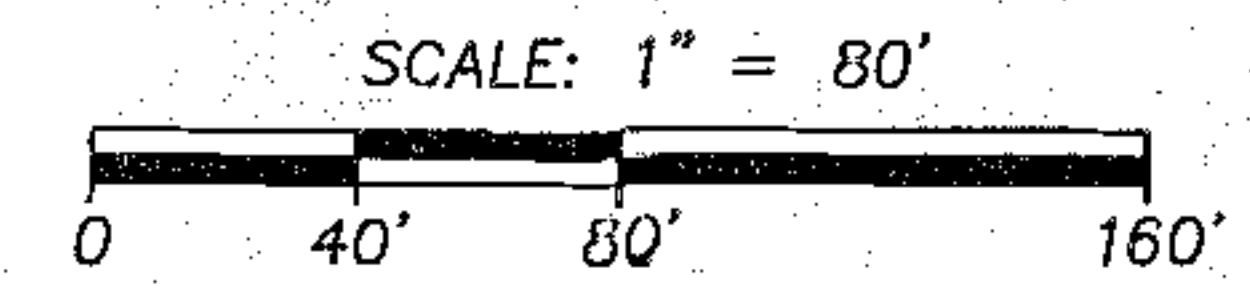
# FINAL MAP OF TRACT NO. 6163

PHASE 2 OF VESTING TENTATIVE MAP NO. 5571  
 BEING A MERGER OF AND RESUBDIVISION OF OUTLOT A OF TRACT 5571, A PORTION OF PARCEL B & THE UNSUBDIVIDED REMAINDER OF PARCEL A OF PARCEL MAP 2004-29 IN THE SOUTHEAST 1/4 OF SECTION 22, T.13S., R.21E., M.D.B.&M. IN THE CITY OF FRESNO, COUNTY OF FRESNO, STATE OF CALIFORNIA SURVEYED AND PLATTED IN JUNE 2016 BY YAMABE & HORN ENGINEERING, INC. CONSISTING OF FIVE SHEETS, SHEET 3 OF 5

EAST 1/4 CORNER OF SECTION 22 T.13S., R.21E., M.D.B.&M. FOUND 3/4" IRON PIPE, FLUSH PER RECORD OF SURVEY RECORDED IN BOOK 55 OF RECORD OF SURVEYS AT PAGE 9, F.C.R. SET LS 7923 TAG

## LEGEND

- MONUMENT FOUND & ACCEPTED 3/4" IRON PIPE DOWN 6" TAGGED LS 6919 UNLESS OTHERWISE NOTED
- ⊙ SET 3/4" X 30" IRON PIPE UP 4" IN 6" DIAMETER X 30" P.C.C. MONUMENT, DOWN 6" TAGGED LS 7923
- R1 ( ) RECORD DATA PER PARCEL MAP NO. 2004-29 RECORDED IN BOOK 65 OF PARCEL MAPS AT PAGES 63-64, F.C.R.
- R2 ( ) RECORD DATA PER TRACT NO. 5686 RECORDED IN VOLUME 79 OF PLATS, PAGES 34-37, F.C.R.
- R3 ( ) RECORD DATA PER TRACT NO. 5571 RECORDED IN VOLUME 85 OF PLATS, PAGES 58-61, F.C.R.
- R4 ( ) RECORD DATA PER DOCUMENT NO. 2005-0146342 RECORDED JUNE 30, 2005, F.C.R.
- CR CORNER RECORD ON FILE WITH THE FRESNO COUNTY SURVEYOR
- O.R.F.C. OFFICIAL RECORDS FRESNO COUNTY
- F.C.R. FRESNO COUNTY RECORDS
- CFR CALCULATED FROM RECORD DATA
- (R) RADIAL
- M.D.B.&M. MOUNT DIABLO BASE AND MERIDIAN
- SECTION LINE
- EXISTING PROPERTY LINE/RIGHT OF WAY LINE
- - - EASEMENT LINE
- ..... EXTENSION OF LINE TO DIMENSION POINT SHOWN
- INDICATES LIMITS OF SUBDIVISION
- INDICATES RELINQUISHMENT OF DIRECT ACCESS RIGHTS
- △ PUBLIC STREET EASEMENT PREVIOUSLY DEDICATED PER PARCEL MAP NO. 2004-29 RECORDED IN BOOK 65 OF PARCEL MAPS AT PAGES 63-64, F.C.R.
- ◆ RIGHT OF WAY PER FINCHER'S COLONY NO OFFER OF DEDICATION OR ACCEPTANCE BY LOCAL AGENCY EXISTING
- ▲ PUBLIC STREET EASEMENT PREVIOUSLY DEDICATED PER TRACT NO. 5481 RECORDED IN VOLUME 79 OF PLATS, PAGES 11-17, F.C.R.
- \* PUBLIC STREET EASEMENT PREVIOUSLY GRANTED PER EASEMENT DEED RECORDED JUNE 22, 2010 AS DOC. NO. 2010-0079294, O.R.F.C.



THE REAL PROPERTY DESCRIBED BELOW IS DEDICATED AS AN EASEMENT FOR PUBLIC PURPOSES

- ▲ NOW OFFERED FOR DEDICATION FOR PUBLIC STREET EASEMENT PURPOSES
- PPUE PLANTING & PUBLIC UTILITY EASEMENT NOW OFFERED FOR DEDICATION FOR PUBLIC USE.
- PUE PUBLIC UTILITY EASEMENT NOW OFFERED FOR DEDICATION FOR PUBLIC USE.
- PE PEDESTRIAN EASEMENT NOW OFFERED FOR DEDICATION FOR PUBLIC USE
- LE LANDSCAPE EASEMENT NOW OFFERED FOR DEDICATION FOR PUBLIC USE MAINTENANCE OF LANDSCAPING TO BE THE RESPONSIBILITY OF THE MASTER HOMEOWNERS ASSOCIATION.

### BASIS OF BEARINGS:

THE NORTH LINE OF THE SOUTHEAST QUARTER OF SECTION 22, TOWNSHIP 13 SOUTH, RANGE 21 EAST, MOUNT DIABLO BASE AND MERIDIAN AS SHOWN ON PARCEL MAP NO. 2004-29 RECORDED IN BOOK 65 OF PARCEL MAPS AT PAGES 63-64, F.C.R. TAKEN TO BE NORTH 89°46'03" WEST.

### NOTE:

SET 3/4" x 30" IRON PIPE DOWN 6" TAGGED LS 7923 OR BRASS TAG STAMPED LS 7923 FLUSH WITH CONCRETE SURFACE AT ALL LOT CORNERS, ANGLE POINT OR POINTS OF CURVATURE, UNLESS OTHERWISE NOTED.

SEE SHEET 5 FOR COMPLETE LINE, CURVE & RADIAL TABLES

OUTLOT A—USE WILL BE FOR PUBLIC PARK PURPOSES AND OWNERSHIP AND MAINTENANCE TO REMAIN AND BE THE RESPONSIBILITY OF THE MASTER HOMEOWNERS ASSOCIATION.

OUTLOT B—USE WILL BE FOR FUTURE DEVELOPMENT

**YAMABE & HORN ENGINEERING, INC.**

2985 N. BURLI AVE.  
 SUITE 101  
 FRESNO, CA 93727  
 TEL (559) 244-3123  
 FAX (559) 244-3120