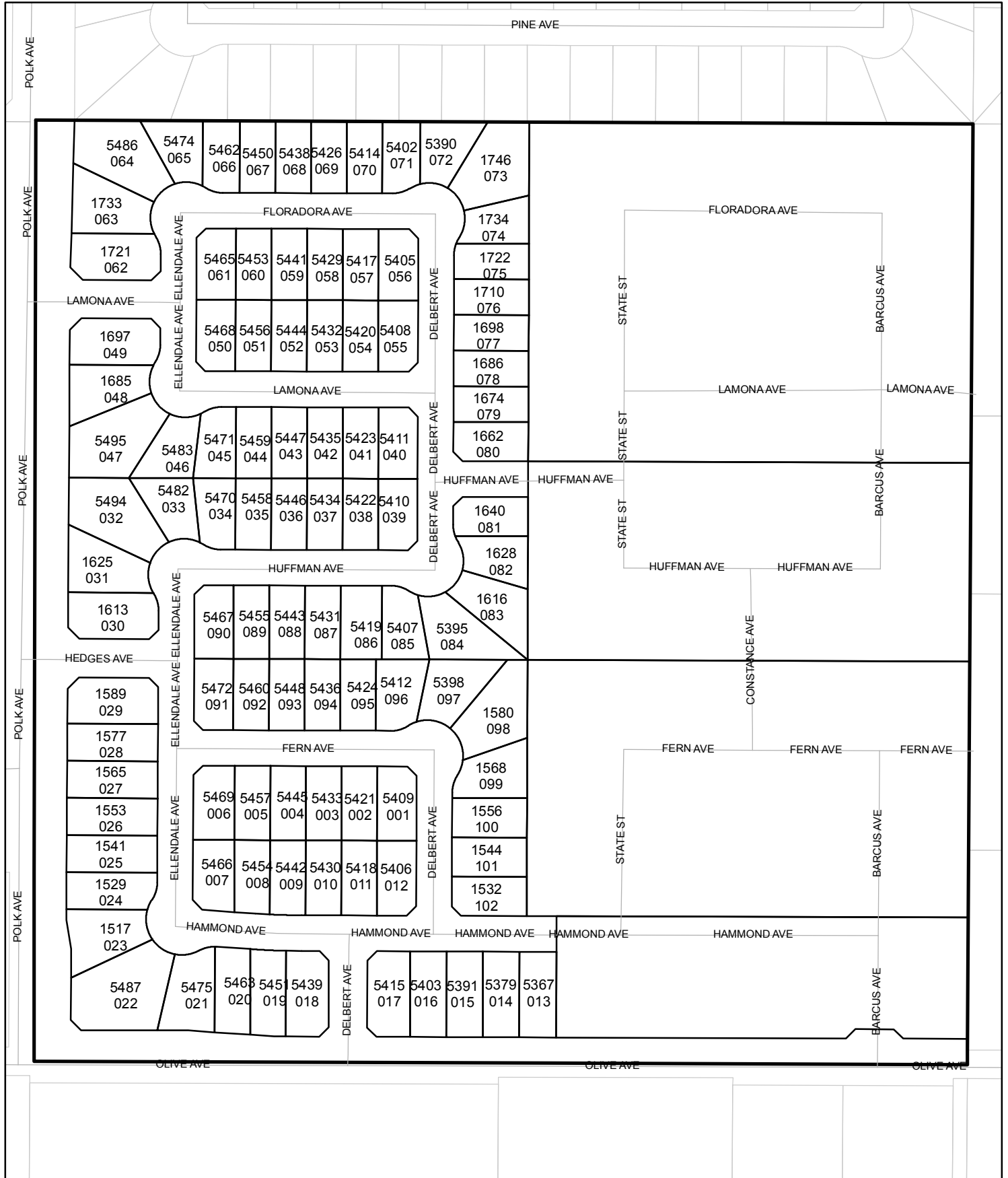




Street Names, Addresses and (Lot Numbers) for T6139

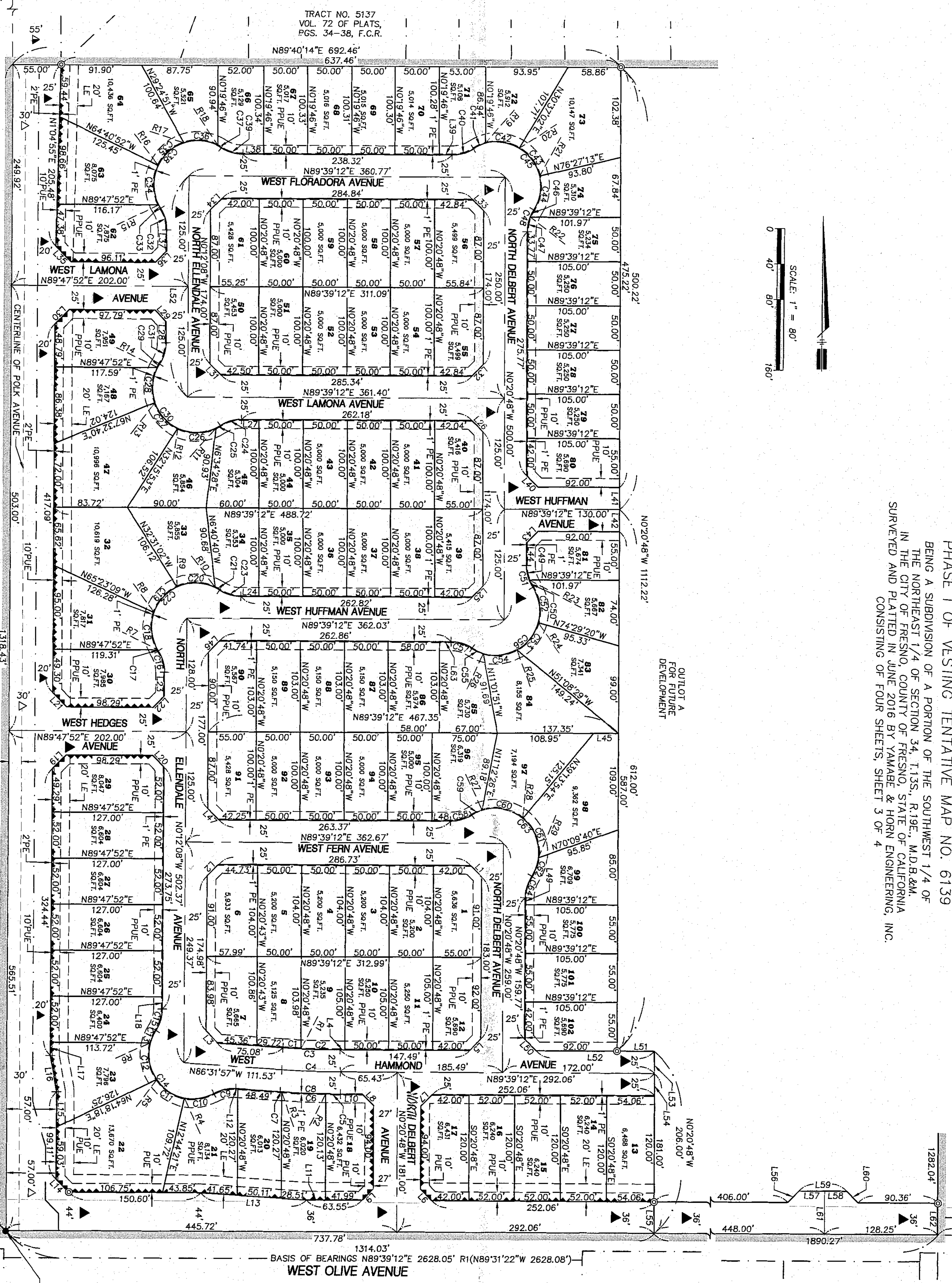
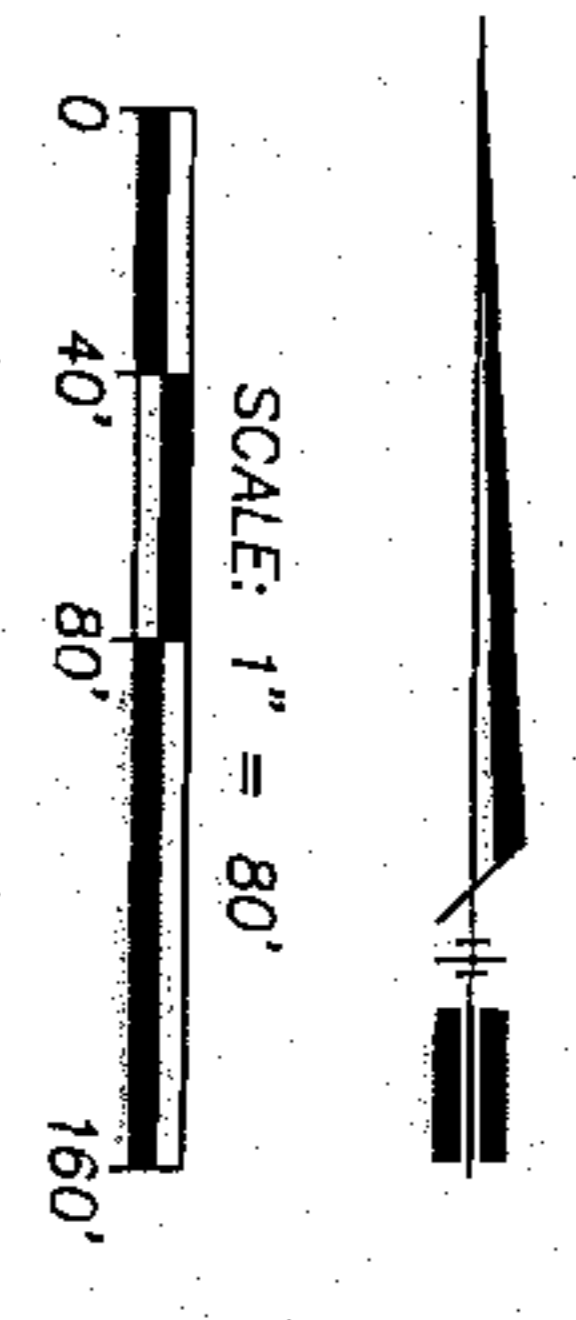
Prepared on Fri Dec 22 20:36:28 2017



FINAL MAP OF TRACT NO. 6139

PHASE I OF VESTING TENTATIVE MAP NO. 6139
 BEING A SUBDIVISION OF A PORTION OF THE SOUTHWEST 1/4 OF THE NORTHEAST 1/4 OF SECTION 34, T.13S., R.19E., M.D.B.&M. IN THE CITY OF FRESNO, COUNTY OF FRESNO, STATE OF CALIFORNIA SURVEYED AND PLATTED IN JUNE 2016 BY YAMABE & HORN ENGINEERING, INC. CONSISTING OF FOUR SHEETS, SHEET 3 OF 4

EAST 1/4 CORNER OF SECTION 34, T.13S., R.19E., M.D.B.&M. FOUND FRESNO COUNTY BRASS CAP MONUMENT IN HANDWELL PER CR 2916



NORTH 1/4 CORNER OF SECTION 34, T.13S., R.19E., M.D.B.&M. FOUND SCORPE ON MANHOLE VERIFIED POSITION PER TIES ON CR 7818

TRACT NO. 5082 VOL. 67 OF PLATS PDS. 07-08, F.C.R.

15' CITY OF FRESNO PIPELINE EASEMENT RECORDED 9/14/1976 IN BOOK 6659 PAGE 372 AS DOCUMENT NO. 81011, O.R.F.C.

CENTER OF 1/4 CORNER FOUND SCORPE ON MANHOLE VERIFIED POSITION PER TIES ON CR 2918

2885 N. BURL AVE. SUITE 101 FRESNO, CA 93727
YAMABE & HORN ENGINEERING, INC.
 TEL (559) 244-9129 FAX (559) 244-9120

LEGEND

- MONUMENT FOUND & ACCEPTED 3/4" IRON PIPE DOWN 6" TAGGED LS 7923 UNLESS OTHERWISE NOTED
- SET 3/4" X 30" IRON PIPE UP 4" IN 6" DIAMETER X 30" F.C.C. MONUMENT, DOWN 8" TAGGED LS 7923
- RI () RECORD DATA PER TRACT NO. 5137 RECORDED IN VOLUME 72 OF PLATS, PAGES 34 THROUGH 38, F.C.R.
- R2 () RECORD DATA PER TRACT NO. 5189 MCKINLEY 1 RECORDED IN VOLUME 77 OF PLATS, PAGES 7-10, F.C.R. CORNER RECORD ON FILE WITH THE FRESNO COUNTY SURVEYOR
- OFFICIAL RECORDS FRESNO COUNTY
- FRESNO COUNTY RECORDS
- CALCULATED FROM RECORD DATA
- SECTION LINE
- EXISTING PROPERTY LINE
- EASEMENT LINE
- INDICATES LIMITS OF SUBDIVISION
- PUBLIC STREET EASEMENT PREVIOUSLY GRANTED PER THE EASEMENT DEED RECORDED FEBRUARY 19, 2003 AS DOCUMENT NO. 2003-0039559, O.R.F.C.
- PUBLIC STREET EASEMENT PREVIOUSLY GRANTED PER THE EASEMENT DEED RECORDED MARCH 30, 1999 AS DOCUMENT NO. 1999-0046324, O.R.F.C.
- INDICATES RELINQUISHMENT OF DIRECT ACCESS RIGHTS

NOTE

SET 3/4" X 30" IRON PIPE DOWN 6" TAGGED LS 7923 OR BRASS TAG SAMPLED LS 7923 FLUSH WITH CONCRETE SURFACE AT ALL LOT CORNERS, QUARTER OF SECTION 34, TOWNSHIP 13 SOUTH, RANGE 19 EAST, MOUNT DIABLO BASE AND MERIDIAN, TAKEN TO BE NORTH 89°39'12" EAST.

NOTE

THE REAL PROPERTY DESCRIBED BELOW IS DEDICATED AS AN EASEMENT FOR PUBLIC PURPOSES

- ▲ NOW OFFERED FOR DEDICATION FOR PUBLIC STREET EASEMENT PURPOSES
- ▲ PE PLANTING & PUBLIC UTILITY EASEMENT NOW OFFERED FOR DEDICATION FOR PUBLIC USE
- ▲ PE PEDESTRIAN EASEMENT NOW OFFERED FOR DEDICATION FOR PUBLIC USE
- ▲ PE LANDSCAPE EASEMENT NOW OFFERED FOR DEDICATION FOR PUBLIC USE
- ▲ PE PUBLIC UTILITY EASEMENT NOW OFFERED FOR DEDICATION FOR PUBLIC USE

NOTE

THE REAL PROPERTY DESCRIBED BELOW IS DEDICATED AS AN EASEMENT FOR PUBLIC PURPOSES

- ▲ NOW OFFERED FOR DEDICATION FOR PUBLIC STREET EASEMENT PURPOSES
- ▲ PE PLANTING & PUBLIC UTILITY EASEMENT NOW OFFERED FOR DEDICATION FOR PUBLIC USE
- ▲ PE PEDESTRIAN EASEMENT NOW OFFERED FOR DEDICATION FOR PUBLIC USE
- ▲ PE LANDSCAPE EASEMENT NOW OFFERED FOR DEDICATION FOR PUBLIC USE
- ▲ PE PUBLIC UTILITY EASEMENT NOW OFFERED FOR DEDICATION FOR PUBLIC USE