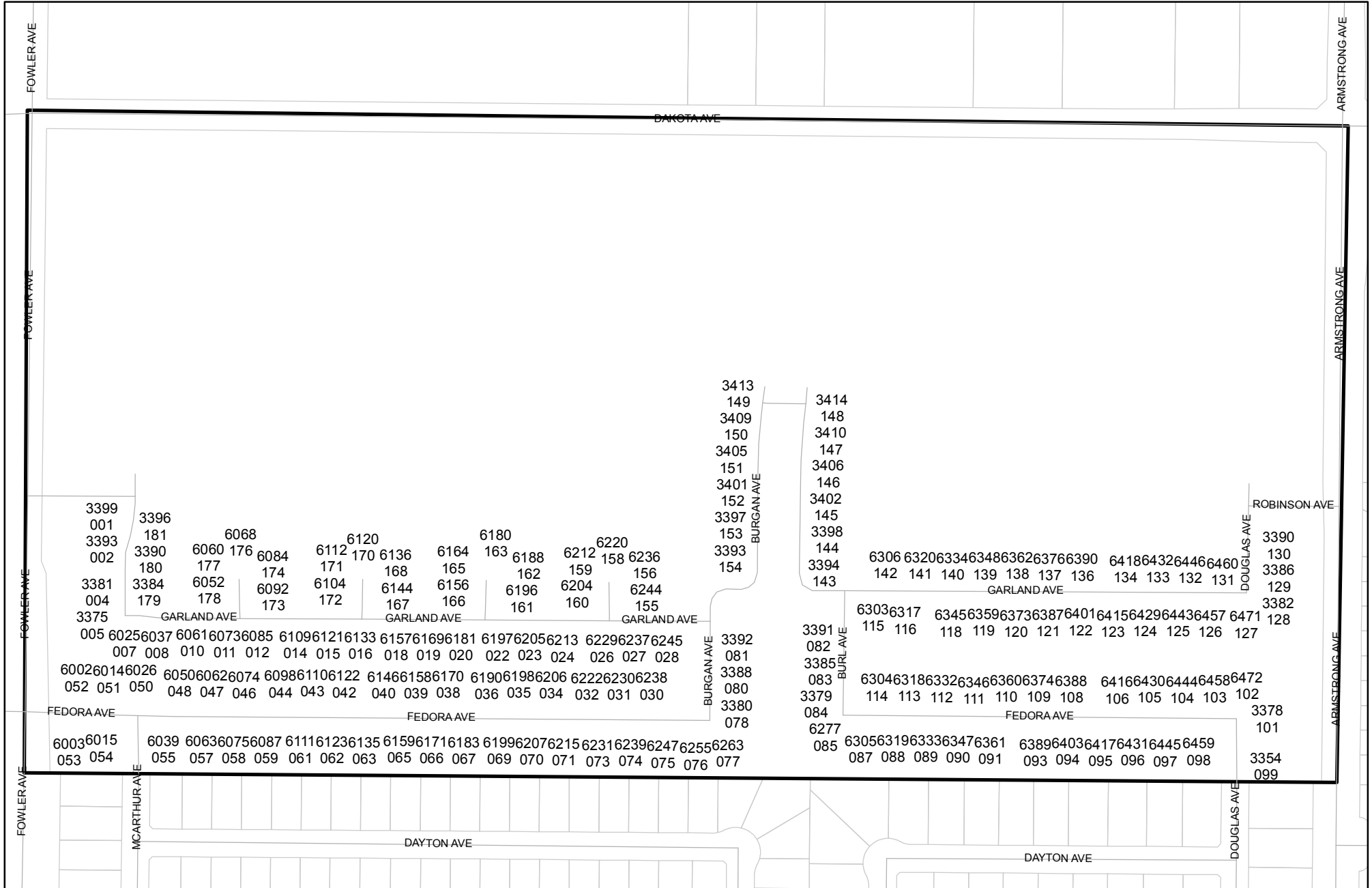




Prepared on Fri Aug 11 21:37:56 2017

# Street Names, Addresses and (Lot Numbers) for T6131



# FINAL MAP OF TRACT NO. 6131

## NOTE

1. SET 3/4" X 30" IRON PIPE, DOWN 0.5', TAGGED "PLS 8861", AT ALL LOT CORNERS, BLOCK CORNERS, ANGLE POINTS AND CURVE POINTS
2. REAR LOT CORNERS FOR LOTS 53-77 AND 85-98 ARE MONUMENTED AS WITNESS CORNERS AND ARE MARKED BY A 3/4" X 30" IRON PIPE, DOWN 0.5', TAGGED "PLS 8861". SEE SHEET 7 FOR DETAIL.
3. ALL CURVES ARE TANGENTIAL UNLESS A RADIAL BEARING IS SHOWN.
4. SEE SHEET 7 FOR ALL LINE, CURVE AND RADIAL DATA TABLES.

THE REAL PROPERTY DESCRIBED BELOW IS DEDICATED AS AN EASEMENT FOR PUBLIC PURPOSES.

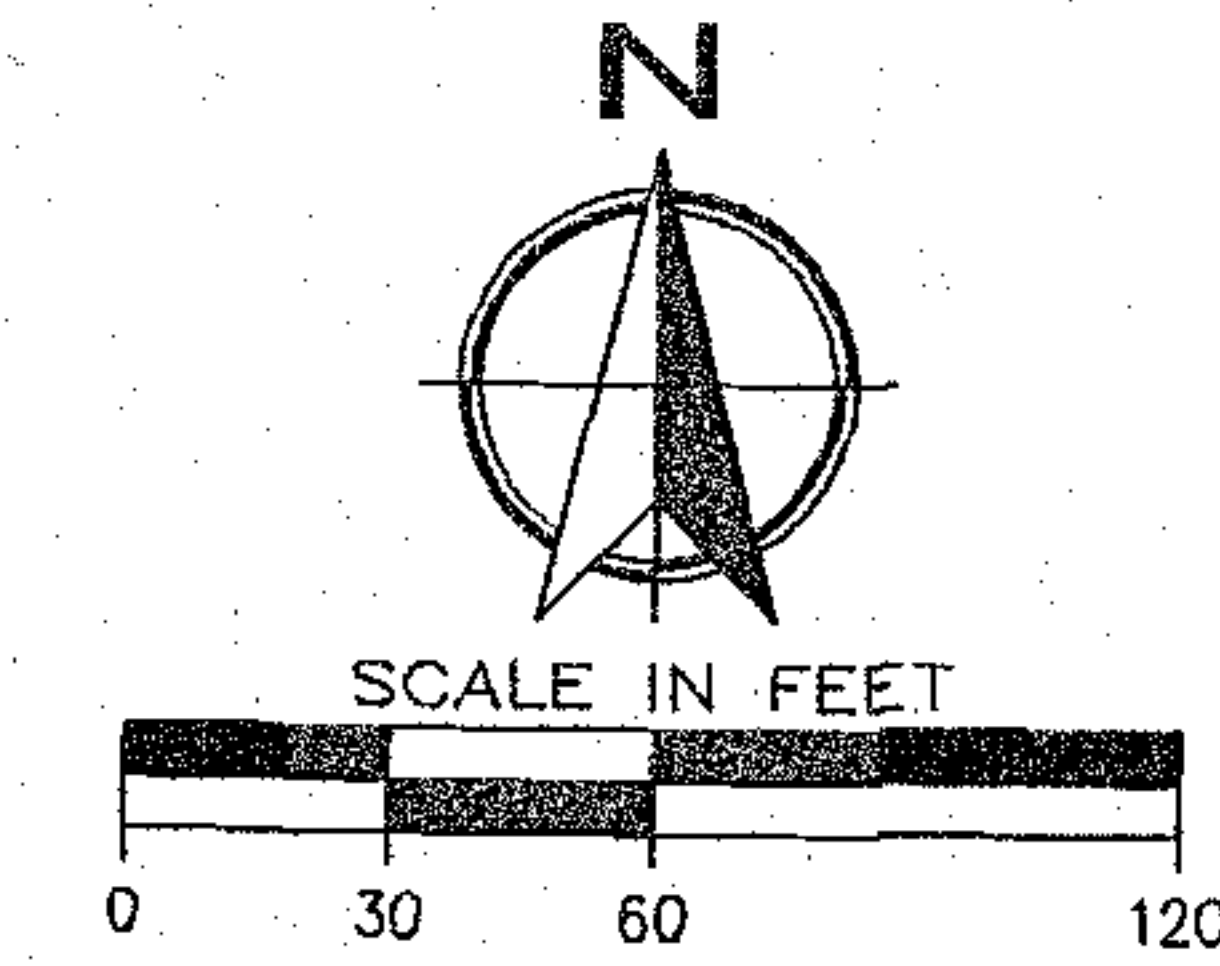
- P.U.E. PUBLIC UTILITY EASEMENT  
 P.E. PEDESTRIAN EASEMENT  
 L.E. LANDSCAPING EASEMENT  
 P.P.U.E. PLANTING AND PUBLIC UTILITY EASEMENT  
 EASEMENT NOW OFFERED FOR DEDICATION

THE REAL PROPERTY DESCRIBED BELOW IS DEDICATED IN FEE FOR PUBLIC PURPOSES.

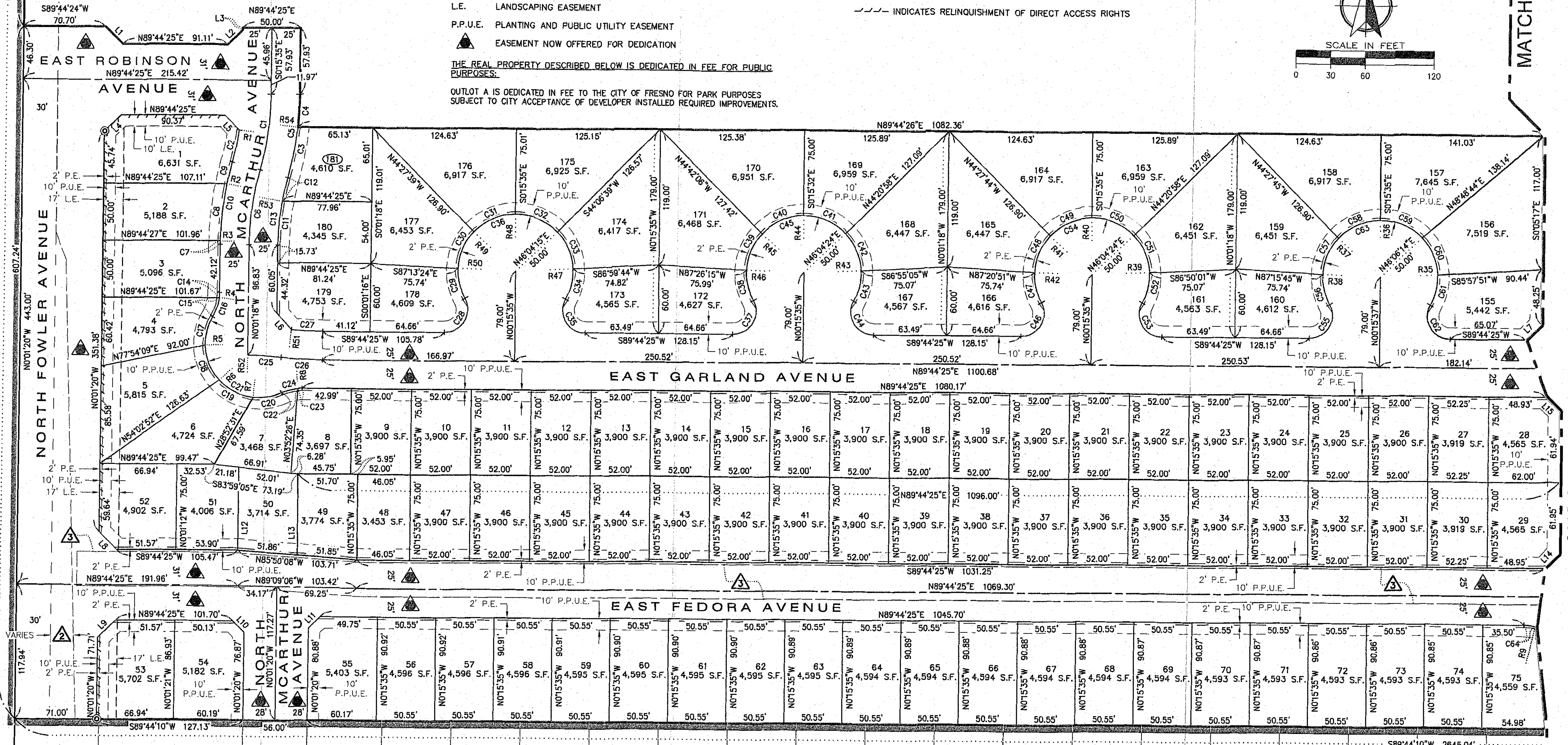
OUTLOT A IS DEDICATED IN FEE TO THE CITY OF FRESNO FOR PARK PURPOSES SUBJECT TO CITY ACCEPTANCE OF DEVELOPER INSTALLED REQUIRED IMPROVEMENTS.

## LEGEND

- MONUMENT FOUND AND ACCEPTED, UNLESS OTHERWISE NOTED.
- SET 3/4" O.D. IRON PIPE, 30" LONG, UP 4", IN 6" DIAMETER X 30" P.C.C. MONUMENT DOWN 6" TAGGED "PLS 8861".
- PREVIOUSLY DEDICATED FOR PUBLIC STREET PURPOSES PER DEED OF EASEMENT PER DOCUMENT NO. 2010-0077834 AND 2010-0077835, O.R.F.C.
- EASEMENT PREVIOUSLY DEDICATED FOR PUBLIC STREET PURPOSES PER PER DOCUMENT NO. 2004-0163444, O.R.F.C.
- PREVIOUSLY DEDICATED FOR UNDERGROUND STORM DRAINAGE PIPELINE PURPOSES PER GRANT OF EASEMENT NO. 2015-0119415, O.R.F.C.
- DISTINCTIVE BORDER INDICATES LIMITS OF THIS SUBDIVISION
- INDICATES RELINQUISHMENT OF DIRECT ACCESS RIGHTS



MATCHLINE: SEE SHEET 4



MATCHLINE: SEE SHEET 4


TRACT NO. 5281  
 VOL 71, PG 99-100, F.C.R.

# FINAL MAP OF TRACT NO. 6131

### NOTE

1. SET 3/4" X 30" IRON PIPE, DOWN 0.5', TAGGED "PLS 8861", AT ALL LOT CORNERS, BLOCK CORNERS, ANGLE POINTS AND CURVE POINTS.
2. REAR LOT CORNERS FOR LOTS 53-77 AND 85-98 ARE MONUMENTED AS WITNESS CORNERS AND ARE MARKED BY A 3/4" X 30" IRON PIPE, DOWN 0.5', TAGGED "PLS 8861". SEE SHEET 7 FOR DETAIL.
3. ALL CURVES ARE TANGENTIAL UNLESS A RADIAL BEARING IS SHOWN.
4. SEE SHEET 7 FOR ALL LINE, CURVE AND RADIAL DATA TABLES.

THE REAL PROPERTY DESCRIBED BELOW IS DEDICATED AS AN EASEMENT FOR PUBLIC PURPOSES:

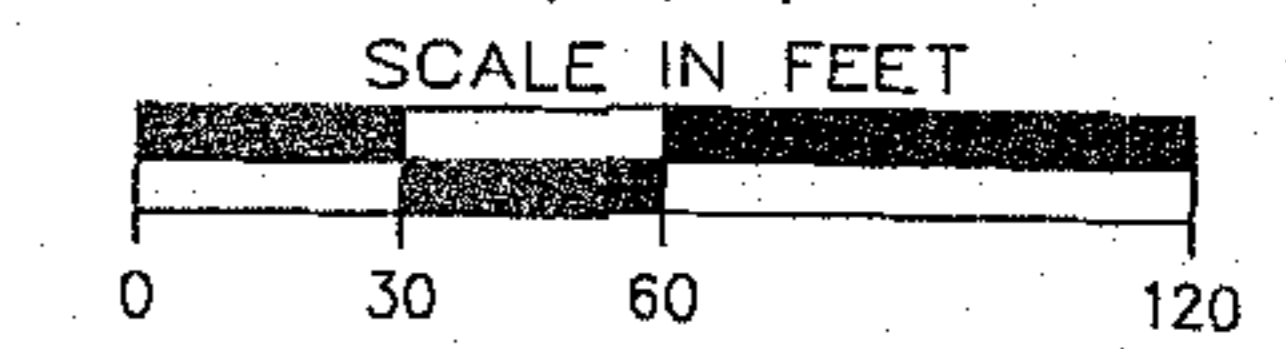
- P.U.E. PUBLIC UTILITY EASEMENT  
 P.E. PEDESTRIAN EASEMENT  
 L.E. LANDSCAPING EASEMENT  
 P.P.U.E. PLANTING AND PUBLIC UTILITY EASEMENT  
 EASEMENT NOW OFFERED FOR DEDICATION

THE REAL PROPERTY DESCRIBED BELOW IS DEDICATED IN FEE FOR PUBLIC PURPOSES:

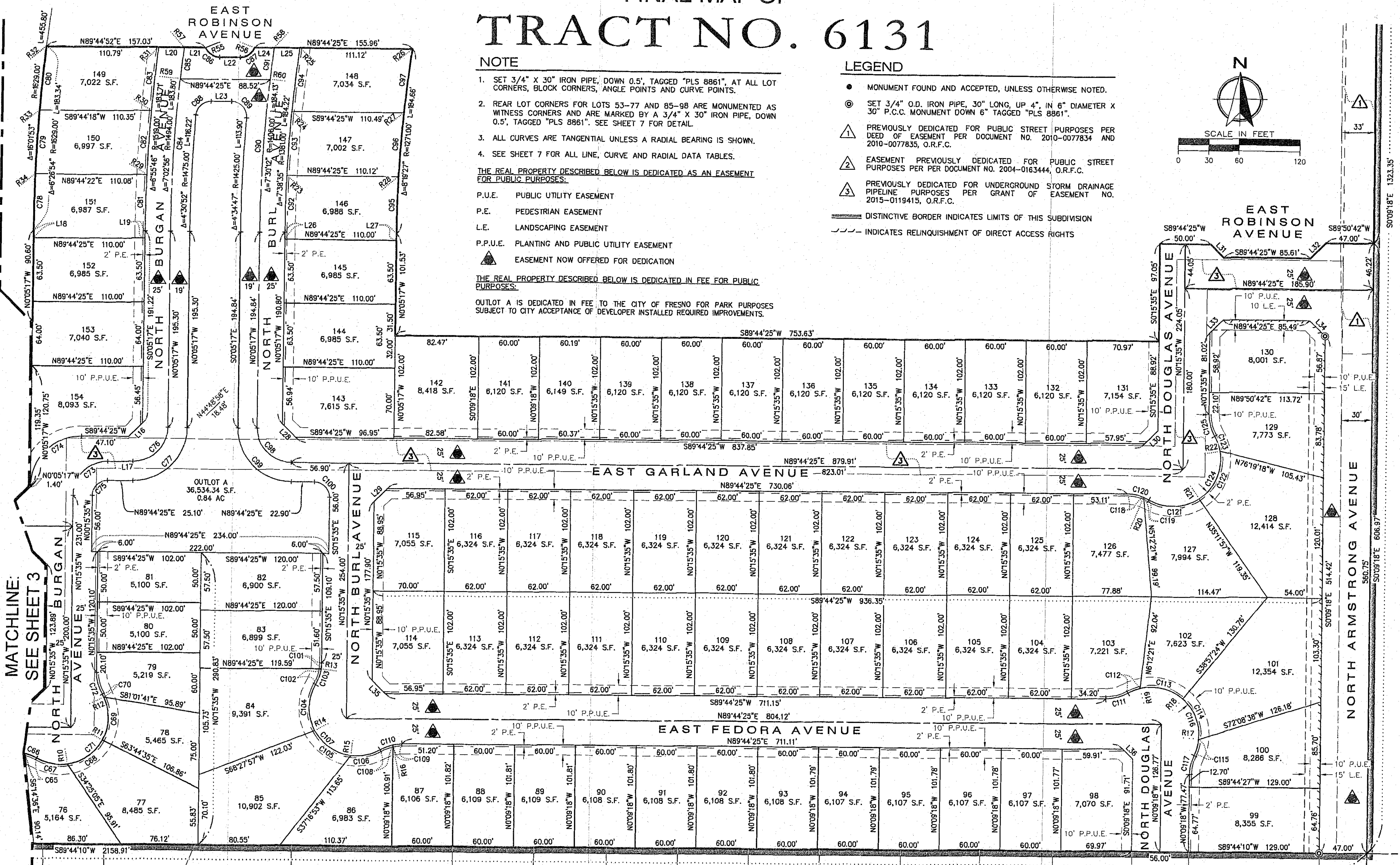
OUTLOT A IS DEDICATED IN FEE TO THE CITY OF FRESNO FOR PARK PURPOSES SUBJECT TO CITY ACCEPTANCE OF DEVELOPER INSTALLED REQUIRED IMPROVEMENTS.

### LEGEND

- MONUMENT FOUND AND ACCEPTED, UNLESS OTHERWISE NOTED.
- ⊙ SET 3/4" O.D. IRON PIPE, 30" LONG, UP 4", IN 6" DIAMETER X 30" P.C.C. MONUMENT DOWN 6" TAGGED "PLS 8861".
- ⚠ PREVIOUSLY DEDICATED FOR PUBLIC STREET PURPOSES PER DEED OF EASEMENT PER DOCUMENT NO. 2010-0077834 AND 2010-0077835, O.R.F.C.
- ⚠ EASEMENT PREVIOUSLY DEDICATED FOR PUBLIC STREET PURPOSES PER PER DOCUMENT NO. 2004-0163444, O.R.F.C.
- ⚠ PREVIOUSLY DEDICATED FOR UNDERGROUND STORM DRAINAGE PIPELINE PURPOSES PER GRANT OF EASEMENT NO. 2015-0119415, O.R.F.C.
- DISTINCTIVE BORDER INDICATES LIMITS OF THIS SUBDIVISION
- - - INDICATES RELINQUISHMENT OF DIRECT ACCESS RIGHTS



MATCHLINE: SEE SHEET 3



TRACT NO. 5517  
VOL 75, PG 56-59, F.C.R.