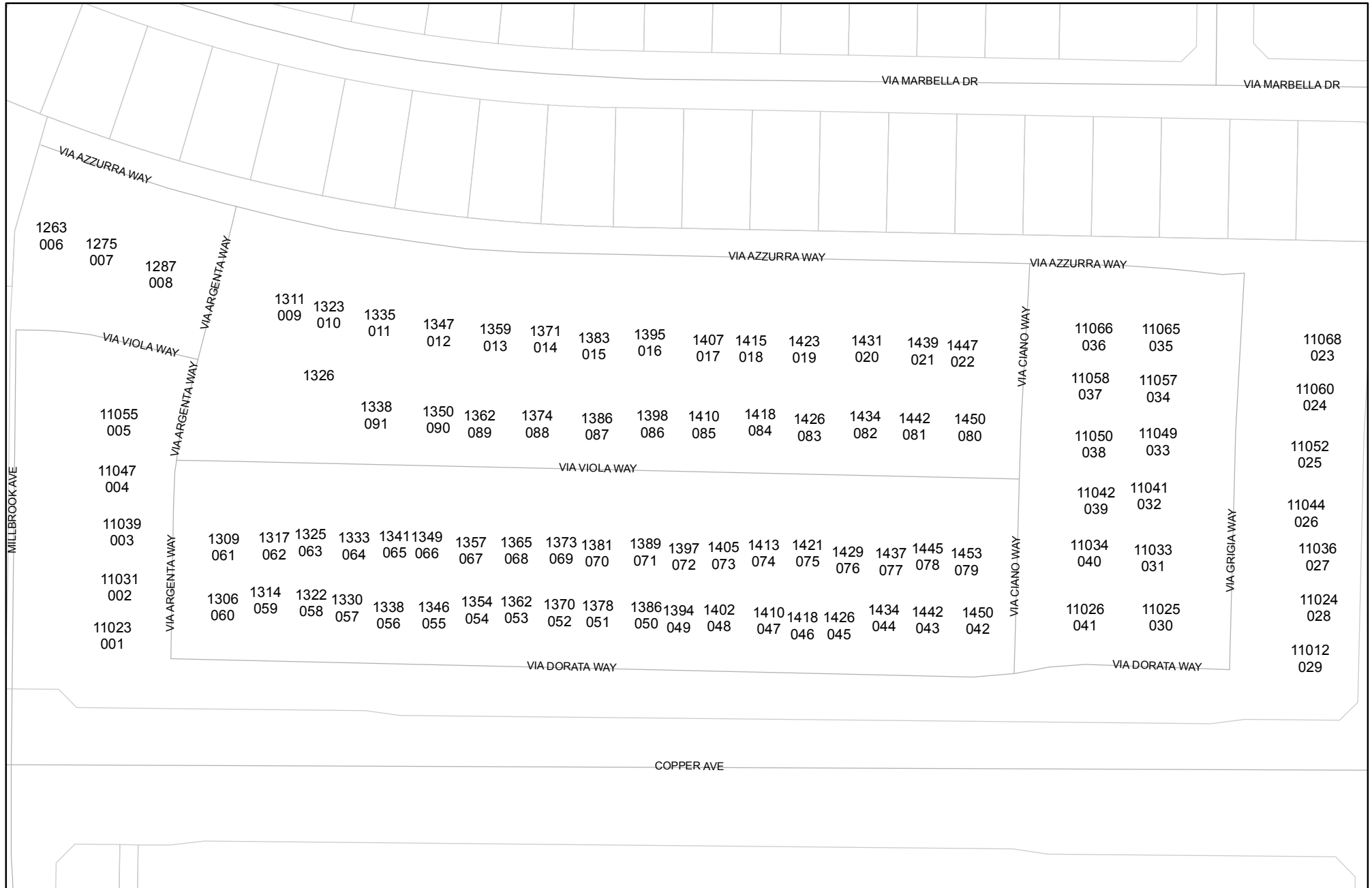




Street Names, Addresses and (Lot Numbers) for T6099

Prepared on Wed Jun 14 21:42:12 2017



TRACT NO. 6099

A PLANNED UNIT DEVELOPMENT

BEING A SUBDIVISION OF OUTLOT L OF THE AMENDING MAP OF TRACT NO. 5205, RECORDED IN VOLUME 76 OF PLATS, PAGES 46 THROUGH 70, FRESNO COUNTY RECORDS

IN THE CITY OF FRESNO, COUNTY OF FRESNO, STATE OF CALIFORNIA
SURVEYED AND PLATTED IN JANUARY 2017, BY BRET A. GIANNETTA

CONSISTING OF THREE SHEETS SHEET THREE OF THREE SHEETS

CURVE	DELTA	RADIUS	LENGTH
C1	125°04'53"	55.00'	120.07'
C2	89°38'46"	55.00'	86.05'
C3	35°26'07"	55.00'	34.02'
C4	36°52'13"	50.00'	32.18'
C5	13°25'02"	300.00'	70.25'
C6	05°29'34"	300.00'	28.76'
C7	07°55'28"	300.00'	41.49'
C8	13°25'02"	400.00'	93.67'
C9	05°51'00"	400.00'	40.84'
C10	07°34'02"	400.00'	52.83'
C11	14°26'16"	1,491.40'	375.81'
C12	06°51'29"	1,491.40'	178.51'
C13	07°34'47"	1,491.40'	197.30'
C14	05°20'22"	800.00'	74.55'
C15	08°57'00"	250.00'	39.05'
C16	08°09'23"	250.00'	35.59'
C17	00°47'37"	250.00'	3.46'
C18	09°08'15"	250.00'	39.87'
C19	04°28'58"	415.00'	32.47'
C20	10°43'11"	40.00'	7.48'
C21	31°57'53"	65.00'	36.26'
C22	05°30'26"	1,513.90'	145.51'
C23	02°04'41"	1,513.90'	54.91'
C24	01°46'03"	1,513.90'	46.70'
C25	01°39'42"	1,513.90'	43.90'

CURVE	DELTA	RADIUS	LENGTH
C26	31°46'42"	11.00'	6.10'
C27	28°08'37"	11.00'	5.02'
C28	06°18'08"	1,513.90'	166.52'
C29	01°43'21"	1,513.90'	45.51'
C30	01°37'39"	1,513.90'	43.00'
C31	01°44'27"	1,513.90'	46.00'
C32	01°12'41"	1,513.90'	32.01'
C33	05°20'22"	822.50'	76.65'
C34	00°58'30"	822.50'	14.00'
C35	03°12'17"	822.50'	46.00'
C36	01°09'35"	822.50'	16.65'
C37	35°06'01"	11.00'	6.74'
C38	44°30'42"	15.00'	11.65'
C39	23°14'56"	15.20'	6.17'
C40	22°55'50"	15.20'	6.08'
C41	04°28'58"	388.00'	30.36'
C42	34°07'32"	11.00'	6.55'
C43	33°03'23"	11.00'	6.35'
C44	76°34'32"	11.00'	14.70'
C45	36°03'59"	11.00'	6.92'
C46	30°40'41"	11.00'	5.89'
C47	70°11'26"	11.00'	13.48'
C48	22°59'57"	15.20'	6.10'
C49	101°49'29"	19.50'	34.65'

RADIAL	DIRECTION
R1	S 52°30'42" W
R2	S 87°56'49" E
R3	N 06°06'39 E
R4	N 83°31'55" W
R5	S 07°02'25" E
R6	S 20°53'36" W
R7	N 78°39'44" W
R8	N 34°22'18" E
R9	S 20°49'12" W
R10	S 18°44'31" W
R11	S 16°58'28" W

RADIAL	DIRECTION
R12	S 15°18'46" W
R13	N 47°05'28" E
R14	N 13°23'09 W
R15	S 12°45'28" W
R16	S 11°02'07" W
R17	S 09°24'28" W
R18	S 07°40'01" W
R19	S 06°27'20" W
R20	S 05°28'50" W
R21	S 02°16'33" W
R22	N 36°12'59" E

RADIAL	DIRECTION
R23	N 42°16'34" W
R24	S 65°26'51" E
R25	N 70°16'54" W
R26	N 52°39'44" W
R27	S 58°14'50" W
R28	S 75°27'34" E
R29	S 37°10'57" W
R30	N 29°33'43" W
R31	N 71°18'24" E
R32	S 21°52'59" E

LEGEND:

- MONUMENT FOUND AND ACCEPTED AS NOTED
- SET 3/4" IRON PIPE, 30" LONG, 6" DOWN, TAGGED LS 8177, OR AS NOTED.
- SET 3/4" IRON PIPE, 30" LONG, 4" UP IN 6" DIAMETER x 30" P.C.C. MONUMENT, DOWN 6" BELOW GROUND, TAGGED LS 8177.
- () RECORD DATA AS PER AMENDING MAP OF TRACT NO. 5205, RECORDED IN VOLUME 76 OF PLATS, AT PAGES 46 THROUGH 70, FRESNO COUNTY RECORDS
- △ PREVIOUSLY DEDICATED FOR PUBLIC STREET EASEMENT PURPOSES, PER AMENDING MAP OF TRACT NO. 5205, RECORDED IN VOLUME 76 OF PLATS, AT PAGES 46 THROUGH 70, FRESNO COUNTY RECORDS
- △ PREVIOUSLY DEDICATED FOR MULTI PURPOSE TRAIL EASEMENT PURPOSES, PER AMENDING MAP OF TRACT NO. 5205, RECORDED IN VOLUME 76 OF PLATS, AT PAGES 46 THROUGH 70, FRESNO COUNTY RECORDS
- △ PREVIOUSLY DEDICATED FOR PG&E EASEMENT PURPOSES, PER DOCUMENT AS RECORDED JUNE 19, 2006 AS DOC. NO. 2006-0127434 F.C.R.
- △ 10' PG&E EASEMENT FOR PUBLIC UTILITIES RECORDED AS DOCUMENT NO. 97048897, O.R.F.C.
- △ POLE LINE EASEMENT 27' NORTH OF SECTION LINE RECORDED SEPTEMBER 20, 1946 AS DOCUMENT NO. 66612, BOOK 2419 PG 465, O.R.F.C.
- △ PREVIOUSLY DEDICATED FOR PUBLIC UTILITY EASEMENT PURPOSES, PER AMENDING MAP OF TRACT NO. 5205, RECORDED IN VOLUME 76 OF PLATS, AT PAGES 46 THROUGH 70, FRESNO COUNTY RECORDS.
- △ PREVIOUSLY DEDICATED FOR PUBLIC UTILITY EASEMENT PURPOSES, PER AMENDING MAP OF TRACT NO. 5205, RECORDED IN VOLUME 76 OF PLATS, AT PAGES 46 THROUGH 70, FRESNO COUNTY RECORDS, VACATED BY FRESNO CITY COUNCIL RESOLUTION NO. 2009-138 RECORDED JULY 7, 2009 AS DOCUMENT NO. 2009-0091852, FRESNO COUNTY RECORDS AND RESERVED FOR PUBLIC UTILITY EASEMENT PURPOSES.
- △ PREVIOUSLY DEEDED FOR RECLAIMED WATER PIPELINE EASEMENT PURPOSES, RECORDED APRIL 22, 2008 AS DOCUMENT NO. 2008-0058598, O.R.F.C.
- △ PREVIOUSLY DEDICATED FOR PUBLIC STREET PURPOSES, PER AMENDING MAP OF TRACT NO. 5205, RECORDED IN VOLUME 76 OF PLATS, AT PAGES 46 THROUGH 70, FRESNO COUNTY RECORDS, VACATED BY FRESNO CITY COUNCIL RESOLUTION NO. 2009-138 RECORDED JULY 7, 2009 AS DOCUMENT NO. 2009-0091852, FRESNO COUNTY RECORDS AND RESERVED FOR PUBLIC UTILITY EASEMENT PURPOSES.
- ▲ EASEMENT NOW OFFERED FOR DEDICATION FOR PUBLIC STREET PURPOSES.
- ▲▲▲ INDICATES RELINQUISHMENT OF DIRECT ACCESS RIGHTS.
- CALC CALCULATED FROM RECORD DATA
- DCE FRESNO METROPOLITAN FLOOD CONTROL DISTRICT CHANNEL EASEMENT, RECORDED _____, 2017 AS DOC. NO. 2017-_____, F.C.R.
- F.C.R. FRESNO COUNTY RECORDS
- PE PEDESTRIAN EASEMENT NOW OFFERED FOR DEDICATION FOR PUBLIC USE.
- PUE PUBLIC UTILITY EASEMENT NOW OFFERED FOR DEDICATION FOR PUBLIC USE.
- (R) INDICATES RADIAL BEARING TO CURVE
- INDICATES THE LIMITS OF THIS SUBDIVISION

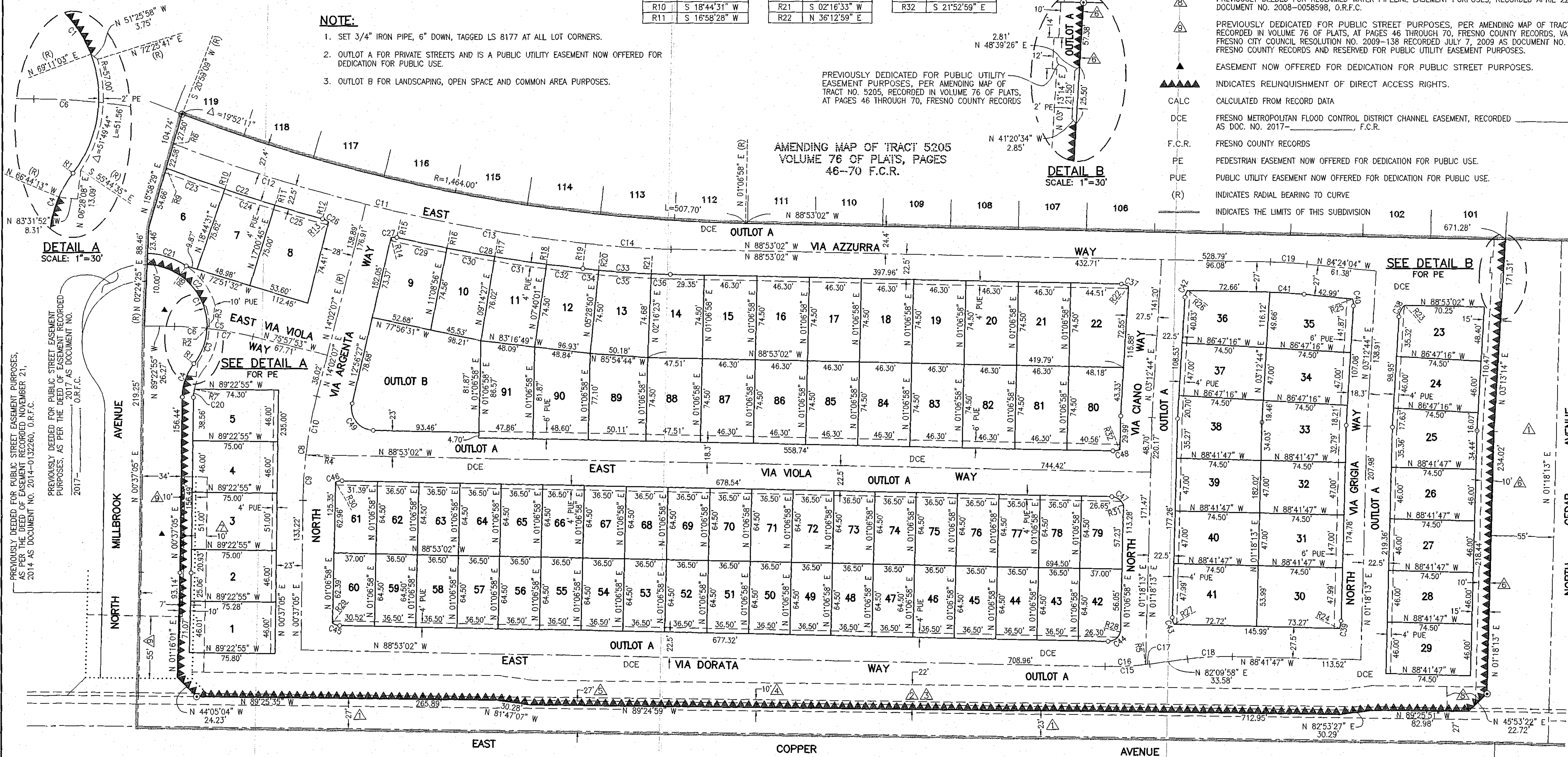
NOTE:

- SET 3/4" IRON PIPE, 6" DOWN, TAGGED LS 8177 AT ALL LOT CORNERS.
- OUTLOT A FOR PRIVATE STREETS AND IS A PUBLIC UTILITY EASEMENT NOW OFFERED FOR DEDICATION FOR PUBLIC USE.
- OUTLOT B FOR LANDSCAPING, OPEN SPACE AND COMMON AREA PURPOSES.

PREVIOUSLY DEDICATED FOR PUBLIC UTILITY EASEMENT PURPOSES, PER AMENDING MAP OF TRACT NO. 5205, RECORDED IN VOLUME 76 OF PLATS, AT PAGES 46 THROUGH 70, FRESNO COUNTY RECORDS

SCALE: 1" = 60'

SCALE: 1" = 30'



PREVIOUSLY DEEDED FOR PUBLIC STREET EASEMENT PURPOSES, AS PER THE DEED OF EASEMENT RECORDED NOVEMBER 21, 2014 AS DOCUMENT NO. 2014-0132260, O.R.F.C.

PREVIOUSLY DEEDED FOR PUBLIC STREET EASEMENT PURPOSES, AS PER THE DEED OF EASEMENT RECORDED NOVEMBER 21, 2017 AS DOCUMENT NO. 2017-_____, O.R.F.C.

SEE DETAIL B FOR PE