



Prepared on Tue Feb 07 23:18:09 2017

Street Names, Addresses and (Lot Numbers) for T6079



TRACT NO. 6079

A PLANNED DEVELOPMENT

BEING A SUBDIVISION OF THE REMAINDER OF TRACT 6033, RECORDED IN VOLUME 84 OF PLATS, AT PAGES 76 AND 77, FRESNO COUNTY RECORDS.

IN THE CITY OF FRESNO, COUNTY OF FRESNO, STATE OF CALIFORNIA SURVEYED AND PLATTED IN JANUARY 2016, BY GARY G. GIANNETTA

CONSISTING OF TWO SHEETS
SHEET TWO OF TWO SHEETS

BASIS OF BEARINGS

THE WEST LINE OF THE NORTHWEST QUARTER OF SECTION 27, TOWNSHIP 13 SOUTH, RANGE 21 EAST, MOUNT DIABLO BASE AND MERIDIAN, TAKEN AS BEARING NORTH 00°16'11" WEST AS PER TRACT NO. 5717 RECORDED IN VOLUME 80 OF PLATS, AT PAGES 56 AND 57, FRESNO COUNTY RECORDS.

NOTE:

1. SET 3/4" x 30" IRON PIPE, 6" DOWN, TAGGED RCE 26996 AT ALL LOT CORNERS AND ANGLE POINTS

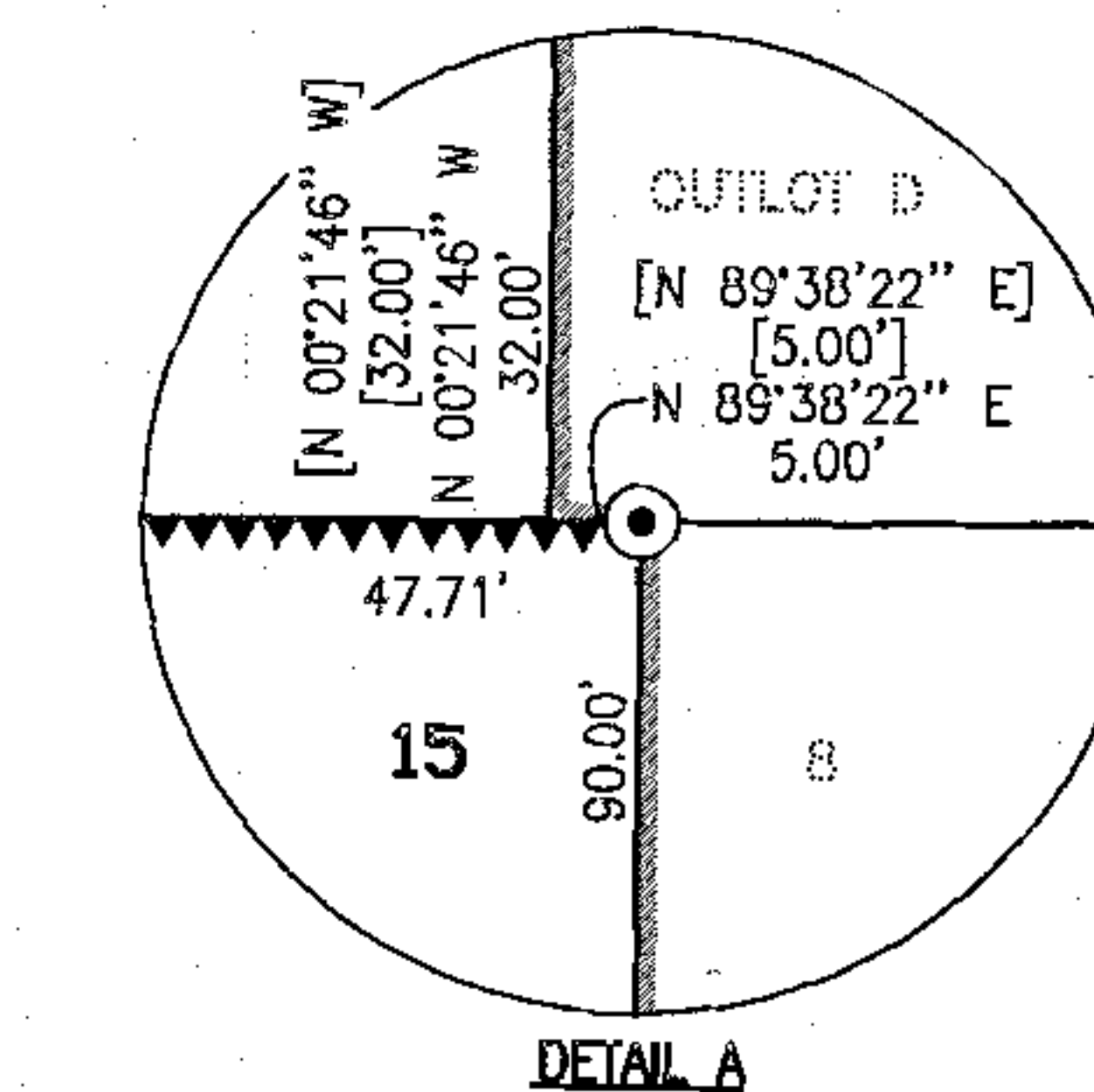
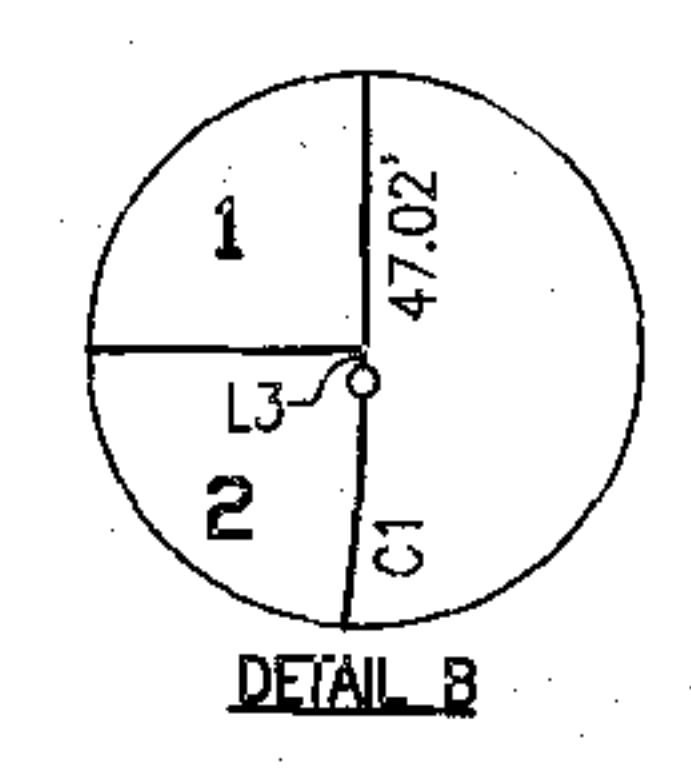
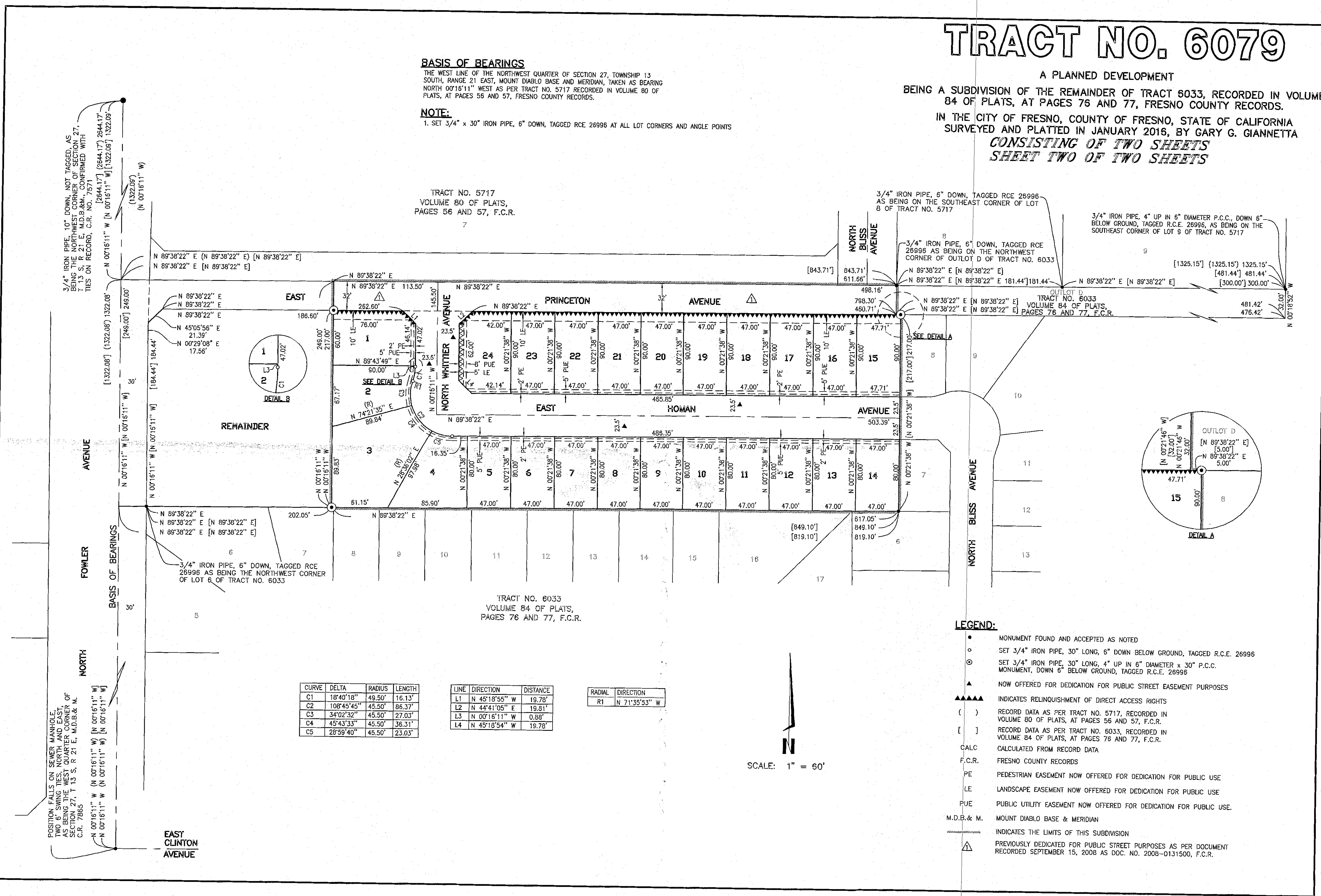
TRACT NO. 5717
VOLUME 80 OF PLATS,
PAGES 56 AND 57, F.C.R.

3/4" IRON PIPE, 6" DOWN, TAGGED RCE 26996 AS BEING ON THE SOUTHEAST CORNER OF LOT 8 OF TRACT NO. 5717

3/4" IRON PIPE, 4" UP IN 6" DIAMETER P.C.C., DOWN 6" BELOW GROUND, TAGGED R.C.E. 26995, AS BEING ON THE SOUTHEAST CORNER OF LOT 9 OF TRACT NO. 5717

3/4" IRON PIPE, 6" DOWN, TAGGED RCE 26996 AS BEING ON THE NORTHWEST CORNER OF OUTLOT D OF TRACT NO. 6033

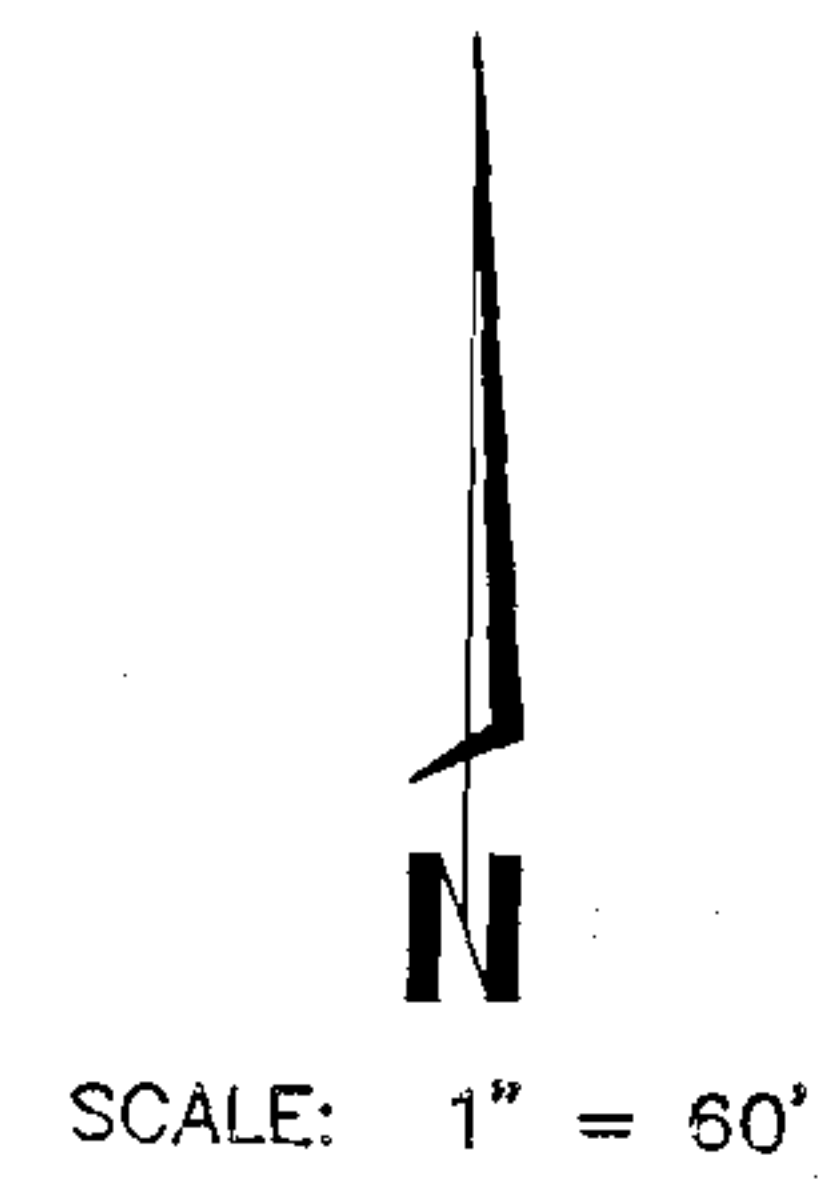
TRACT NO. 6033
VOLUME 84 OF PLATS,
PAGES 76 AND 77, F.C.R.



CURVE	DELTA	RADIUS	LENGTH
C1	18°40'18"	49.50'	16.13'
C2	108°45'45"	45.50'	86.37'
C3	34°02'32"	45.50'	27.03'
C4	45°43'33"	45.50'	36.31'
C5	28°59'40"	45.50'	23.03'

LINE	DIRECTION	DISTANCE
L1	N 45°18'55" W	19.78'
L2	N 44°41'05" E	19.81'
L3	N 00°16'11" W	0.88'
L4	N 45°18'54" W	19.78'

RADIAL	DIRECTION
R1	N 71°35'53" W



LEGEND:

- MONUMENT FOUND AND ACCEPTED AS NOTED
- SET 3/4" IRON PIPE, 30" LONG, 6" DOWN BELOW GROUND, TAGGED R.C.E. 26996
- ⊙ SET 3/4" IRON PIPE, 30" LONG, 4" UP IN 6" DIAMETER x 30" P.C.C. MONUMENT, DOWN 6" BELOW GROUND, TAGGED R.C.E. 26995
- ▲ NOW OFFERED FOR DEDICATION FOR PUBLIC STREET EASEMENT PURPOSES
- ▲▲▲▲ INDICATES RELINQUISHMENT OF DIRECT ACCESS RIGHTS
- () RECORD DATA AS PER TRACT NO. 5717, RECORDED IN VOLUME 80 OF PLATS, AT PAGES 56 AND 57, F.C.R.
- [] RECORD DATA AS PER TRACT NO. 6033, RECORDED IN VOLUME 84 OF PLATS, AT PAGES 76 AND 77, F.C.R.
- CALC CALCULATED FROM RECORD DATA
- F.C.R. FRESNO COUNTY RECORDS
- PE PEDESTRIAN EASEMENT NOW OFFERED FOR DEDICATION FOR PUBLIC USE
- LE LANDSCAPE EASEMENT NOW OFFERED FOR DEDICATION FOR PUBLIC USE
- PUE PUBLIC UTILITY EASEMENT NOW OFFERED FOR DEDICATION FOR PUBLIC USE.
- M.D.B. & M. MOUNT DIABLO BASE & MERIDIAN
- — — — — INDICATES THE LIMITS OF THIS SUBDIVISION
- ▲ PREVIOUSLY DEDICATED FOR PUBLIC STREET PURPOSES AS PER DOCUMENT RECORDED SEPTEMBER 15, 2008 AS DOC. NO. 2008-0131500, F.C.R.

3/4" IRON PIPE, 10" DOWN, NOT TAGGED, AS BEING THE NORTHWEST CORNER OF SECTION 27, T. 13 S., R. 21 E., M.D.B. & M., CONFIRMED WITH TIES ON RECORD, C.R. NO. 7571

POSITION FALLS ON SEWER MANHOLE, TWO 6" SWING, NORTH AND EAST, AS BEING THE WEST QUARTER CORNER OF SECTION 27, T. 13 S., R. 21 E., M.D.B. & M., C.R. 7865

EAST CLINTON AVENUE