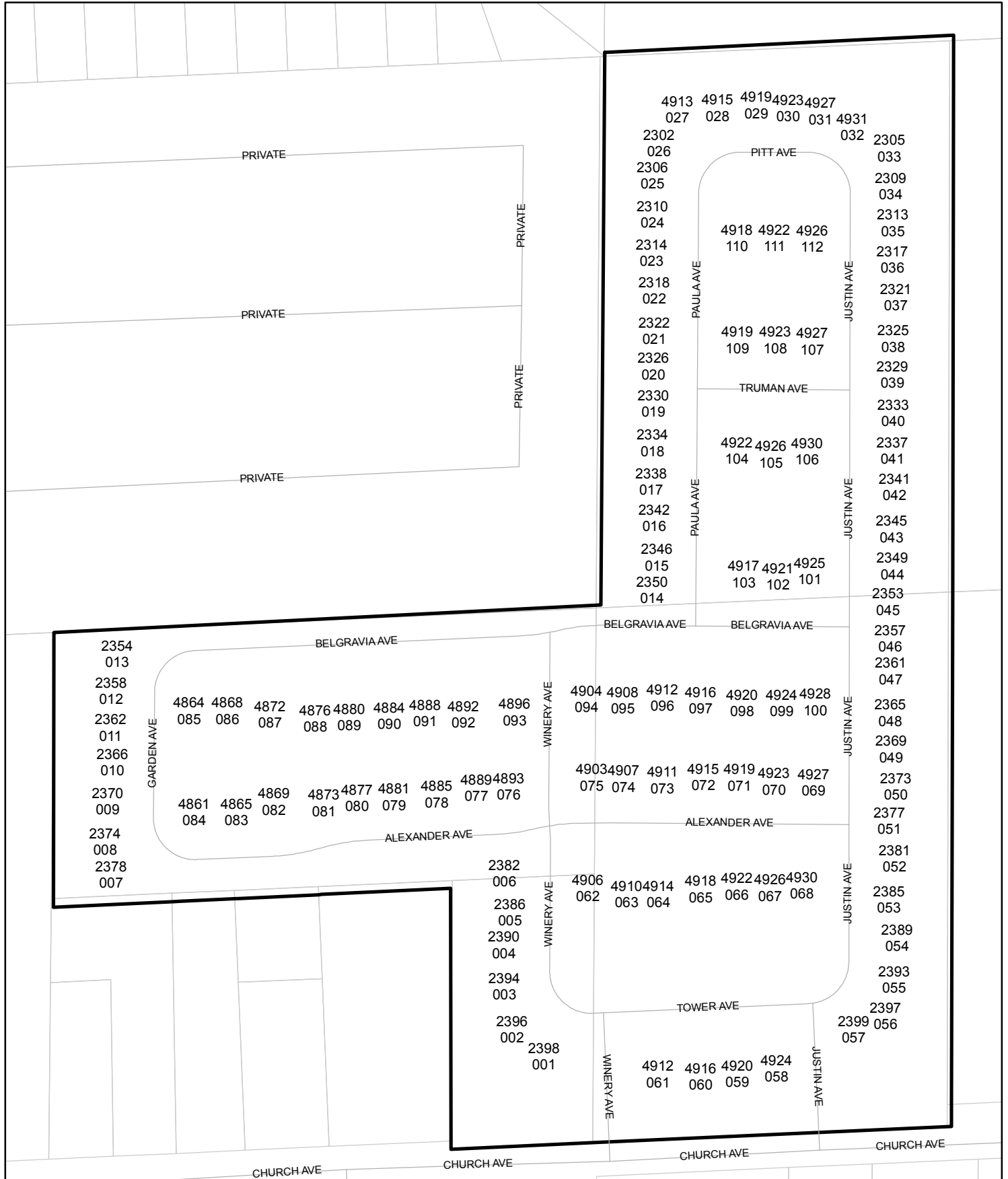




# Street Names, Addresses and (Lot Numbers) for T6073

Prepared on Mon Oct 22 13:37:05 2018



# FINAL MAP OF TRACT NO. 6073

A PLANNED DEVELOPMENT, BEING A MERGER AND RESUBDIVISION OF PORTIONS OF  
LOTS 19, 20, 29, AND 30 OF NEWHALL TRACT, BOOK 2 OF RECORD OF SURVEYS, AT PAGE 42,  
FRESNO COUNTY RECORDS, IN THE CITY OF FRESNO  
COUNTY OF FRESNO, STATE OF CALIFORNIA

SURVEYED AND PLATTED IN OCTOBER 2013  
BY PRECISION CIVIL ENGINEERING, INC.

CONSISTING OF FOUR SHEETS  
SHEET THREE OF FOUR

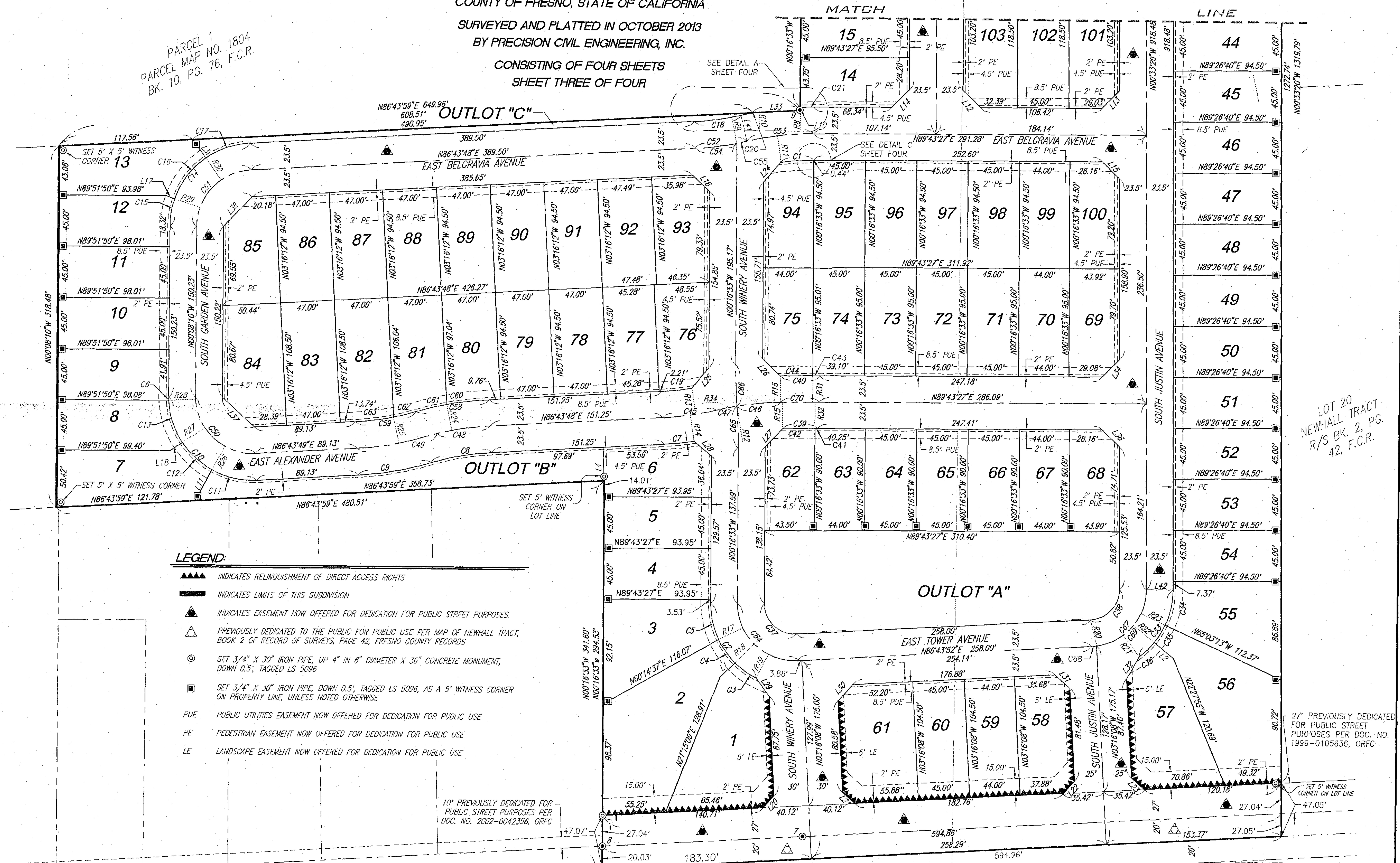
**NOTE:**

1. SET 3/4" X 30" IRON PIPE, TAGGED LS 5096, DN 6", AT ALL LOT CORNERS, ANGLE POINTS, AND ENDS OF CURVES, UNLESS NOTED OTHERWISE.
2. OUTLOTS "A", "B" AND "C" ARE DEDICATED IN FEE TO THE CITY OF FRESNO FOR OPEN SPACE, LANDSCAPING AND RECREATIONAL PURPOSES, SUBJECT TO CITY ACCEPTANCE OF DEVELOPER INSTALLED REQUIRED IMPROVEMENTS.

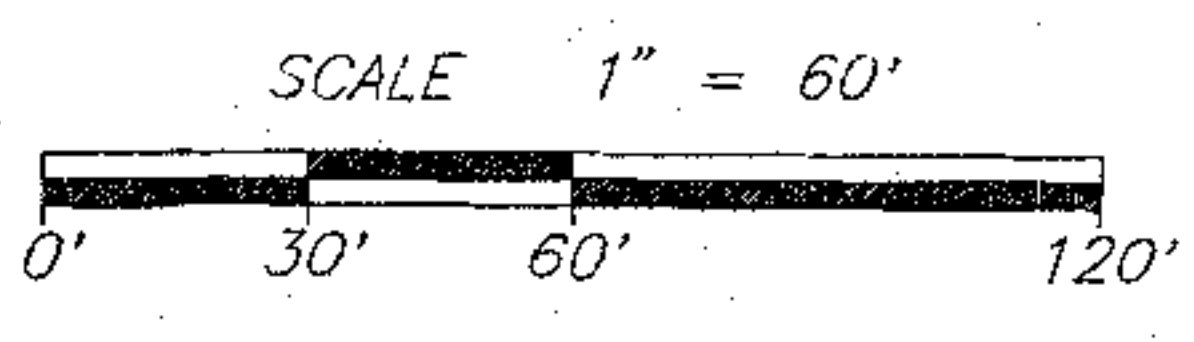
PARCEL 1  
PARCEL MAP NO. 1804  
BK. 10, PG. 76, F.C.R.

PARCEL 2  
PARCEL MAP NO. 1804  
BK. 10, PG. 76, F.C.R.

LOT 20  
NEWHALL TRACT  
R/S BK. 2, PG.  
42, F.C.R.



- LEGEND:**
- ▲▲▲ INDICATES RELINQUISHMENT OF DIRECT ACCESS RIGHTS
  - INDICATES LIMITS OF THIS SUBDIVISION
  - ▲ INDICATES EASEMENT NOW OFFERED FOR DEDICATION FOR PUBLIC STREET PURPOSES
  - △ PREVIOUSLY DEDICATED TO THE PUBLIC FOR PUBLIC USE PER MAP OF NEWHALL TRACT, BOOK 2 OF RECORD OF SURVEYS, PAGE 42, FRESNO COUNTY RECORDS
  - ⊙ SET 3/4" X 30" IRON PIPE, UP 4" IN 6" DIAMETER X 30" CONCRETE MONUMENT, DOWN 0.5", TAGGED LS 5096
  - SET 3/4" X 30" IRON PIPE, DOWN 0.5", TAGGED LS 5096, AS A 5' WITNESS CORNER ON PROPERTY LINE, UNLESS NOTED OTHERWISE
  - PUE PUBLIC UTILITIES EASEMENT NOW OFFERED FOR DEDICATION FOR PUBLIC USE
  - PE PEDESTRIAN EASEMENT NOW OFFERED FOR DEDICATION FOR PUBLIC USE
  - LE LANDSCAPE EASEMENT NOW OFFERED FOR DEDICATION FOR PUBLIC USE



PREPARED BY:  
**PRECISION CIVIL ENGINEERING, INC.**  
1234 O STREET  
FRESNO, CA 93721  
PH(559)449-4500 FAX(559)449-4515

S. LINE OF THE NW 1/4 OF SECTION 18, T.14S., R.21E., M.D.B.&M. N86°43'52"E 2666.39'  
EAST CHURCH AVENUE

# FINAL MAP OF TRACT NO. 6073

A PLANNED DEVELOPMENT, BEING A MERGER AND RESUBDIVISION OF PORTIONS OF LOTS 19, 20, 29, AND 30 OF NEWHALL TRACT, BOOK 2 OF RECORD OF SURVEYS, AT PAGE 42,

FRESNO COUNTY RECORDS, IN THE CITY OF FRESNO COUNTY OF FRESNO, STATE OF CALIFORNIA

SURVEYED AND PLATTED IN OCTOBER 2013 BY PRECISION CIVIL ENGINEERING, INC.

CONSISTING OF FOUR SHEETS SHEET FOUR OF FOUR

- LEGEND:**
- INDICATES LIMITS OF SUBDIVISION
  - MONUMENTS FOUND AND ACCEPTED AS NOTED (SEE SHEET TWO)
  - SET 3/4" x 30" IRON PIPE, UP 4" IN 6" DIA x 30" CONCRETE MONUMENT, DOWN 0.5', TAGGED LS 5096
  - SET 3/4" x 30" IRON PIPE, DOWN 0.5', TAGGED LS 5096, AS A 5' WITNESS CORNER ON PROPERTY LINE, UNLESS NOTED OTHERWISE
  - PUE PUBLIC UTILITIES EASEMENT NOW OFFERED FOR DEDICATION FOR PUBLIC USE
  - PE PEDESTRIAN EASEMENT NOW OFFERED FOR DEDICATION FOR PUBLIC USE
  - LE LANDSCAPE EASEMENT NOW OFFERED FOR DEDICATION FOR PUBLIC USE

