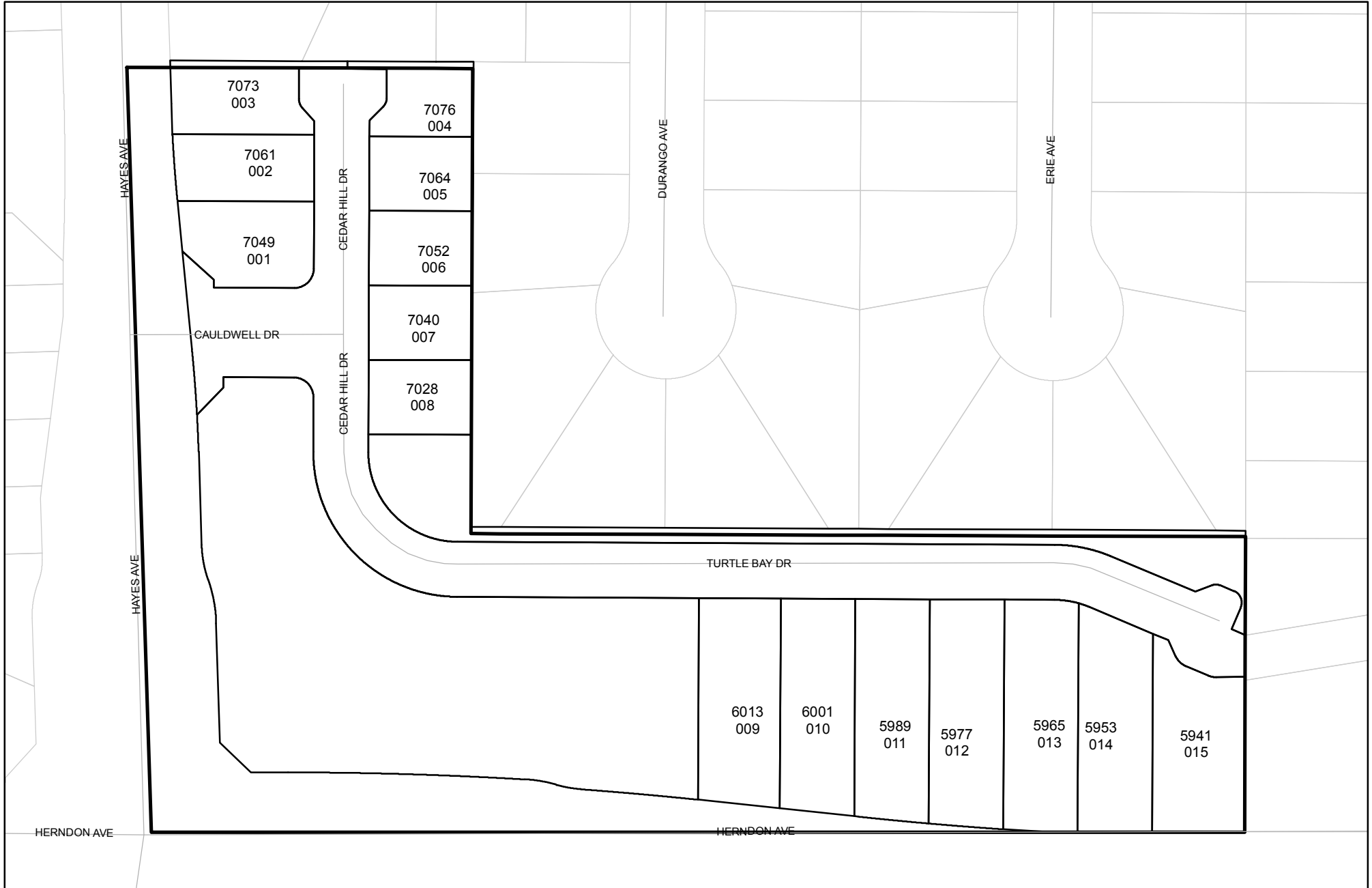


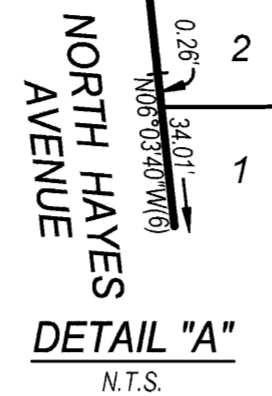


Prepared on Mon Oct 22 13:38:40 2018

Street Names, Addresses and (Lot Numbers) for T6053



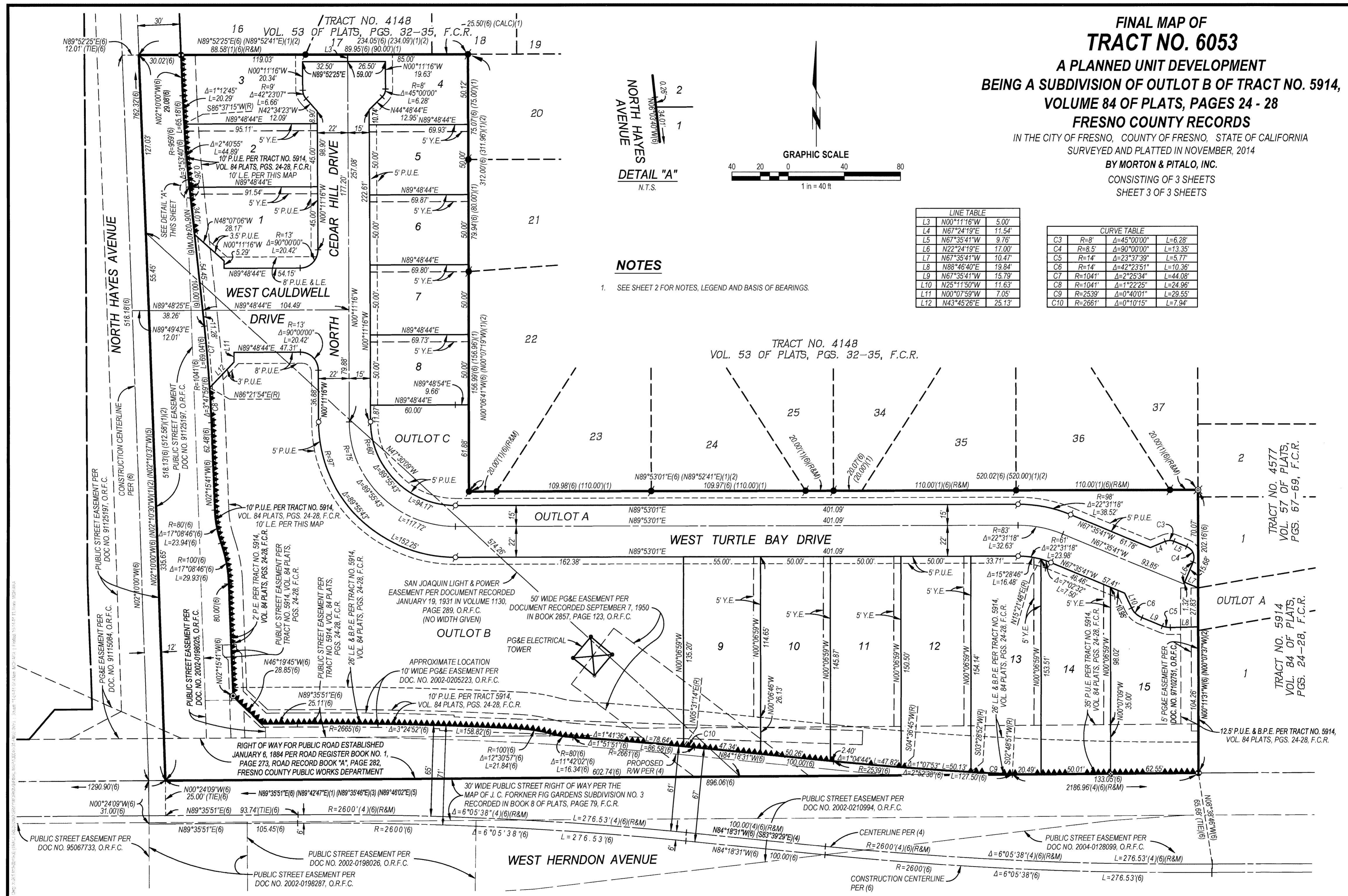
**FINAL MAP OF
TRACT NO. 6053**
A PLANNED UNIT DEVELOPMENT
BEING A SUBDIVISION OF OUTLOT B OF TRACT NO. 5914,
VOLUME 84 OF PLATS, PAGES 24 - 28
FRESNO COUNTY RECORDS
IN THE CITY OF FRESNO, COUNTY OF FRESNO, STATE OF CALIFORNIA
SURVEYED AND PLATTED IN NOVEMBER, 2014
BY **MORTON & PITALO, INC.**
CONSISTING OF 3 SHEETS
SHEET 3 OF 3 SHEETS



LINE TABLE	
L3	N00°11'16"W 5.00'
L4	N67°35'41"W 11.54'
L5	N67°35'41"W 9.76'
L6	N22°24'19"E 17.00'
L7	N67°35'41"W 10.47'
L8	N88°46'40"E 19.84'
L9	N67°35'41"W 15.79'
L10	N25°11'50"W 11.63'
L11	N00°07'59"W 7.05'
L12	N43°45'26"E 25.13'

CURVE TABLE			
C3	R=8'	Δ=45°00'00"	L=6.28'
C4	R=8.5'	Δ=90°00'00"	L=13.35'
C5	R=14'	Δ=23°37'39"	L=5.77'
C6	R=14'	Δ=42°23'51"	L=10.36'
C7	R=1041'	Δ=2°25'34"	L=44.08'
C8	R=1041'	Δ=1°22'25"	L=24.96'
C9	R=2539'	Δ=0°40'01"	L=29.55'
C10	R=2661'	Δ=0°10'15"	L=7.94'

NOTES
1. SEE SHEET 2 FOR NOTES, LEGEND AND BASIS OF BEARINGS.



N89°52'25"E(6)
12.01'(TIE)(6)
N02°10'00"W(6)
28.08(6)
N02°10'00"W(6)
762.32(6)
N02°10'00"W(6)
518.13(6)
N02°10'00"W(6)
335.65
N02°10'00"W(6)
80.00(6)
N02°10'00"W(6)
25.11(6)
N02°10'00"W(6)
31.00(6)
N02°10'00"W(6)
25.00'(TIE)(6)
N89°35'51"E(6)
105.45(6)
N89°35'51"E(6)
93.74(TIE)(6)
R=2600'(4)(6)(R&M)
N00°24'09"W(6)
25.00'(TIE)(6)
N89°35'51"E(6)
N89°42'47"E(1)(N89°35'46"E(3)(N89°46'02"E(5))
R=2600'(4)(6)(R&M)
Δ=6°05'38"(4)(6)(R&M)
L=276.53'(6)
N89°35'51"E(6)
N89°42'47"E(1)(N89°35'46"E(3)(N89°46'02"E(5))
R=2600'(4)(6)(R&M)
Δ=6°05'38"(4)(6)(R&M)
L=276.53'(6)
N89°35'51"E(6)
N89°42'47"E(1)(N89°35'46"E(3)(N89°46'02"E(5))
R=2600'(4)(6)(R&M)
Δ=6°05'38"(4)(6)(R&M)
L=276.53'(6)

TRACT NO. 4577
VOL. 57 OF PLATS,
PGS. 67-69, F.C.R.
TRACT NO. 5914
VOL. 84 OF PLATS,
PGS. 24-28, F.C.R.

DATE: 11/10/14