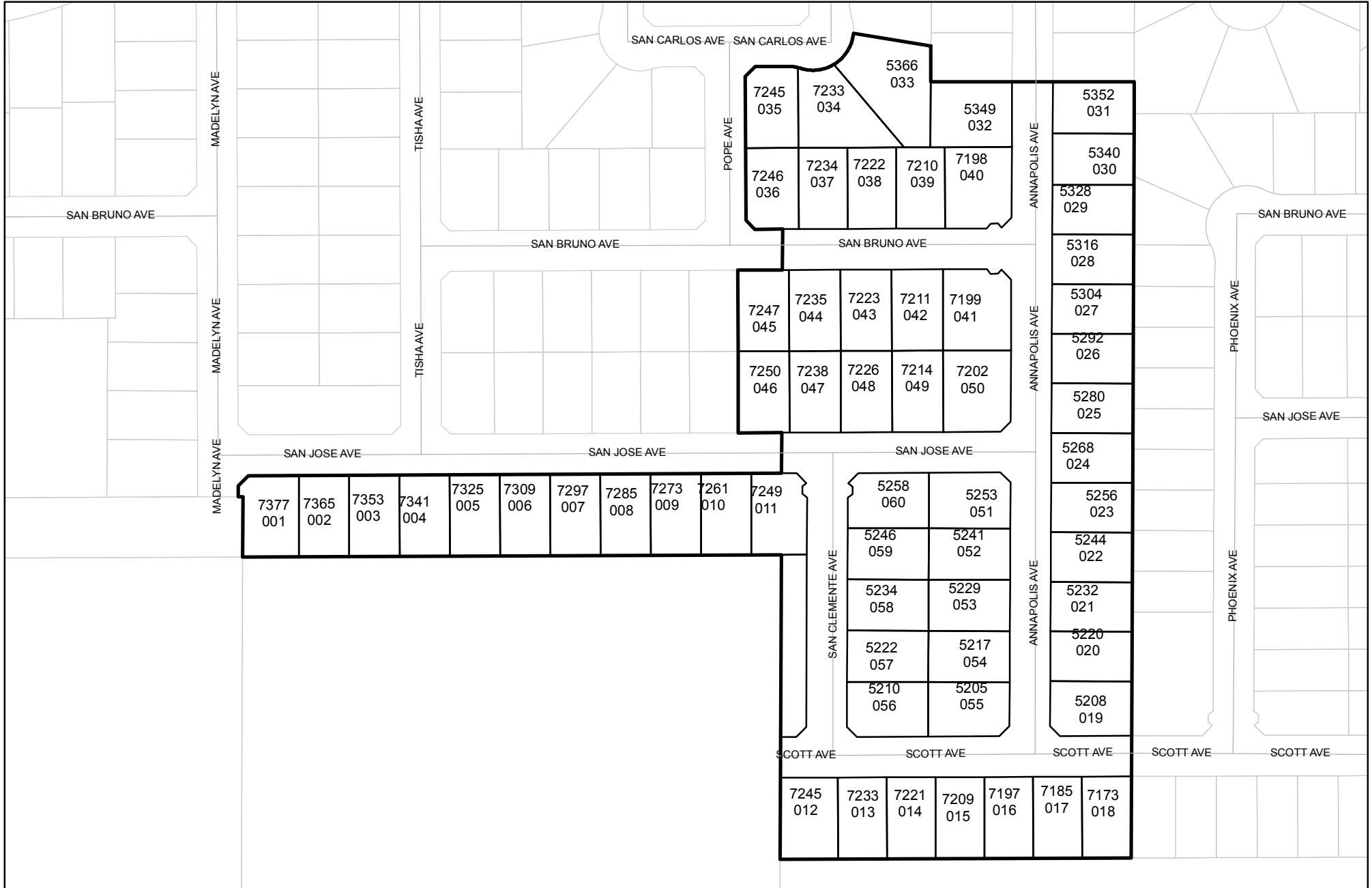




Prepared on Tue Jul 19 22:06:45 2016

Street Names, Addresses and (Lot Numbers) for T6051



FINAL MAP OF TRACT NO. 6051

PHASE 3 OF VESTING TENTATIVE MAP NO. 5600
 BEING A MERGER AND RESUBDIVISION OF PORTIONS OF LOTS 24 & 25 OF THE PLAT OF MUSCATEL ESTATE, RECORDED IN VOLUME 4 OF PLATS AT PAGE 67, F.C.R. AND OUTLOT D OF TRACT NO. 5600 RECORDED IN VOLUME 80 OF PLATS AT PAGES 68 - 73, F.C.R. AND OUTLOTS B, C & D OF TRACT NO. 5869 RECORDED IN VOLUME 81 OF PLATS AT PAGES 90 - 96, F.C.R.
 IN THE CITY OF FRESNO, FRESNO COUNTY, CALIFORNIA
 SURVEYED AND PLATTED IN JUNE 2013 BY YAMABE & HORN ENGINEERING, INC.
 CONSISTING OF THREE SHEETS, SHEET 3 OF 3

LEGEND

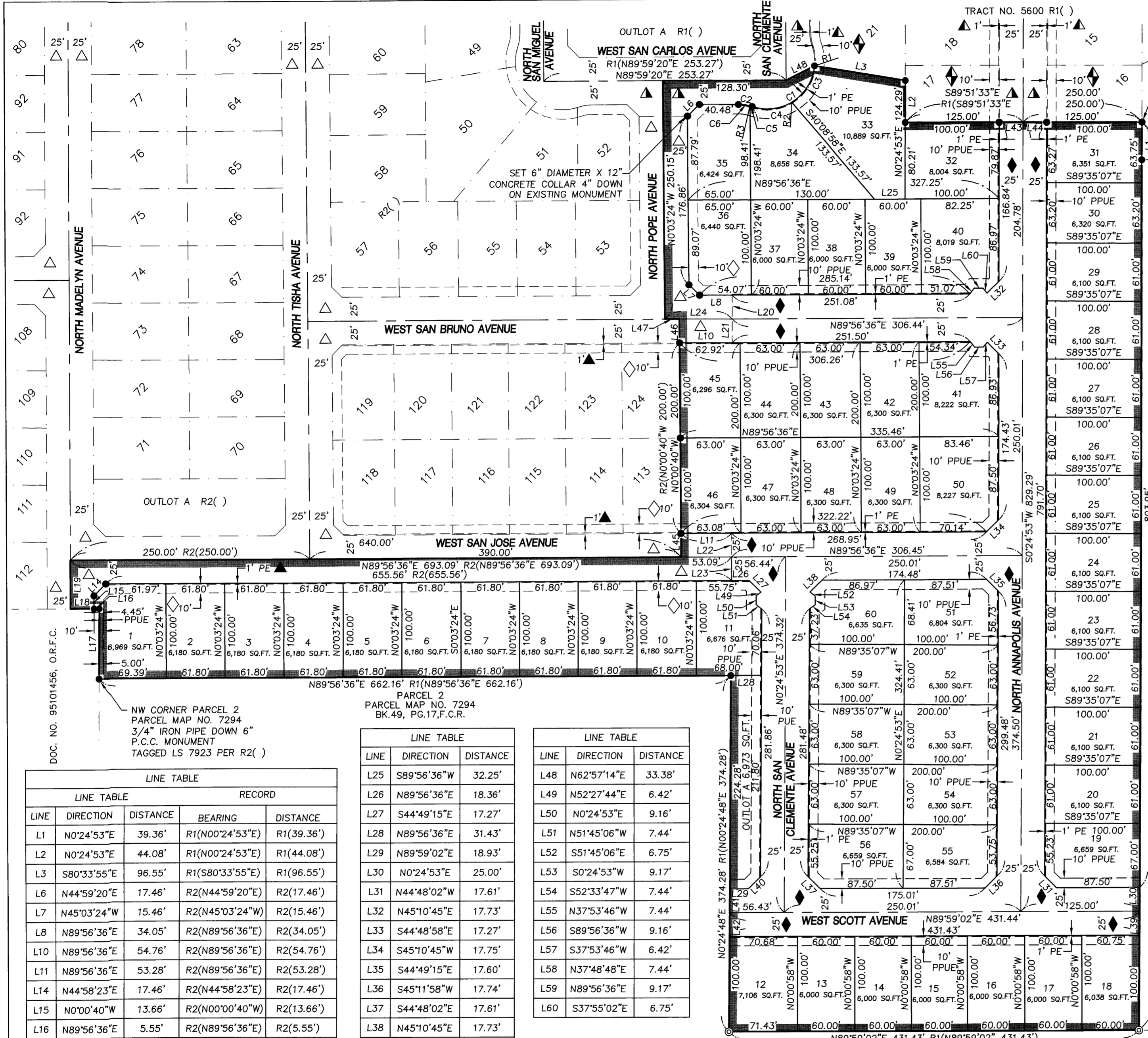
- MONUMENT FOUND & ACCEPTED 3/4" IRON PIPE DOWN 6" TAGGED LS 7923 UNLESS OTHERWISE NOTED
- ⊙ SET 3/4" X 30" IRON PIPE UP 4" IN 6" DIAMETER X 30" P.C.C. MONUMENT, DOWN 6" TAGGED LS 7923
- R1 () RECORD DATA PER FINAL MAP OF TRACT NO. 5600 RECORDED IN VOL. 80 OF PLATS AT PGS. 68-73, F.C.R.
- R2 () RECORD DATA PER FINAL MAP OF TRACT NO. 5869 RECORDED IN VOL. 81 OF PLATS AT PGS. 90-96, F.C.R.
- R3 () RECORD DATA PER RECORD OF SURVEY RECORDED IN BK. 10 OF RECORD OF SURVEYS AT PG. 33, F.C.R.
- ▲ EASEMENT PREVIOUSLY DEDICATED FOR PUBLIC STREET PURPOSES BY THE FINAL MAP OF TRACT NO. 5600 R1 ()
- △ EASEMENT PREVIOUSLY DEDICATED FOR PUBLIC STREET PURPOSES BY THE FINAL MAP OF TRACT NO. 5869 R2 ()
- ▲ PREVIOUSLY DEDICATED FOR PEDESTRIAN EASEMENT PURPOSES BY THE FINAL MAP OF TRACT NO. 5600 R1 ()
- ▲ PREVIOUSLY DEDICATED FOR PEDESTRIAN EASEMENT PURPOSES BY THE FINAL MAP OF TRACT NO. 5869 R2 ()
- ◆ PREVIOUSLY DEDICATED FOR PLANTING & PUBLIC UTILITY EASEMENT PURPOSES BY THE FINAL MAP OF TRACT NO. 5600 R1 ()
- ◆ PREVIOUSLY DEDICATED FOR PLANTING & PUBLIC UTILITY EASEMENT PURPOSES BY THE FINAL MAP OF TRACT NO. 5869 R2 ()
- CR CORNER RECORD ON FILE WITH THE FRESNO COUNTY SURVEYOR
- O.R.F.C. OFFICIAL RECORDS FRESNO COUNTY
- F.C.R. FRESNO COUNTY RECORDS
- CFR CALCULATED FROM RECORD DATA
- FCBCM FRESNO COUNTY BRASS CAP MONUMENT
- SECTION LINE
- EXISTING PROPERTY LINE
- EASEMENT LINE
- BLUE BORDER INDICATES LIMITS OF SUBDIVISION
- ... INDICATES EXTENSION OF LINE TO DIMENSION POINT AS SHOWN

THE REAL PROPERTY DESCRIBED BELOW IS DEDICATED AS AN EASEMENT FOR PUBLIC PURPOSES

- ◆ NOW OFFERED FOR DEDICATION FOR PUBLIC STREET EASEMENT PURPOSES
- PPUE PLANTING & PUBLIC UTILITY EASEMENT NOW OFFERED FOR DEDICATION FOR PUBLIC USE
- PE PEDESTRIAN EASEMENT NOW OFFERED FOR DEDICATION FOR PUBLIC USE
- OUTLOT A LANDSCAPE EASEMENT NOW OFFERED FOR DEDICATION FOR PUBLIC USE

NOTE

- OUTLOT A IS FOR AGGREGATE OPEN SPACE, LANDSCAPING AND RECREATIONAL PURPOSES.
- SET 3/4" X 30" IRON PIPE DOWN 6" TAGGED LS 7923 OR BRASS TAG STAMPED LS 7923 FLUSH WITH CONCRETE SURFACE AT ALL LOT CORNERS, ANGLE POINT OR POINTS OF CURVATURE UNLESS OTHERWISE NOTED.
- BASIS OF BEARINGS SEE SHEET 2.



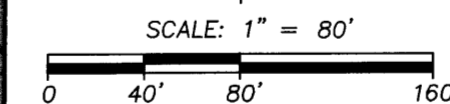
LINE	DIRECTION	DISTANCE
L25	S89°56'36"W	32.25'
L26	N89°56'36"E	18.36'
L27	S44°49'15"E	17.27'
L28	N89°56'36"E	31.43'
L29	N89°59'02"E	18.93'
L30	N0°24'53"E	25.00'
L31	N44°48'02"W	17.61'
L32	N45°10'45"E	17.73'
L33	S44°48'58"W	17.27'
L34	S45°10'45"W	17.75'
L35	S44°49'15"E	17.60'
L36	S45°11'58"W	17.74'
L37	S44°48'02"E	17.61'
L38	N45°10'45"E	17.73'
L39	N0°24'53"E	25.00'
L40	N45°11'49"E	17.74'
L41	N0°24'48"E	25.00'
L42	N0°24'48"E	25.00'
L43	S89°51'33"E	25.00'
L44	S89°51'33"E	25.00'
L45	N00°00'40"W	25.00'
L46	N00°00'40"W	25.00'
L47	N89°56'36"E	14.83'

LINE	DIRECTION	DISTANCE
L48	N62°57'14"E	33.38'
L49	N52°27'44"E	6.42'
L50	N0°24'53"E	9.16'
L51	N51°45'06"W	7.44'
L52	S51°45'06"E	6.75'
L53	S0°24'53"W	9.17'
L54	S52°33'47"W	7.44'
L55	N37°53'46"W	7.44'
L56	S89°56'36"W	9.16'
L57	S37°53'46"W	6.42'
L58	N37°48'48"E	7.44'
L59	N89°56'36"E	9.17'
L60	S37°55'02"E	6.75'

RADIAL TABLE			
MEASURED	RECORD	MEASURED	RECORD
RADIAL	BEARING	RADIAL	BEARING
R1	N84°28'19"W	R1	N84°28'18"W
R2	S30°59'04"E		
R3	N15°40'40"E		

CURVE TABLE						
MEASURED			RECORD			
CURVE	RADIUS	DELTA	LENGTH	RADIUS	DELTA	LENGTH
C1	50.00'	103°07'57"	90.00'	R1(50.00')	R1(103°07'56")	R1(90.00')
C2	45.00'	18°40'18"	14.66'	R1(45.00')	R1(18°40'18")	R1(14.66')
C3	50.00'	53°29'15"	46.68'			
C4	50.00'	49°38'42"	43.32'			
C5	45.00'	2°58'58"	2.34'			
C6	45.00'	15°41'20"	12.32'			

LINE TABLE				
LINE	DIRECTION	DISTANCE	BEARING	DISTANCE
L1	N0°24'53"E	39.36'	R1(N00°24'53"E)	R1(39.36')
L2	N0°24'53"E	44.08'	R1(N00°24'53"E)	R1(44.08')
L3	S80°33'55"E	96.55'	R1(S80°33'55"E)	R1(96.55')
L6	N44°59'20"E	17.46'	R2(N44°59'20"E)	R2(17.46')
L7	N45°03'24"W	15.46'	R2(N45°03'24"W)	R2(15.46')
L8	N89°56'36"E	34.05'	R2(N89°56'36"E)	R2(34.05')
L10	N89°56'36"E	54.76'	R2(N89°56'36"E)	R2(54.76')
L11	N89°56'36"E	53.28'	R2(N89°56'36"E)	R2(53.28')
L14	N44°58'23"E	17.46'	R2(N44°58'23"E)	R2(17.46')
L15	N0°00'40"W	13.66'	R2(N00°00'40"W)	R2(13.66')
L16	N89°56'36"E	5.55'	R2(N89°56'36"E)	R2(5.55')
L17	S0°24'44"W	74.00'	R1(N00°24'44"E)	R2(74.00')
L18	S89°56'36"W	25.00'	R2(N89°56'36"E)	R2(25.00'CFR)
L19	N0°00'40"W	51.00'	R2(N00°00'40"W)	R2(51.00')
L20	N0°24'48"E	25.00'	R2(N00°24'48"E)	R2(25.00'CFR)
L21	S0°24'48"W	25.00'	R2(N00°24'48"E)	R2(25.00')
L22	N0°24'48"E	25.00'	R2(N00°24'48"E)	R2(25.00')
L23	N0°24'48"E	25.00'	R2(N00°24'48"E)	R2(25.00')
L24	N89°56'36"E	69.78'	R2(N89°56'36"E)	R2(69.78')



DOC. NO. 95101456, O.R.F.C.

DOC. NO. 1999-0061436, O.R.F.C.

DOC. NO. 1999-0061433, O.R.F.C.



2985 N. BURL AVE.
 SUITE 101
 FRESNO, CA 93727
 TEL (559) 244-3123
 FAX (559) 244-3120