



Prepared on Mon Oct 22 13:39:41 2018

Street Names, Addresses and (Lot Numbers) for T6045



TRACT NO. 6045

PHASE I OF VESTING TENTATIVE MAP NO. 6045
 BEING A SUBDIVISION OF A PORTION OF OUTLOT G OF THE
 AMENDING MAP OF TRACT NO. 5205, RECORDED IN VOLUME 76 OF
 PLATS, PAGES 46 THROUGH 70, FRESNO COUNTY RECORDS
 IN THE CITY OF FRESNO, COUNTY OF FRESNO, STATE OF CALIFORNIA
 SURVEYED AND PLATTED IN JANUARY 2014, BY GARY G. GIANNETTA
CONSISTING OF THREE SHEETS
SHEET THREE OF THREE SHEETS

LEGEND:

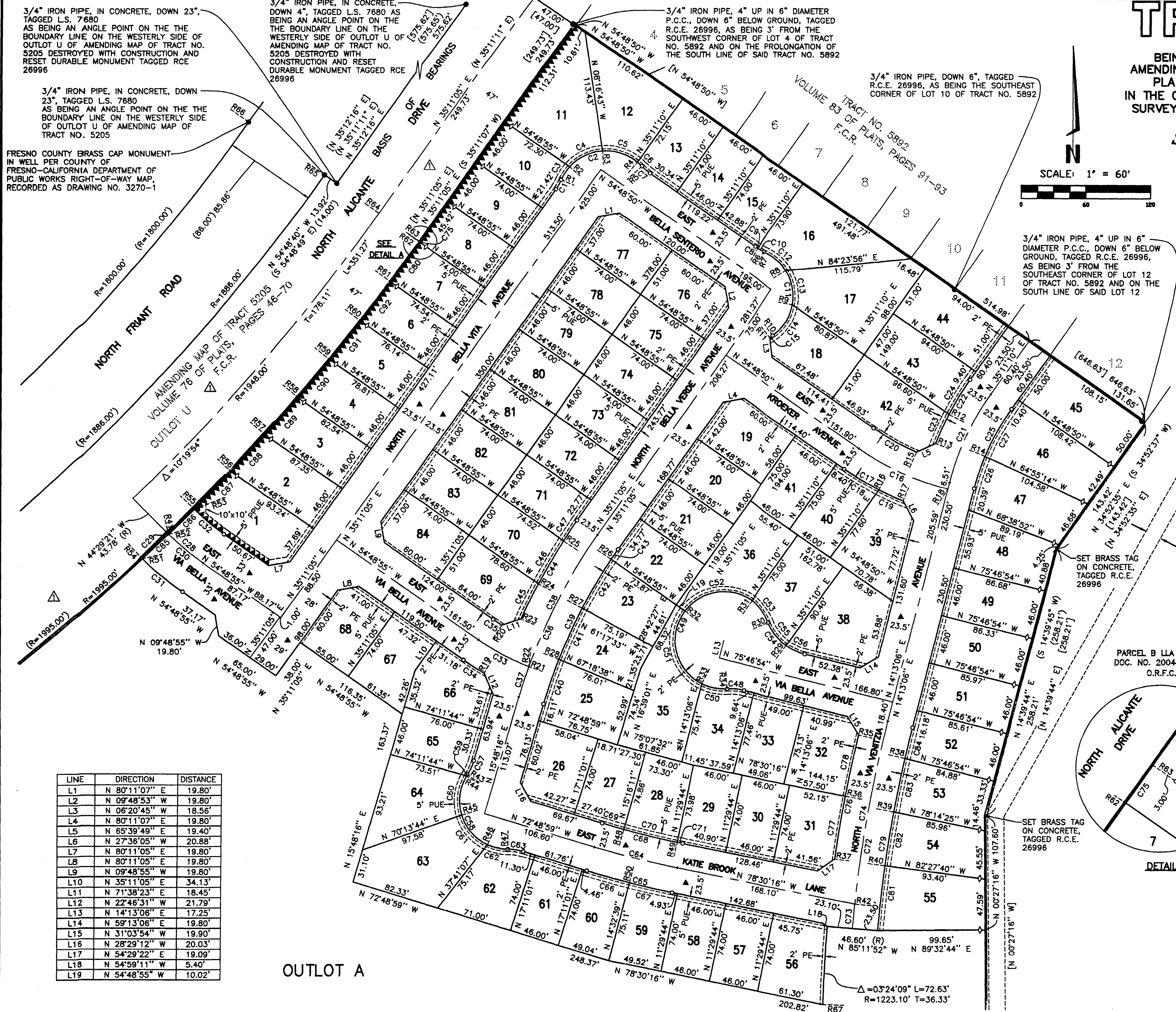
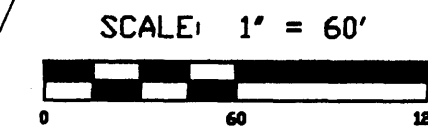
- MONUMENT FOUND AND ACCEPTED AS NOTED
- ⊙ SET 3/4" IRON PIPE, 30" LONG, 4" UP IN 6" DIAMETER x 30" P.C.C. MONUMENT, DOWN 6" BELOW GROUND, TAGGED R.C.E. 26996, LOCATION AS SHOWN
- SET 3/4" IRON PIPE, 30" LONG, 6" DOWN BELOW GROUND, TAGGED R.C.E. 26996
- ◇ SET 3/4" IRON PIPE, 30" LONG, 6" BELOW GROUND, TAGGED R.C.E. 26996, 3.00' FROM LOT CORNER ON SIDE YARD LOT LINE AS SHOWN (DISTANCES SHOWN ARE TO TRUE LOT CORNER)
- ▲▲▲▲ INDICATES RELINQUISHMENT OF DIRECT ACCESS RIGHTS
- ▲ EASEMENT NOW OFFERED FOR DEDICATION FOR PUBLIC STREET PURPOSES FOR PUBLIC USE
- () RECORD DATA AS PER AMENDING MAP OF TRACT NO. 5205, RECORDED IN VOLUME 76 OF PLATS, AT PAGES 46 THROUGH 70, FRESNO COUNTY RECORDS
- [] RECORD DATA AS PER THE FINAL MAP OF TRACT NO. 5892, RECORDED IN VOLUME 83 OF PLATS, AT PAGES 91 THROUGH 93, FRESNO COUNTY RECORDS
- △ PREVIOUSLY DEDICATED FOR PUBLIC STREET EASEMENT PURPOSES, PER DOCUMENT NO. 2013-0159302, RECORDED NOVEMBER 20, 2013, F.C.R.
- CALC CALCULATED FROM RECORD DATA
- F.C.R. FRESNO COUNTY RECORDS
- PPUE PLANTING AND PUBLIC UTILITY EASEMENT NOW OFFERED FOR DEDICATION FOR PUBLIC USE
- PUE PUBLIC UTILITY EASEMENT NOW OFFERED FOR DEDICATION FOR PUBLIC USE
- PE PEDESTRIAN EASEMENT NOW OFFERED FOR DEDICATION FOR PUBLIC USE
- (R) DENOTES RADIAL BEARING
- O.R.F.C. OFFICIAL RECORDS FRESNO COUNTY
- BLUE BORDER INDICATES THE LIMITS OF THIS SUBDIVISION

NOTE:

1. SET 3/4" IRON PIPE, 6" DOWN, TAGGED R.C.E. 26996 AT ALL LOT CORNERS AND ANGLE POINTS OR AS SHOWN
2. SEE SH. 2 FOR CURVE TABLE
3. OUTLOT A IS FOR FUTURE DEVELOPMENT

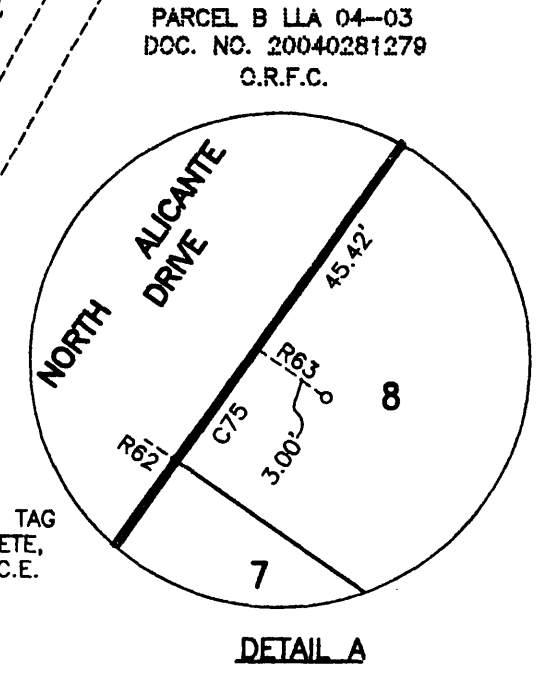
BASIS OF BEARINGS

THE BOUNDARY LINE ON THE WESTERLY SIDE OF OUTLOT U OF AMENDING MAP OF TRACT NO. 5205, RECORDED IN VOLUME 76 OF PLATS, PAGES 46 THROUGH 70, FRESNO COUNTY RECORDS, TAKEN AS BEARING N 35°12'16" E AS SHOWN ON TRACT NO. 5892, RECORDED IN VOLUME 83 OF PLATS, PAGES 91 THROUGH 93, FRESNO COUNTY RECORDS



LINE	DIRECTION	DISTANCE
L1	N 80°11'07" E	19.80'
L2	N 09°48'53" W	19.80'
L3	N 06°20'45" W	18.56'
L4	N 80°11'07" E	19.80'
L5	N 65°39'49" E	19.40'
L6	N 27°36'05" W	20.88'
L7	N 80°11'05" E	19.80'
L8	N 80°11'05" E	19.80'
L9	N 09°48'55" W	19.80'
L10	N 35°11'05" E	34.13'
L11	N 71°38'23" E	18.45'
L12	N 22°46'31" W	21.79'
L13	N 14°13'06" E	17.25'
L14	N 59°13'06" E	19.80'
L15	N 31°03'54" W	19.90'
L16	N 28°29'12" W	20.03'
L17	N 54°29'22" E	19.09'
L18	N 54°59'11" W	5.40'
L19	N 54°48'55" W	10.02'

OUTLOT A



RADIAL	DIRECTION
R1	N 66°35'34" W
R2	N 48°15'38" W
R3	N 04°11'13" W
R4	N 39°53'12" E
R5	N 46°57'49" E
R6	S 31°34'23" W
R7	N 23°24'31" E
R8	N 58°15'14" E
R9	S 80°11'27" E
R10	S 36°08'37" E
R11	N 39°49'17" W
R12	N 62°42'58" W
R13	N 69°02'43" W
R14	N 67°40'53" W
R15	S 23°33'54" W
R16	S 27°17'02" W
R17	S 22°04'58" W
R18	S 14°13'06" W
R19	S 29°55'54" W
R20	S 32°24'14" W
R21	N 70°48'02" W
R22	S 21°31'55" W
R23	N 66°24'10" W
R24	N 62°24'53" W
R25	N 57°21'31" W
R26	N 56°09'58" W
R27	N 62°32'19" W
R28	N 68°52'48" W
R29	S 36°19'03" W
R30	N 68°16'55" E
R31	N 35°03'21" E
R32	N 52°55'34" W
R33	S 26°30'26" W
R34	S 03°59'06" E

RADIAL	DIRECTION
R35	N 76°40'34" W
R36	N 79°24'48" W
R37	N 82°13'38" W
R38	N 77°14'02" W
R39	N 79°43'16" W
R40	N 82°13'37" W
R41	S 44°29'23" E
R42	N 84°05'43" W
R43	N 57°30'35" W
R44	N 59°24'48" W
R45	S 72°44'07" W
R46	S 24°53'02" W
R47	S 00°29'53" W
R48	S 15°37'39" W
R49	S 11°52'18" W
R50	S 14°19'15" W
R51	S 44°54'48" W
R52	S 44°46'20" W
R53	S 44°43'55" W
R54	S 43°32'30" E
R55	S 45°26'15" E
R56	S 46°51'07" E
R57	S 48°11'02" E
R58	S 49°30'44" E
R59	S 50°50'16" E
R60	S 52°09'40" E
R61	S 53°28'59" E
R62	S 54°48'15" E
R63	S 54°49'15" E
R64	S 54°49'15" E
R65	S 54°49'06" E
R66	S 54°48'40" E
R67	N 88°36'01" W

PARCEL B LLA 04-03
 DOC. NO. 20040281279
 O.R.F.C.

SET BRASS TAG ON CONCRETE, TAGGED R.C.E. 26996

SET BRASS TAG ON CONCRETE, TAGGED R.C.E. 26996

Δ=03°24'09" L=72.63'
 R=1223.10' T=36.33'