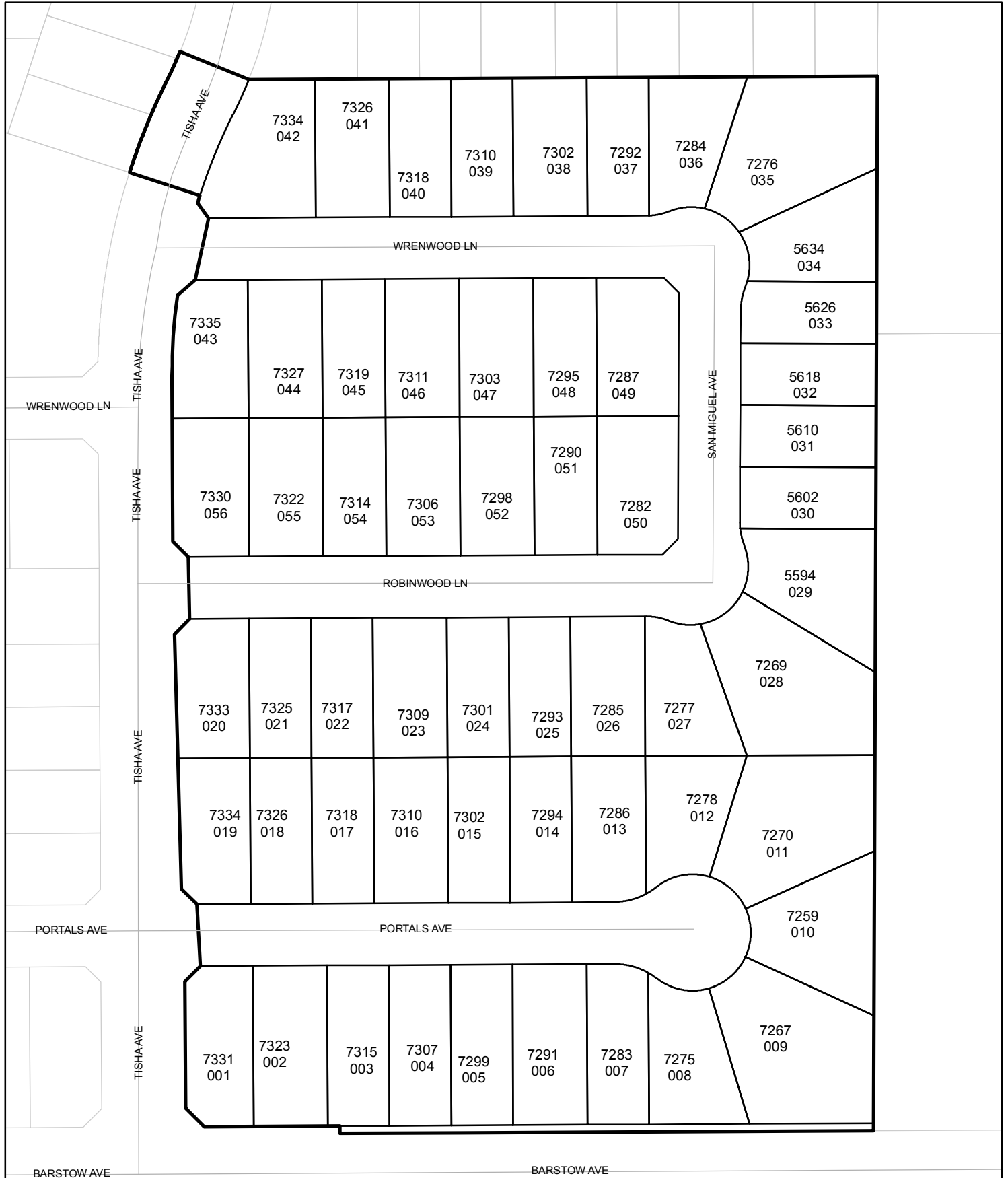




Street Names, Addresses and (Lot Numbers) for T6037

Prepared on Mon Oct 22 13:40:22 2018



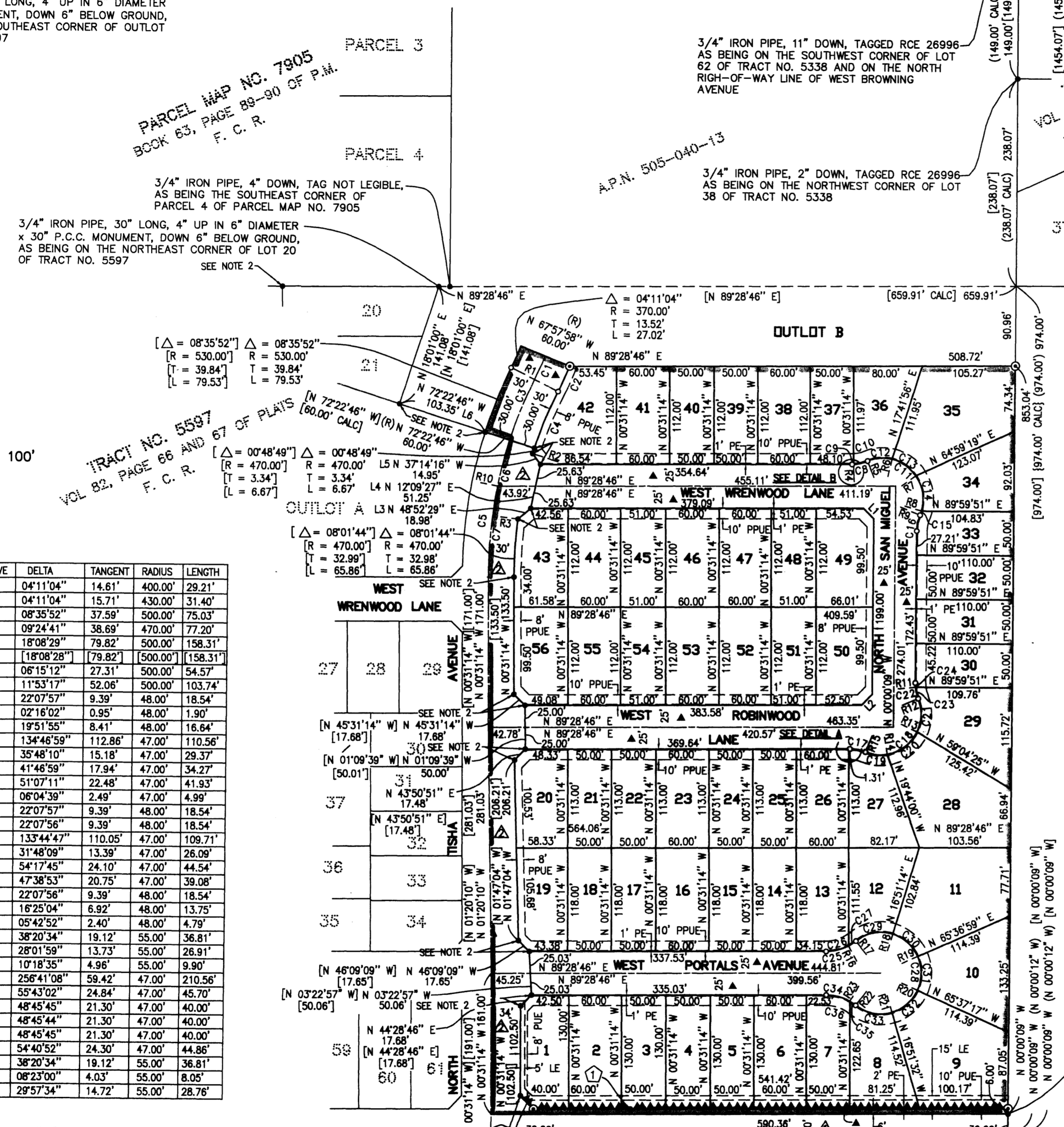
TRACT NO. 6037

PHASE II OF VESTING TENTATIVE MAP NO. 5597
A PLANNED DEVELOPMENT

BEING A MERGER AND RESUBDIVISION OF LOTS 10 AND 15 OF MUSCATEL ESTATE, IN THE COUNTY OF FRESNO, STATE OF CALIFORNIA, ACCORDING TO THE MAP RECORDED IN BOOK 4 OF PLATS, AT PAGE 67, FRESNO COUNTY RECORDS AND OUTLOT B OF TRACT NO. 5597 ACCORDING TO THE MAP RECORDED IN VOLUME 82 OF PLATS, AT PAGES 66 AND 67, FRESNO COUNTY RECORDS
IN THE CITY OF FRESNO, COUNTY OF FRESNO, STATE OF CALIFORNIA
SURVEYED AND PLATTED IN MARCH 2013, BY BRET A. GIANNETTA
CONSISTING OF TWO SHEETS
SHEET TWO OF TWO SHEETS

MONUMENTS:

① 3/4" IRON PIPE, 30" LONG, 4" UP IN 6" DIAMETER x 30" P.C.C. MONUMENT, DOWN 6" BELOW GROUND, AS BEING ON THE SOUTHEAST CORNER OF OUTLOT B OF TRACT NO. 5597



CURVE	DELTA	TANGENT	RADIUS	LENGTH
C1	04°11'04"	14.61'	400.00'	29.21'
C2	04°11'04"	15.71'	430.00'	31.40'
C3	08°35'52"	37.59'	500.00'	75.03'
C4	09°24'41"	38.69'	470.00'	77.20'
C5	18°08'28"	79.82'	500.00'	158.31'
C6	06°15'12"	27.31'	500.00'	54.57'
C7	11°53'17"	52.06'	500.00'	103.74'
C8	22°07'57"	9.39'	48.00'	18.54'
C9	02°16'02"	0.95'	48.00'	1.90'
C10	19°51'55"	8.41'	48.00'	16.64'
C11	13°46'59"	112.86'	47.00'	110.56'
C12	35°48'10"	15.18'	47.00'	29.37'
C13	41°48'59"	17.94'	47.00'	34.27'
C14	51°07'11"	22.48'	47.00'	41.93'
C15	06°04'39"	2.49'	47.00'	4.99'
C16	22°07'57"	9.39'	48.00'	18.54'
C17	22°07'56"	9.39'	48.00'	18.54'
C18	13°44'47"	110.05'	47.00'	109.71'
C19	31°48'09"	13.39'	47.00'	26.09'
C20	54°17'45"	24.10'	47.00'	44.54'
C21	47°38'53"	20.75'	47.00'	39.08'
C22	22°07'56"	9.39'	48.00'	18.54'
C23	16°25'04"	6.92'	48.00'	13.75'
C24	05°42'52"	2.40'	48.00'	4.79'
C25	38°20'34"	19.12'	55.00'	36.81'
C26	28°01'59"	13.73'	55.00'	26.91'
C27	10°18'35"	4.96'	55.00'	9.90'
C28	25°41'08"	59.42'	47.00'	210.56'
C29	55°43'02"	24.84'	47.00'	45.70'
C30	48°45'45"	21.30'	47.00'	40.00'
C31	48°45'44"	21.30'	47.00'	40.00'
C32	48°45'45"	21.30'	47.00'	40.00'
C33	54°40'52"	24.30'	47.00'	44.86'
C34	38°20'34"	19.12'	55.00'	36.81'
C35	08°23'00"	4.03'	55.00'	8.05'
C36	29°57'34"	14.72'	55.00'	28.76'

BASIS OF BEARINGS

THE SOUTH LINE OF THE NORTHEAST QUARTER OF SECTION 8, TOWNSHIP 13 SOUTH, RANGE 19 EAST, MOUNT DIABLO BASE AND MERIDIAN, TAKEN AS BEARING NORTH 89°28'46" EAST AS PER TRACT NO. 5338 RECORDED IN VOLUME 75 OF PLATS, AT PAGES 62 THROUGH 65, INCLUSIVE, FRESNO COUNTY RECORDS.

NOTE:

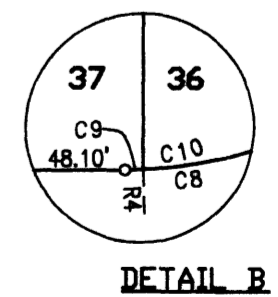
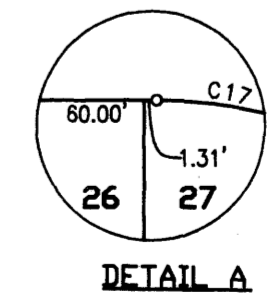
- SET 3/4" x 30" IRON PIPE, 6" DOWN, TAGGED P.L.S. 8177 AT ALL LOT CORNERS AND ANGLE POINTS
- 3/4" IRON PIPE, 30" LONG, 6" DOWN TAGGED RCE 26996 AS BEING AN ANGLE POINT ON THE BOUNDARY OF TRACT NO. 5597, OR AS NOTED

LEGEND:

- MONUMENT FOUND AND ACCEPTED AS NOTED
- SET 3/4" IRON PIPE, 30" LONG, 6" DOWN BELOW GROUND, TAGGED P.L.S. 8177
- SET 3/4" IRON PIPE, 30" LONG, 4" UP IN 6" DIAMETER x 30" P.C.C. MONUMENT, DOWN 6" BELOW GROUND, TAGGED R.C.E. 26996
- NOW OFFERED FOR DEDICATION FOR PUBLIC STREET EASEMENT PURPOSES
- INDICATES RELINQUISHMENT OF DIRECT ACCESS RIGHTS
- RECORD DATA AS PER TRACT NO. 5338, RECORDED IN VOLUME 75 OF PLATS, AT PAGES 62 THROUGH 65, F.C.R.
- RECORD DATA AS PER TRACT NO. 5597, RECORDED IN VOLUME 82 OF PLATS, AT PAGES 66 AND 67, F.C.R.
- RECORD DATA AS PER RECORD OF SURVEY RECORDED IN BOOK 10, PAGE 33 OF F.C.R.
- PREVIOUSLY DEEDED IN FEE PER DEED RECORDED IN BOOK 310 PAGE 465 OF DEEDS F.C.R.
- PREVIOUSLY DEDICATED FOR PUBLIC STREET PURPOSES AS PER TRACT NO. 5597, RECORDED IN VOLUME 82 OF PLATS, AT PAGES 66 AND 67, F.C.R.
- DENOTES RADIAL BEARING TO CURVE
- CALC CALCULATED FROM RECORD DATA
- F.C.R. FRESNO COUNTY RECORDS
- PE PEDESTRIAN EASEMENT NOW OFFERED FOR DEDICATION FOR PUBLIC USE
- PPUE PLANTING AND PUBLIC UTILITY EASEMENT NOW OFFERED FOR DEDICATION FOR PUBLIC USE
- LE LANDSCAPE EASEMENT NOW OFFERED FOR DEDICATION FOR PUBLIC USE
- PUE PUBLIC UTILITY EASEMENT NOW OFFERED FOR DEDICATION FOR PUBLIC USE
- M.D.B. & M. MOUNT DIABLO BASE & MERIDIAN
- BLUE BORDER INDICATES THE LIMITS OF THIS SUBDIVISION

RADIAL	DIRECTION
R1	N 63°46'54" W
R2	N 73°11'35" W
R3	N 82°29'30" W
R4	S 02°47'16" E
R5	N 22°39'11" W
R6	N 13°08'59" E
R7	N 54°55'58" E
R8	S 73°56'51" E
R9	S 67°52'12" E
R10	N 78°37'57" W
R11	S 84°16'59" W
R12	N 67°51'55" E
R13	S 64°29'12" E
R14	S 10°11'27" E
R15	S 21°36'42" W
R16	S 28°33'13" E
R17	N 36°51'48" W
R18	N 16°51'14" E
R19	N 65°36'58" E
R20	S 65°37'17" E
R21	S 16°51'32" E
R22	S 37°49'20" W
R23	N 29°26'20" E

LINE	DIRECTION	DISTANCE
L1	N 45°15'42" W	17.60'
L2	N 44°44'18" E	17.76'
L3	N 48°52'29" E	18.98'
L4	N 12°09'27" E	51.25'
L5	N 37°14'16" W	14.95'
L6	N 72°22'46" W	103.35' CALC



THE CENTER QUARTER CORNER OF SECTION 8, T 13 S, R 19 E, M.D.B. & M. LOCATION FALLS ON MANHOLE ESTABLISHED PER C.R.#8152

3/4" IRON PIPE, FLUSH WITH GROUND, TAGGED LS 5510 AS BEING ON THE EAST LINE OF THE WEST HALF OF THE NORTHEAST QUARTER OF SECTION 8, T 13 S, R 19 E, M.D.B. & M. AND 29.86' NORTH OF THE SOUTH LINE OF THE NORTHEAST QUARTER OF SAID SECTION 8

3/4" IRON PIPE, FLUSH WITH AC, TAGGED RCE 26996 AS BEING THE EAST QUARTER CORNER OF SECTION 8, T 13 S, R 19 E, M.D.B. & M. C.R.#6818