

TRACT NO. 6033

PHASE I OF VESTING TENTATIVE MAP NO. 6033

A PLANNED DEVELOPMENT

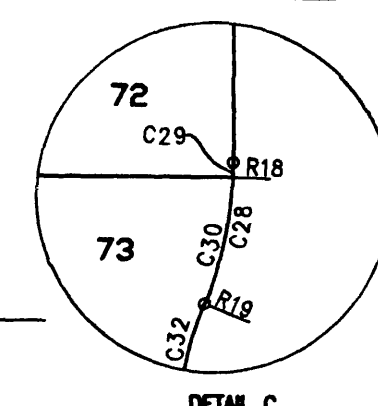
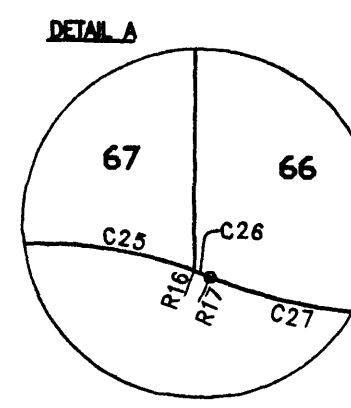
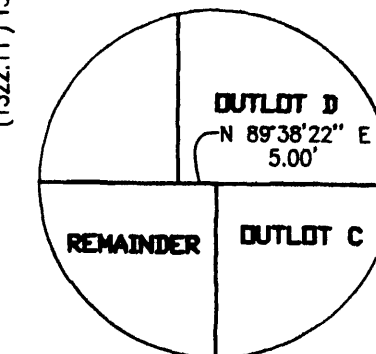
BEING A SUBDIVISION OF A PORTION OF LOT 5 OF THE SUBDIVISION OF SECTION 27, TOWNSHIP 13 SOUTH, RANGE 21 EAST MOUNT DIABLO BASE AND MERIDIAN, RECORDED IN BOOK 5, PAGE 14 OF PLATS, FRESNO COUNTY RECORDS. IN THE CITY OF FRESNO, COUNTY OF FRESNO, STATE OF CALIFORNIA SURVEYED AND PLATTED IN MARCH 2014, BY GARY G. GIANNETTA

CONSISTING OF TWO SHEETS
SHEET TWO OF TWO SHEETS

LEGEND:

- MONUMENT FOUND AND ACCEPTED AS NOTED
- SET 3/4" IRON PIPE, 30" LONG, 6" DOWN BELOW GROUND, TAGGED R.C.E. 26996
- ⊙ SET 3/4" IRON PIPE, 30" LONG, 4" UP IN 6" DIAMETER x 30" P.C.C. MONUMENT, DOWN 6" BELOW GROUND, TAGGED R.C.E. 26996
- ◇ SET 3/4" IRON PIPE, 30" LONG, 6" BELOW GROUND, TAGGED R.C.E. 26996 AS SHOWN AT 3.00' FROM NEAREST LOT CORNERS. (DISTANCES SHOWN ARE TO TRUE LOT CORNER)
- ▲ NOW OFFERED FOR DEDICATION FOR PUBLIC STREET EASEMENT PURPOSES
- ▲▲▲▲ INDICATES RELINQUISHMENT OF DIRECT ACCESS RIGHTS
- ▲▲▲▲▲ INDICATES RELINQUISHMENT OF DIRECT VEHICULAR ACCESS RIGHTS
- () RECORD DATA AS PER TRACT NO. 5717, RECORDED IN VOLUME 80 OF PLATS, AT PAGES 56 AND 57, F.C.R.
- CALC CALCULATED FROM RECORD DATA
- F.C.R. FRESNO COUNTY RECORDS
- PE PEDESTRIAN EASEMENT NOW OFFERED FOR DEDICATION FOR PUBLIC USE
- LE LANDSCAPE EASEMENT NOW OFFERED FOR DEDICATION FOR PUBLIC USE
- PUE PUBLIC UTILITY EASEMENT NOW OFFERED FOR DEDICATION FOR PUBLIC USE
- BPE BIKE/PEDESTRIAN TRAIL EASEMENT NOW OFFERED FOR DEDICATION FOR PUBLIC USE
- M.D.B. & M. MOUNT DIABLO BASE & MERIDIAN
- BLUE BORDER INDICATES THE LIMITS OF THIS SUBDIVISION
- ▲ PREVIOUSLY DEDICATED FOR PUBLIC STREET PURPOSES AS PER THE SUBDIVISION MAP OF SECTION 27, T 13 S, R 21 E, M.D.B. & M., RECORDED IN VOLUME 5 PAGE 14 OF PLATS, F.C.R.
- ▲ PREVIOUSLY DEDICATED FOR PUBLIC STREET PURPOSES AS PER DOCUMENT RECORDED SEPTEMBER 15, 2008 AS DOC. NO. 2008-0131500, F.C.R.
- F.I.D. 20' FRESNO IRRIGATION DISTRICT PIPELINE EASEMENT RECORDED MARCH 28, 2008 AS DOC. NO. 2008-0046087, F.C.R.

SCALE: 1" = 100'



DETAIL A
DETAIL B
DETAIL C

BASIS OF BEARINGS

THE WEST LINE OF THE NORTHWEST QUARTER OF SECTION 27, TOWNSHIP 13 SOUTH, RANGE 21 EAST, MOUNT DIABLO BASE AND MERIDIAN, TAKEN AS BEARING NORTH 00°16'11" WEST AS PER TRACT NO. 5717 RECORDED IN VOLUME 80 OF PLATS, AT PAGES 56 AND 57, FRESNO COUNTY RECORDS.

NOTE:

1. SET 3/4" x 30" IRON PIPE, 6" DOWN, TAGGED RCE 26996 AT ALL LOT CORNERS AND ANGLE POINTS
2. OUTLOTS A DEDICATED IN FEE TO THE CITY OF FRESNO FOR COMMON OPEN SPACE AND PEDESTRIAN ACCESS PURPOSES SUBJECT TO CITY ACCEPTANCE OF DEVELOPER INSTALLED REQUIRED IMPROVEMENTS.
3. OUTLOT B AND C ARE FOR FUTURE DEVELOPMENT
4. OUTLOT D TO BE DEEDED TO THE EXISTING PARCEL TO THE NORTH

LINE	DIRECTION	DISTANCE
L1	N 45°05'56" E	21.39'
L2	N 44°41'06" E	19.81'
L3	N 45°20'15" W	19.79'
L4	N 45°18'11" W	21.21'
L5	N 44°43'49" E	21.21'
L6	N 44°43'49" E	19.80'
L7	N 45°20'13" W	19.79'
L8	N 41°36'37" E	18.72'
L9	N 45°20'13" W	19.79'
L10	N 44°38'26" E	19.80'
L11	N 44°38'26" E	19.80'
L12	N 45°21'34" W	19.80'
L13	N 44°39'47" E	19.81'
L14	N 45°20'13" W	19.79'
L15	N 45°21'34" W	19.80'
L16	N 45°21'34" W	19.80'
L17	N 44°38'26" E	19.80'
L18	N 44°38'26" E	19.81'
L19	N 44°38'26" E	21.21'
L20	N 45°21'34" W	21.21'
L21	N 45°20'13" W	19.79'
L22	N 44°39'47" E	19.81'

RADIAL	DIRECTION
R1	N 89°28'30" W
R2	N 89°33'14" W
R3	S 67°35'52" W
R4	N 63°56'49" W
R5	N 14°52'39" W
R6	N 21°46'19" E
R7	N 22°28'35" W
R8	N 03°42'57" W
R9	N 43°57'40" E
R10	S 88°33'09" E
R11	S 88°10'55" E
R12	N 87°06'36" E
R13	S 67°30'28" W
R14	N 81°42'51" W
R15	N 30°50'16" W
R16	N 19°31'58" E
R17	S 50°22'12" E
R18	S 88°05'59" E
R19	N 68°13'37" W
R20	S 68°50'10" W
R21	S 18°27'56" W
R22	S 22°29'31" E
R23	N 14°28'50" W
R24	S 21°46'23" W
R25	S 03°47'17" E
R26	S 54°09'29" E
R27	N 75°28'19" E
R28	N 67°33'11" E

CURVE	DELTA	TANGENT	RADIUS	LENGTH
C1	22°07'57"	9.68'	49.50'	19.12'
C2	134°10'27"	107.85'	45.50'	106.55'
C3	48°27'19"	20.47'	45.50'	38.48'
C4	49°04'10"	20.77'	45.50'	38.97'
C5	36°38'58"	15.07'	45.50'	29.10'
C6	22°07'57"	9.68'	49.50'	19.12'
C7	22°07'57"	9.68'	49.50'	19.12'
C8	134°18'40"	108.01'	45.50'	106.66'
C9	18°46'38"	7.52'	45.50'	14.91'
C10	47°40'37"	20.10'	45.50'	37.86'
C11	47°29'11"	20.01'	45.50'	37.71'
C12	20°22'14"	8.17'	45.50'	16.18'
C13	22°07'57"	9.68'	49.50'	19.12'
C14	06°08'33"	13.34'	250.00'	26.66'
C15	06°06'33"	14.59'	273.50'	29.16'
C16	06°03'51"	13.24'	250.00'	26.46'
C17	06°03'51"	14.49'	273.50'	28.95'
C18	06°03'51"	12.00'	226.50'	23.97'
C19	03°32'01"	6.99'	226.50'	13.97'
C20	02°31'50"	5.00'	226.50'	10.00'
C21	22°07'57"	9.68'	49.50'	19.12'
C22	134°15'54"	107.88'	45.50'	106.62'
C23	30°46'40"	12.52'	45.50'	24.44'
C24	50°52'35"	21.64'	45.50'	40.40'
C25	50°22'12"	21.40'	45.50'	40.00'
C26	02°14'27"	0.89'	45.50'	1.78'
C27	22°07'57"	9.68'	49.50'	19.12'
C28	22°07'57"	9.68'	49.50'	19.12'
C29	02°15'35"	0.98'	49.50'	1.95'
C30	19°52'22"	8.67'	49.50'	17.17'
C31	134°15'54"	107.88'	45.50'	106.62'
C32	42°56'13"	17.89'	45.50'	34.10'
C33	50°22'12"	21.40'	45.50'	40.00'
C34	40°57'29"	16.99'	45.50'	32.52'
C35	22°07'57"	9.68'	49.50'	19.12'
C36	08°00'41"	3.47'	49.50'	6.92'
C37	14°07'16"	6.13'	49.50'	12.20'
C38	22°07'57"	9.68'	49.50'	19.12'
C39	134°13'12"	107.77'	45.50'	106.59'
C40	25°33'40"	10.32'	45.50'	20.30'
C41	50°22'12"	21.40'	45.50'	40.00'
C42	50°22'12"	21.40'	45.50'	40.00'
C43	07°55'08"	3.15'	45.50'	6.29'
C44	22°07'57"	9.68'	49.50'	19.12'

POSITION FALLS ON SEWER MAINHOLE, TWO 6" SWING JETS, NORTH EAST, AS BEING THE WEST QUARTER CORNER OF SECTION 27, T 13 S, R 21 E, M.D.B. & M., C.R. 15609

2" BRASS CAP MARKED W/ "13" DOWN, IN MONUMENT WELL PER TIES PER RECORD, OF SURVEY RECORDED IN BOOK 44, PAGE 68, F.C.R. AS BEING THE CENTER QUARTER CORNER OF SECTION 27, T 13 S, R 21 E, M.D.B. & M.

