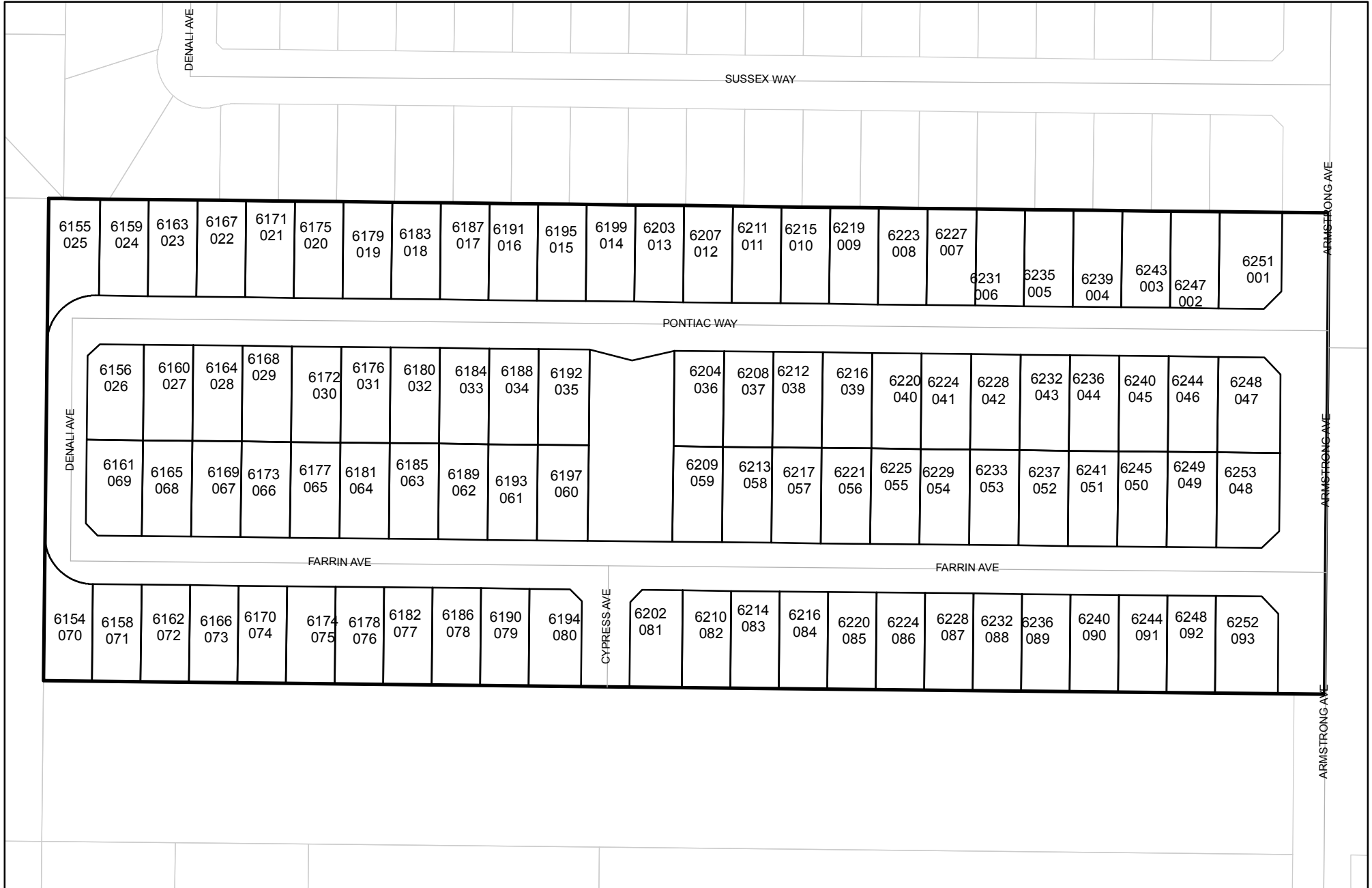




Prepared on Mon Oct 22 13:41:37 2018

Street Names, Addresses and (Lot Numbers) for T6028



FINAL MAP OF TRACT NO. 6028

BEING A SUBDIVISION OF PARCELS A & B
OF PARCEL MAP NO. 69-14
BOOK 1 OF PARCEL MAPS AT PAGE 66, FRESNO COUNTY RECORDS
IN THE CITY OF FRESNO, COUNTY OF FRESNO, STATE OF CALIFORNIA
SURVEYED AND PLATTED IN JANUARY 2013,
BY YAMABE & HORN ENGINEERING, INC.
CONSISTING OF 3 SHEETS
SHEET 3 OF 3

LEGEND

- MONUMENT FOUND & ACCEPTED AS NOTED UNLESS OTHERWISE NOTED
 - ⊙ SET 3/4" X 30" LONG IRON PIPE DOWN 6" IN 12" DIAMETER CONCRETE COLLAR TAGGED LS 7923
 - R1 () RECORD DATA PER THE FINAL MAP OF TRACT NO. 4993 RECORDED IN VOL. 70 OF PLATS AT PGS. 39-41, F.C.R.
 - R2 () RECORD DATA PER PARCEL MAP NO. 69-14 RECORDED IN BK. 1 OF PARCEL MAPS AT PG. 66, F.C.R.
 - R3 () RECORD DATA PER THE FINAL MAP OF TRACT NO. 5461 RECORDED IN VOL. 79 OF PLATS AT PGS. 11-17, F.C.R.
 - △ PREVIOUSLY RESERVED FOR ROAD PURPOSES PER GRANT DEED RECORDED 1/11/1883 IN VOL. 29 OF DEEDS AT PG. 553, F.C.R.
 - ▲ PREVIOUSLY DEDICATED FOR PUBLIC STREET PURPOSES BY THE FINAL MAP OF TRACT NO. 4993 R1 ()
 - ▲ PREVIOUSLY DEDICATED FOR PUBLIC STREET PURPOSES BY THE FINAL MAP OF TRACT NO. 5461 R3 ()
- THE REAL PROPERTY DESCRIBED BELOW IS DEDICATED AS AN EASEMENT FOR PUBLIC PURPOSES
- ◆ NOW OFFERED FOR DEDICATION FOR PUBLIC STREET EASEMENT PURPOSES
 - PUE PUBLIC UTILITY EASEMENT NOW OFFERED FOR DEDICATION FOR PUBLIC USE
 - PPUE PLANTING AND PUBLIC UTILITY EASEMENT NOW OFFERED FOR DEDICATION FOR PUBLIC USE
 - PE PEDESTRIAN EASEMENT NOW OFFERED FOR DEDICATION FOR PUBLIC USE
 - LE LANDSCAPE EASEMENT NOW OFFERED FOR DEDICATION FOR PUBLIC USE

THE REAL PROPERTY DESCRIBED BELOW IS DEDICATED IN FEE FOR PUBLIC PURPOSES

OUTLOT A IS DEDICATED IN FEE TO THE CITY OF FRESNO FOR PUBLIC OPEN SPACE PURPOSES SUBJECT TO CITY ACCEPTANCE OF DEVELOPER INSTALLED REQUIRED IMPROVEMENTS.

- CR CORNER RECORD ON FILE WITH THE FRESNO COUNTY SURVEYOR
- O.R.F.C. OFFICIAL RECORDS FRESNO COUNTY
- F.C.R. FRESNO COUNTY RECORDS
- CFR CALCULATED FROM RECORD DATA
- FCBCM FRESNO COUNTY BRASS CAP MONUMENT
- F.M.F.C.D. FRESNO METROPOLITAN FLOOD CONTROL DISTRICT
- IP IRON PIPE
- DN DOWN
- M.D.B. & M. MOUNT DIABLO BASE & MERIDIAN

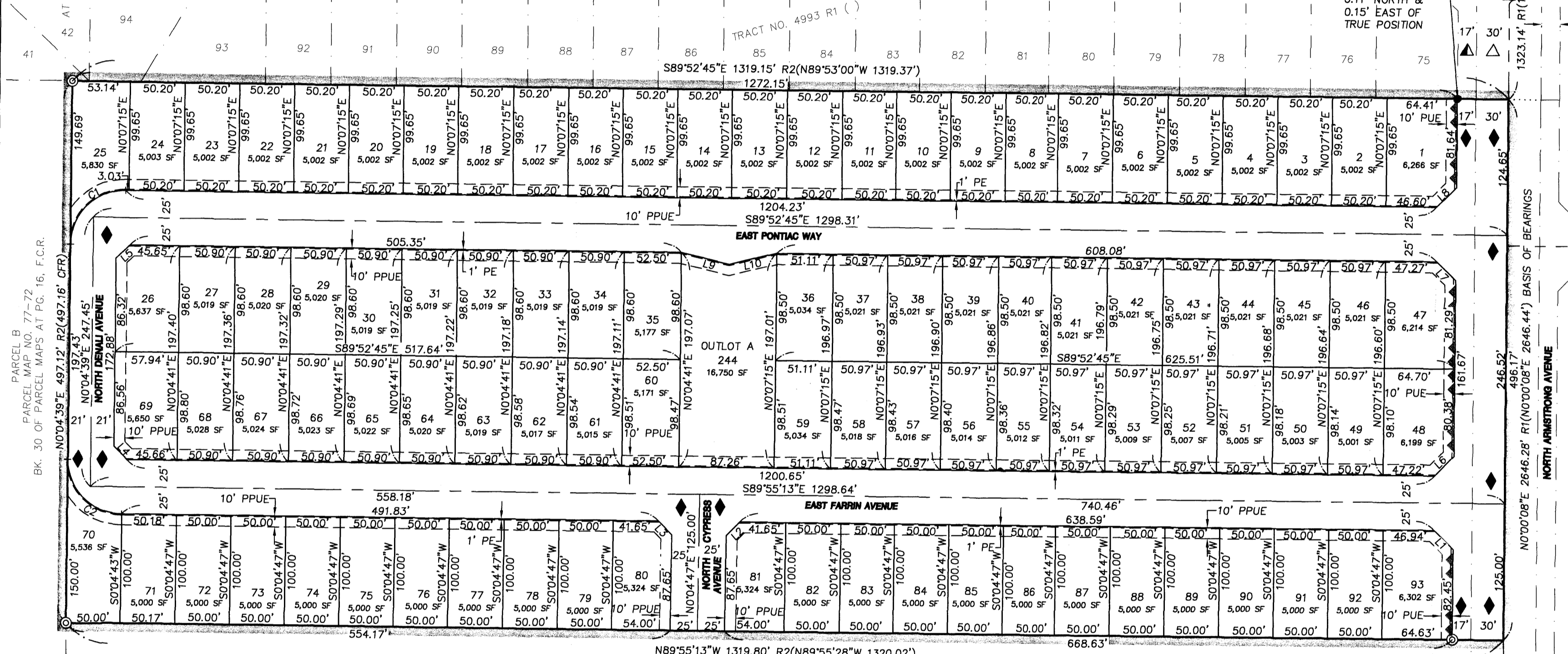
- SECTION LINE
- EXISTING PROPERTY LINE
- - - EASEMENT LINE
- BLUE BORDER INDICATES LIMITS OF SUBDIVISION
- ... INDICATES EXTENSION OF LINE TO DIMENSION POINT AS SHOWN
- ▲ INDICATES RELINQUISHMENT OF DIRECT ACCESS RIGHTS

TRACT NO. 4646
VOL. 65 OF PLATS
AT PGS. 82 & 83, F.C.R.

PARCEL MAP NO. 77-72
BK. 30 OF PARCEL MAPS AT PG. 16, F.C.R.

NORTH 1/4 CORNER
SECTION 22, T.13S., R.21E,
M.D.B. & M. REESTABLISHED
POSITION ON MANHOLE FROM
TIES PER CR 8300

3/4" IP DN 12"
IN 12" DIAMETER
CONCRETE COLLAR
TAGGED LS 6919
MONUMENT IS
0.11' NORTH &
0.15' EAST OF
TRUE POSITION



NOTE

1. SET 3/4" X 30" LONG IRON PIPE DOWN 6" TAGGED LS 7923 AT ALL LOT CORNERS, ANGLE POINTS AND POINTS OF CURVATURE, UNLESS OTHERWISE NOTED.

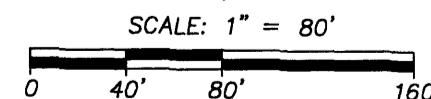
BASIS OF BEARINGS:

THE EAST LINE OF THE NORTHWEST QUARTER OF SECTION 22, TOWNSHIP 13 SOUTH, RANGE 21 EAST, MOUNT DIABLO BASE, AND MERIDIAN, AS SHOWN ON THE FINAL MAP OF TRACT NO. 4993, RECORDED IN VOLUME 70 OF PLATS AT PAGES 39 THROUGH 41, FRESNO COUNTY RECORDS. TAKEN TO BE NORTH 00°00'08" EAST.

LINE	DIRECTION	DISTANCE
L1	N44°57'40"W	24.84'
L2	S45°04'47"W	17.47'
L3	N44°55'13"W	17.47'
L4	S44°54'59"E	17.36'
L5	S45°06'39"W	17.37'
L6	N45°02'24"E	24.98'
L7	N44°56'59"W	24.38'
L8	N45°03'37"E	25.45'
L9	N76°22'08"W	44.94'
L10	N76°36'46"E	44.95'

CURVE	RADIUS	DELTA	LENGTH
C1	50.00'	90°02'36"	78.58'
C2	50.00'	89°59'52"	78.54'

CENTER 1/4 CORNER
SECTION 22, T.13S., R.21E,
M.D.B. & M. REESTABLISHED
POSITION ON MANHOLE FROM
TIES PER CR 8198



**YAMABE & HORN
ENGINEERING, INC.**

2985 N. BURL AVE.
SUITE 101
FRESNO, CA 93727

TEL (559) 244-3123
FAX (559) 244-3120