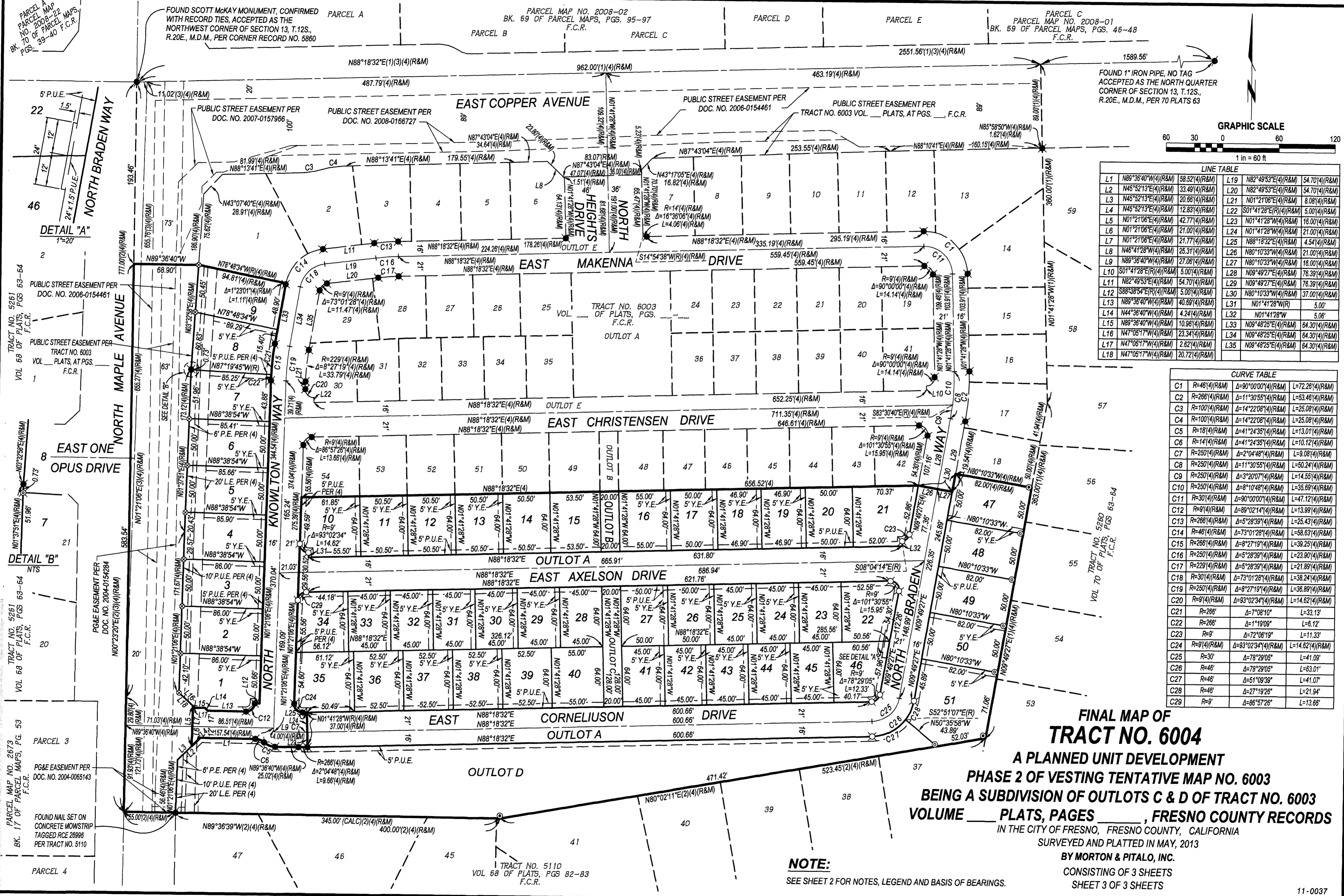




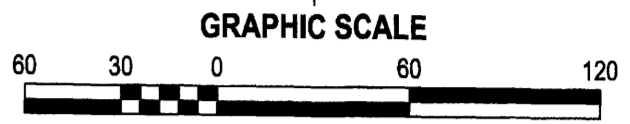
Prepared on Mon Oct 22 13:41:58 2018

Street Names, Addresses and (Lot Numbers) for T6004





FOUND 1" IRON PIPE, NO TAG
ACCEPTED AS THE NORTH QUARTER
CORNER OF SECTION 13, T.12S.,
R.20E., M.D.M., PER 70 PLATS 63



LINE TABLE

L1	N89°36'40"W(4)(R&M)	58.52(4)(R&M)	L19	N82°49'53"E(4)(R&M)	54.70(4)(R&M)
L2	N45°52'13"E(4)(R&M)	33.49(4)(R&M)	L20	N82°49'53"E(4)(R&M)	54.70(4)(R&M)
L3	N45°52'13"E(4)(R&M)	20.68(4)(R&M)	L21	N01°21'06"E(4)(R&M)	8.08(4)(R&M)
L4	N45°52'13"E(4)(R&M)	12.83(4)(R&M)	L22	S01°41'28"E(R)(4)(R&M)	5.00(4)(R&M)
L5	N01°21'06"E(4)(R&M)	42.77(4)(R&M)	L23	N01°41'28"W(4)(R&M)	16.00(4)(R&M)
L6	N01°21'06"E(4)(R&M)	21.00(4)(R&M)	L24	N01°41'28"W(4)(R&M)	21.00(4)(R&M)
L7	N01°21'06"E(4)(R&M)	21.77(4)(R&M)	L25	N88°18'32"E(4)(R&M)	4.54(4)(R&M)
L8	N48°41'28"W(4)(R&M)	26.31(4)(R&M)	L26	N80°10'33"W(4)(R&M)	21.00(4)(R&M)
L9	N89°36'40"W(4)(R&M)	27.06(4)(R&M)	L27	N80°10'33"W(4)(R&M)	16.00(4)(R&M)
L10	S01°41'28"E(R)(4)(R&M)	5.00(4)(R&M)	L28	N09°48'27"E(4)(R&M)	76.39(4)(R&M)
L11	N82°49'53"E(4)(R&M)	54.70(4)(R&M)	L29	N09°48'27"E(4)(R&M)	76.39(4)(R&M)
L12	S88°38'54"E(R)(4)(R&M)	5.00(4)(R&M)	L30	N80°10'33"W(4)(R&M)	37.00(4)(R&M)
L13	N89°36'40"W(4)(R&M)	40.69(4)(R&M)	L31	N01°41'28"W(R)	5.00'
L14	N44°36'40"W(4)(R&M)	4.24(4)(R&M)	L32	N01°41'28"W	5.06'
L15	N89°36'40"W(4)(R&M)	10.96(4)(R&M)	L33	N09°48'25"E(4)(R&M)	64.30(4)(R&M)
L16	N47°05'17"W(4)(R&M)	23.34(4)(R&M)	L34	N09°48'25"E(4)(R&M)	64.30(4)(R&M)
L17	N47°05'17"W(4)(R&M)	2.62(4)(R&M)	L35	N09°48'25"E(4)(R&M)	64.30(4)(R&M)
L18	N47°05'17"W(4)(R&M)	20.72(4)(R&M)			

CURVE TABLE

C1	R=48(4)(R&M)	Δ=90°00'00"(4)(R&M)	L=72.26(4)(R&M)
C2	R=266(4)(R&M)	Δ=11°30'55"(4)(R&M)	L=53.46(4)(R&M)
C3	R=100(4)(R&M)	Δ=14°22'08"(4)(R&M)	L=25.08(4)(R&M)
C4	R=100(4)(R&M)	Δ=14°22'08"(4)(R&M)	L=25.08(4)(R&M)
C5	R=18(4)(R&M)	Δ=41°24'35"(4)(R&M)	L=13.01(4)(R&M)
C6	R=14(4)(R&M)	Δ=41°24'35"(4)(R&M)	L=10.12(4)(R&M)
C7	R=250(4)(R&M)	Δ=2°04'48"(4)(R&M)	L=9.08(4)(R&M)
C8	R=250(4)(R&M)	Δ=11°30'55"(4)(R&M)	L=50.24(4)(R&M)
C9	R=250(4)(R&M)	Δ=3°20'07"(4)(R&M)	L=14.55(4)(R&M)
C10	R=250(4)(R&M)	Δ=8°10'48"(4)(R&M)	L=35.69(4)(R&M)
C11	R=30(4)(R&M)	Δ=90°00'00"(4)(R&M)	L=47.12(4)(R&M)
C12	R=9(4)(R&M)	Δ=89°02'14"(4)(R&M)	L=13.99(4)(R&M)
C13	R=266(4)(R&M)	Δ=5°28'39"(4)(R&M)	L=25.43(4)(R&M)
C14	R=46(4)(R&M)	Δ=73°01'28"(4)(R&M)	L=58.63(4)(R&M)
C15	R=266(4)(R&M)	Δ=8°27'19"(4)(R&M)	L=39.25(4)(R&M)
C16	R=250(4)(R&M)	Δ=5°28'39"(4)(R&M)	L=23.90(4)(R&M)
C17	R=229(4)(R&M)	Δ=5°28'39"(4)(R&M)	L=21.89(4)(R&M)
C18	R=30(4)(R&M)	Δ=73°01'28"(4)(R&M)	L=38.24(4)(R&M)
C19	R=250(4)(R&M)	Δ=8°27'19"(4)(R&M)	L=36.89(4)(R&M)
C20	R=9(4)(R&M)	Δ=93°02'34"(4)(R&M)	L=14.62(4)(R&M)
C21	R=266'	Δ=7°08'10"	L=33.13'
C22	R=266'	Δ=1°19'09"	L=6.12'
C23	R=9'	Δ=72°06'19"	L=11.33'
C24	R=9(4)(R&M)	Δ=93°02'34"(4)(R&M)	L=14.62(4)(R&M)
C25	R=30'	Δ=78°29'05"	L=41.09'
C26	R=46'	Δ=78°29'05"	L=63.01'
C27	R=46'	Δ=51°09'38"	L=41.07'
C28	R=46'	Δ=27°19'26"	L=21.94'
C29	R=9'	Δ=86°57'26"	L=13.66'

FINAL MAP OF TRACT NO. 6004
A PLANNED UNIT DEVELOPMENT
PHASE 2 OF VESTING TENTATIVE MAP NO. 6003
BEING A SUBDIVISION OF OUTLOTS C & D OF TRACT NO. 6003
VOLUME _____ PLATS, PAGES _____, FRESNO COUNTY RECORDS
 IN THE CITY OF FRESNO, FRESNO COUNTY, CALIFORNIA
 SURVEYED AND PLATTED IN MAY, 2013
BY MORTON & PITALO, INC.
 CONSISTING OF 3 SHEETS
 SHEET 3 OF 3 SHEETS

NOTE:
 SEE SHEET 2 FOR NOTES, LEGEND AND BASIS OF BEARINGS.