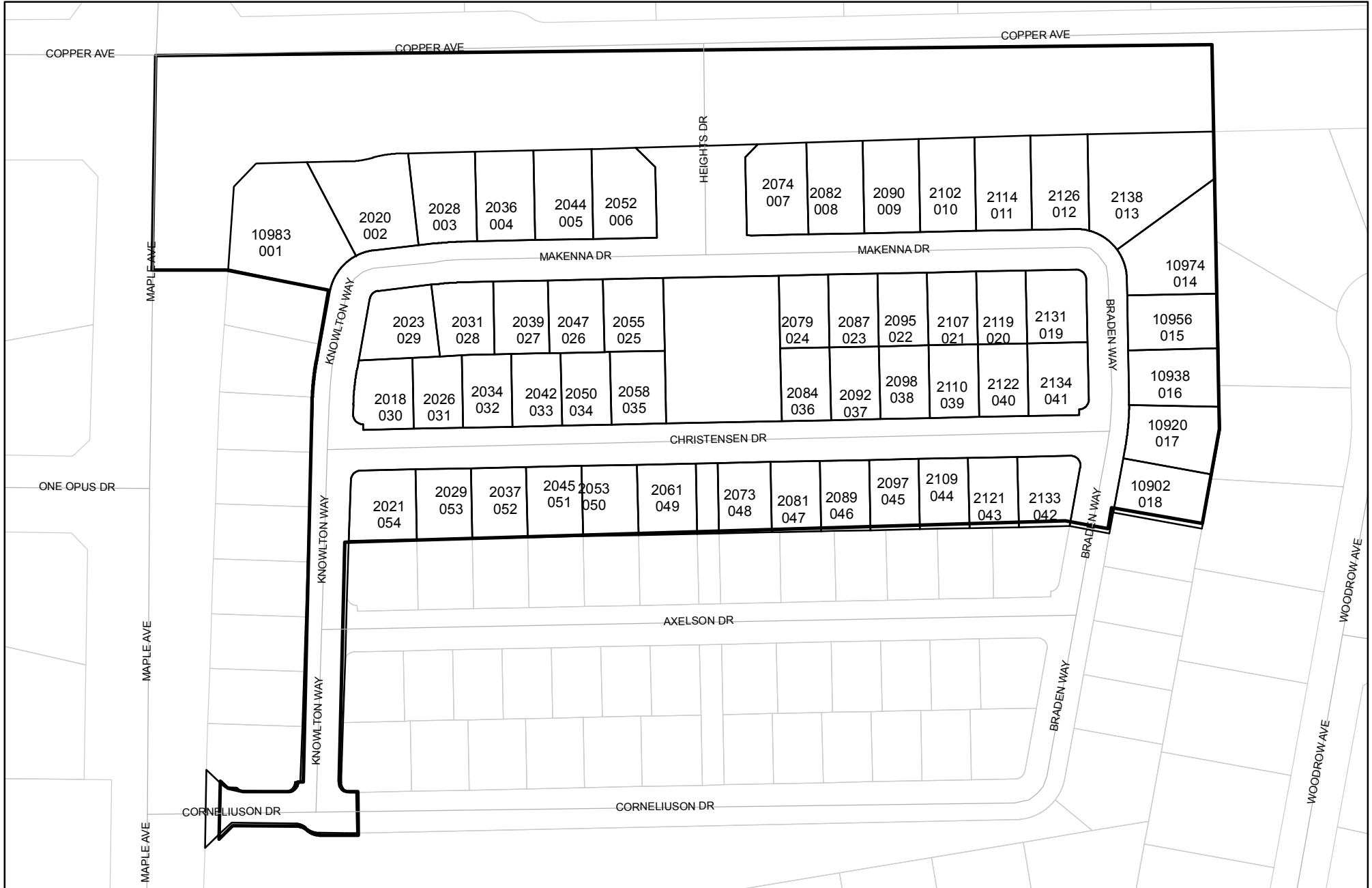
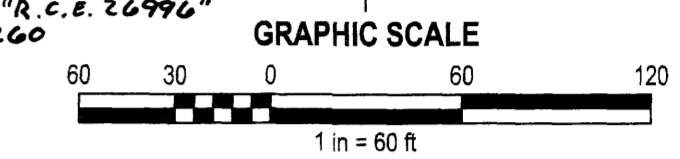
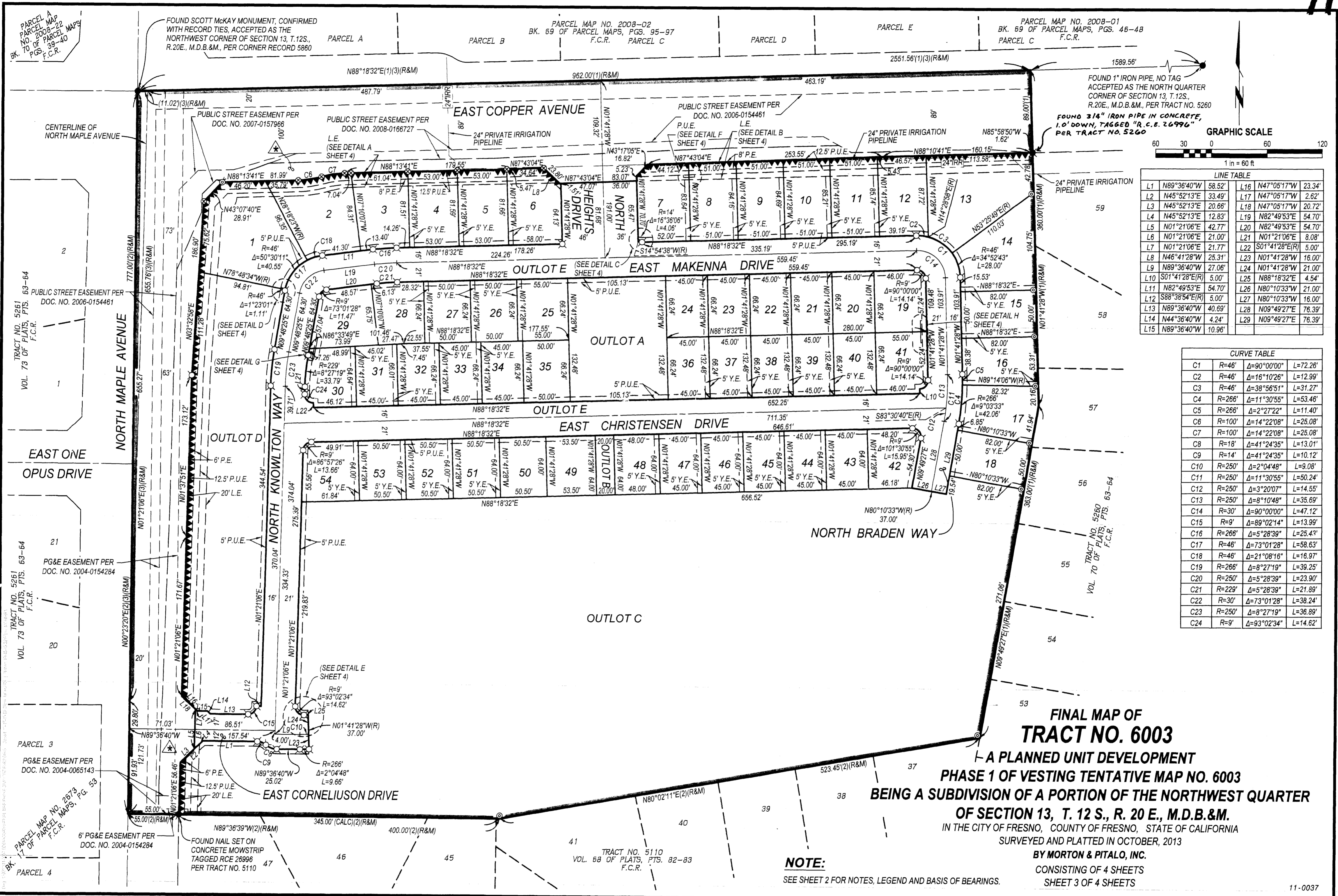




Prepared on Mon Oct 22 13:42:19 2018

Street Names, Addresses and (Lot Numbers) for T6003





LINE TABLE

L1	N89°36'40"W	58.52'	L16	N47°05'17"W	23.34'
L2	N45°52'13"E	33.49'	L17	N47°05'17"W	2.62'
L3	N45°52'13"E	20.86'	L18	N47°05'17"W	20.72'
L4	N45°52'13"E	12.83'	L19	N82°49'53"E	54.70'
L5	N01°21'06"E	42.77'	L20	N82°49'53"E	54.70'
L6	N01°21'06"E	21.00'	L21	N01°21'06"E	8.08'
L7	N01°21'06"E	21.77'	L22	S01°41'28"E(R)	5.00'
L8	N46°41'28"W	25.31'	L23	N01°41'28"W	16.00'
L9	N89°36'40"W	27.06'	L24	N01°41'28"W	21.00'
L10	S01°41'28"E(R)	5.00'	L25	N88°18'32"E	4.54'
L11	N82°49'53"E	54.70'	L26	N80°10'33"W	21.00'
L12	S88°38'54"E(R)	5.00'	L27	N80°10'33"W	16.00'
L13	N89°36'40"W	40.69'	L28	N09°49'27"E	76.39'
L14	N44°36'40"W	4.24'	L29	N09°49'27"E	76.39'
L15	N89°36'40"W	10.96'			

CURVE TABLE

C1	R=46'	Δ=90°00'00"	L=72.26'
C2	R=46'	Δ=16°10'26"	L=12.99'
C3	R=46'	Δ=38°56'51"	L=31.27'
C4	R=266'	Δ=11°30'55"	L=53.46'
C5	R=266'	Δ=2°27'22"	L=11.40'
C6	R=100'	Δ=14°22'08"	L=25.08'
C7	R=100'	Δ=14°22'08"	L=25.08'
C8	R=18'	Δ=41°24'35"	L=13.01'
C9	R=14'	Δ=41°24'35"	L=10.12'
C10	R=250'	Δ=2°04'48"	L=9.08'
C11	R=250'	Δ=11°30'55"	L=50.24'
C12	R=250'	Δ=3°20'07"	L=14.55'
C13	R=250'	Δ=8°10'48"	L=35.69'
C14	R=30'	Δ=90°00'00"	L=47.12'
C15	R=9'	Δ=89°02'14"	L=13.99'
C16	R=266'	Δ=5°28'39"	L=25.43'
C17	R=46'	Δ=73°01'28"	L=58.63'
C18	R=46'	Δ=21°08'16"	L=16.97'
C19	R=266'	Δ=8°27'19"	L=39.25'
C20	R=250'	Δ=5°28'39"	L=23.90'
C21	R=229'	Δ=5°28'39"	L=21.89'
C22	R=30'	Δ=73°01'28"	L=38.24'
C23	R=250'	Δ=8°27'19"	L=36.89'
C24	R=9'	Δ=93°02'34"	L=14.62'

FINAL MAP OF TRACT NO. 6003
 - A PLANNED UNIT DEVELOPMENT
PHASE 1 OF VESTING TENTATIVE MAP NO. 6003
BEING A SUBDIVISION OF A PORTION OF THE NORTHWEST QUARTER OF SECTION 13, T. 12 S., R. 20 E., M.D.B.&M.
 IN THE CITY OF FRESNO, COUNTY OF FRESNO, STATE OF CALIFORNIA
 SURVEYED AND PLATTED IN OCTOBER, 2013
BY MORTON & PITALO, INC.
 CONSISTING OF 4 SHEETS
SHEET 3 OF 4 SHEETS

NOTE:
 SEE SHEET 2 FOR NOTES, LEGEND AND BASIS OF BEARINGS.