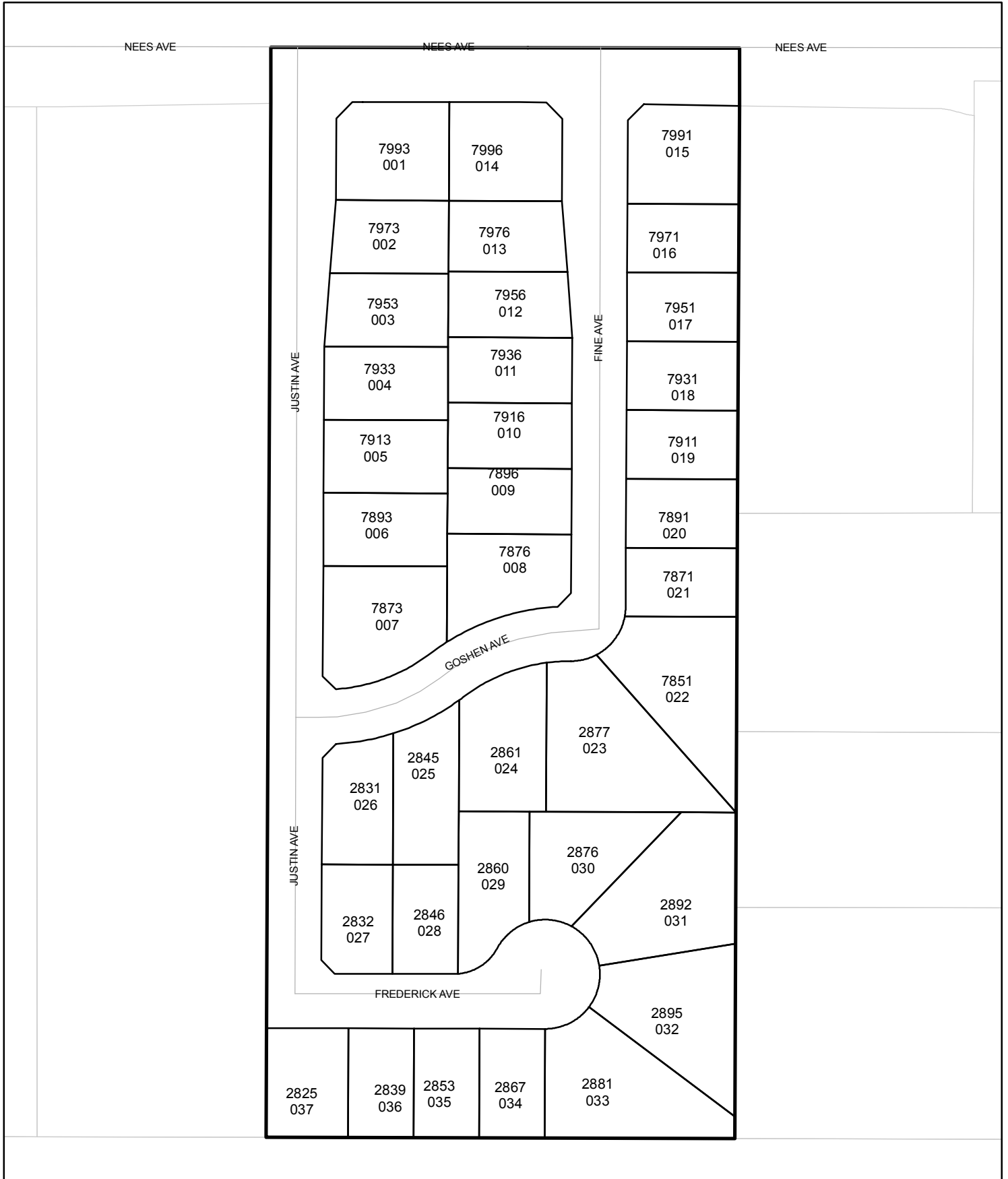




Street Names, Addresses and (Lot Numbers) for T6000

Prepared on Mon Jun 24 20:05:37 2013

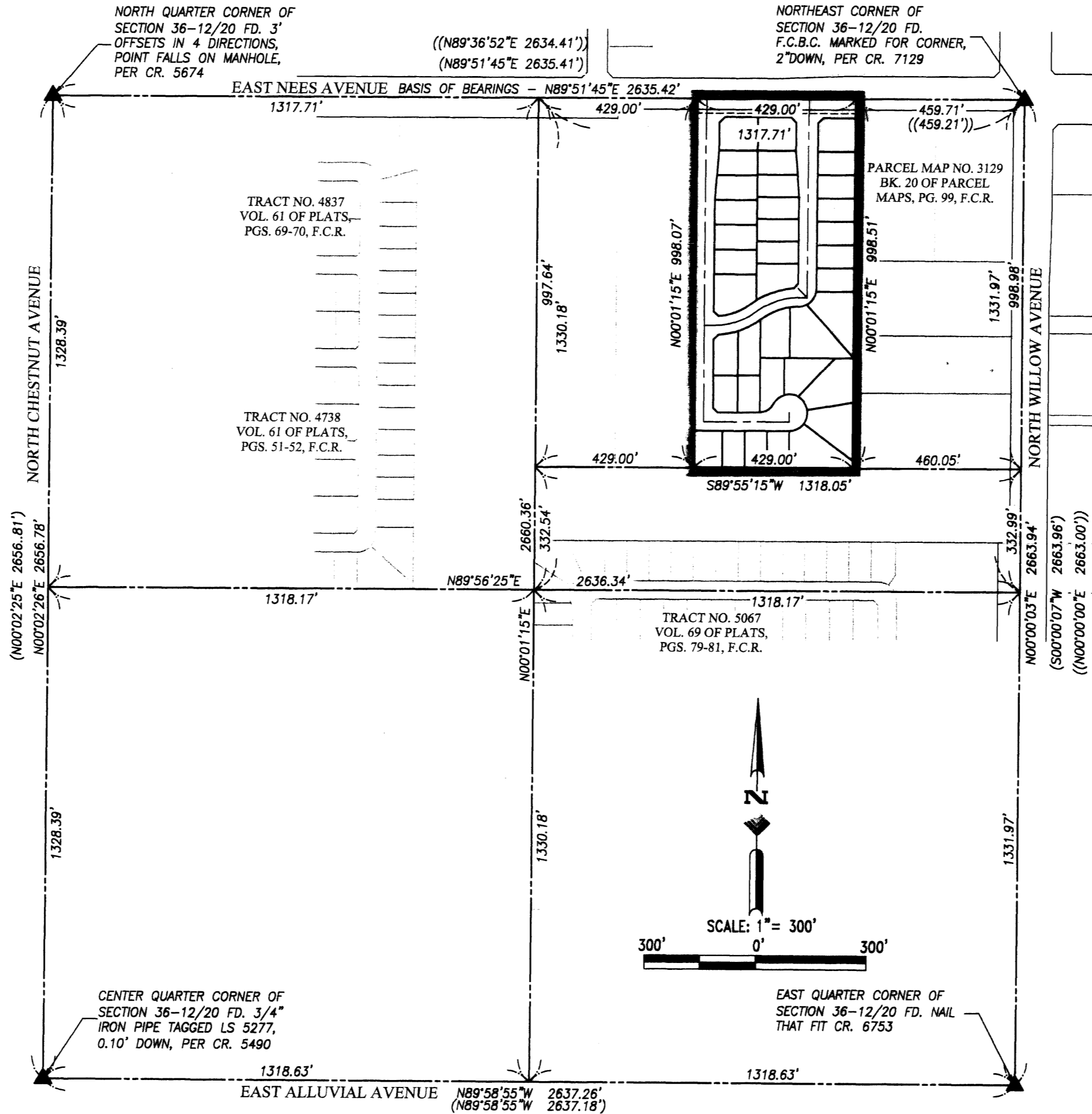


FINAL MAP OF TRACT NO. 6000

BEING A SUBDIVISION OF A PORTION OF THE NORTHEAST QUARTER OF SECTION 36, TOWNSHIP 12 SOUTH, RANGE 20 EAST, MOUNT DIABLO BASE AND MERIDIAN, IN THE CITY OF FRESNO, COUNTY FRESNO, STATE OF CALIFORNIA

SURVEYED AND PLATTED IN NOVEMBER 2011 BY QUAD KNOPF, INC.

CONSISTING OF 3 SHEETS SHEET 2 OF 3

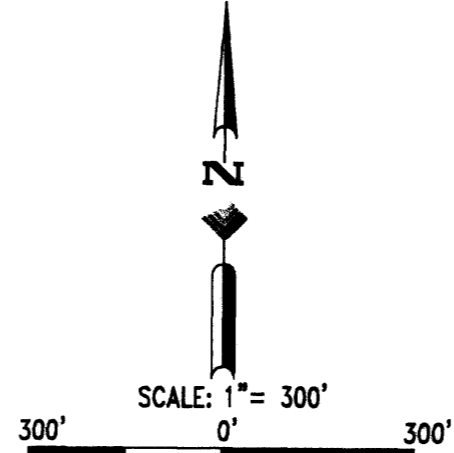


BASIS OF BEARINGS

THE NORTH LINE OF THE NORTHEAST QUARTER OF SECTION 36, T.12S., R.20E., M.D.B.&M. BEING $N\ 89^{\circ}\ 51'\ 45"\ E$, AS SHOWN ON THE MAP OF TRACT NO. 5067 RECORDED IN VOLUME 69 OF PLATS AT PAGES 79, 80 & 81, OF FRESNO COUNTY RECORDS.

LEGEND

- CR. CORNER RECORD ON FILE WITH FRESNO COUNTY SURVEYOR
- F.M.F.C.D. FRESNO METROPOLITAN FLOOD CONTROL DISTRICT
- F.C.R. FRESNO COUNTY RECORDS
- L.E. LANDSCAPE EASEMENT NOW OFFERED FOR DEDICATION FOR PUBLIC USE
- P.U.E. PUBLIC UTILITY EASEMENT NOW OFFERED FOR DEDICATION FOR PUBLIC USE
- P.E. PEDESTRIAN EASEMENT NOW OFFERED FOR DEDICATION FOR PUBLIC USE
- P.P.U.E. PLANTING AND PUBLIC UTILITY EASEMENT NOW OFFERED FOR DEDICATION FOR PUBLIC USE
- O.R.F.C. OFFICIAL RECORDS OF FRESNO COUNTY
- (R) RADIAL BEARING
- * INDICATES AREA NOW OFFERED FOR DEDICATION FOR PUBLIC STREET EASEMENT PURPOSES
- △ PREVIOUSLY DEDICATED FOR PUBLIC STREET EASEMENT PURPOSES PER DOCUMENT NO. 2012-0037397, RECORDED ON MARCH 15, 2012, O.R.F.C.
- EXISTING PERSPECTIVE RIGHT OF WAY
- BLUE BORDER INDICATES LIMITS OF THIS SUBDIVISION
- ////// RELINQUISHMENT OF DIRECT ACCESS RIGHTS BY THIS MAP
- () RECORD DATA PER MAP OF TRACT NO. 5067 RECORDED IN VOLUME 69 OF PLATS, AT PAGE 79-81, F.C.R., OR CALCULATED THEREFROM
- (()) RECORD DATA PER PARCEL MAP NO. 3129 RECORDED IN BOOK 20 OF PARCEL MAPS, AT PAGE 99, F.C.R., OR CALCULATED THEREFROM
- ▲ MONUMENT FOUND AND ACCEPTED AS DESCRIBED, UNLESS NOTED OTHERWISE
- SET 3/4" X 30" IRON PIPE TAGGED PLS 4714, UP 4" IN 6" DIAMETER X 30" P.C.C. MONUMENT, DOWN 6" SET NAIL AND PLS 4714 TAG IN SIDEWALK
- ◆ SET WITNESS CORNER 3/4" X 30" IRON PIPE TAGGED PLS 4714, DOWN 6", ON LOT LINE AS SHOWN AT 3.00' OFFSET FROM NEAREST LOT CORNER. (DISTANCES SHOWN ARE TO TRUE CORNER)



FINAL MAP OF TRACT NO. 6000

BEING A SUBDIVISION OF A PORTION OF THE NORTHEAST QUARTER OF SECTION 36, TOWNSHIP 12 SOUTH, RANGE 20 EAST, MOUNT Diablo BASE AND MERIDIAN, IN THE CITY OF FRESNO, COUNTY FRESNO, STATE OF CALIFORNIA

SURVEYED AND PLATTED IN NOVEMBER 2011
BY QUAD KNOFF, INC.

CONSISTING OF 3 SHEETS
SHEET 3 OF 3

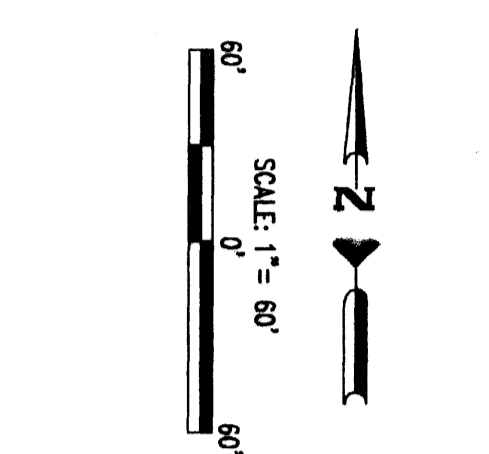
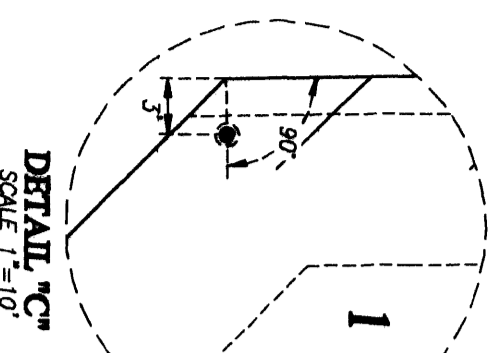
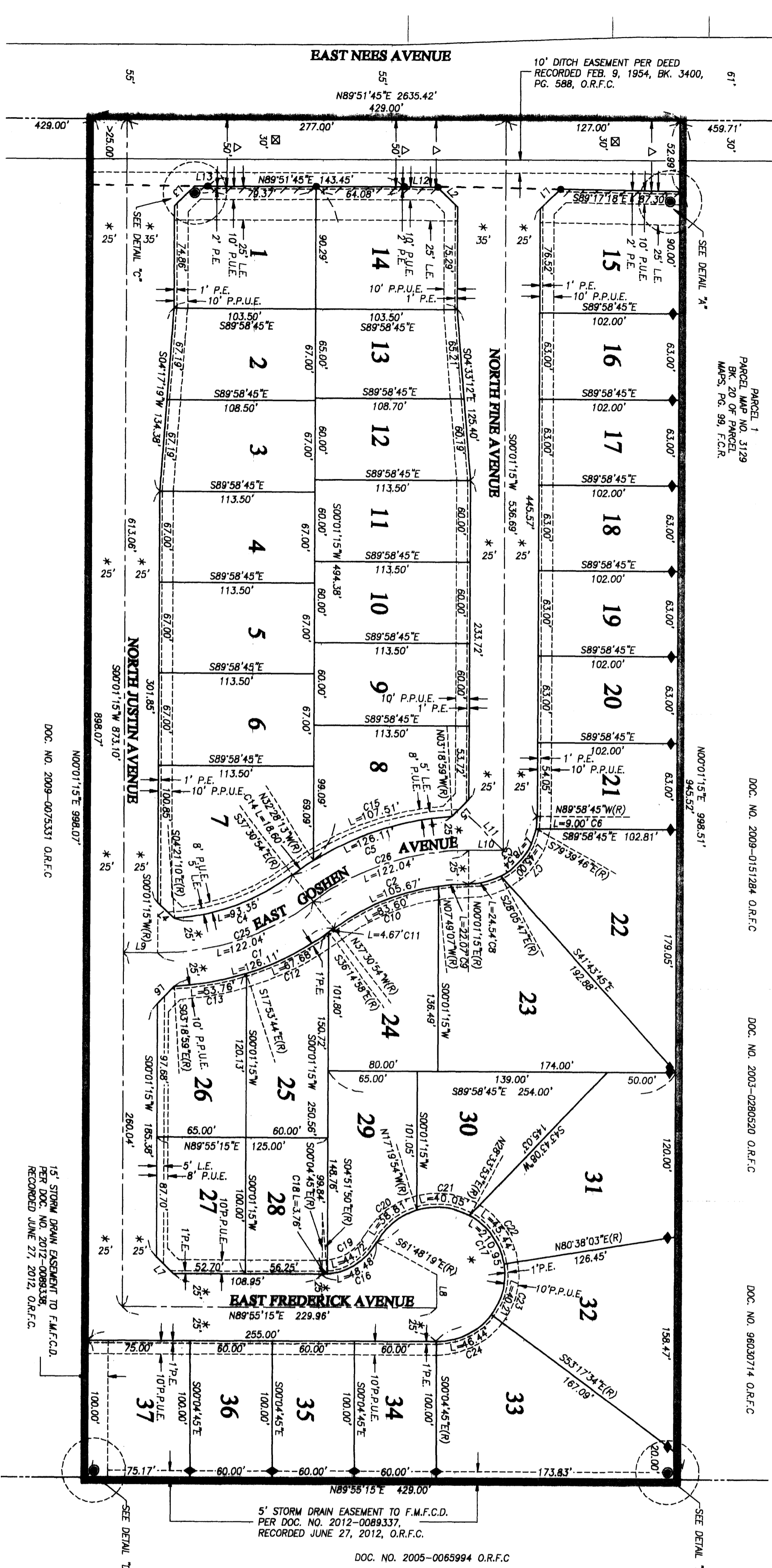
PARCEL 1
PARCEL MAP NO. 3129
BK. 20 OF PARCEL
MAPS, PG. 99, F.C.R.

DOC. NO. 2009-0151284 O.R.F.C.

DOC. NO. 2003-0280520 O.R.F.C.

DOC. NO. 96030714 O.R.F.C.

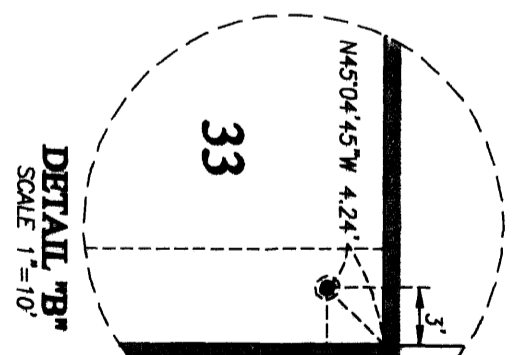
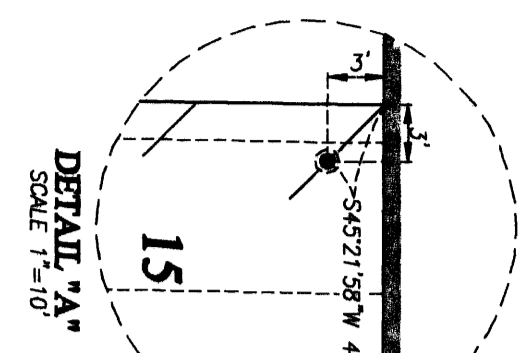
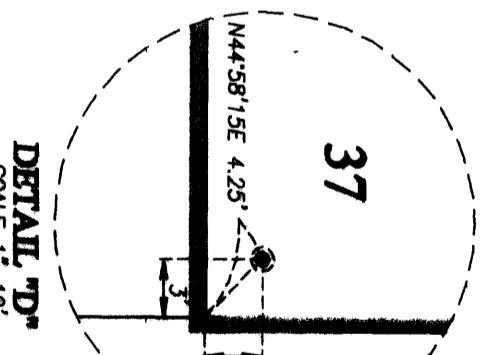
DOC. NO. 2005-0065994 O.R.F.C.



BASES OF BEARINGS
THE NORTH LINE OF THE NORTHEAST QUARTER OF SECTION 36, T.12S., R.20E., M.D.B.M. BEING N 89° 51' 45" E AS SHOWN ON THE MAP OF TRACT NO. 5067 RECORDED IN VOLUME 69 OF PLATS AT PAGES 79, 80 & 81, OF FRESNO COUNTY RECORDS.

NOTE
SET 3/4" BY 30" IRON PIPE TAGGED PLS 4714, 6 BELOW THE SURFACE AT ALL LOT CORNERS, BEGINNING AND ENDING OF CURVES AND ANGLE POINTS OF RIGHT-OF-WAY, UNLESS OTHERWISE NOTED

LINE	BEARING	DISTANCE
L1	N45°21'58"E	20.67
L2	S44°38'02"E	20.92
L3	N44°25'15"E	21.01
L4	S46°05'49"E	17.07
L5	N44°11'34"E	17.85
L6	N44°08'34"E	17.67
L7	S45°01'45"E	17.39
L8	N00°04'45"W	25.00
L9	S89°58'45"E	25.00
L10	N89°58'45"W	25.00
L11	S44°58'45"E	35.36
L12	S89°17'18"E	24.72
L13	N89°49'15"E	9.43



LEGEND
CORNER RECORD ON FILE WITH FRESNO COUNTY SURVEYOR
FRESNO METROPOLITAN FLOOD CONTROL DISTRICT
F.M.F.C.D.
F.C.R. FRESNO COUNTY RECORDS
L.E. LANDSCAPE EASEMENT NOW OFFERED FOR DEDICATION FOR PUBLIC USE
P.U.E. PUBLIC UTILITY EASEMENT NOW OFFERED FOR DEDICATION FOR PUBLIC USE
P.D.E. PRIVATE EASEMENT NOW OFFERED FOR DEDICATION FOR PUBLIC USE
P.P.U.E. PLANTING AND PUBLIC UTILITY EASEMENT NOW OFFERED FOR DEDICATION FOR PUBLIC USE
O.R.F.C. OFFICIAL RECORDS OF FRESNO COUNTY
RADIAL BEARING INDICATES AREA NOW OFFERED FOR DEDICATION FOR PUBLIC STREET EASEMENT PURPOSES PREVIOUSLY DEDICATED FOR PUBLIC STREET EASEMENT PURPOSES PER DOCUMENT NO. 2012-0037307, RECORDED ON MARCH 15, 2012, O.R.F.C.
EXISTING PERSPECTIVE RIGHT OF WAY BLUE BORDER INDICATES LIMITS OF THIS SUBDIVISION
RELINQUISHMENT OF DIRECT ACCESS RIGHTS BY THIS MAP
RECORD DATA PER MAP OF TRACT NO. 5067 RECORDED IN VOLUME 69 OF PLATS AT PAGE 79-81, F.C.R., OR CALCULATED THEREFROM
RECORD DATA PER PARCEL MAP NO. 3129 RECORDED IN BOOK 20 OF PARCEL MAPS, AT PAGE 99, F.C.R., OR CALCULATED THEREFROM
MONUMENT FOUND AND ACCEPTED AS DESCRIBED, UNLESS NOTED OTHERWISE
SET 3/4" X 30" IRON PIPE TAGGED PLS 4714, UP 4" IN 6" DIAMETER X 30" O.C. MOUMENT, DOWN 6" SET NAIL AND PLS 4714 TAG IN SIDEWALK
SET WITNESS CORNER 3/4" X 30" IRON PIPE TAGGED PLS 4714, DOWN 6" ON LOT LINE AS SHOWN AT 3.00' OFFSET FROM NEAREST LOT CORNER (DISTANCES SHOWN ARE TO TRUE CORNER)

CURVE	DELTA	RADIUS	LENGTH
C1	211.29	126.17	105.67
C2	37.32708	181.29	105.67
C3	90.00000	50.00	78.54
C4	35.0944	181.29	93.35
C5	37.1155	211.29	126.17
C6	101.859	50.00	45.00
C7	51.3359	50.00	24.54
C8	28.0722	181.29	22.07
C9	78.0722	181.29	83.60
C10	29.4147	181.29	4.67
C11	175.56	211.29	67.69
C12	182.114	211.29	53.76
C13	14.3445	211.29	18.80
C14	5.0241	211.29	107.51
C15	28.0914	211.29	107.51
C16	81.4334	45.00	48.48
C17	24.4334	50.00	210.95
C18	4.4705	45.00	3.76
C19	56.5629	45.00	44.72
C20	44.2825	50.00	38.81
C21	45.5347	50.00	40.05
C22	57.0410	50.00	45.44
C23	46.0427	50.00	48.21
C24	53.1249	50.00	46.44
C25	37.32708	186.29	122.04
C26	37.32708	186.29	122.04

574