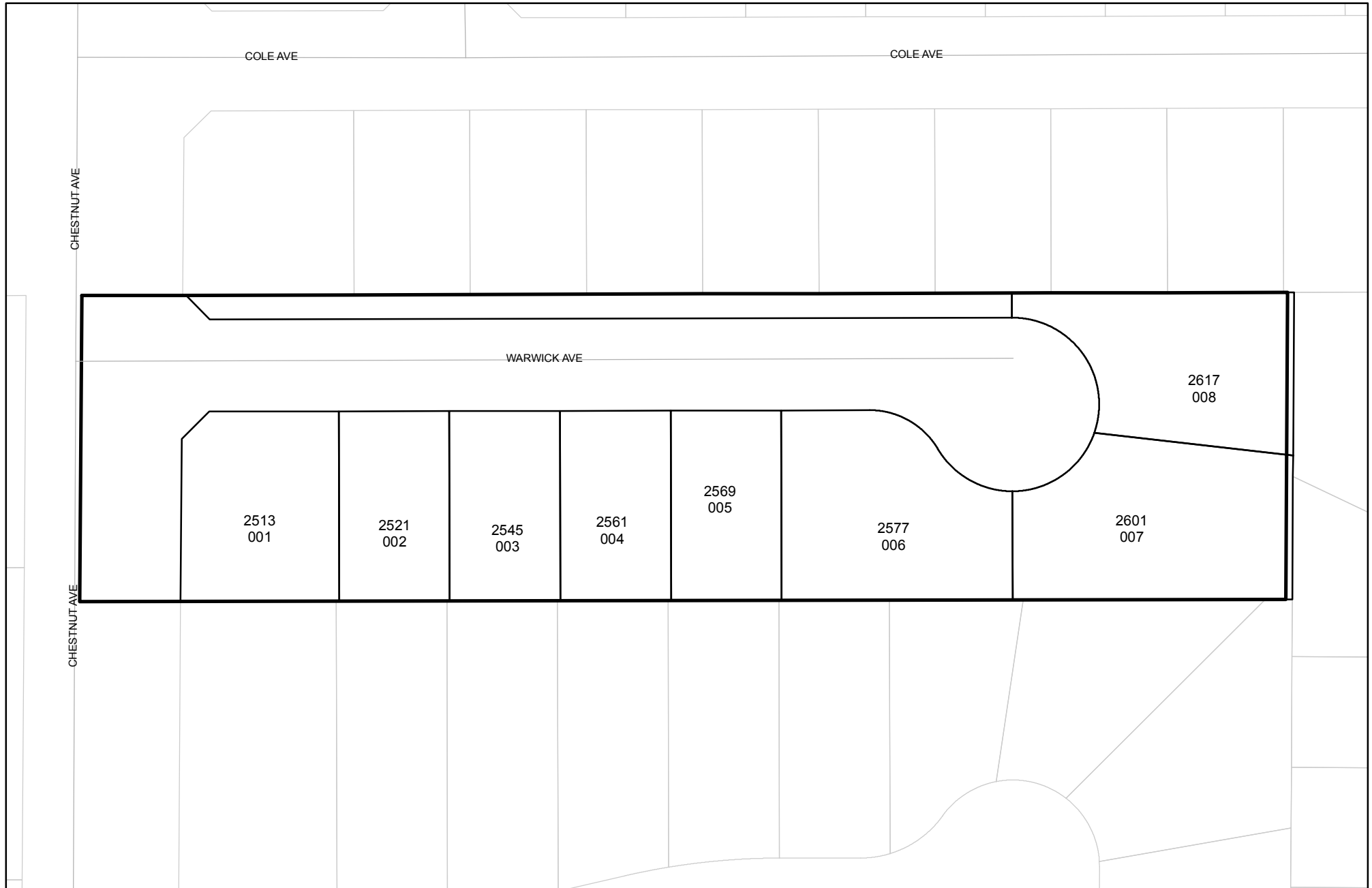




Prepared on Mon Oct 22 13:43:12 2018

Street Names, Addresses and (Lot Numbers) for T5997



FINAL MAP OF TRACT NO. 5997

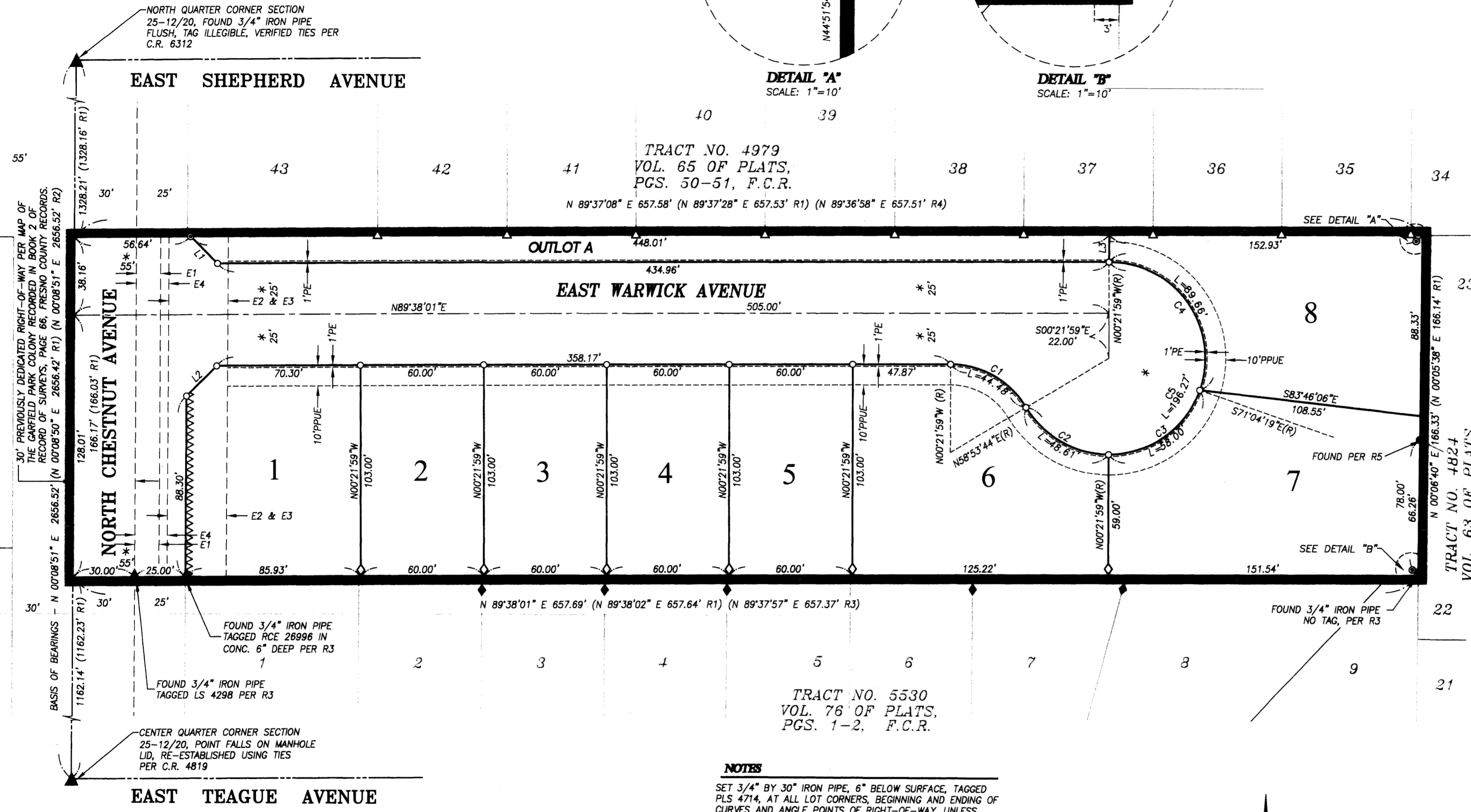
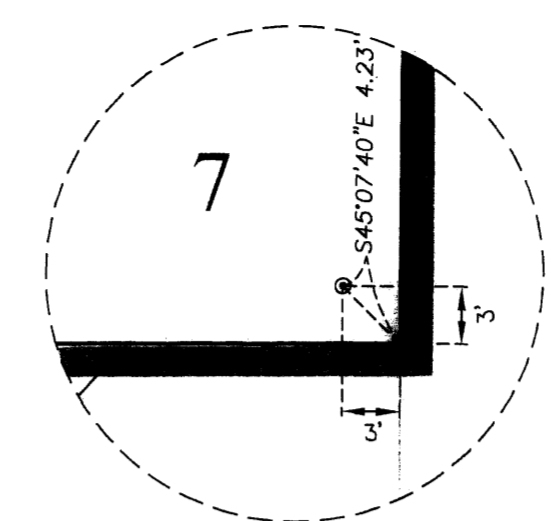
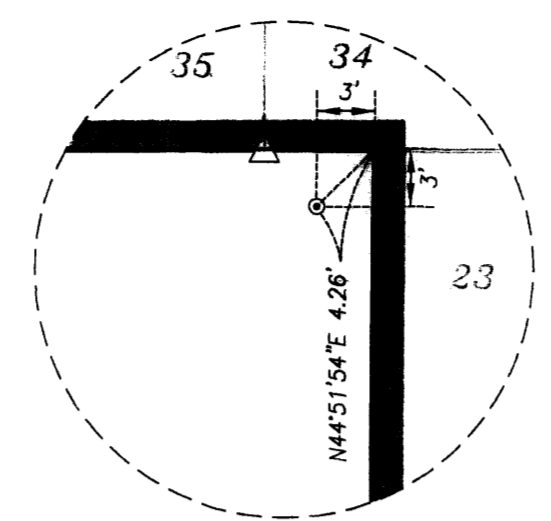
BEING A SUBDIVISION OF PARCEL 1 OF PARCEL MAP NO. 3273
RECORDED IN BOOK 27 OF PARCEL MAPS, PAGE 5, F.C.R.
IN THE CITY OF FRESNO, COUNTY OF FRESNO, STATE OF CALIFORNIA

SURVEYED AND PLATTED IN JUNE 2011
BY QUAD KNOPF INC.

CONSISTING OF 2 SHEETS
SHEET 2 OF 2

LINE TABLE		
LINE	BEARING	LENGTH
L1	S45°06'34"E	18.55
L2	N44°53'26"E	20.88
L3	N00°22'52"W	13.29

CURVE TABLE				
CURVE	DELTA	RADIUS	LENGTH	TANGENT
C1	59°15'43"	43.00	44.48	24.46
C2	59°15'43"	47.00	48.61	26.73
C3	70°42'20"	47.00	58.00	33.34
C4	109°17'40"	47.00	89.66	66.25
C5	239°15'43"	47.00	196.27	82.63



- LEGEND**
- ▲ MONUMENT FOUND AND ACCEPTED AS DESCRIBED
 - △ FOUND AND ACCEPTED 3/4" IRON PIPE TAGGED LS 5277, PER R4 UNLESS NOTED OTHERWISE.
 - FOUND AND ACCEPTED 3/4" IRON PIPE TAGGED RCE 19789, PER R2 UNLESS NOTED OTHERWISE.
 - ◆ FOUND AND ACCEPTED WITNESS CORNER, 3/4" IRON PIPE TAGGED R.C.E. 26996 ON LOT LINE AT 3.00' OFFSET FROM NEAREST LOT CORNER PER TRACT NO. 5530, PER R3
 - ◇ SET WITNESS CORNER 3/4" X 30" IRON PIPE, DOWN 6", TAGGED PLS 4714 ON LOT LINE AS SHOWN AT 3.00' OFFSET FROM NEAREST LOT CORNER. (DISTANCES SHOWN ARE TO TRUE CORNER) PER CITY OF FRESNO PUBLIC WORKS STANDARD P-38
 - ⊙ SET 3/4" X 30" IRON PIPE, UP 4" IN 6" DIAMETER X 30" P.C.C. MONUMENT, DOWN 6", TAGGED PLS 4714
 - SET NAIL AND PLS 4714 TAG IN SIDEWALK
 - BLUE BORDER INDICATES LIMITS OF SUBDIVISION
 - ▲▲▲▲ INDICATES RELINQUISHMENT OF DIRECT ACCESS RIGHTS BY THIS MAP
 - R1 RECORD DATA PER PARCEL MAP NO. 3273 RECORDED IN BOOK 27 OF PARCEL MAPS, AT PAGE 5, FRESNO COUNTY RECORDS, OR CALCULATED THEREFROM.
 - R2 RECORD DATA PER TRACT NO. 5553 RECORDED IN VOLUME 81 OF PLATS, AT PAGES 42-43, FRESNO COUNTY RECORDS, OR CALCULATED THEREFROM.
 - R3 RECORD DATA PER TRACT NO. 5530 RECORDED IN VOLUME 76 OF PLATS, AT PAGES 1-2, FRESNO COUNTY RECORDS, OR CALCULATED THEREFROM.
 - R4 RECORD DATA PER TRACT NO. 4979 RECORDED IN VOLUME 65 OF PLATS, AT PAGES 50-51, FRESNO COUNTY RECORDS, OR CALCULATED THEREFROM.
 - R5 RECORD DATA PER TRACT NO. 4824 RECORDED IN VOLUME 63 OF PLATS, AT PAGES 80-81, FRESNO COUNTY RECORDS, OR CALCULATED THEREFROM.
 - LE LANDSCAPE EASEMENT NOW OFFERED FOR DEDICATION FOR PUBLIC USE
 - O.R.F.C. OFFICIAL RECORDS OF FRESNO COUNTY
 - F.C.R. FRESNO COUNTY RECORDS
 - PE PEDESTRIAN EASEMENT NOW OFFERED FOR DEDICATION FOR PUBLIC USE
 - PUE PUBLIC UTILITY EASEMENT NOW OFFERED FOR DEDICATION FOR PUBLIC USE
 - (R) RADIAL BEARING
 - * INDICATES AREA NOW OFFERED FOR DEDICATION FOR PUBLIC STREET EASEMENT PURPOSES
 - PPUE PLANTING AND PUBLIC UTILITY EASEMENT NOW OFFERED FOR DEDICATION FOR PUBLIC USE
 - E1 12' EASEMENT FOR STREET PURPOSES GRANTED TO THE CITY OF FRESNO PER DOCUMENT RECORDED AS DOCUMENT NO. 2006-0150239, OFFICIAL RECORDS FRESNO COUNTY.
 - E2 29' PEDESTRIAN AND LANDSCAPE EASEMENT GRANTED TO THE CITY OF FRESNO PER DOCUMENT RECORDED AS DOCUMENT NO. 2007-0176556, OFFICIAL RECORDS FRESNO COUNTY.
 - E3 29' PUBLIC UTILITY EASEMENT GRANTED TO THE CITY OF FRESNO PER DOCUMENT RECORDED AS DOCUMENT NO. 2007-0176558, OFFICIAL RECORDS FRESNO COUNTY.
 - E4 16' PUBLIC STREET EASEMENT GRANTED TO THE CITY OF FRESNO PER DOCUMENT RECORDED AS DOCUMENT NO. 2007-0176555, OFFICIAL RECORDS FRESNO COUNTY.

TRACT NO. 4979
VOL. 65 OF PLATS,
PGS. 50-51, F.C.R.
N 89°37'08" E 657.58' (N 89°37'28" E 657.53' R1) (N 89°36'58" E 657.51' R4)

TRACT NO. 5530
VOL. 76 OF PLATS,
PGS. 1-2, F.C.R.

NOTES
SET 3/4" BY 30" IRON PIPE, 6" BELOW SURFACE, TAGGED PLS 4714, AT ALL LOT CORNERS, BEGINNING AND ENDING OF CURVES AND ANGLE POINTS OF RIGHT-OF-WAY, UNLESS OTHERWISE NOTED.

BASE OF BEARINGS
THE WEST LINE OF THE NORTHEAST QUARTER OF SECTION 25, TOWNSHIP 12 SOUTH, RANGE 20 EAST, MOUNT DIABLO BASE AND MERIDIAN, SHOWN TO BEAR NORTH 00°08'51" EAST, PER TRACT NO. 5553 RECORDED IN VOL. 81 OF PLATS AT PAGES 42 & 43, FRESNO COUNTY RECORDS.

OUTLOT DESIGNATION
OUTLOT "A" IS DEDICATED IN FEE TO THE CITY OF FRESNO FOR OPEN SPACE AND LANDSCAPE PURPOSES SUBJECT TO CITY ACCEPTANCE OF DEVELOPER INSTALLED REQUIRED IMPROVEMENTS.
OUTLOT "A" PUBLIC UTILITY EASEMENT NOW OFFERED FOR DEDICATION FOR PUBLIC USE.

