



Prepared on Mon Oct 22 13:43:52 2018

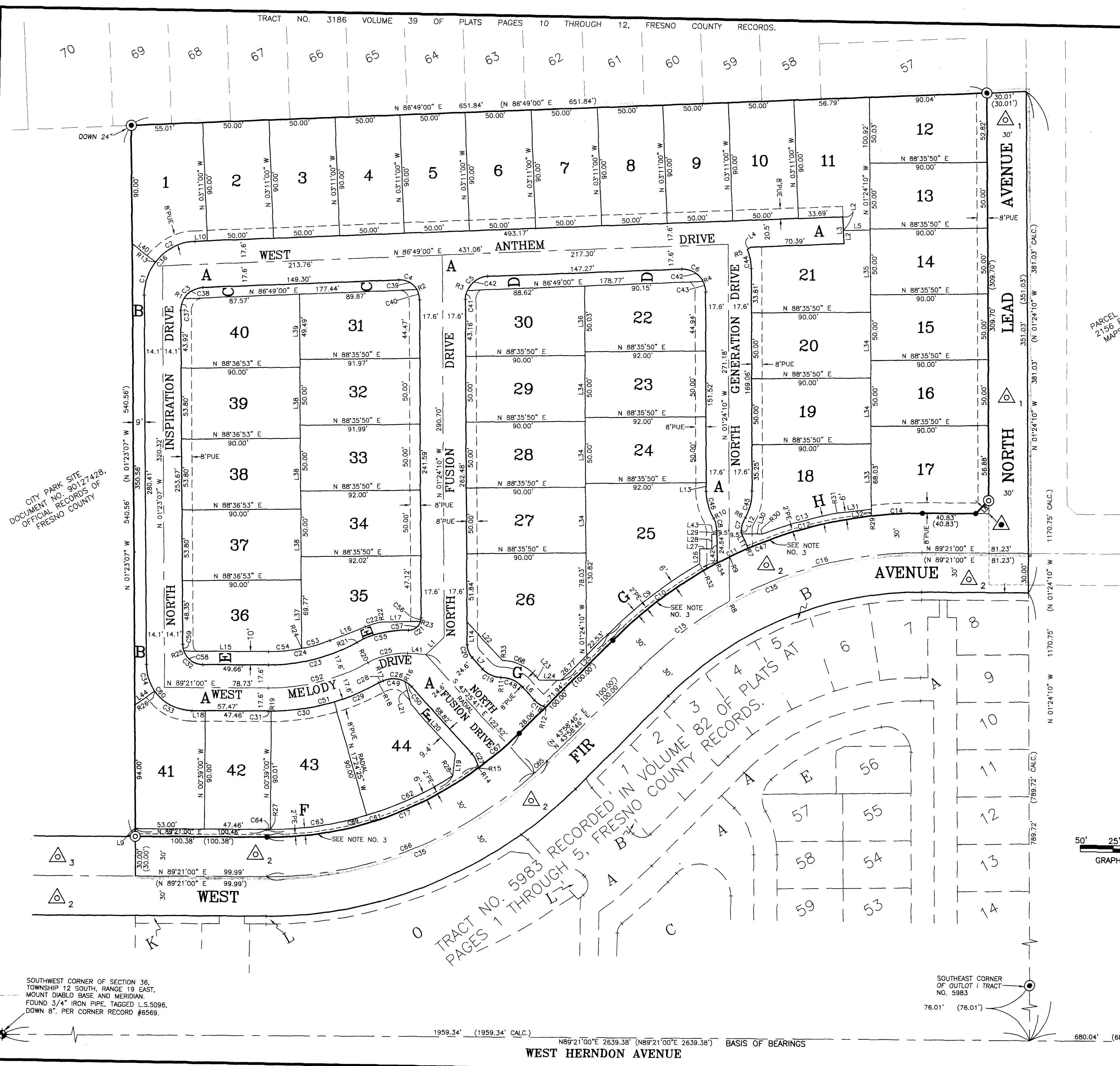
Street Names, Addresses and (Lot Numbers) for T5995



TRACT NO. 5995

PHASE 2 OF VESTING TENTATIVE MAP NO. 5983
IN THE CITY OF FRESNO,
FRESNO COUNTY, CALIFORNIA
SURVEYED AND PLATTED IN FEBRUARY, 2011
BY HARBOUR AND ASSOCIATES
CONSISTING OF 3 SHEETS
SHEET 2 OF 3

TRACT NO. 3186 VOLUME 39 OF PLATS PAGES 10 THROUGH 12, FRESNO COUNTY RECORDS.



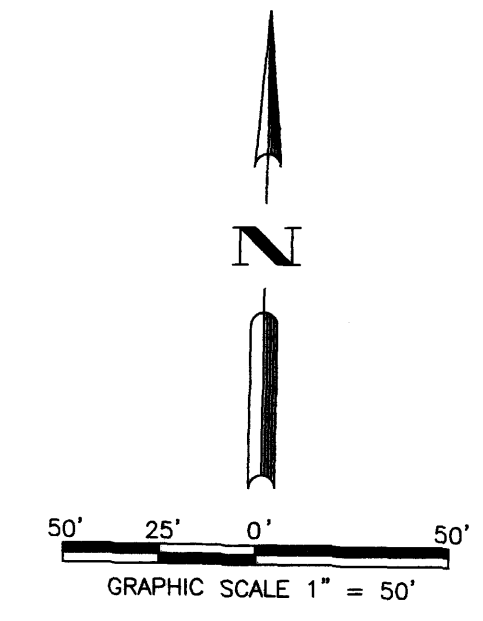
PARCEL B PARCEL MAP NO. 2156 BOOK 13 OF PARCEL MAPS, PAGE 80, FRESNO COUNTY RECORDS.

CITY PARK SITE
DOCUMENT NO. 9012742B,
OFFICIAL RECORDS OF
FRESNO COUNTY

- LEGEND:**
- A LETTER DESIGNATION FOR OUTLOT
 - INDICATES RIGHT-OF-WAY EASEMENT FOR PUBLIC STREET PURPOSES PER DEED OF EASEMENT RECORDED MAY 13, 1994 AS DOCUMENT NO. 94081846, O.R.F.C.
 - INDICATES RIGHT-OF-WAY EASEMENT FOR PUBLIC STREET PURPOSES PER FINAL ORDER OF CONDEMNATION RECORDED MAY 28, 1998 AS DOCUMENT NO. 98073787, O.R.F.C.
 - INDICATES RIGHT-OF-WAY EASEMENT FOR PUBLIC STREET PURPOSES PER RESOLUTION NO. 97-184 RECORDED SEPTEMBER 5, 1997 AS DOCUMENT NO. 97116135, O.R.F.C.
 - INDICATES STREET EASEMENT NOW OFFERED FOR DEDICATION FOR PUBLIC USE.
 - THE BLUE BORDER INDICATES THE LIMITS OF THIS SUBDIVISION.
 - INDICATES RECORD DATA AS SHOWN ON OR CALCULATED FROM TRACT NO. 5983 RECORDED IN VOLUME 82 OF PLATS AT PAGES 1 THROUGH 5, FRESNO COUNTY RECORDS.
 - FOUND 3/4" IRON PIPE, UP 4" IN 6" PCC MONUMENT, DOWN 6", TAGGED LS 5277, UNLESS OTHERWISE NOTED.
 - FOUND 3/4" IRON PIPE, DOWN 6", TAGGED LS 5277.
 - FOUND 3/4" IRON PIPE, DOWN 6", TAGGED LS 5277. RESET WITH 3/4" X 30" IRON PIPE, UP 4" IN 6" DIAMETER X 30" PCC MONUMENT, DOWN 6", TAGGED LS 5277.
 - PUE PUBLIC UTILITY EASEMENT NOW OFFERED FOR DEDICATION FOR PUBLIC USE.
 - PE PEDESTRIAN EASEMENT NOW OFFERED FOR DEDICATION FOR PUBLIC USE.
 - OUTLOT A FOR PRIVATE ROAD
 - OUTLOT A PUBLIC UTILITY EASEMENT PURPOSES NOW OFFERED FOR DEDICATION FOR PUBLIC USE.
 - OUTLOTS B, C, D, E, F, G, AND H FOR PRIVATE LANDSCAPING AND PRIVATE WALKWAY PURPOSES.
- SEE SHEET 3 OF 3 FOR ALL LINE, CURVE AND RADIAL DATA.

BASIS OF BEARINGS:
THE SOUTH LINE OF THE SOUTHWEST QUARTER OF SECTION 36, TOWNSHIP 12 SOUTH, RANGE 19 EAST, MOUNT DIABLO BASE AND MERIDIAN, WAS TAKEN TO BE NORTH 89°21'00" EAST AS SHOWN ON TRACT NO. 5983 RECORDED IN VOLUME 82 OF PLATS AT PAGES 1 THROUGH 5, FRESNO COUNTY RECORDS.

- NOTES:**
- 3/4" X 30" IRON PIPE, DOWN 0.5', TAGGED LS 5277 SET AT ALL LOT CORNERS, BLOCK CORNERS AND BEGINNING AND ENDING OF ALL CURVES.
 - DISTANCES NOT MONUMENTED ARE CALCULATED.
 - DIRECT ACCESS RIGHTS ARE RELINQUISHED ALONG THE SOUTHERLY LINES OF OUTLOTS F, G AND H BEING THE NORTHERLY RIGHT-OF-WAY LINE OF WEST FIR AVENUE. SYMBOL IS NOT SHOWN ON MAP FOR CLARITY.



SOUTHWEST CORNER OF SECTION 36, TOWNSHIP 12 SOUTH, RANGE 19 EAST, MOUNT DIABLO BASE AND MERIDIAN. FOUND 3/4" IRON PIPE, TAGGED LS 5096, DOWN 8". PER CORNER RECORD #6569.

SOUTHEAST CORNER OF OUTLOT 1 TRACT NO. 5983

SOUTH QUARTER CORNER OF SECTION 36, TOWNSHIP 12 SOUTH, RANGE 19 EAST, MOUNT DIABLO BASE AND MERIDIAN. FOUND FRESNO COUNTY BRASS CAP MONUMENT. PER CORNER RECORD #6315.

Harbour & Associates
Civil Engineers
389 Clovis Avenue, Suite 300 • Clovis, California 93612
(559) 325-7676 • Fax (559) 325-7699

8-05-2011
7-19-2011
6-15-2011
5-31-2011
5-13-2011

1959.34' (1959.34' CALC.)
N89°21'00"E 2639.38" (N89°21'00"E 2639.38")
WEST HERNDON AVENUE

680.04' (680.04' CALC.)