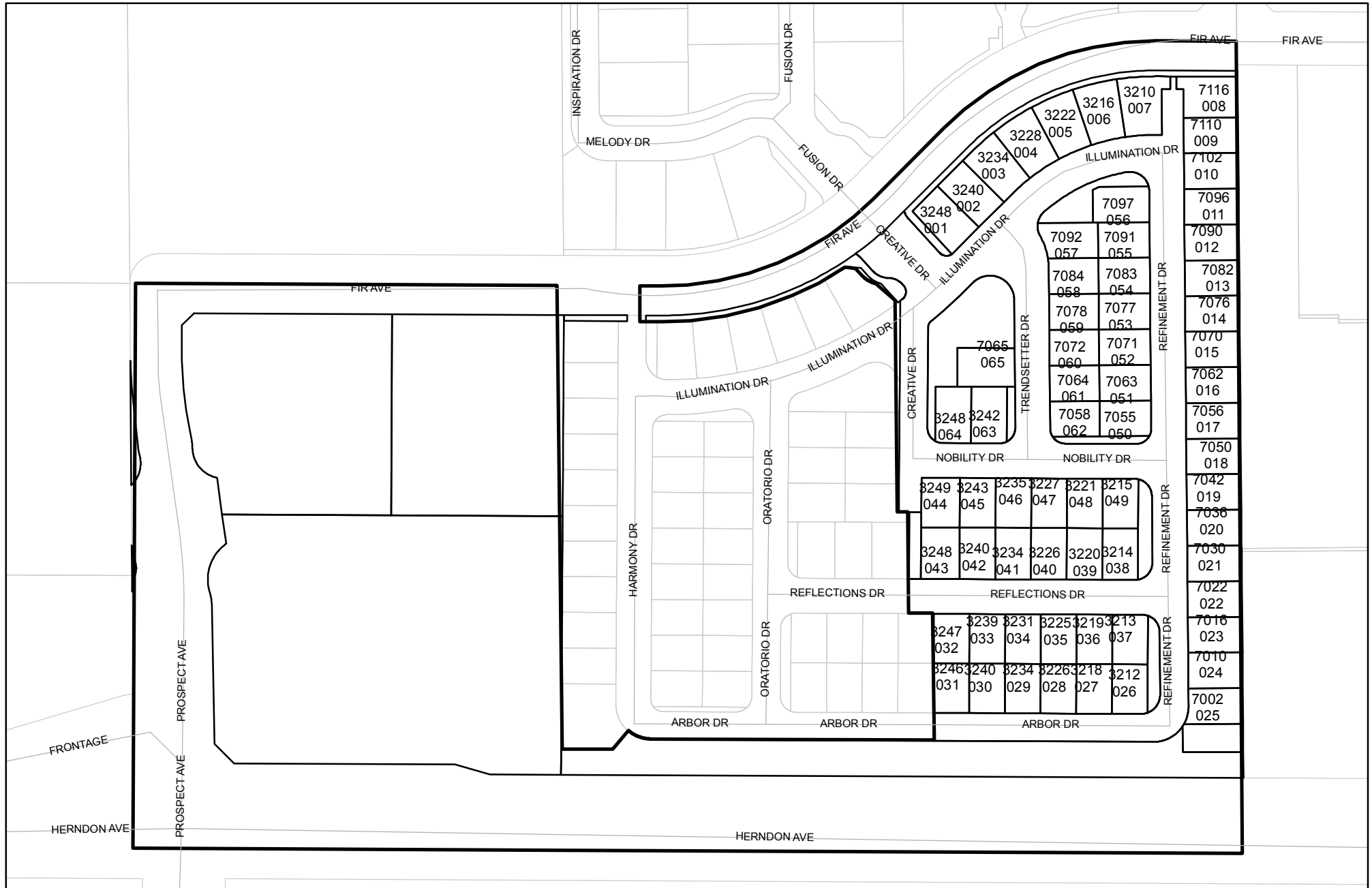




Prepared on Tue Apr 02 13:28:53 2013

Street Names, Addresses and (Lot Numbers) for T5983



TRACT NO. 5983

PHASE 1 OF VESTING TENTATIVE MAP NO. 5983
IN THE CITY OF FRESNO,
FRESNO COUNTY, CALIFORNIA
SURVEYED AND PLATTED IN JANUARY, 2011
BY HARBOUR AND ASSOCIATES
CONSISTING OF 5 SHEETS
SHEET 2 OF 5

LINE TABLE - SHEET 2 ONLY

| LINE | BEARING | DISTANCE |
|------|---------------|----------|
| L1 | N01°23'07"W | 76.01' |
| (L1) | (S01°22'20"E) | (76.01') |
| L2 | N01°24'10"W | 57.49' |
| (L2) | (N00°59'30"W) | (57.18') |
| L3 | N89°21'00"E | 99.99' |
| L4 | N89°21'00"E | 81.32' |
| L5 | N43°56'32"E | 100.38' |
| L6 | N89°21'00"E | 99.54' |
| L7 | N43°56'32"E | 99.54' |
| L8 | N89°21'00"E | 50.92' |
| L9 | N88°37'19"E | 72.00' |
| L10 | N43°59'09"E | 20.65' |

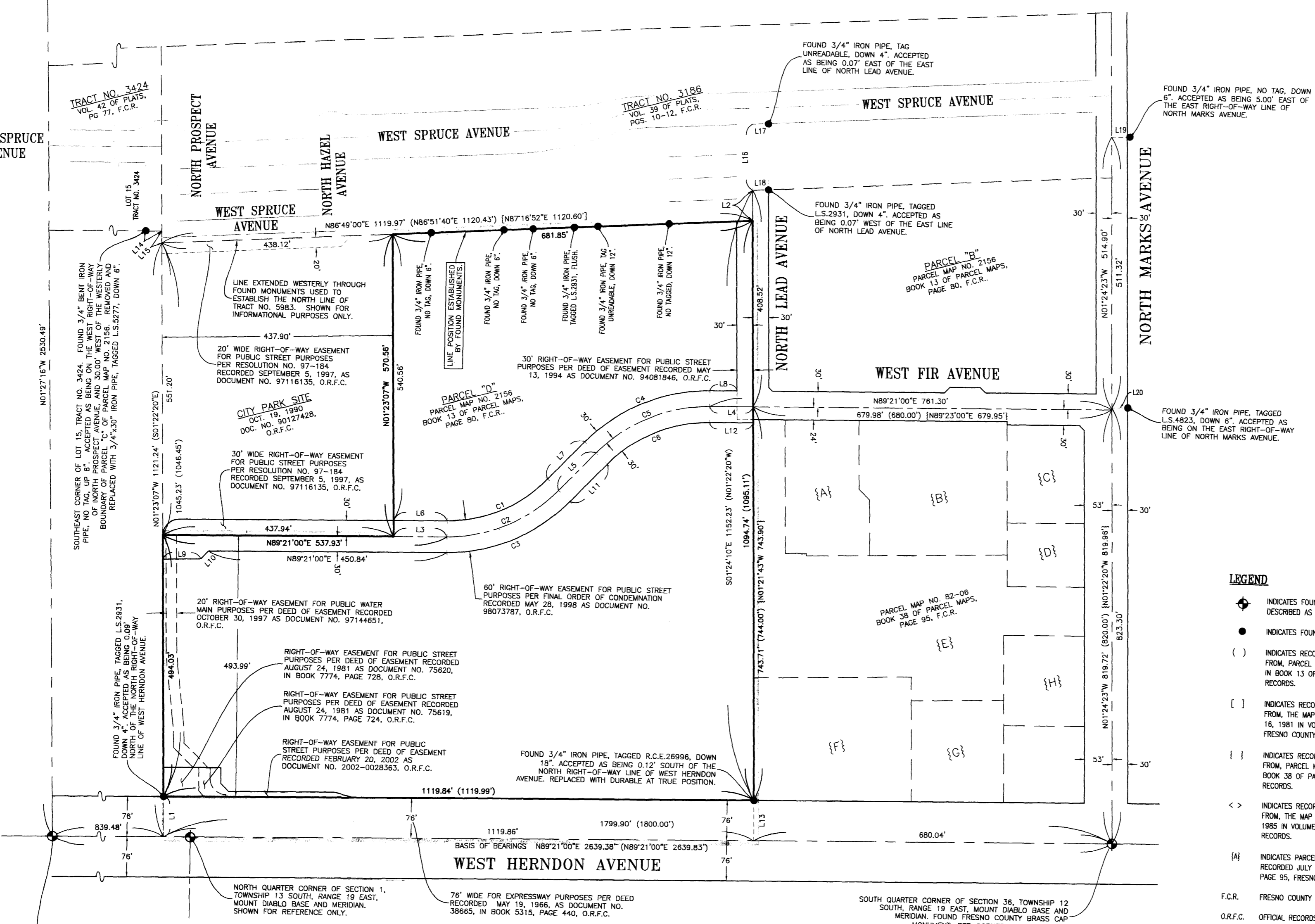
LINE TABLE - SHEET 2 ONLY

| LINE | BEARING | DISTANCE |
|-------|---------------|----------|
| L11 | N43°56'32"E | 99.54' |
| L12 | N89°21'00"E | 81.71' |
| L13 | N01°24'10"W | 76.01' |
| L14 | N89°21'18"E | 30.00' |
| <L14> | <N89°47'17"E> | <30.00'> |
| L15 | S01°23'07"E | 23.03' |
| <L15> | <S0°57'08"E> | <22.54'> |
| L16 | N01°24'10"W | 125.06' |
| L17 | N88°51'17"E | 30.01' |
| L18 | N88°51'17"E | 30.01' |
| L19 | N88°35'37"E | 35.00' |
| L20 | N88°35'37"E | 29.99' |

CURVE TABLE - SHEET 2 ONLY

| CURVE | RADIUS | DELTA ANGLE | ARC LENGTH |
|-------|---------|-------------|------------|
| C1 | 270.00' | 45°24'28" | 213.98' |
| C2 | 300.00' | 45°24'28" | 237.75' |
| C3 | 330.00' | 45°24'28" | 261.53' |
| C4 | 330.00' | 45°24'28" | 261.53' |
| C5 | 300.00' | 45°24'28" | 237.75' |
| C6 | 270.00' | 45°24'28" | 213.98' |

WEST QUARTER CORNER OF SECTION 36, TOWNSHIP 12 SOUTH, RANGE 19 EAST, MOUNT DIABLO BASE AND MERIDIAN. FOUND 3" FRESNO COUNTY BRASS CAP IN WELL. PER TIES ON FILE WITH FRESNO COUNTY SURVEYOR #0912.

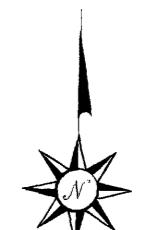


LEGEND

- ◆ INDICATES FOUND SECTION CORNER OR QUARTER CORNER, DESCRIBED AS NOTED.
- INDICATES FOUND MONUMENT, DESCRIBED AS NOTED.
- () INDICATES RECORD DATA AS SHOWN ON, OR CALCULATED FROM, PARCEL MAP NO. 2156 RECORDED AUGUST 22, 1974 IN BOOK 13 OF PARCEL MAPS AT PAGE 80, FRESNO COUNTY RECORDS.
- [] INDICATES RECORD DATA AS SHOWN ON, OR CALCULATED FROM, THE MAP OF TRACT NO. 3186 RECORDED NOVEMBER 16, 1981 IN VOLUME 38 OF PLATS AT PAGES 10-12, FRESNO COUNTY RECORDS.
- { } INDICATES RECORD DATA AS SHOWN ON, OR CALCULATED FROM, PARCEL MAP NO. 82-06 RECORDED JULY 2, 1982 IN BOOK 38 OF PARCEL MAPS AT PAGE 95, FRESNO COUNTY RECORDS.
- < > INDICATES RECORD DATA AS SHOWN ON, OR CALCULATED FROM, THE MAP OF TRACT NO. 3424 RECORDED APRIL 23, 1985 IN VOLUME 42 OF PLATS AT PAGE 77, FRESNO COUNTY RECORDS.
- {A} INDICATES PARCEL AS SHOWN ON PARCEL MAP NO. 82-06 RECORDED JULY 2, 1982 IN BOOK 38 OF PARCEL MAPS AT PAGE 95, FRESNO COUNTY RECORDS.
- F.C.R. FRESNO COUNTY RECORDS
- O.R.F.C. OFFICIAL RECORDS OF FRESNO COUNTY
- BLUE BORDER INDICATES LIMITS OF THIS SUBDIVISION

BASIS OF BEARINGS

THE SOUTH LINE OF THE SOUTHWEST QUARTER OF SECTION 36, TOWNSHIP 12 SOUTH, RANGE 19 EAST, MOUNT DIABLO BASE AND MERIDIAN, WAS TAKEN TO BE NORTH 89°21'00" EAST AS SHOWN ON PARCEL MAP NO. 2156 RECORDED AUGUST 22, 1974 IN BOOK 13 OF PARCEL MAPS AT PAGE 80, FRESNO COUNTY RECORDS.



SCALE: 1" = 150'



SOUTHWEST CORNER OF SECTION 36, TOWNSHIP 12 SOUTH, RANGE 19 EAST, MOUNT DIABLO BASE AND MERIDIAN. FOUND 3/4" IRON PIPE, TAGGED L.S.5096, DOWN 8". PER CORNER RECORD #6569.

NORTH QUARTER CORNER OF SECTION 1, TOWNSHIP 13 SOUTH, RANGE 19 EAST, MOUNT DIABLO BASE AND MERIDIAN. SHOWN FOR REFERENCE ONLY.

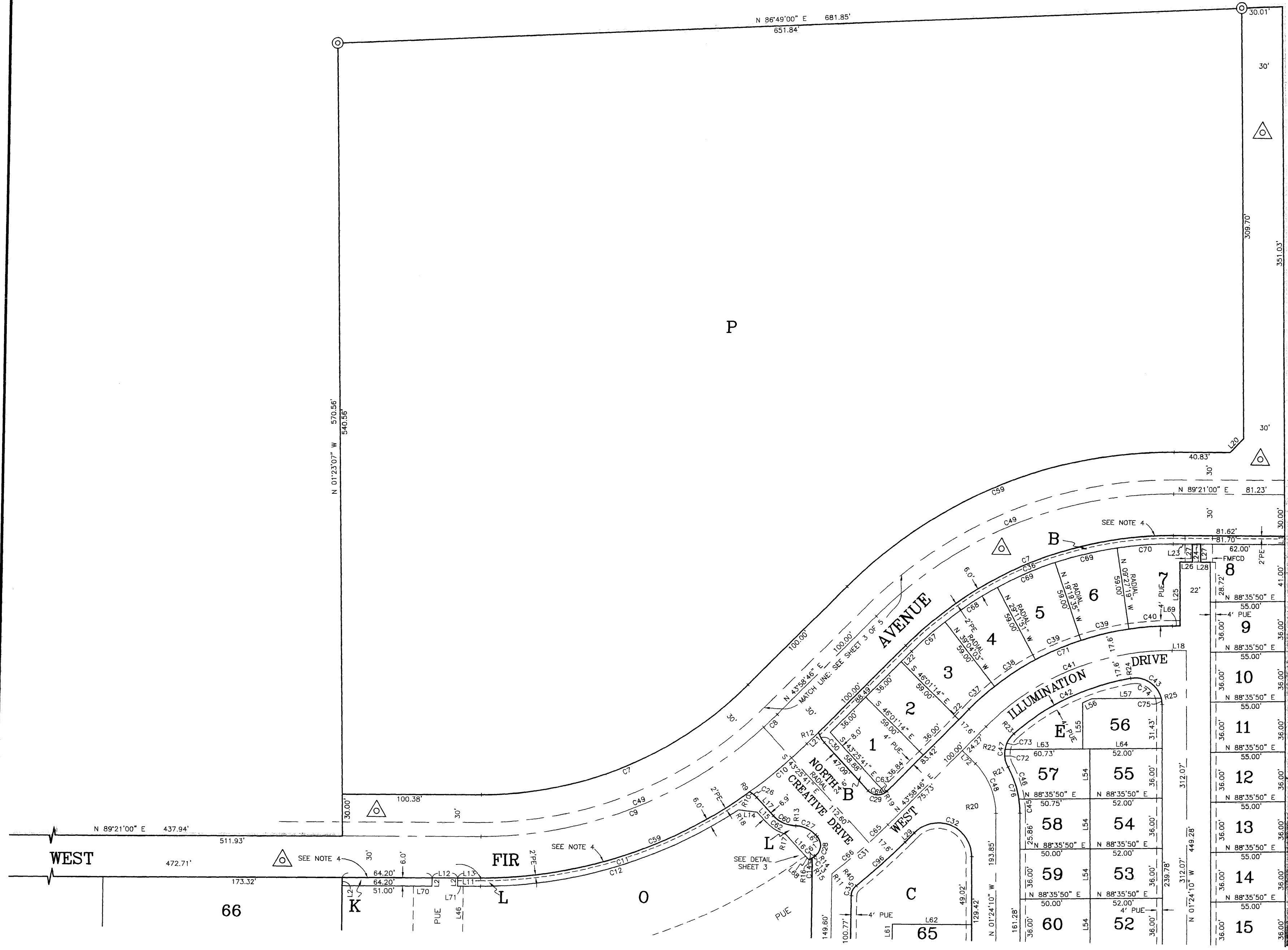
SOUTH QUARTER CORNER OF SECTION 36, TOWNSHIP 12 SOUTH, RANGE 19 EAST, MOUNT DIABLO BASE AND MERIDIAN. FOUND FRESNO COUNTY BRASS CAP MONUMENT. PER CORNER RECORD #6315.

10-045
Harbour & Associates - Tract No. 5983

Harbour & Associates
Civil Engineers
388 CLOVIS AVENUE # 300 • Clovis, California 93612
(509) 325-7676 • Fax: (509) 325-7666 • e-mail: ha_ca@msn.com

TRACT NO. 5983

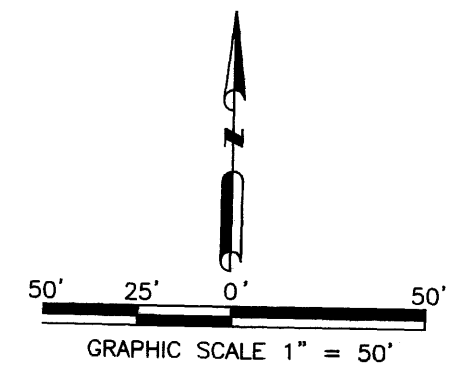
PHASE 1 OF VESTING TENTATIVE MAP NO. 5983
 IN THE CITY OF FRESNO,
 FRESNO COUNTY, CALIFORNIA
 SURVEYED AND PLATTED IN JANUARY, 2011
 BY HARBOUR AND ASSOCIATES
 CONSISTING OF 5 SHEETS
 SHEET 4 OF 5



- LEGEND:**
- A LETTER DESIGNATION FOR OUTLOT
 - INDICATES RELINQUISHMENT OF DIRECT ACCESS RIGHTS.
 - △ INDICATES STREET EASEMENT PREVIOUSLY DEDICATED FOR PUBLIC USE.
 - △ INDICATES STREET EASEMENT NOW OFFERED FOR DEDICATION FOR PUBLIC USE.
 - THE BLUE BORDER INDICATED THE LIMITS OF THIS SUBDIVISION.
 - ⊙ SET 3/4" X 30" IRON PIPE, UP 4" IN 6" DIAMETER X 30" PCC MONUMENT, DOWN 6", TAGGED LS 5277 UNLESS OTHERWISE NOTED.
 - PUE PUBLIC UTILITY EASEMENT NOW OFFERED FOR DEDICATION FOR PUBLIC USE.
 - PE PEDESTRIAN EASEMENT NOW OFFERED FOR DEDICATION FOR PUBLIC USE.
 - BPE BIKEWAY AND PEDESTRIAN EASEMENT NOW OFFERED FOR DEDICATION FOR PUBLIC USE.
 - FMFCD INDICATES AREA GRANTED TO FRESNO METROPOLITAN FLOOD CONTROL DISTRICT FOR STORM DRAIN EASEMENT PURPOSES PER DOCUMENT NO. 2011-00930.53 RECORDED July 15, 2011, OFFICIAL RECORDS OF FRESNO COUNTY.
 - OUTLOT A FOR PRIVATE ROAD
 - OUTLOT A FOR PUBLIC UTILITY EASEMENT NOW OFFERED FOR DEDICATION FOR PUBLIC USE.
 - OUTLOTS B, D, E, F, G, H, I, J, K AND L FOR PRIVATE LANDSCAPING AND PRIVATE WALKWAY PURPOSES
 - OUTLOT C FOR PRIVATE LANDSCAPING, PRIVATE WALKWAY, PRIVATE PARKING AND RECREATION PURPOSES.
 - OUTLOTS M, N, O, AND P FOR FUTURE DEVELOPMENT.

SEE SHEET 5 OF 5 FOR ALL LINE, CURVE AND RADIAL DATA FOR SHEETS 3 AND 4.

- NOTES:**
1. 3/4" X 30" IRON PIPE, DOWN 0.5', TAGGED LS 5277 SET AT ALL LOT CORNERS, BLOCK CORNERS AND BEGINNING AND ENDING OF ALL CURVES.
 2. DISTANCES NOT MONUMENTED ARE CALCULATED.
 3. THOSE PORTIONS OF EASEMENTS FOR PUBLIC STREET PURPOSES DEDICATED PER DEED OF EASEMENT RECORDED AUGUST 24, 1981 AS DOCUMENT NO. 75619, IN BOOK 7774, PAGE 724, O.R.F.C. AND DEED OF EASEMENT RECORDED FEBRUARY 20, 2002 AS DOCUMENT NO. 2002-0028363, O.R.F.C. WHICH ARE NOT DELINEATED ON SHEET 3 OF THIS MAP ARE DEEMED ABANDONED PURSUANT TO SECTION 66499.20 1/2 OF THE SUBDIVISION MAP ACT.
 4. DIRECT ACCESS RIGHTS ARE RELINQUISHED ALONG THE NORTHERLY LINES OF OUTLOTS B, K AND L. SYMBOL IS NOT SHOWN ON MAP FOR CLARITY.



Harbour & Associates
 Civil Engineers
 389 Clovis Avenue, Suite 300 • Clovis, California 93612
 (559) 325-7676 • Fax (559) 325-7699

5-31-2011
 5-23-2011
 5-09-2011

SEE SHEET 3 OF 5