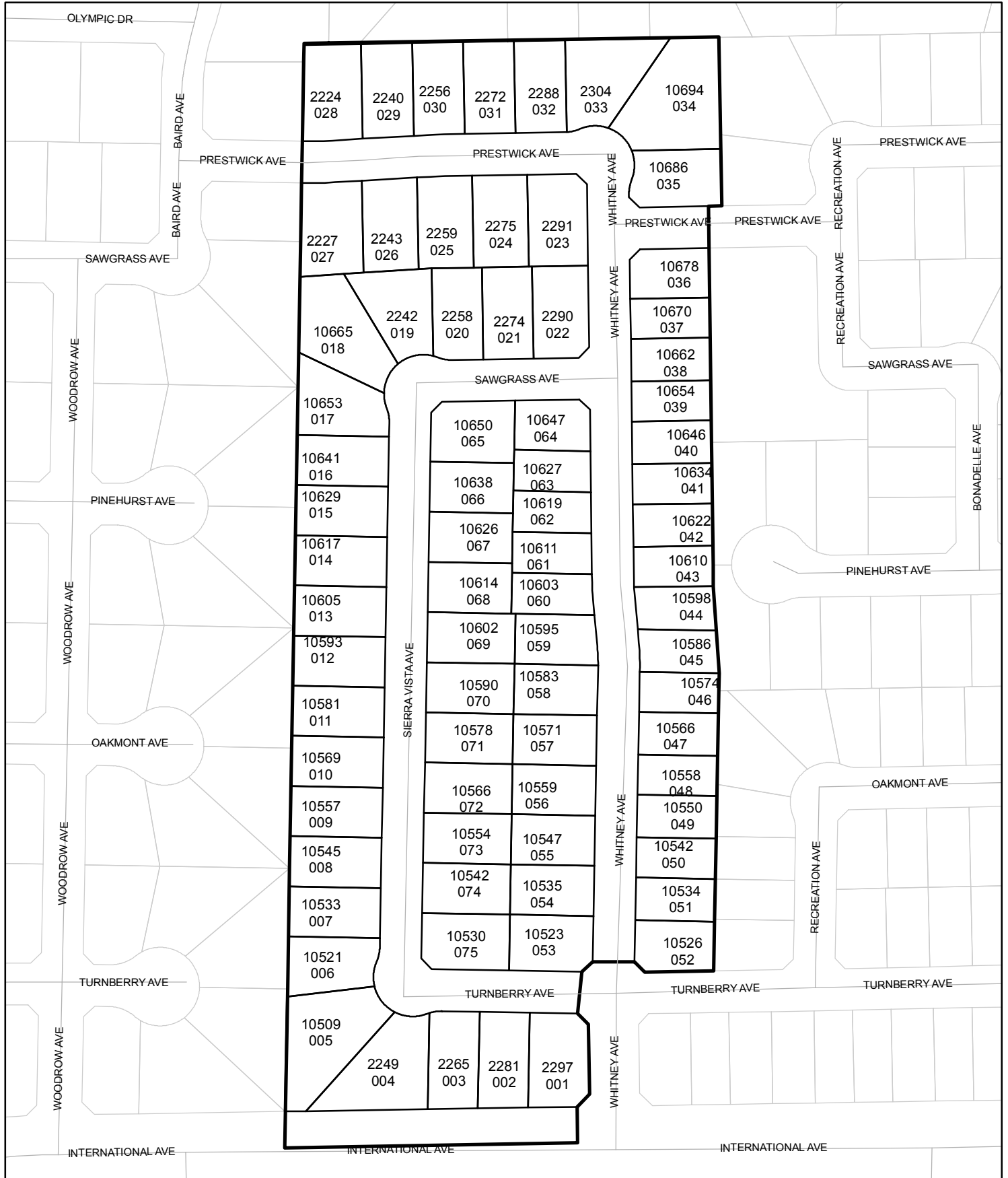




Street Names, Addresses and (Lot Numbers) for T5977

Prepared on Tue Apr 02 13:29:13 2013



TRACT NO. 5977

PHASE II OF VESTING TENTATIVE MAP NO. 5966

A PLANNED DEVELOPMENT

BEING A SUBDIVISION OF THE SOUTHEAST QUARTER OF THE NORTHWEST QUARTER OF SECTION 13, TOWNSHIP 12 SOUTH, RANGE 20 EAST, MOUNT DIABLO BASE AND MERIDIAN.

IN THE CITY OF FRESNO, COUNTY OF FRESNO, STATE OF CALIFORNIA SURVEYED AND PLATTED IN DECEMBER 2010, BY GARY G. GIANNETTA

**CONSISTING OF TWO SHEETS
SHEET TWO OF TWO SHEETS**

BASIS OF BEARINGS

THE SOUTH LINE OF THE SOUTHEAST QUARTER OF THE NORTHWEST QUARTER OF SECTION 13, TOWNSHIP 12 SOUTH, RANGE 20 EAST, MOUNT DIABLO BASE AND MERIDIAN, TAKEN AS BEARING NORTH 88°35'09" EAST AS PER TRACT NO. 4903 RECORDED IN VOLUME 66 OF PLATS, AT PAGES 38 AND 39, INCLUSIVE, FRESNO COUNTY RECORDS.

NOTE:

- SET 3/4" x 30" IRON PIPE, 6" DOWN, TAGGED RCE 26996 AT ALL LOT CORNERS AND ANGLE POINTS
- 3/4" IRON PIPE, 30" LONG, 6" DOWN TAGGED RCE 26996 AS BEING AN ANGLE POINT ON THE BOUNDARY OF TRACT NO. 5966, OR AS NOTED

LEGEND:

- MONUMENT FOUND AND ACCEPTED AS NOTED
- SET 3/4" IRON PIPE, 30" LONG, 6" DOWN BELOW GROUND, TAGGED R.C.E. 26996
- ◊ SET 3/4" IRON PIPE, 30" LONG, 6" BELOW GROUND, TAGGED RCE 26996 AS SHOWN AT 3.00' FROM NEAREST LOT CORNERS. (DISTANCES SHOWN ARE TO TRUE LOT CORNER)
- ▲ NOW OFFERED FOR DEDICATION FOR PUBLIC STREET EASEMENT PURPOSES
- ▲▲▲▲ INDICATES RELINQUISHMENT OF DIRECT ACCESS RIGHTS
- () RECORD DATA AS PER TRACT NO. 4903, RECORDED IN VOLUME 66 OF PLATS, AT PAGES 38 AND 39, F.C.R.
- [] RECORD DATA AS PER TRACT NO. 4788, RECORDED IN VOLUME 60 OF PLATS, AT PAGES 52 THROUGH 56, F.C.R.
- { } RECORD DATA AS PER TRACT NO. 5966, RECORDED IN VOLUME 81 OF PLATS, AT PAGES 69 THROUGH 70, F.C.R.
- △ PREVIOUSLY DEEDED FOR PUBLIC STREET PURPOSES PER DEED DOC. NO. 2010-0087916 RECORDED JULY 9, 2010 F.C.R.
- △ PREVIOUSLY DEEDED FOR PUBLIC STREET PURPOSES PER DEED DOC. NO. 95061335 RECORDED MAY 22, 1995 F.C.R.
- (R) DENOTES RADIAL BEARING TO CURVE
- CALC CALCULATED FROM RECORD DATA
- F.C.R. FRESNO COUNTY RECORDS
- PE PEDESTRIAN EASEMENT NOW OFFERED FOR DEDICATION FOR PUBLIC USE
- PPUE PLANTING AND PUBLIC UTILITY EASEMENT NOW OFFERED FOR DEDICATION FOR PUBLIC USE
- LE LANDSCAPE EASEMENT NOW OFFERED FOR DEDICATION FOR PUBLIC USE
- PUE PUBLIC UTILITY EASEMENT NOW OFFERED FOR DEDICATION FOR PUBLIC USE
- M.D.B. & M. MOUNT DIABLO BASE & MERIDIAN
- BLUE BORDER INDICATES THE LIMITS OF THIS SUBDIVISION

CURVE	DELTA	TANGENT	RADIUS	LENGTH
C1	04°21'26"	19.02'	500.00'	38.02'
C2	04°21'26"	18.07'	475.00'	36.12'
C3	04°21'26"	19.97'	525.00'	39.93'
C4	02°16'13"	9.91'	500.00'	19.81'
C5	02°16'13"	10.40'	525.00'	20.80'
C6	02°16'13"	9.41'	475.00'	18.82'
C7	22°07'57"	9.39'	48.00'	18.54'
C8	02°51'31"	1.20'	48.00'	2.39'
C9	19°16'26"	8.15'	48.00'	16.15'
C10	134°35'10"	112.32'	47.00'	110.40'
C11	42°49'23"	18.43'	47.00'	35.13'
C12	48°45'44"	21.30'	47.00'	40.00'
C13	43°00'03"	18.51'	47.00'	35.27'
C14	22°07'57"	9.39'	48.00'	18.54'
C15	22°07'57"	9.39'	48.00'	18.54'
C16	132°10'36"	106.00'	47.00'	108.43'
C17	22°05'48"	9.18'	47.00'	18.13'
C18	48°45'44"	21.30'	47.00'	40.00'
C19	54°51'28"	24.39'	47.00'	45.00'
C20	06°27'36"	2.65'	47.00'	5.30'
C21	22°07'57"	9.39'	48.00'	18.54'
C22	04°33'53"	10.96'	275.00'	21.91'
C23	04°33'53"	9.96'	250.00'	19.92'
C24	04°33'53"	8.97'	225.00'	17.93'
C25	01°36'06"	3.15'	225.00'	6.29'
C26	02°57'47"	5.82'	225.00'	11.64'
C27	06°19'55"	13.83'	250.00'	27.63'
C28	06°19'55"	12.45'	225.00'	24.86'
C29	05°49'21"	11.44'	225.00'	22.86'
C30	00°30'34"	1.00'	225.00'	2.00'
C31	06°19'55"	15.21'	275.00'	30.39'
C32	22°07'56"	9.39'	48.00'	18.54'
C33	134°15'53"	111.44'	47.00'	110.14'
C34	36°53'19"	15.68'	47.00'	30.26'
C35	48°45'44"	21.30'	47.00'	40.00'
C36	48°36'50"	21.23'	47.00'	39.88'
C37	22°07'57"	9.39'	48.00'	18.53'
C38	03°58'14"	1.66'	48.00'	3.33'
C39	18°09'43"	7.67'	48.00'	15.22'

3/4" IRON PIPE, IN CONCRETE, DOWN 6", TAGGED RCE 26996 AS BEING THE 5' x 5' OFFSET FOR THE NORTHWEST CORNER OF OUTLOT C OF TRACT NO. 5966

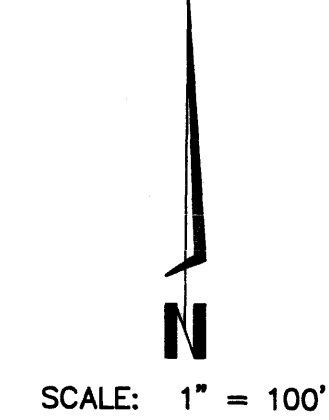
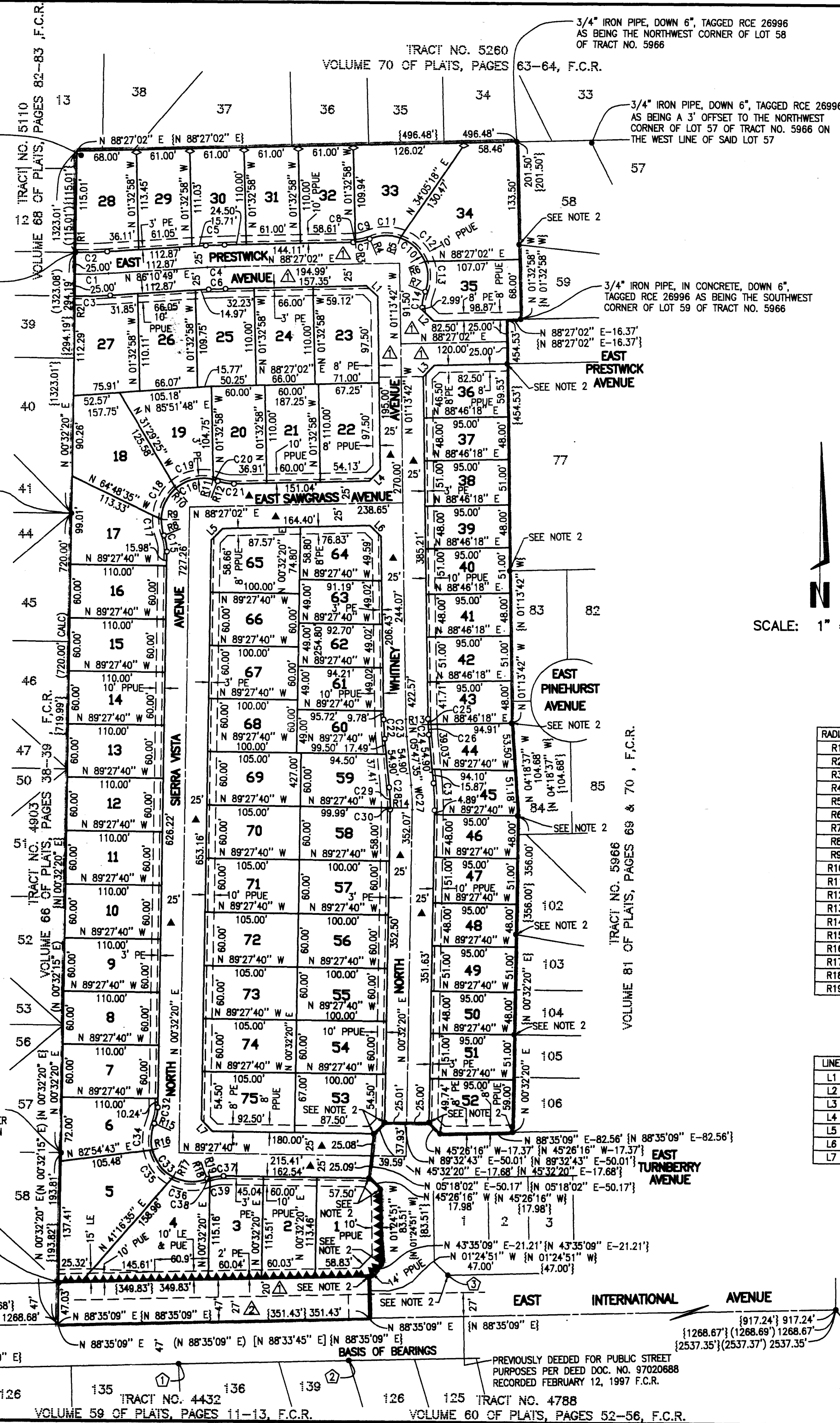
3/4" IRON PIPE, DOWN 13", TAGGED RCE 26996 AS BEING THE NORTHEAST CORNER OF TRACT NO. 4903 AND ON THE WEST LINE OF THE SOUTHEAST QUARTER OF THE NORTHWEST QUARTER OF SECTION 13

3/4" IRON PIPE, DOWN 6", TAGGED RCE 26996 AS BEING THE NORTHEAST CORNER OF LOT 45 OF TRACT NO. 4903 AND ON THE WEST LINE OF THE SOUTHEAST QUARTER OF SECTION 13

3/4" IRON PIPE, DOWN 4", TAGGED RCE 26996 AS BEING THE SOUTHWEST CORNER OF LOT 59 OF TRACT NO. 4903 AND ON THE WEST LINE OF THE SOUTHEAST QUARTER OF THE NORTHWEST QUARTER OF SECTION 13

3/4" IRON PIPE, IN CONCRETE, DOWN 4", TAGGED RCE 26996 AS BEING SOUTHWEST CORNER OF LOT 59 OF TRACT NO. 4903 AND ON THE WEST LINE OF THE SOUTHEAST QUARTER OF THE NORTHWEST QUARTER OF SECTION 13

THE WEST QUARTER CORNER OF SECTION 13, TOWNSHIP 12 SOUTH, RANGE 20 EAST, MOUNT DIABLO BASE AND MERIDIAN, FALLS ON SEWER MANHOLE. POSITION ESTABLISHED PER TIES ON FILE WITH FRESNO COUNTY SURVEYOR, CORNER RECORD NO. 6001



RADIAL	DIRECTION
R1	S 00°32'15" W
R2	S 00°32'15" W
R3	S 04°24'29" E
R4	N 23°40'55" W
R5	N 19°08'28" E
R6	N 67°54'12" E
R7	S 69°05'45" E
R8	S 68°24'23" W
R9	N 89°29'49" W
R10	N 40°44'05" W
R11	N 14°07'23" E
R12	N 20°34'56" E
R13	S 87°10'12" W
R14	S 89°58'14" E
R15	N 67°19'44" W
R16	N 75°46'57" W
R17	S 27°01'13" W
R18	S 21°35'37" E
R19	N 17°37'23" W

LINE	DIRECTION	DISTANCE
L1	N 46°23'20" W	17.63'
L2	N 46°23'20" W	17.63'
L3	N 43°36'40" E	17.73'
L4	N 43°36'40" E	17.73'
L5	N 44°29'41" E	18.00'
L6	N 46°23'20" W	17.63'
L7	N 44°27'40" W	17.68'

MONUMENTS:

- 3/4" IRON PIPE, DOWN 3", TAGGED RCE 19789 AS BEING THE NORTHWEST CORNER OF LOT 136 OF TRACT NO. 4432 AND 47.00' FROM THE SOUTH LINE OF THE NORTHWEST QUARTER OF SECTION 13
- 3/4" IRON PIPE, DOWN 3", TAGGED RCE 19789 AS BEING THE NORTHEAST CORNER OF LOT 139 OF TRACT NO. 4432 AND 47.00' FROM THE SOUTH LINE OF THE NORTHWEST QUARTER OF SECTION 13
- 3/4" IRON PIPE, IN CONCRETE, DOWN 6", TAGGED RCE 26996 AS BEING THE SOUTHERN MOST CORNER OF THE SOUTHWEST CORNER CUTOFF OF LOT 1 OF TRACT NO. 5966 AND 47.00' FROM THE SOUTH LINE OF THE NORTHWEST QUARTER OF SECTION 13

FRESNO COUNTY BRASS CAP MONUMENT FLUSH WITH A.C. TAGGED PLS 6619 AS BEING THE CENTER 1/4 CORNER OF SECTION 13, TOWNSHIP 12 SOUTH, RANGE 20 EAST, MOUNT DIABLO BASE AND MERIDIAN

PREVIOUSLY DEEDED FOR PUBLIC STREET PURPOSES PER DEED DOC. NO. 97020688 RECORDED FEBRUARY 12, 1997 F.C.R.

TRACT NO. 4432 VOLUME 59 OF PLATS, PAGES 11-13, F.C.R. TRACT NO. 4788 VOLUME 60 OF PLATS, PAGES 52-56, F.C.R.