



# Street Names, Addresses and (Lot Numbers) for T5971

Prepared on Wed Jun 21 21:22:21 2017



# TRACT NO. 5971

IN THE CITY OF FRESNO, FRESNO COUNTY,  
CALIFORNIA SURVEYED AND PLATTED IN  
SEPTEMBER, 2016 BY  
HARBOUR AND ASSOCIATES  
CONSISTING OF 2 SHEETS  
SHEET 2 OF 2

POSITION FOR THE NORTHWEST CORNER OF SECTION 23,  
TOWNSHIP 13 SOUTH, RANGE 21 EAST, MOUNT DIABLO BASE  
AND MERIDIAN

POSITION FOR THE NORTH QUARTER CORNER OF SECTION 23,  
TOWNSHIP 13 SOUTH, RANGE 21 EAST, MOUNT DIABLO BASE  
AND MERIDIAN

### LEGEND:

- ◆ FOUND SECTION CORNER AS NOTED.
- MONUMENT FOUND, AND ACCEPTED, AS NOTED.
- ⊙ FOUND, AND ACCEPTED, 3/4" IRON PIPE, DOWN 6", TAGGED LS 5277, UNLESS OTHERWISE NOTED.
- ⊠ SET 3/4" x 30" IRON PIPE, UP 4" IN 6" DIAMETER x 30" P.C.C. MONUMENT, DOWN 6", TAGGED LS 5277.
- ( ) RECORD DATA PER RECORD OF SURVEY RECORDED IN BOOK 55 OF RECORD OF SURVEYS AT PAGE 9, F.C.R., ALSO INDICATES MEASURED DATA.
- [ ] RECORD DATA PER TRACT No. 5935 RECORDED IN VOLUME 80 OF PLATS AT PAGES 82 AND 83, F.C.R.
- { } RECORD DATA PER TRACT No. 5237 RECORDED IN VOLUME 74 OF PLATS AT PAGES 25 THROUGH 32, F.C.R.
- △ EASEMENT FOR IRRIGATION PIPELINE GRANTED TO THE FRESNO IRRIGATION DISTRICT PER GRANT OF EASEMENT RECORDED MARCH 28, 2007 AS DOCUMENT No. 2007-0062939, O.R.F.C.
- △ EASEMENT FOR STREET PURPOSES GRANTED TO THE CITY OF FRESNO PER DEED OF EASEMENT RECORDED DECEMBER 12, 2008 AS DOCUMENT No. 2008-0170061, O.R.F.C.
- ▬▬▬▬ INDICATES RELINQUISHMENT OF DIRECT ACCESS RIGHTS.
- ▬▬▬▬ INDICATES LIMITS OF THIS SUBDIVISION.
- F.C.R. FRESNO COUNTY RECORDS.
- O.R.F.C. OFFICIAL RECORDS OF FRESNO COUNTY.

THE REAL PROPERTY DESCRIBED BELOW IS DEDICATED AS AN  
EASEMENT FOR PUBLIC PURPOSES:

PPUE PLANTING AND PUBLIC UTILITY EASEMENT NOW OFFERED FOR DEDICATION FOR PUBLIC USE.

LE LANDSCAPE EASEMENT NOW OFFERED FOR DEDICATION FOR PUBLIC USE.

PE PEDESTRIAN EASEMENT NOW OFFERED FOR DEDICATION FOR PUBLIC USE.

PUE PUBLIC UTILITY EASEMENT NOW OFFERED FOR DEDICATION FOR PUBLIC USE.

△ EASEMENT FOR PUBLIC STREET AND UTILITY PURPOSES, NOW OFFERED FOR DEDICATION FOR PUBLIC USE.

THE REAL PROPERTY DESCRIBED BELOW IS DEDICATED IN FEE TO  
THE CITY OF FRESNO FOR PUBLIC PURPOSES:

OUTLOT A: FOR OPEN SPACE PURPOSES SUBJECT TO CITY ACCEPTANCE  
OF DEVELOPER INSTALLED REQUIRED IMPROVEMENTS.

### RADIAL DATA:

RADIAL NUMBER	RADIAL BEARING	RADIUS
R 1	S 00°06'57" E	46.00'
R 2	N 71°30'18" W	46.00'
R 3	N 29°23'57" W	46.00'
R 4	S 69°32'21" E	46.00'
R 5	N 87°26'45" W	44.00'
R 6	N 70°55'40" W	44.00'
R 7	N 65°32'50" E	46.00'
R 8	N 20°49'30" E	46.00'
R 9	N 10°49'44" W	46.00'
R 10	S 08°56'09" W	3532.00'
R 11	S 02°57'10" W	180.00'
R 12	N 21°27'52" E	320.00'
R 13	N 09°48'16" E	320.00'
R 14	N 14°54'20" E	275.00'
R 15	N 04°19'27" E	275.00'
R 16	S 19°12'29" E	46.00'
R 17	S 22°33'00" W	46.00'
R 18	S 88°48'27" W	46.00'
R 19	N 70°53'05" W	46.00'
R 20	S 70°44'21" W	46.00'
R 21	N 80°36'52" W	46.00'
R 22	N 31°56'23" W	46.00'
R 23	N 21°50'48" E	46.00'
R 24	S 32°39'48" W	44.00'
R 25	S 13°12'46" W	3487.00'
R 26	S 12°16'58" W	3392.00'
R 27	S 11°21'11" W	3392.00'
R 28	S 10°25'24" W	3392.00'
R 29	S 09°29'37" W	3392.00'
R 30	S 08°33'50" W	3392.00'
R 31	S 08°33'51" W	3487.00'
R 32	S 09°29'38" W	3487.00'
R 33	S 10°25'25" W	3487.00'
R 34	S 11°21'12" W	3487.00'
R 35	S 12°16'59" W	3487.00'

### CURVE DATA:

CURVE NUMBER	DELTA	RADIUS	ARC LENGTH	CHORD LENGTH
C 1	0°12'17"	3392.00'	12.12'	12.12'
C 2	0°55'47"	3392.00'	55.04'	55.04'
C 3	0°05'13"	3532.00'	52.62'	52.62'
C 4	90°00'00"	12.00'	18.85'	16.97'
C 5	0°42'31"	3532.00'	43.68'	43.68'
C 6	0°53'32"	3532.00'	55.00'	55.00'
C 7	0°54'14"	3532.00'	55.72'	55.72'
C 8	0°51'11"	3532.00'	52.59'	52.59'
C 9	0°19'41"	3532.00'	20.22'	20.22'
C 10	16°31'05"	44.00'	12.68'	12.64'
C 11	43°31'30"	46.00'	34.94'	34.11'
C 12	44°43'20"	46.00'	35.91'	35.00'
C 13	31°39'14"	46.00'	25.41'	25.09'
C 14	19°11'17"	44.00'	14.74'	14.67'
C 15	81°31'30"	12.00'	17.07'	15.67'
C 16	60°43'00"	46.00'	48.75'	46.50'
C 17	42°06'21"	46.00'	33.80'	33.05'
C 18	108°36'39"	46.00'	87.20'	74.72'
C 19	90°00'00"	46.00'	72.26'	65.05'
C 20	81°37'15"	12.00'	17.09'	15.69'
C 21	26°55'44"	180.00'	84.60'	83.82'
C 22	9°49'28"	320.00'	54.87'	54.80'
C 23	11°39'36"	320.00'	65.12'	65.01'
C 24	5°26'40"	320.00'	30.41'	30.40'
C 25	26°55'44"	298.50'	140.29'	139.01'
C 26	26°55'44"	275.00'	129.25'	128.06'
C 27	89°56'50"	12.00'	18.84'	16.96'
C 28	41°45'29"	46.00'	33.53'	32.79'
C 29	66°15'27"	46.00'	53.19'	50.28'
C 30	20°18'28"	46.00'	16.30'	16.22'
C 31	28°38'47"	46.00'	23.00'	22.76'
C 32	48°40'29"	46.00'	39.08'	37.91'
C 33	53°47'11"	46.00'	43.18'	41.61'
C 34	10°49'00"	46.00'	8.68'	8.67'
C 35	103°32'53"	16.00'	28.92'	25.14'
C 36	0°12'18"	3487.00'	12.48'	12.48'
C 37	0°55'47"	3487.00'	56.58'	56.58'
C 38	0°15'45"	3487.00'	15.98'	15.98'
C 39	119°54'04"	46.00'	96.26'	79.63'
C 40	20°34'36"	46.00'	16.52'	16.43'
C 41	40°08'24"	46.00'	32.23'	31.57'
C 42	240°43'00"	46.00'	193.26'	79.39'
C 43	81°37'15"	46.00'	65.53'	60.13'
C 44	2°58'22"	180.00'	9.34'	9.34'
C 45	23°57'22"	180.00'	75.26'	74.71'
C 46	26°55'44"	201.50'	94.70'	93.84'
C 47	26°55'44"	225.00'	105.75'	104.78'
C 48	26°55'44"	320.00'	150.40'	149.02'
C 49	4°20'39"	275.00'	20.85'	20.84'
C 50	10°34'53"	275.00'	50.79'	50.71'
C 51	12°00'12"	275.00'	57.61'	57.51'
C 52	128°19'24"	46.00'	103.02'	82.80'
C 53	141°55'27"	46.00'	113.94'	86.97'

### LINE DATA:

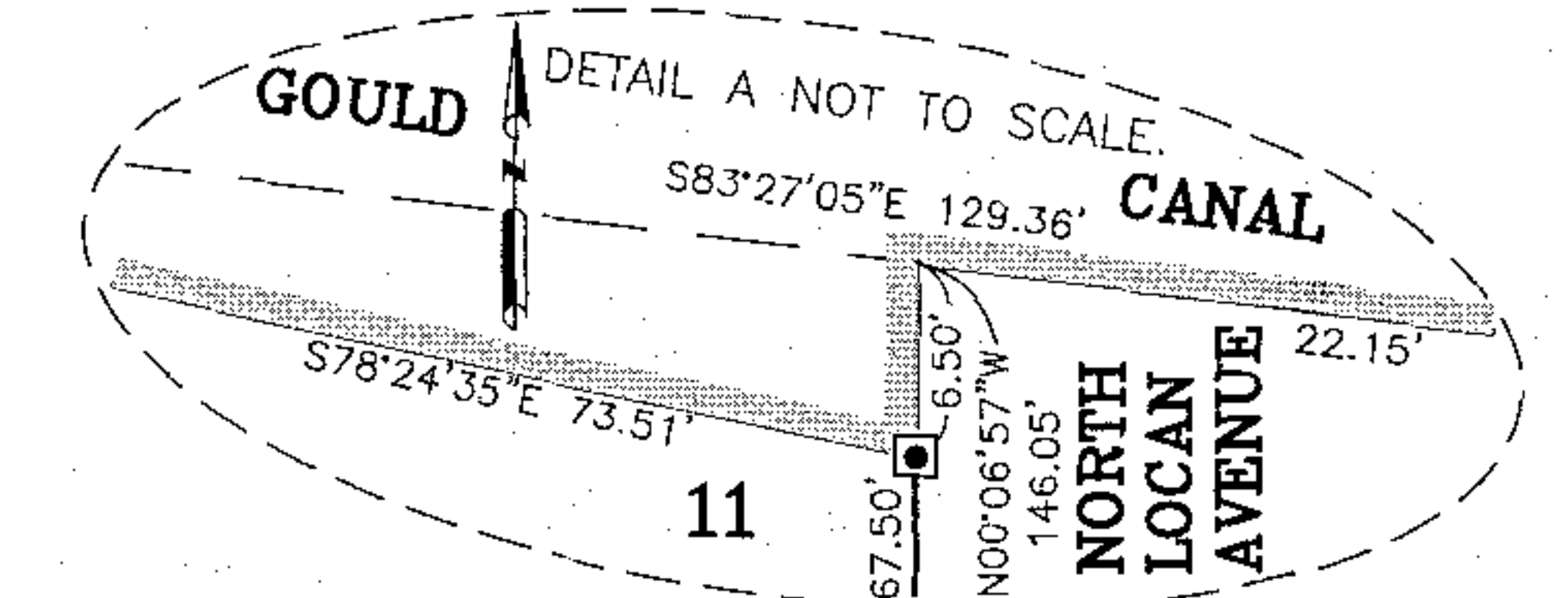
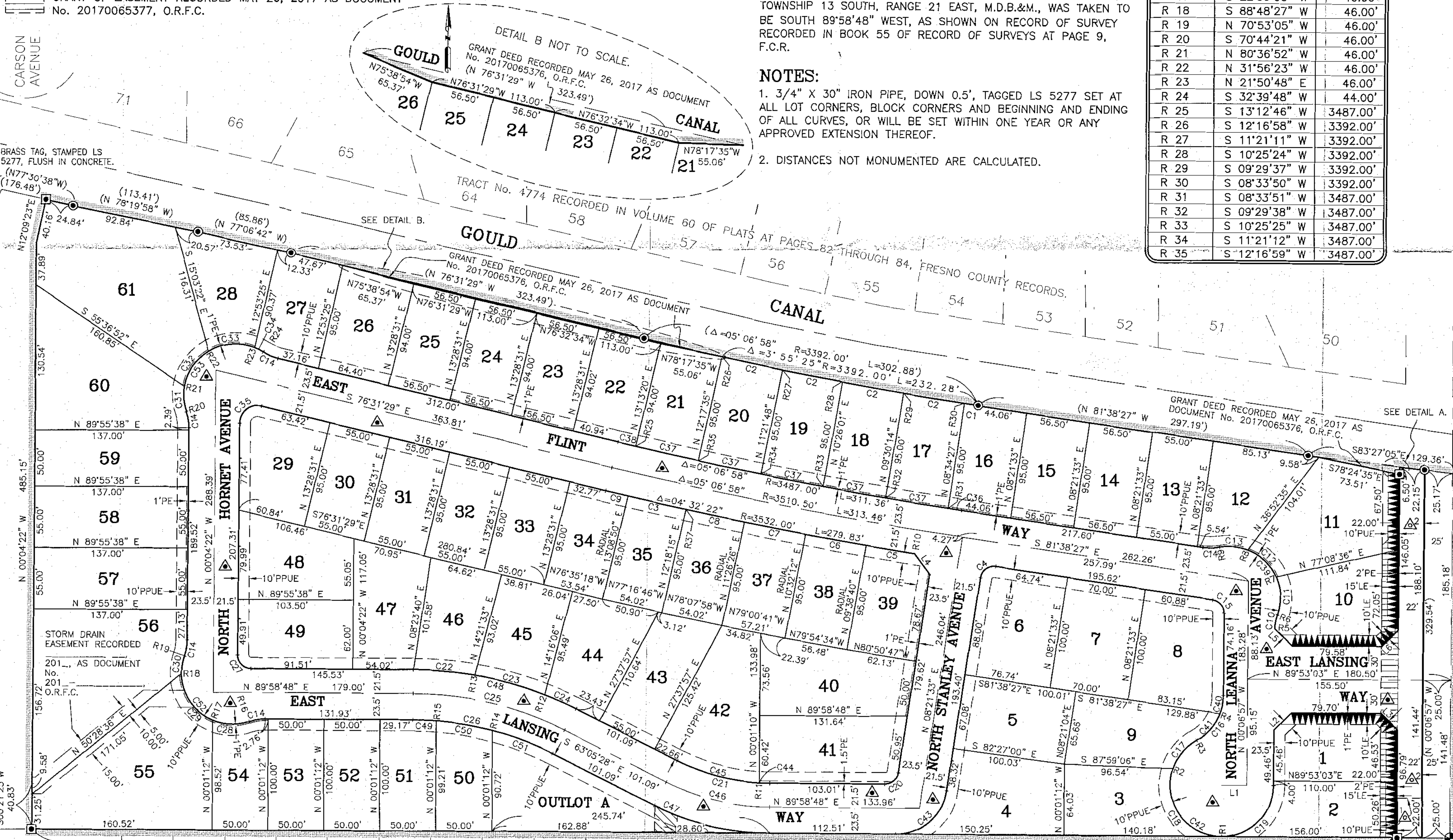
LINE NUMBER	BEARING	DISTANCE
L 1	N 89°53'03" E	22.50'
L 2	N 44°53'03" E	22.18'
L 3	S 45°06'57" E	20.67'
L 4	S 36°24'03" E	23.18'
L 5	S 45°33'34" E	22.11'
L 6	N 44°53'03" E	20.67'

### BASIS OF BEARINGS:

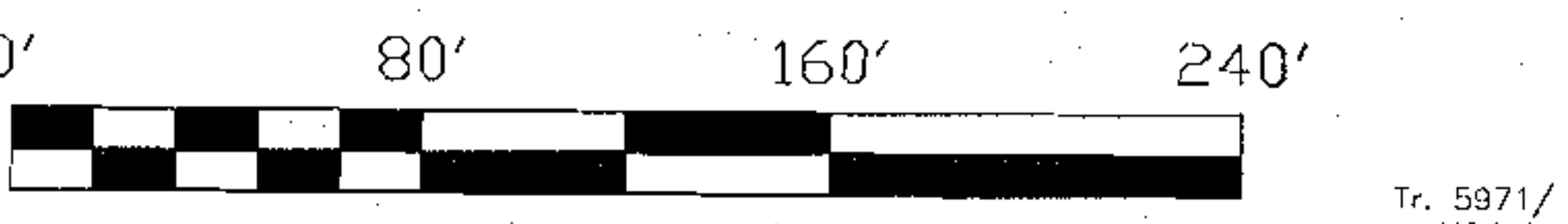
THE SOUTH LINE OF THE NORTHWEST QUARTER OF SECTION 23,  
TOWNSHIP 13 SOUTH, RANGE 21 EAST, M.D.B.&M., WAS TAKEN TO  
BE SOUTH 89°58'48" WEST, AS SHOWN ON RECORD OF SURVEY  
RECORDED IN BOOK 55 OF RECORD OF SURVEYS AT PAGE 9,  
F.C.R.

### NOTES:

- 3/4" X 30" IRON PIPE, DOWN 0.5', TAGGED LS 5277 SET AT ALL LOT CORNERS, BLOCK CORNERS AND BEGINNING AND ENDING OF ALL CURVES, OR WILL BE SET WITHIN ONE YEAR OR ANY APPROVED EXTENSION THEREOF.
- DISTANCES NOT MONUMENTED ARE CALCULATED.



CENTER QUARTER CORNER OF SECTION 23, TOWNSHIP 13 SOUTH, RANGE 21 EAST,  
MOUNT DIABLO BASE AND MERIDIAN. FOUND BRASS CAP, FLUSH IN PAVEMENT,  
TAGGED LS 6619, VERIFIED PER COUNTY CORNER RECORD #1790.



WEST QUARTER CORNER OF SECTION 23, TOWNSHIP 13 SOUTH, RANGE 21 EAST, MOUNT DIABLO BASE AND MERIDIAN. FOUND 3/4" IRON PIPE, FLUSH IN PAVEMENT, VERIFIED PER COUNTY CORNER RECORD #1157.

SCALE: 1" = 80'

TRACT No. 5935 RECORDED IN VOLUME 80 OF PLATS AT PAGES 82 AND 83, FRESNO COUNTY RECORDS.

20' WIDE WATER LINE EASEMENT RECORDED 2017 AS DOCUMENT No. 2017-0062939, O.R.F.C.

FOUND 3/4" IRON PIPE, DOWN 6", TAGGED LS 6619, REPLACED WITH 3/4" X 30" IRON PIPE, UP 4" IN 6" DIAMETER x 30" P.C.C. MONUMENT, DOWN 6", TAGGED LS 5277.