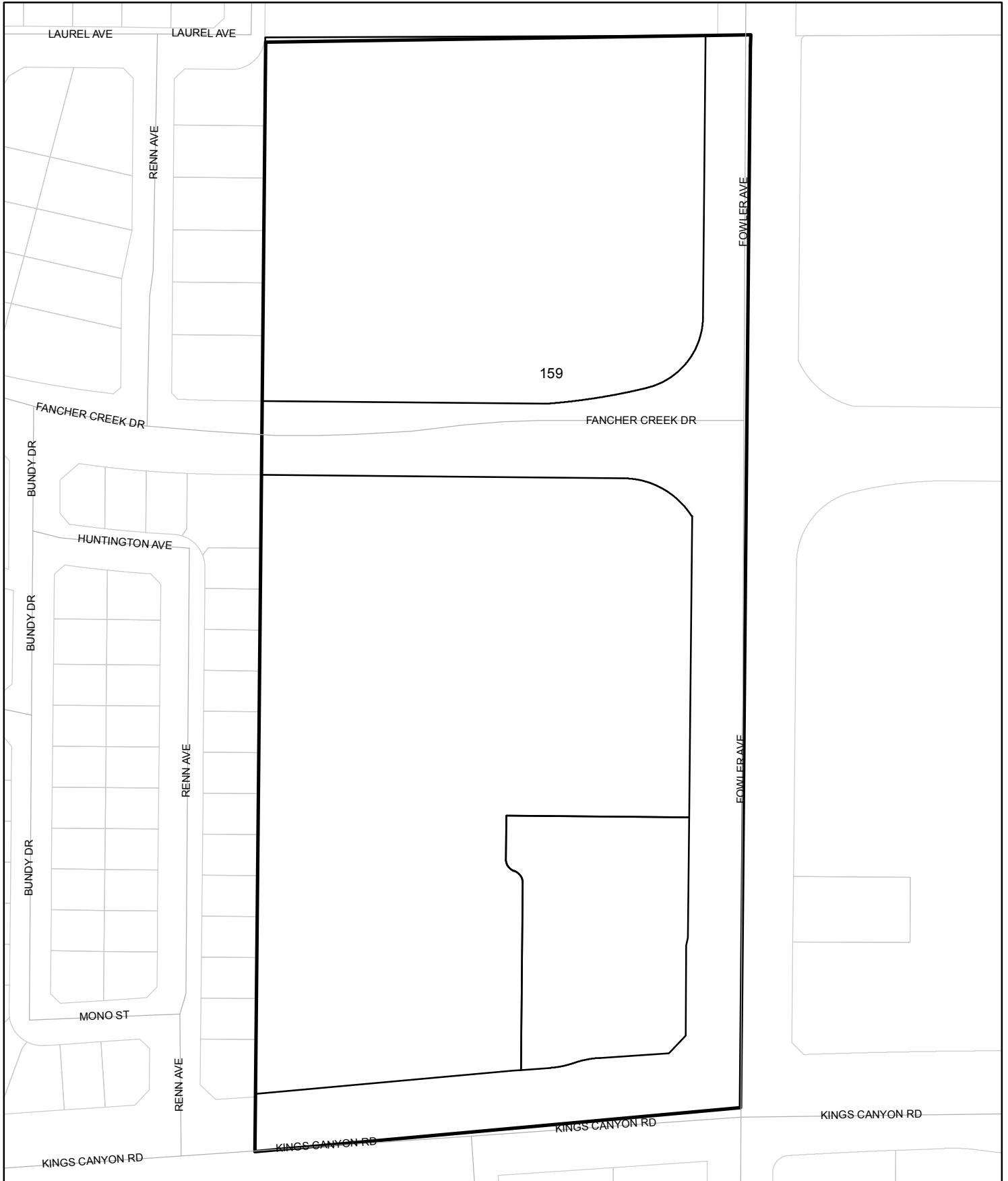




Street Names, Addresses and (Lot Numbers) for T5968

Prepared on Mon Oct 22 13:46:53 2018



TRACT NO. 5968

PHASE I OF VESTING TENTATIVE MAP NO. 5968
 BEING A SUBDIVISION OF A PORTION OF THE SOUTHEAST QUARTER OF SECTION 4,
 TOWNSHIP 14 SOUTH, RANGE 21 EAST, MOUNT DIABLO BASE AND MERIDIAN

IN THE CITY OF FRESNO, COUNTY OF FRESNO, STATE OF CALIFORNIA
 SURVEYED AND PLATTED IN MARCH 2011, BY GARY G. GIANNETTA
CONSISTING OF TWO SHEETS
SHEET TWO OF TWO SHEETS

BASIS OF BEARINGS

THE WEST LINE OF THE SOUTHWEST QUARTER OF SECTION 3,
 TOWNSHIP 14 SOUTH, RANGE 21 EAST, MOUNT DIABLO BASE AND
 MERIDIAN AS BEING NORTH 0°00'03" EAST, AS SHOWN ON THE
 FINAL MAP OF TRACT NO. 5232, RECORDED IN VOLUME 79, PAGES
 45 THROUGH 70, INCLUSIVE, OF PLATS, FRESNO COUNTY RECORDS.

NOTE:

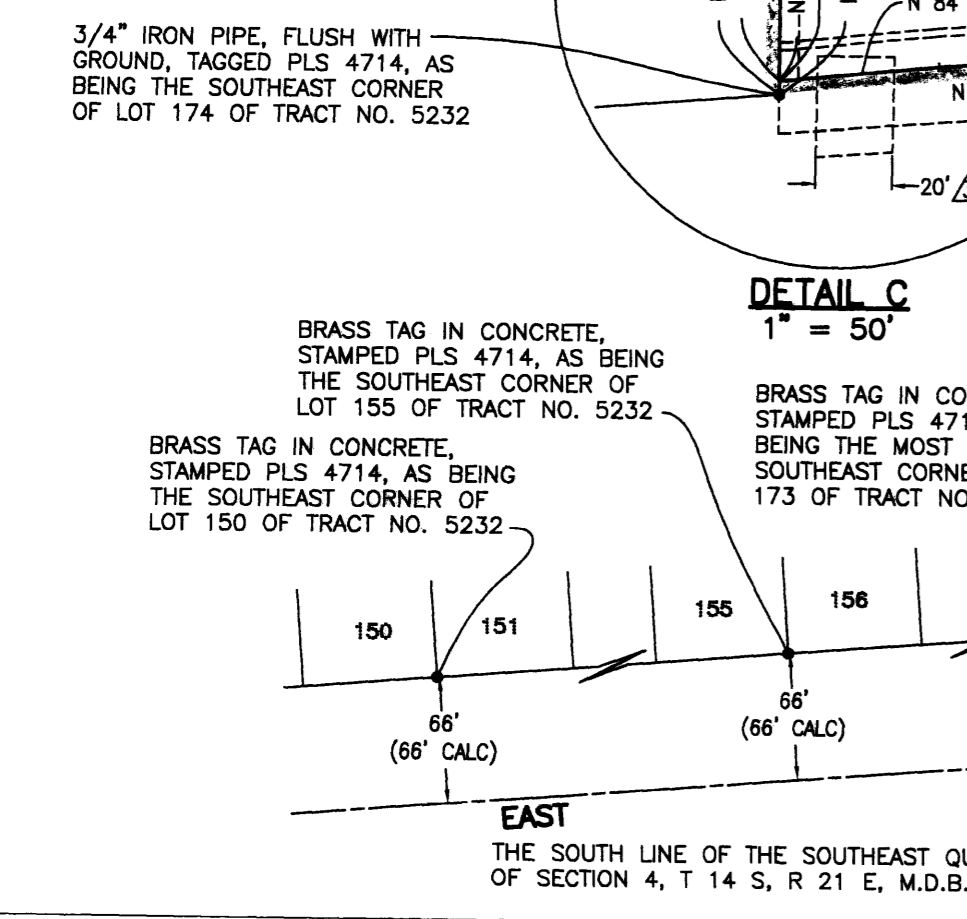
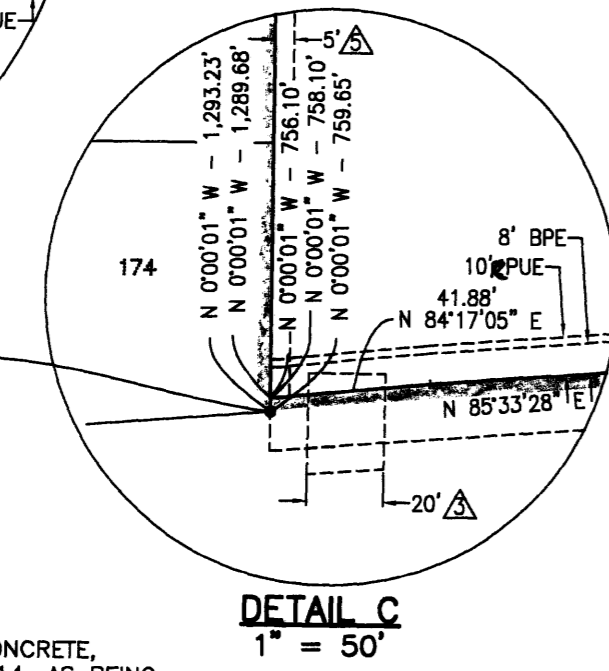
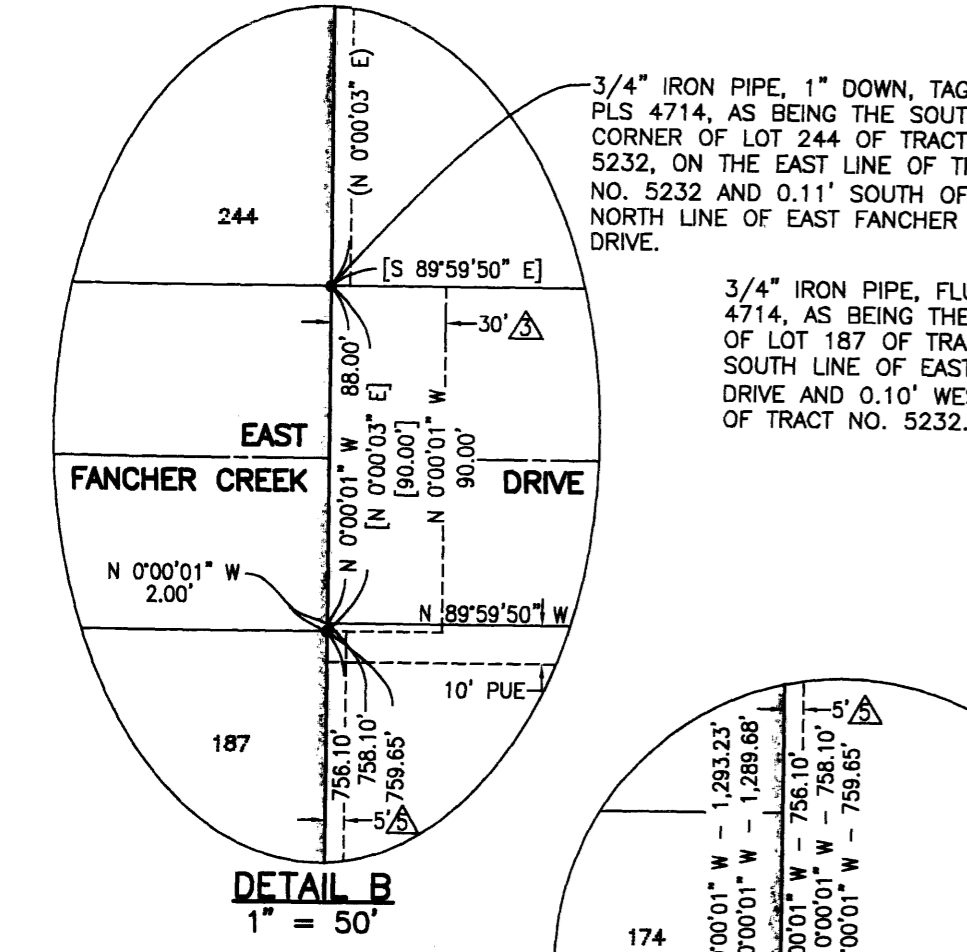
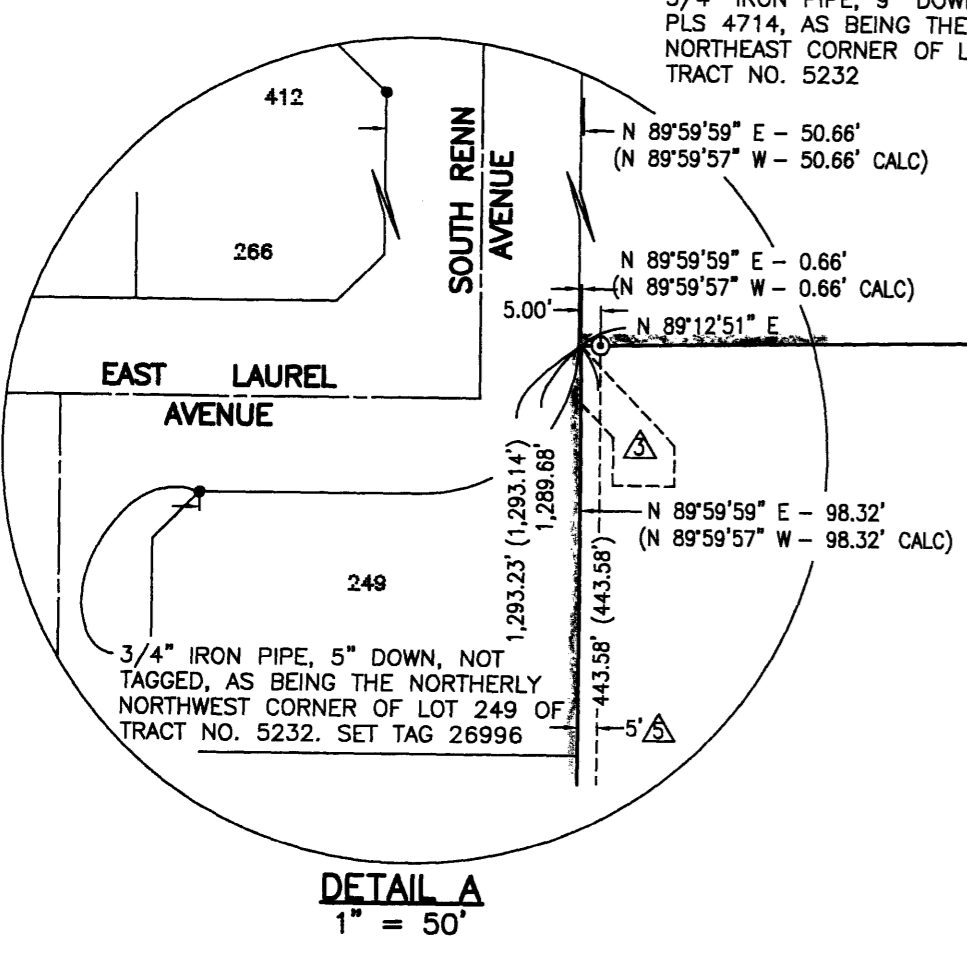
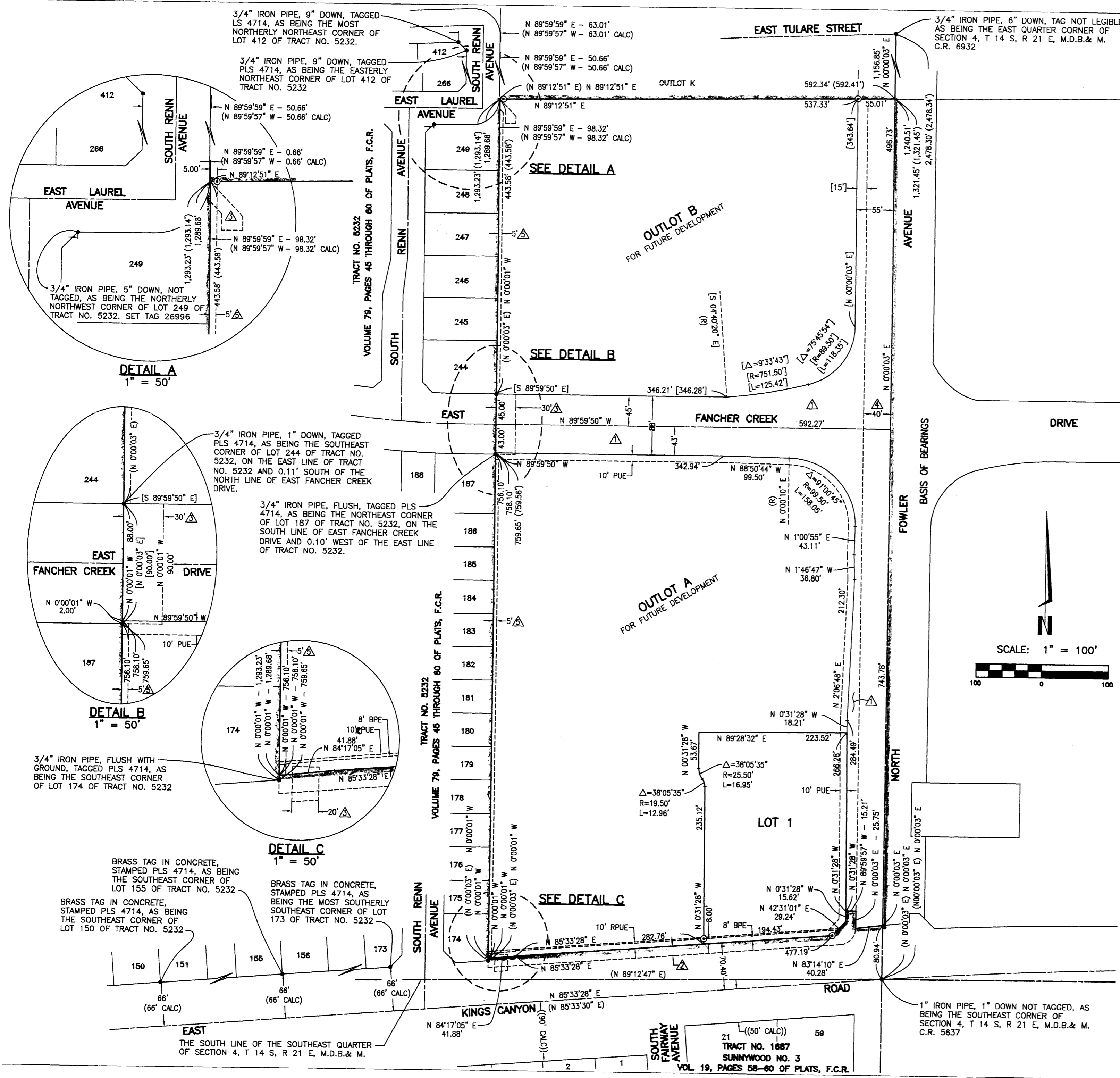
- SET 3/4" IRON PIPE, 6" DOWN, TAGGED
 RCE 26996 AT ALL LOT CORNERS AND ANGLE POINTS

LEGEND:

- MONUMENT FOUND AND ACCEPTED AS NOTED
- SET 3/4" IRON PIPE, 30" LONG, FLUSH WITH A.C.,
 TAGGED RCE 26996
- ⊙ SET 3/4" IRON PIPE, 30" LONG, 4" UP IN 6" DIAMETER x 30" P.C.C.
 MONUMENT, DOWN 6" BELOW GROUND, TAGGED R.C.E. 26996
- () RECORD DATA AS PER THE FINAL MAP OF TRACT NO. 5232, RECORDED IN
 VOLUME 79, PAGES 45 THROUGH 60, INCLUSIVE, OF PLATS, FRESNO
 COUNTY RECORDS.
- [] RECORD DATA AS PER DEED OF EASEMENT FOR PUBLIC STREET PURPOSES,
 RECORDED AUGUST 03, 2007 AS DOC. NO. 2007-0148116, OFFICIAL
 RECORDS OF FRESNO COUNTY.
- (()) RECORD DATA AS PER THE MAP OF TRACT NO. 1687, SUNNYWOOD NO. 3,
 RECORDED IN VOLUME 19, PAGES 58 THROUGH 60, INCLUSIVE, OF PLATS,
 FRESNO COUNTY RECORDS.
- △ EASEMENT PREVIOUSLY DEEDED TO THE CITY OF FRESNO FOR STREET
 PURPOSES, RECORDED AUGUST 3, 2007 AS DOC. NO. 2007-0148116,
 OFFICIAL RECORDS OF FRESNO COUNTY.
- △ PREVIOUSLY DEEDED TO THE STATE OF CALIFORNIA AS PER GRANT DEED
 RECORDED MAY 4, 2007 AS DOC. NO. 2007-0089148, OFFICIAL RECORDS
 OF FRESNO COUNTY.
- △ BAKMAN WATER EASEMENT, RECORDED OCTOBER 20, 2006 AS DOC. NO.
 2006-0224905, F.C.R.
- △ PREVIOUSLY DEEDED FOR PUBLIC STREET EASEMENT PURPOSES AS PER
 DEED RECORDED NOVEMBER 28, 1900 IN BOOK 245, PAGE 276 OF DEEDS,
 OFFICIAL RECORDS OF FRESNO COUNTY.
- △ SLOPE EASEMENT RECORDED MAY 9, 2007 AS DOCUMENT NO.
 2007-0092658, OFFICIAL RECORDS OF FRESNO COUNTY.
- BPE BIKE AND PEDESTRIAN EASEMENT NOW OFFERED FOR DEDICATION FOR
 PUBLIC USE.
- CALC CALCULATED FROM RECORD DATA
- F.C.R. FRESNO COUNTY RECORDS
- PUE PUBLIC UTILITY EASEMENT NOW OFFERED FOR DEDICATION FOR PUBLIC USE.
- RPUE PUBLIC UTILITY EASEMENT RESTRICTED TO SUB-SURFACE FACILITIES NOW
 OFFERED FOR DEDICATION FOR PUBLIC USE.
- BLUE BORDER INDICATES THE LIMITS OF THIS SUBDIVISION

THOSE PORTIONS OF PUBLIC STREETS DEDICATED OR DEEDED,
 WHICH ARE NOT DELINEATED ON THIS MAP ARE DEEMED
 ABANDONED PURSUANT TO SECTION 66499.20 1/2 OF THE
 SUBDIVISION MAP ACT, DESCRIBED AS FOLLOWS:

- NORTH FOWLER AVENUE AND EAST FANCHER CREEK DRIVE,
 PREVIOUSLY DEEDED TO THE CITY OF FRESNO FOR STREET
 PURPOSES, RECORDED AUG. 3, 2007 AS DOC. NO. 2007-0148116,
 OFFICIAL RECORDS OF FRESNO COUNTY.
- EAST KINGS CANYON ROAD, PREVIOUSLY DEEDED TO THE STATE OF
 CALIFORNIA AS PER GRANT DEED RECORDED MAY 4, 2007 AS DOC.
 NO. 2007-0089148, OFFICIAL RECORDS OF FRESNO COUNTY.



21
 TRACT NO. 1687
 SUNNYWOOD NO. 3
 VOL 19, PAGES 58-60 OF PLATS, F.C.R.