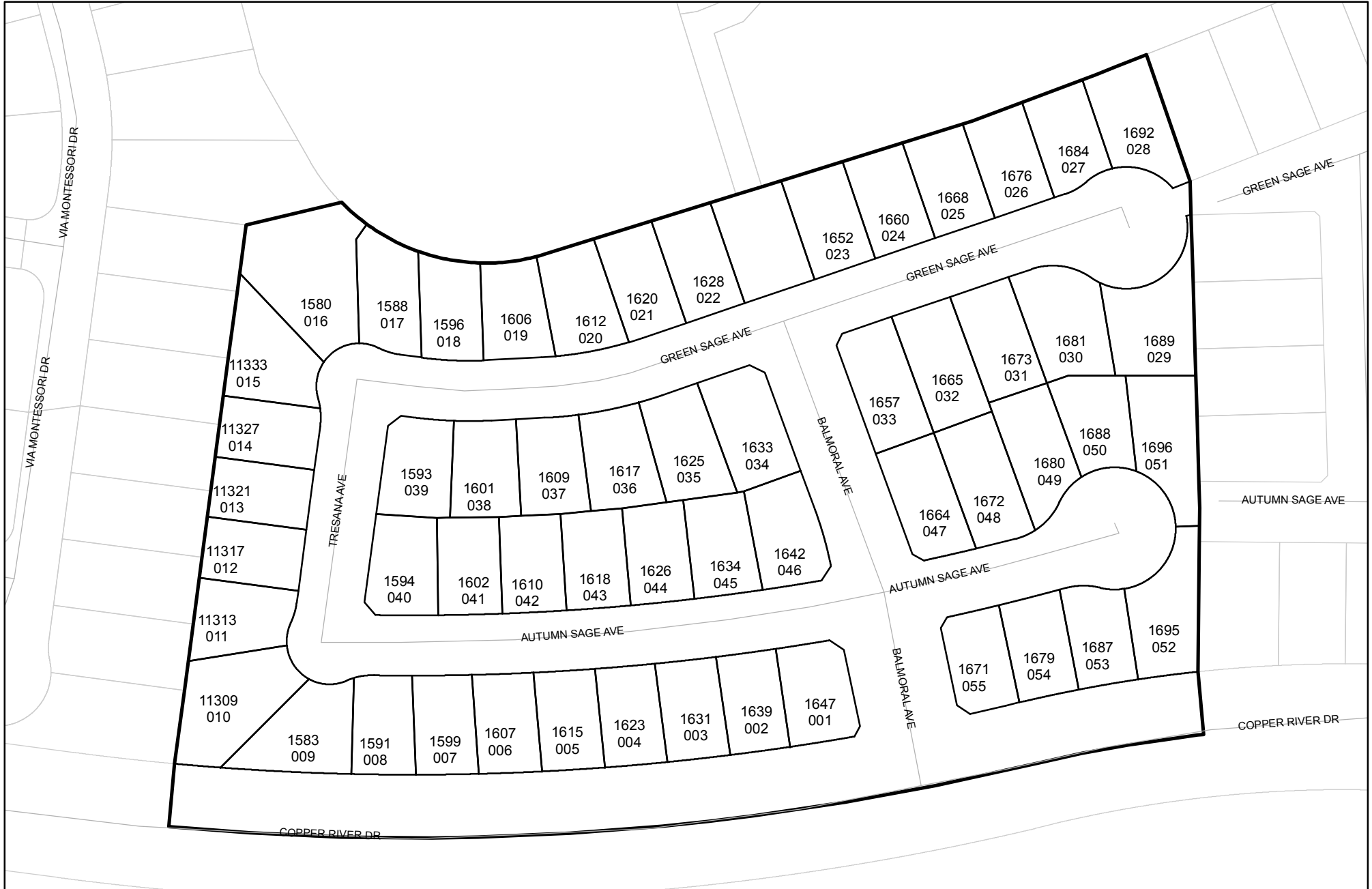




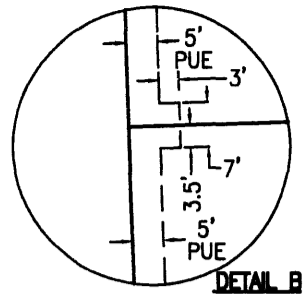
Prepared on Mon Oct 22 13:47:34 2018

Street Names, Addresses and (Lot Numbers) for T5963

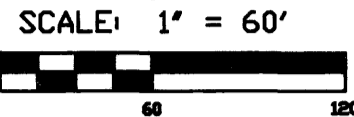


MONUMENTS:

- (A) 3/4" IRON PIPE, DOWN 6" IN CONCRETE, TAGGED LS 7680 AS BEING THE SOUTHEAST CORNER OF THE 22' MULTI PURPOSE TRAIL EASEMENT EAST OF NORTH CEDAR AVENUE SHOWN ON THE AMENDING MAP OF TRACT NO. 5205 AND 23.00' FROM THE CENTERLINE OF EAST COPPER AVENUE
- (B) 3/4" IRON PIPE, DOWN 6", TAGGED LS 7680 AS BEING A 3' OFFSET TO THE BEGINNING OF CURVE OF THE 2017.00' RADIUS CURVE ON THE SOUTH SIDE OF EAST COPPER RIVER DRIVE AS SHOWN ON AMENDING MAP OF TRACT NO. 5205 AND 44.00' FROM THE CENTERLINE OF EAST COPPER RIVER DRIVE



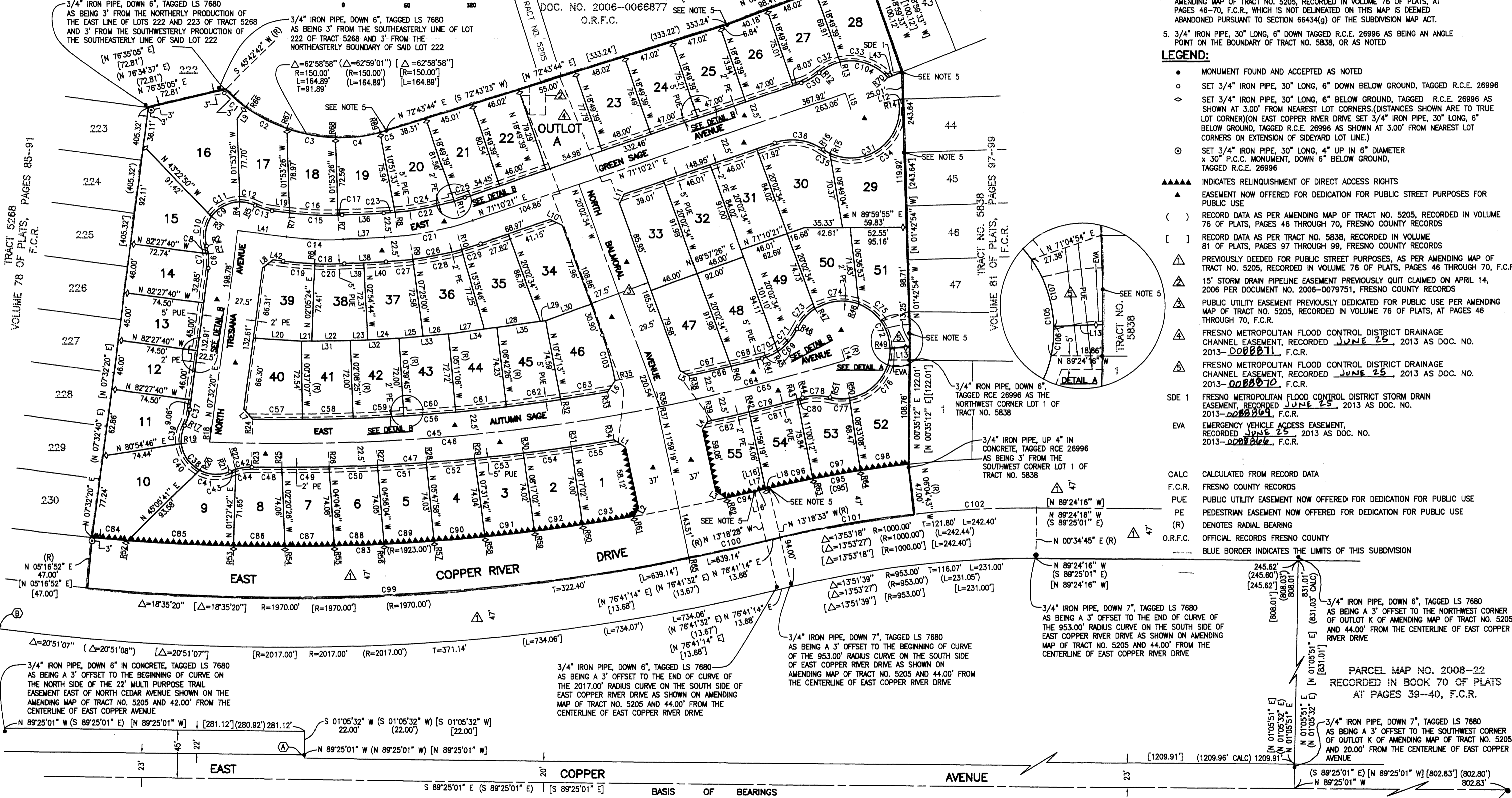
PARCEL B LLA 04-03
DCC. NO. 2004-0281279
C.R.F.C.



TRACT NO. 5963

A PLANNED DEVELOPMENT
BEING A RE-SUBDIVISION OF OUTLOT D OF TRACT NO. 5838,
RECORDED IN VOLUME 81 OF PLATS, PAGES 97 THROUGH 99,
FRESNO COUNTY RECORDS
IN THE CITY OF FRESNO, COUNTY OF CALIFORNIA
SURVEYED AND PLATTED IN SEPTEMBER 2012, BY GARY G. GIANNETTA
CONSISTING OF THREE SHEETS
SHEET TWO OF THREE SHEETS

PARCEL D LLA 2005-38 (N 69°22'50" E [98.41] N 69°22'28" E [98.41] N 69°22'50" E [98.41] N 68°15'03" E [41.17] N 68°15'03" E [41.17])
DCC. NO. 2006-0066877 SEE NOTE 5
C.R.F.C.



BASIS OF BEARINGS

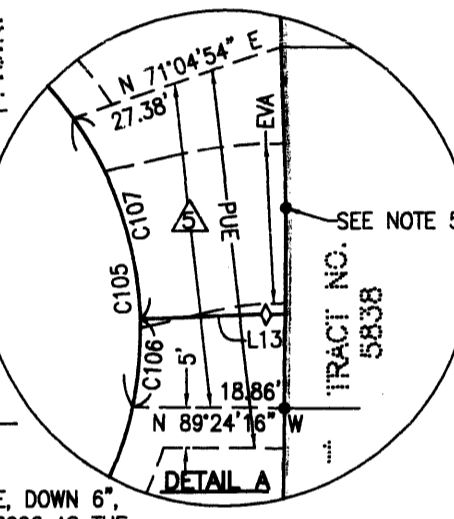
THE SOUTH LINE OF THE SOUTHEAST QUARTER OF SECTION 11, TOWNSHIP 12 SOUTH, RANGE 20 EAST, MOUNT DIABLO BASE AND MERIDIAN, TAKEN AS BEARING S 89°25'01" E, AS PER AMENDING MAP OF TRACT NO. 5205, RECORDED IN VOLUME 76 OF PLATS, PAGES 46 THROUGH 70, FRESNO COUNTY RECORDS. ESTABLISHED WITH FOUND MONUMENTS ON THE NORTH RIGHT-OF-WAY LINE OF EAST COPPER AVENUE.

NOTE:

- SET 3/4" IRON PIPE, 6" DOWN, TAGGED R.C.E. 26996 AT ALL LOT CORNERS AND ANGLE POINTS
- OUTLOT A IS DEDICATED IN FEE TO THE CITY OF FRESNO FOR OPEN SPACE AND STORM DRAIN PURPOSES SUBJECT TO CITY ACCEPTANCE OF DEVELOPER INSTALLED REQUIRED IMPROVEMENTS.
- SEE SHT. 3 FOR CURVE, LINE AND RADIAL DATA
- THAT PORTION OF PUBLIC UTILITY EASEMENT PREVIOUSLY DEDICATED PER THE AMENDING MAP OF TRACT NO. 5205, RECORDED IN VOLUME 76 OF PLATS, AT PAGES 46-70, F.C.R., WHICH IS NOT DELINEATED ON THIS MAP IS DEEMED ABANDONED PURSUANT TO SECTION 66434(g) OF THE SUBDIVISION MAP ACT.
- 3/4" IRON PIPE, 30" LONG, 6" DOWN TAGGED R.C.E. 26996 AS BEING AN ANGLE POINT ON THE BOUNDARY OF TRACT NO. 5838, OR AS NOTED

LEGEND:

- MONUMENT FOUND AND ACCEPTED AS NOTED
- SET 3/4" IRON PIPE, 30" LONG, 6" DOWN BELOW GROUND, TAGGED R.C.E. 26996
- ◇ SET 3/4" IRON PIPE, 30" LONG, 6" BELOW GROUND, TAGGED R.C.E. 26996 AS SHOWN AT 3.00' FROM NEAREST LOT CORNERS (DISTANCES SHOWN ARE TO TRUE LOT CORNER) ON EAST COPPER RIVER DRIVE SET 3/4" IRON PIPE, 30" LONG, 6" BELOW GROUND, TAGGED R.C.E. 26996 AS SHOWN AT 3.00' FROM NEAREST LOT CORNERS ON EXTENSION OF SIDEYARD LOT LINE.)
- ⊙ SET 3/4" IRON PIPE, 30" LONG, 4" UP IN 6" DIAMETER x 30" P.C.C. MONUMENT, DOWN 6" BELOW GROUND, TAGGED R.C.E. 26996
- ▲▲▲▲ INDICATES RELINQUISHMENT OF DIRECT ACCESS RIGHTS
- ▲ EASEMENT NOW OFFERED FOR DEDICATION FOR PUBLIC STREET PURPOSES FOR PUBLIC USE
- () RECORD DATA AS PER AMENDING MAP OF TRACT NO. 5205, RECORDED IN VOLUME 76 OF PLATS, PAGES 46 THROUGH 70, FRESNO COUNTY RECORDS
- [] RECORD DATA AS PER TRACT NO. 5838, RECORDED IN VOLUME 81 OF PLATS, PAGES 97 THROUGH 99, FRESNO COUNTY RECORDS
- △ PREVIOUSLY DEEDED FOR PUBLIC STREET PURPOSES, AS PER AMENDING MAP OF TRACT NO. 5205, RECORDED IN VOLUME 76 OF PLATS, PAGES 46 THROUGH 70, F.C.R.
- △ 15' STORM DRAIN PIPELINE EASEMENT PREVIOUSLY QUIT CLAIMED ON APRIL 14, 2006 PER DOCUMENT NO. 2006-0079751, FRESNO COUNTY RECORDS
- △ PUBLIC UTILITY EASEMENT PREVIOUSLY DEDICATED FOR PUBLIC USE PER AMENDING MAP OF TRACT NO. 5205, RECORDED IN VOLUME 76 OF PLATS, AT PAGES 46 THROUGH 70, F.C.R.
- △ FRESNO METROPOLITAN FLOOD CONTROL DISTRICT DRAINAGE CHANNEL EASEMENT, RECORDED JUNE 25, 2013 AS DOC. NO. 2013-008801, F.C.R.
- △ FRESNO METROPOLITAN FLOOD CONTROL DISTRICT DRAINAGE CHANNEL EASEMENT, RECORDED JUNE 25, 2013 AS DOC. NO. 2013-008801, F.C.R.
- SDE 1 FRESNO METROPOLITAN FLOOD CONTROL DISTRICT STORM DRAIN EASEMENT, RECORDED JUNE 25, 2013 AS DOC. NO. 2013-008801, F.C.R.
- EVA EMERGENCY VEHICLE ACCESS EASEMENT, RECORDED JUNE 25, 2013 AS DOC. NO. 2013-008801, F.C.R.
- CALC CALCULATED FROM RECORD DATA
- F.C.R. FRESNO COUNTY RECORDS
- PUE PUBLIC UTILITY EASEMENT NOW OFFERED FOR DEDICATION FOR PUBLIC USE
- PE PEDESTRIAN EASEMENT NOW OFFERED FOR DEDICATION FOR PUBLIC USE
- (R) DENOTES RADIAL BEARING
- O.R.F.C. OFFICIAL RECORDS FRESNO COUNTY
- BLUE BORDER INDICATES THE LIMITS OF THIS SUBDIVISION



3/4" IRON PIPE, DOWN 6", TAGGED RCE 26996 AS THE NORTHWEST CORNER LOT 1 OF TRACT NO. 5838

3/4" IRON PIPE, UP 4" IN CONCRETE, TAGGED RCE 26996 AS BEING 3' FROM THE SOUTHWEST CORNER LOT 1 OF TRACT NO. 5838

THE SOUTHEAST CORNER OF THE SOUTHEAST QUARTER OF SECTION 11, TOWNSHIP 12 SOUTH, RANGE 20 EAST, MOUNT DIABLO BASE AND MERIDIAN, SCOTT MCKAY MONUMENT, DOWN 14", CONFIRMED WITH TIES ON RECORD. C.R. 05880