



Prepared on Mon Oct 22 13:49:28 2018

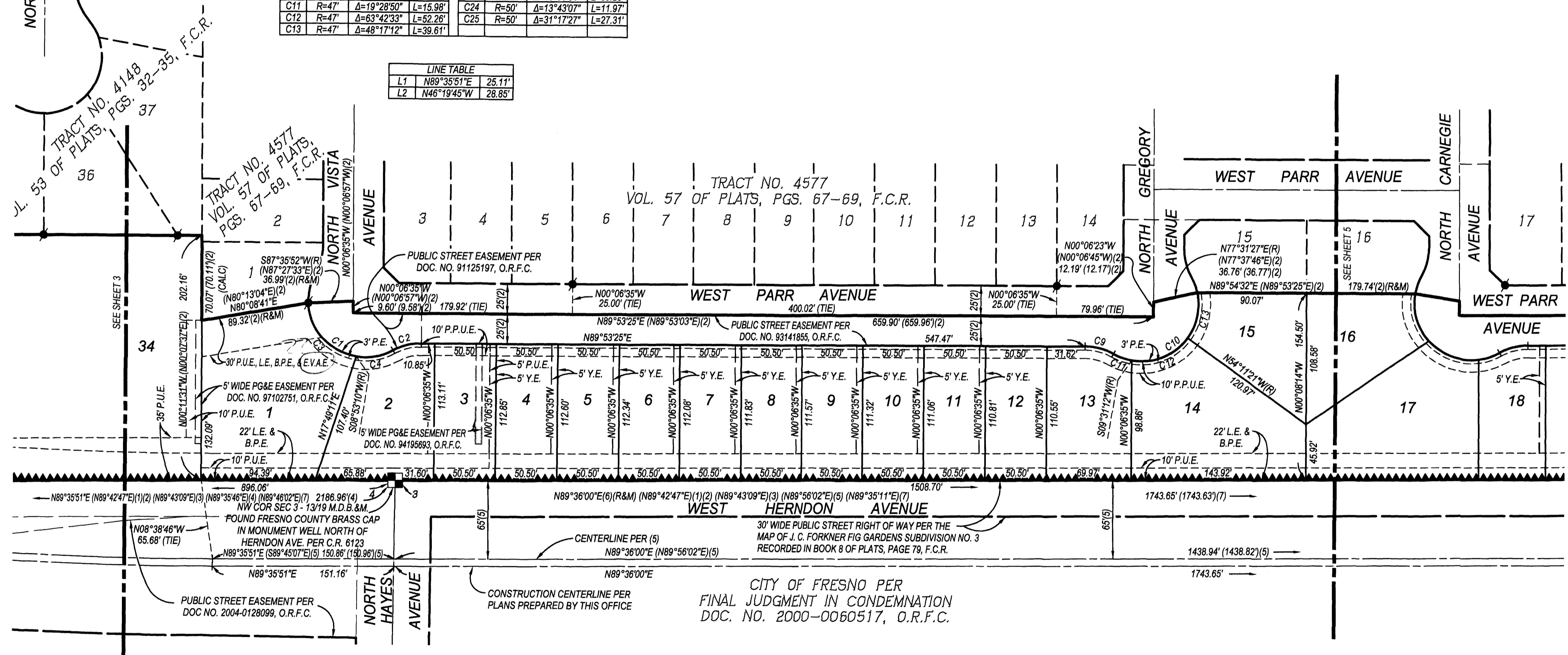
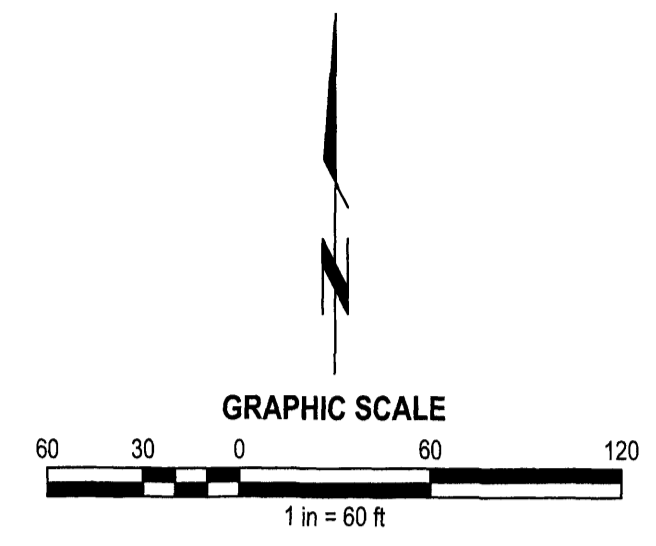
Street Names, Addresses and (Lot Numbers) for T5914



NORTH ERIE AVENUE

CURVE TABLE							
C1	R=47'	Δ=116°49'04"	L=95.83'	C14	R=47'	Δ=129°07'22"	L=105.92'
C2	R=48'	Δ=29°06'37"	L=24.39'	C15	R=47'	Δ=51°23'48"	L=42.16'
C3	R=47'	Δ=78°42'42"	L=64.57'	C16	R=47'	Δ=55°50'17"	L=45.80'
C4	R=47'	Δ=38°06'22"	L=31.26'	C17	R=47'	Δ=21°53'17"	L=17.95'
C5	R=2661'	Δ=1°51'51"	L=86.58'	C18	R=48'	Δ=29°06'37"	L=24.39'
C6	R=80'	Δ=11°42'02"	L=16.34'	C19	R=2554'	Δ=00°52'47"	L=39.21'
C7	R=100'	Δ=12°30'57"	L=21.84'	C20	R=2554'	Δ=01°07'19"	L=50.01'
C8	R=2665'	Δ=3°24'52"	L=158.82'	C21	R=2554'	Δ=01°07'22"	L=50.05'
C9	R=48'	Δ=29°06'37"	L=24.39'	C22	R=2554'	Δ=01°02'56"	L=46.75'
C10	R=47'	Δ=131°28'35"	L=107.85'	C23	R=50'	Δ=45°00'34"	L=39.28'
C11	R=47'	Δ=19°28'50"	L=15.98'	C24	R=50'	Δ=13°43'07"	L=11.97'
C12	R=47'	Δ=63°42'33"	L=52.26'	C25	R=50'	Δ=31°17'27"	L=27.31'
C13	R=47'	Δ=48°17'12"	L=39.61'				

LINE TABLE		
L1	N89°35'51"E	25.11'
L2	N46°19'45"W	28.85'



CITY OF FRESNO PER
FINAL JUDGMENT IN CONDEMNATION
DOC. NO. 2000-0060517, O.R.F.C.

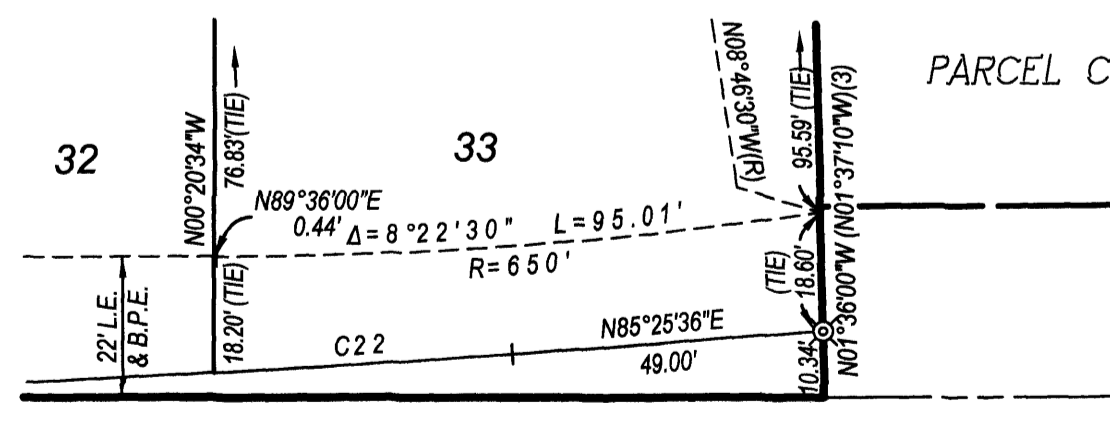
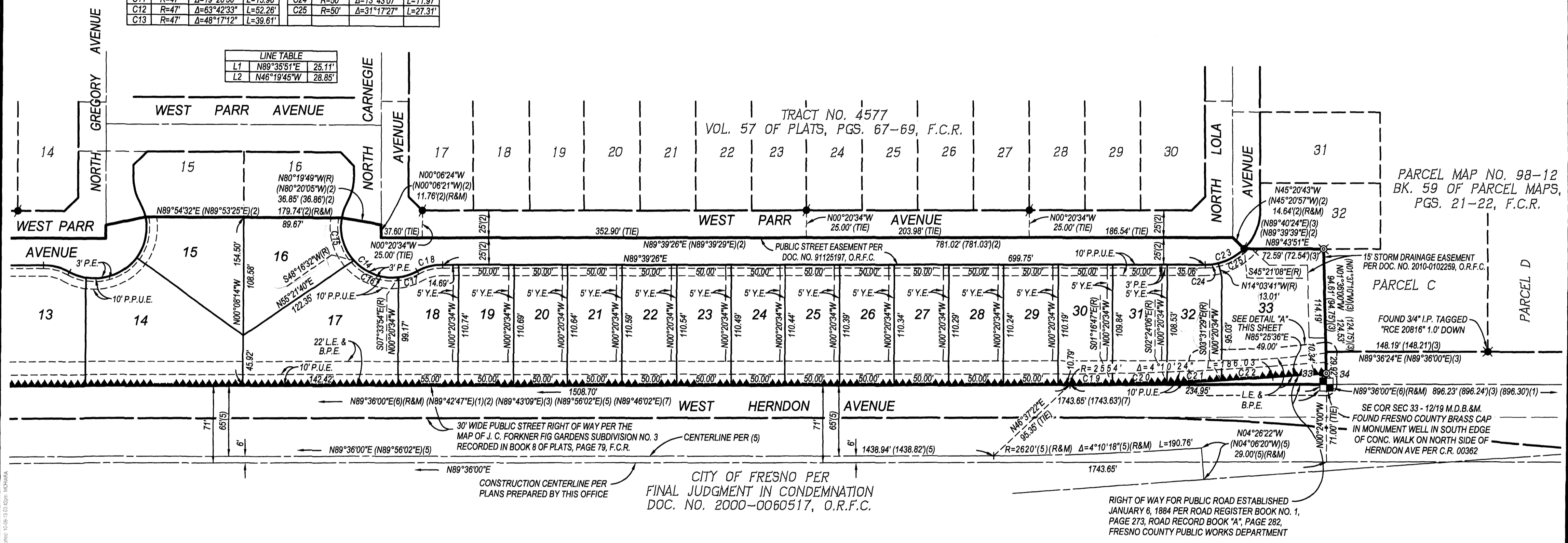
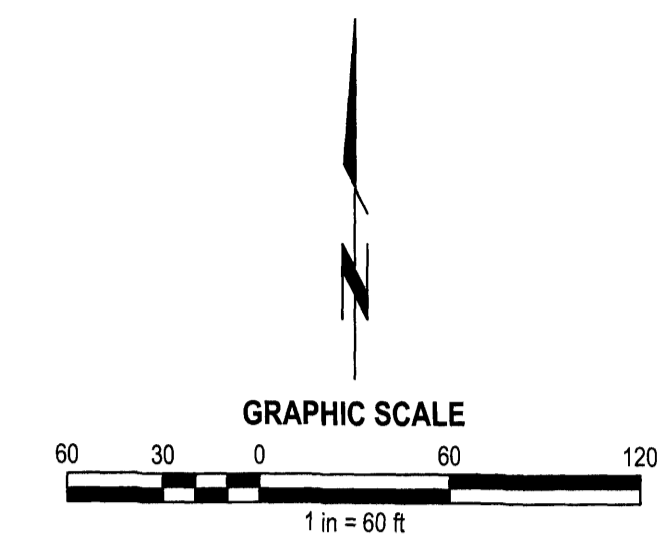
NOTE

- SEE SHEET 2 FOR NOTES, LEGEND AND BASIS OF BEARINGS

**FINAL MAP OF
TRACT NO. 5914
A PLANNED DEVELOPMENT
BEING A SUBDIVISION OF A PORTION OF
THE "REMAINDER" OF TRACT NO. 4577
IN THE CITY OF FRESNO, FRESNO COUNTY, CALIFORNIA
SURVEYED AND PLATTED IN OCTOBER, 2013
BY MORTON & PITALO, INC.
CONSISTING OF 5 SHEETS
SHEET 4 OF 5 SHEETS**

CURVE TABLE							
C1	R=47'	Δ=116°49'04"	L=95.83'	C14	R=47'	Δ=129°07'22"	L=105.92'
C2	R=48'	Δ=29°06'37"	L=24.39'	C15	R=47'	Δ=51°23'39"	L=42.16'
C3	R=47'	Δ=78°42'42"	L=64.57'	C16	R=47'	Δ=65°50'28"	L=45.81'
C4	R=47'	Δ=38°06'22"	L=31.26'	C17	R=47'	Δ=21°53'17"	L=17.95'
C5	R=2661'	Δ=1°51'51"	L=86.58'	C18	R=48'	Δ=29°06'37"	L=24.39'
C6	R=80'	Δ=11°42'02"	L=16.34'	C19	R=2554'	Δ=0°52'47"	L=39.21'
C7	R=100'	Δ=12°30'57"	L=21.84'	C20	R=2554'	Δ=01°07'19"	L=50.01'
C8	R=2665'	Δ=3°24'52"	L=158.82'	C21	R=2554'	Δ=01°07'23"	L=50.06'
C9	R=48'	Δ=29°06'37"	L=24.39'	C22	R=2554'	Δ=01°02'55"	L=46.75'
C10	R=47'	Δ=131°28'35"	L=107.85'	C23	R=50'	Δ=45°00'34"	L=39.28'
C11	R=47'	Δ=19°28'50"	L=15.98'	C24	R=50'	Δ=13°43'07"	L=11.97'
C12	R=47'	Δ=63°42'33"	L=52.26'	C25	R=50'	Δ=31°17'27"	L=27.31'
C13	R=47'	Δ=48°17'12"	L=39.61'				

LINE TABLE		
L1	N89°35'51"E	25.11'
L2	N46°19'45"W	28.85'



NOTE
1. SEE SHEET 2 FOR NOTES, LEGEND AND BASIS OF BEARINGS

FINAL MAP OF TRACT NO. 5914
A PLANNED DEVELOPMENT
BEING A SUBDIVISION OF A PORTION OF THE "REMAINDER" OF TRACT NO. 4577
IN THE CITY OF FRESNO, FRESNO COUNTY, CALIFORNIA
SURVEYED AND PLATTED IN OCTOBER, 2013
BY **MORTON & PITALO, INC.**
CONSISTING OF 5 SHEETS
SHEET 5 OF 5 SHEETS