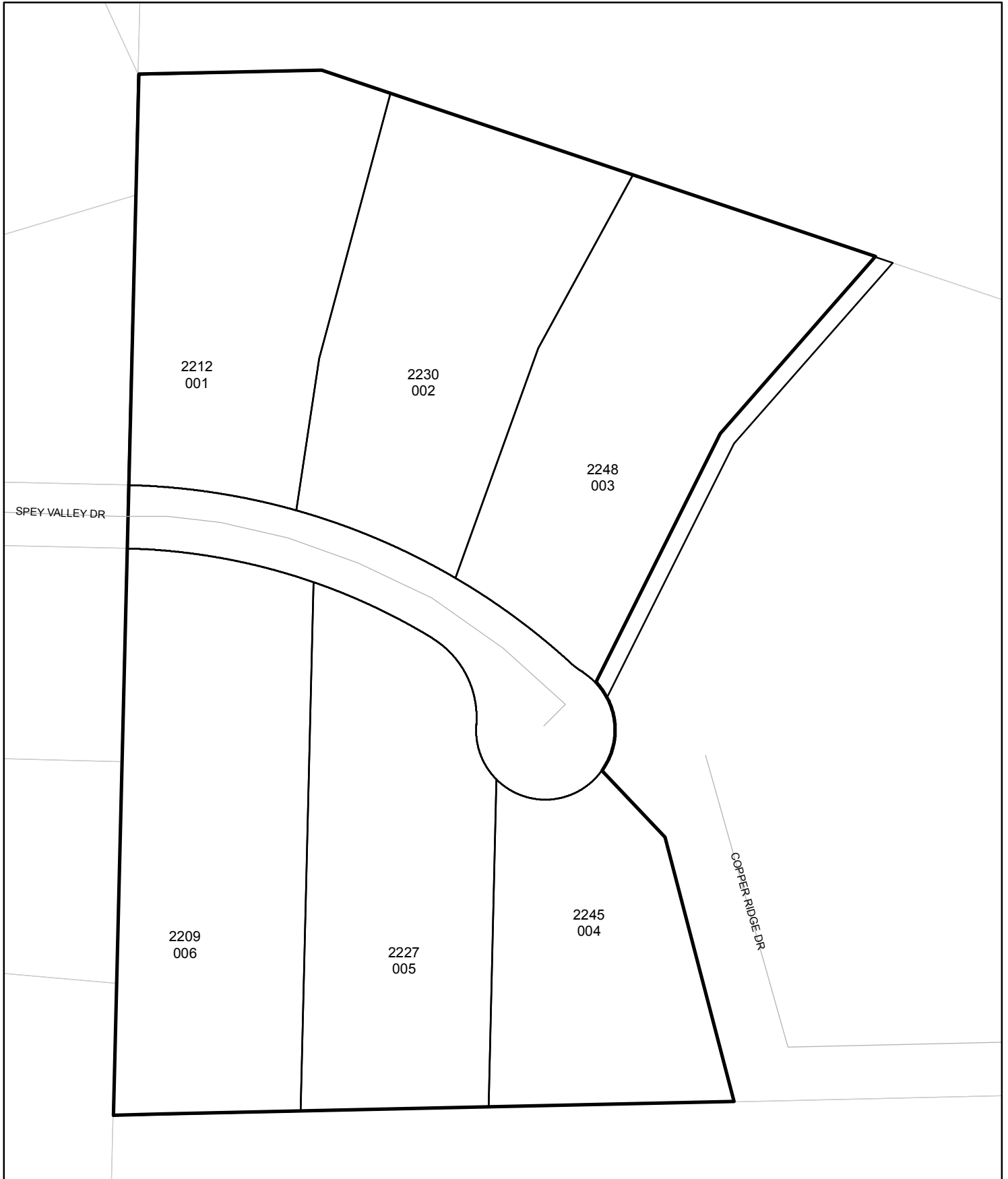




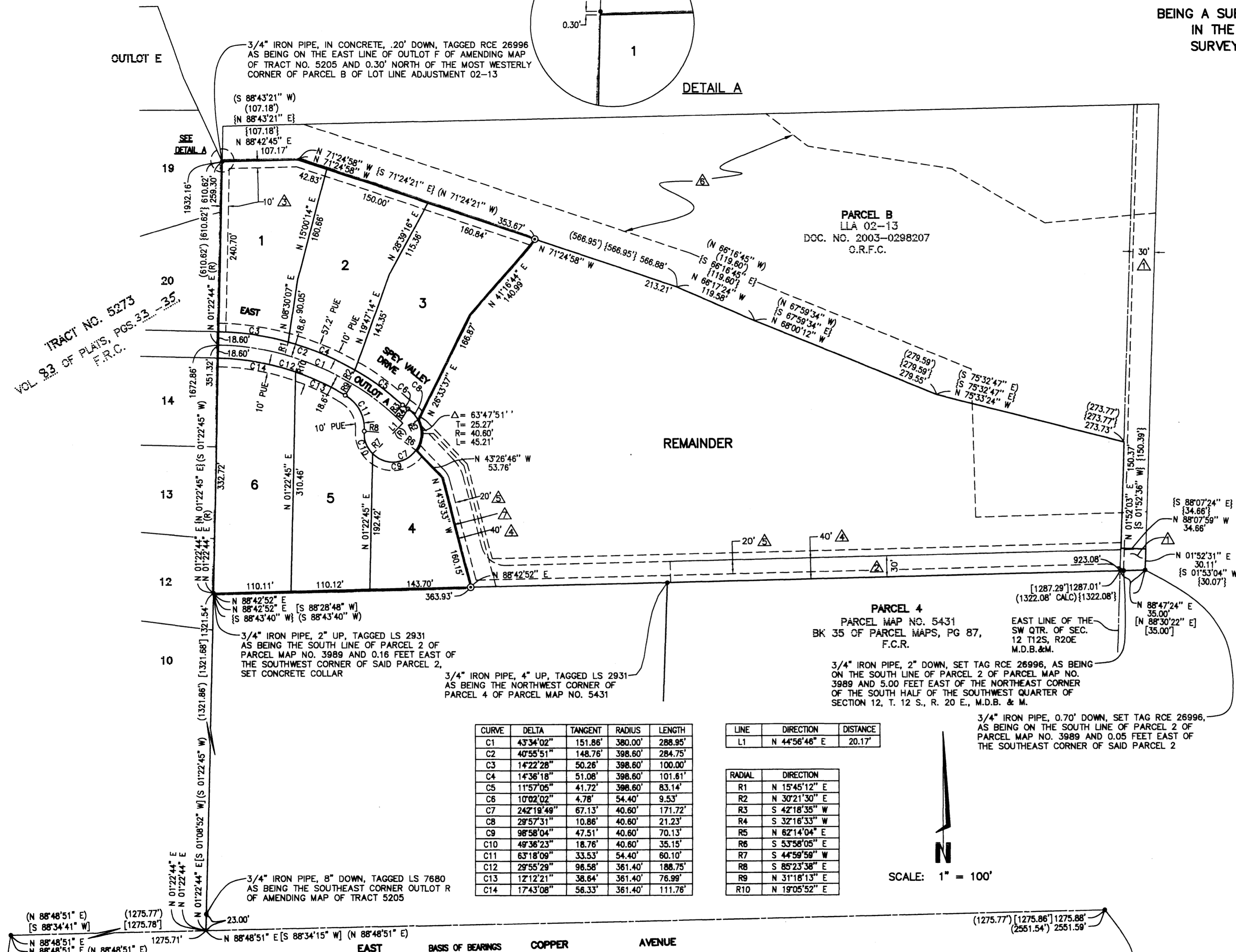
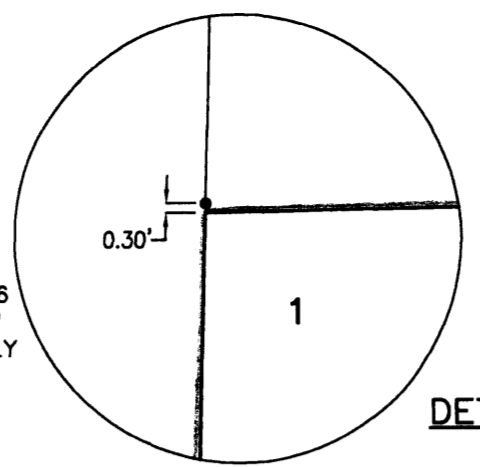
Street Names, Addresses and (Lot Numbers) for T5903

Prepared on Mon Oct 22 13:50:01 2018



TRACT NO. 5903

A PLANNED UNIT DEVELOPMENT
 BEING A SUBDIVISION OF A PORTION OF PARCEL 2 OF PARCEL MAP NO. 3989
 IN THE CITY OF FRESNO, COUNTY OF FRESNO, STATE OF CALIFORNIA
 SURVEYED AND PLATTED IN FEBRUARY 2009, BY GARY G. GIANNETTA
CONSISTING OF TWO SHEETS
SHEET TWO OF TWO SHEETS



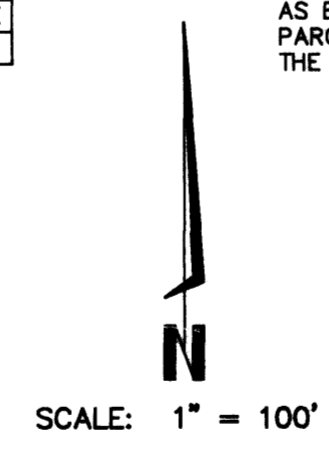
BASIS OF BEARINGS
 THE SOUTH LINE OF THE SOUTHWEST QUARTER OF SECTION 12, TOWNSHIP 12 SOUTH, RANGE 20 EAST, MOUNT DIABLO BASE AND MERIDIAN, TAKEN AS BEARING N 88°48'51" E AS PER AMENDING MAP OF TRACT 5205 RECORDED IN VOLUME 76, PAGES 46 THROUGH 70 OF PLATS, FRESNO COUNTY RECORDS.

- LEGEND:**
- MONUMENT FOUND AND ACCEPTED AS NOTED
 - SET 3/4" IRON PIPE, 30" LONG, 6" DOWN BELOW GROUND, TAGGED R.C.E. 26996
 - ⊙ SET 3/4" IRON PIPE, 30" LONG, 4" UP IN 6" DIAMETER x 30" P.C.C. MONUMENT, DOWN 6" BELOW GROUND, TAGGED R.C.E. 26996
 - () RECORD DATA AS PER AMENDING MAP OF TRACT 5205, RECORDED IN VOLUME 76, PAGES 46 THROUGH 70 OF PLATS, F.C.R.
 - [] RECORD DATA AS PER PARCEL MAP NO. 3989, RECORDED IN BOOK 27, PAGES 95 AND 96 OF PARCEL MAPS, F.C.R.
 - { } RECORD DATA AS PER GRANT DEED RECORDED DECEMBER 16, 2003 AS DOCUMENT NO. 2003-0298207, F.C.R.
 - △ PACIFIC TELEPHONE AND TELEGRAPH COMPANY EASEMENT RECORDED FEBRUARY 4, 1982 IN BOOK 7855, PAGE 476 AS DOCUMENT NO. 10194 OF OFFICIAL RECORDS
 - △ EASEMENT FOR INGRESS AND EGRESS AND INCIDENTAL PURPOSES, RECORDED AUGUST 4, 1980 IN BOOK 7559, PAGE 600 AS DOCUMENT NO. 72222 OF OFFICIAL RECORDS
 - △ FUTURE CONVEYANCE OF EASEMENT COVENANT AS SHOWN ON DOCUMENT RECORDED SEPT. 3, 2013 AS DOCUMENT NO. 2013-0125271, FRESNO COUNTY RECORDS
 - △ SEWER AND WATER EASEMENT AS SHOWN ON DOCUMENT RECORDED AUGUST 7, 2013 AS DOCUMENT NO. 2013-011697, FRESNO COUNTY RECORDS
 - △ EMERGENCY VEHICLE ACCESS EASEMENT AS SHOWN ON DOCUMENT RECORDED SEPT. 3, 2013 AS DOCUMENT NO. 2013-0125259, FRESNO COUNTY RECORDS
 - △ FRESNO METROPOLITAN FLOOD CONTROL EASEMENT FOR THE PERPETUAL AND EXCLUSIVE RIGHT AND EASEMENT TO CONSTRUCT, RECONSTRUCT, INSTALL, CONDUCT WATER THROUGH, OPERATE, MAINTAIN AND REPAIR A PIPELINE, CHANNEL, DITCH OR OTHER STRUCTURE TO CONVEY WATER, TOGETHER WITH ALL RIGHTS NECESSARY, CONVEYMENT OR INCIDENTAL THERETO INCLUDING THE RIGHT OF INGRESS TO AND EGRESS FROM AND INCIDENTAL PURPOSES, RECORDED APRIL 23, 1996 AS DOCUMENT NO. 96051722 OF OFFICIAL RECORDS.
 - △ COVENANT FOR DRAINAGE EASEMENT PURPOSES PREVIOUSLY RECORDED MARCH 5, 2012 AS DOCUMENT NO. 2012-0031537, FRESNO COUNTY RECORDS.
 - PUE PUBLIC UTILITY EASEMENT PREVIOUSLY DEDICATED PER DOCUMENT RECORDED AUGUST 7, 2013 AS DOCUMENT NO. 2013-0111698, F.C.R.
 - F.C.R. FRESNO COUNTY RECORDS
 - (CALC) CALCULATED FROM RECORD DATA
 - (R) DENOTES RADIAL BEARING
 - BLUE BORDER INDICATES THE LIMITS OF THIS SUBDIVISION

CURVE	DELTA	TANGENT	RADIUS	LENGTH
C1	43°34'02"	151.86'	380.00'	288.95'
C2	40°55'51"	148.76'	398.60'	284.75'
C3	14°22'28"	50.26'	398.60'	100.00'
C4	14°36'18"	51.08'	398.60'	101.61'
C5	11°57'06"	41.72'	398.60'	83.14'
C6	10°02'02"	4.78'	54.40'	9.53'
C7	242°19'49"	67.13'	40.60'	171.72'
C8	29°57'31"	10.86'	40.60'	21.23'
C9	98°58'04"	47.51'	40.60'	70.13'
C10	49°36'23"	18.76'	40.60'	35.15'
C11	63°18'09"	33.53'	54.40'	60.10'
C12	29°55'29"	96.58'	361.40'	188.75'
C13	12°12'21"	38.64'	361.40'	76.99'
C14	17°43'08"	56.33'	361.40'	111.76'

LINE	DIRECTION	DISTANCE
L1	N 44°56'48" E	20.17'

RADIAL	DIRECTION
R1	N 15°45'12" E
R2	N 30°21'30" E
R3	S 42°18'35" W
R4	S 32°16'33" W
R5	N 82°14'04" E
R6	S 53°58'05" E
R7	S 44°59'58" W
R8	S 85°23'38" E
R9	N 31°18'13" E
R10	N 19°05'52" E



SCOTT McKAY MONUMENT, 10" DOWN, NOT TAGGED AS BEING THE SOUTHWEST CORNER OF SECTION 12, T 12 S, R 20 E, M.D.B. & M. CONFIRMED WITH RECORD TIES PER CORNER RECORD NO. 5860

1" IRON PIPE, 5" DOWN, TAG NOT LEGIBLE, AS BEING THE SOUTH QUARTER CORNER OF SECTION 12, T 12 S, R 20 E, M.D.B. & M. CONFIRMED WITH RECORD TIES PER CORNER RECORD NO. 1686

- NOTE:**
1. SET 3/4" IRON PIPE, 6" DOWN, TAGGED RCE 26996 AT ALL LOT CORNERS, BLOCK CORNERS, ANGLE POINTS AND CURVE POINTS
 2. OUTLOT A NOW OFFERED FOR DEDICATION FOR PUBLIC UTILITY EASEMENT PURPOSES
 3. OUTLOT A FOR PRIVATE ACCESS AND LANDSCAPING PURPOSES
 4. THE REMAINDER SHALL REQUIRE A CERTIFICATE OF COMPLIANCE OR CONDITIONAL CERTIFICATE OF COMPLIANCE, WHICHEVER APPLIES, PRIOR TO THE SALE, LEASE OR FINANCING OF THE REMAINDER PARCEL.