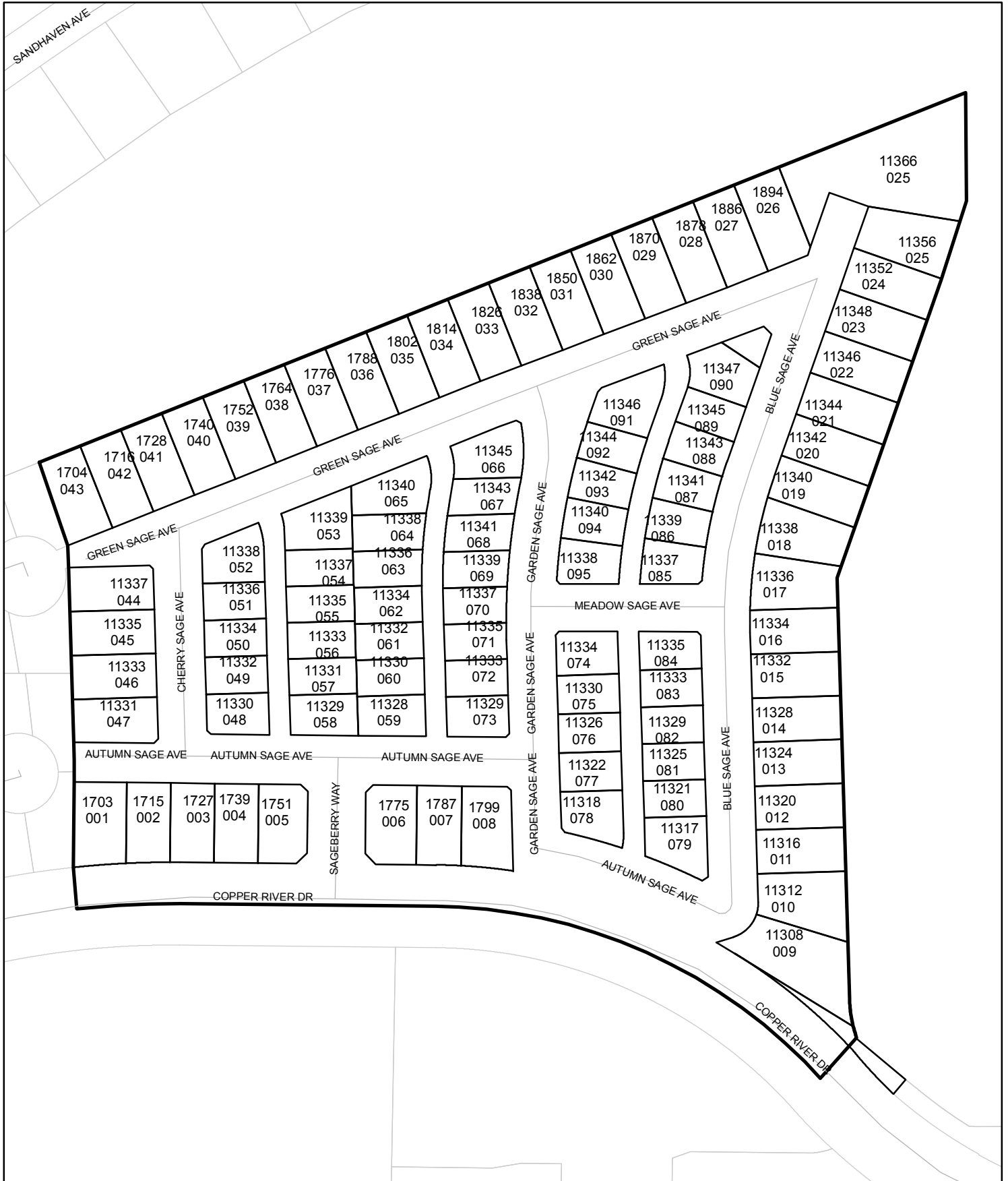




Street Names, Addresses and (Lot Numbers) for T5838

Prepared on Mon Oct 22 13:53:22 2018



LEGEND:

- MONUMENT FOUND AND ACCEPTED AS NOTED
- SET 3/4" IRON PIPE, 30" LONG, 4" UP IN 6" DIAMETER x 30" P.C.C. MONUMENT, DOWN 6" BELOW GROUND, TAGGED R.C.E. 26996
- SET 3/4" IRON PIPE, 30" LONG, 6" DOWN BELOW GROUND, TAGGED R.C.E. 26996
- SET 3/4" IRON PIPE, 30" LONG, 6" BELOW GROUND, TAGGED RCE 26996 AS SHOWN AT 3.00' FROM NEAREST LOT CORNERS. (DISTANCES SHOWN ARE TO TRUE LOT CORNER)
- INDICATES RELINQUISHMENT OF DIRECT ACCESS RIGHTS
- EASEMENT NOW OFFERED FOR DEDICATION FOR PUBLIC STREET PURPOSES FOR PUBLIC USE
- RECORD DATA AS PER AMENDING MAP OF TRACT NO. 5205, RECORDED IN VOLUME 76 OF PLATS, AT PAGES 46 THROUGH 70, FRESNO COUNTY RECORDS
- PREVIOUSLY DEEDED FOR PUBLIC STREET PURPOSES, AS PER AMENDING MAP OF TRACT NO. 5205, RECORDED IN VOLUME 76 OF PLATS, AT PAGES 46 THROUGH 70, F.C.R.
- SURFACE DRAINAGE EASEMENT PREVIOUSLY DEDICATED PER DOCUMENT NO. 2006-0079766, FRESNO COUNTY RECORDS
- PREVIOUSLY DEEDED FOR PEDESTRIAN EASEMENT PURPOSES, AS PER DOC. NO. 2008-0098963, RECORDED JULY 10, 2008, FRESNO COUNTY RECORDS
- CALC. CALCULATED FROM RECORD DATA
- F.C.R. FRESNO COUNTY RECORDS
- PUE PUBLIC UTILITY EASEMENT NOW OFFERED FOR DEDICATION FOR PUBLIC USE
- LE LANDSCAPE EASEMENT NOW OFFERED FOR DEDICATION FOR PUBLIC USE
- PE PEDESTRIAN EASEMENT NOW OFFERED FOR DEDICATION FOR PUBLIC USE
- (R) DENOTES RADIAL BEARING
- O.R.F.C. OFFICIAL RECORDS FRESNO COUNTY
- BLUE BORDER INDICATES THE LIMITS OF THIS SUBDIVISION

NOTE:

- SET 3/4" IRON PIPE, 6" DOWN, TAGGED RCE 26996 AT ALL LOT CORNERS AND ANGLE POINTS
- OUTLOTS A AND B ARE DEDICATED IN FEE TO THE CITY OF FRESNO FOR OPEN SPACE PURPOSES SUBJECT TO CITY ACCEPTANCE OF DEVELOPER INSTALLED REQUIRED IMPROVEMENTS.
- OUTLOTS C IS FOR COMMON AREA OPEN SPACE
- OUTLOT D IS FOR FUTURE DEVELOPMENT
- SEE SH. 3 FOR CURVE, LINE AND RADIAL DATA

BASIS OF BEARINGS

THE SOUTH LINE OF THE SOUTHEAST QUARTER OF SECTION 11, TOWNSHIP 12 SOUTH, RANGE 20 EAST, MOUNT DIABLO BASE AND MERIDIAN, TAKEN AS BEARING S 89°25'01" E, AS PER AMENDING MAP OF TRACT NO. 5205, RECORDED IN VOLUME 76 OF PLATS, PAGES 46 THROUGH 70, FRESNO COUNTY RECORDS.

ESTABLISHED WITH FOUND MONUMENTS ON THE NORTH RIGHT-OF-WAY LINE OF EAST COPPER AVENUE.

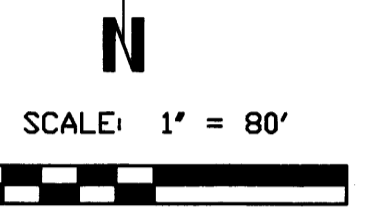
TRACT NO. 5838

PHASE I OF VESTING TENTATIVE MAP NO. 5838
 A PLANNED DEVELOPMENT
 BEING A RE-SUBDIVISION OF OUTLOT V OF THE AMENDING MAP OF TRACT NO. 5205, RECORDED IN VOLUME 76 OF PLATS, PAGES 46 THROUGH 70, FRESNO COUNTY RECORDS
 IN THE CITY OF FRESNO, COUNTY OF FRESNO, STATE OF CALIFORNIA
 SURVEYED AND PLATTED IN SEPTEMBER 2009, BY GARY G. GIANNETTA
 CONSISTING OF THREE SHEETS
 SHEET TWO OF THREE SHEETS

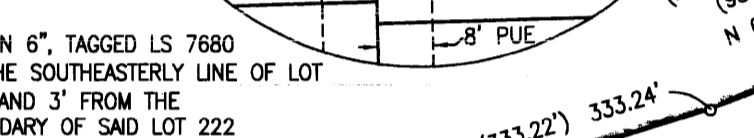
MONUMENTS:

- 3/4" IRON PIPE, DOWN 4", TAGGED LS 7680 AS BEING A 3' OFFSET TO A POINT ON CURVE OF THE 647.00' RADIUS CURVE ON THE SOUTH SIDE OF OUTLOT V OF AMENDING MAP OF TRACT NO. 5205 AND 50.00' FROM THE CENTERLINE OF EAST COPPER RIVER DRIVE
- 3/4" IRON PIPE, DOWN 6" IN CONCRETE, TAGGED LS 7680 AS BEING THE SOUTHEAST CORNER OF THE 22' MULTI PURPOSE TRAIL EASEMENT EAST OF NORTH CEDAR AVENUE SHOWN ON THE AMENDING MAP OF TRACT NO. 5205 AND 23.00' FROM THE CENTERLINE OF EAST COPPER AVENUE
- 3/4" IRON PIPE, DOWN 6", TAGGED LS 7680 AS BEING A 3' OFFSET TO THE BEGINNING OF CURVE OF THE 2017.00' RADIUS CURVE ON THE SOUTH SIDE OF EAST COPPER RIVER DRIVE AS SHOWN ON THE AMENDING MAP OF TRACT NO. 5205 AND 44.00' FROM THE CENTERLINE OF EAST COPPER RIVER DRIVE

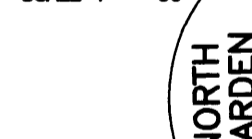
PARCEL D LLA 2005-38
 DCC. NO. 2006-0066877
 O.R.F.C.



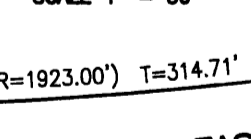
DETAIL A SCALE 1" = 30'



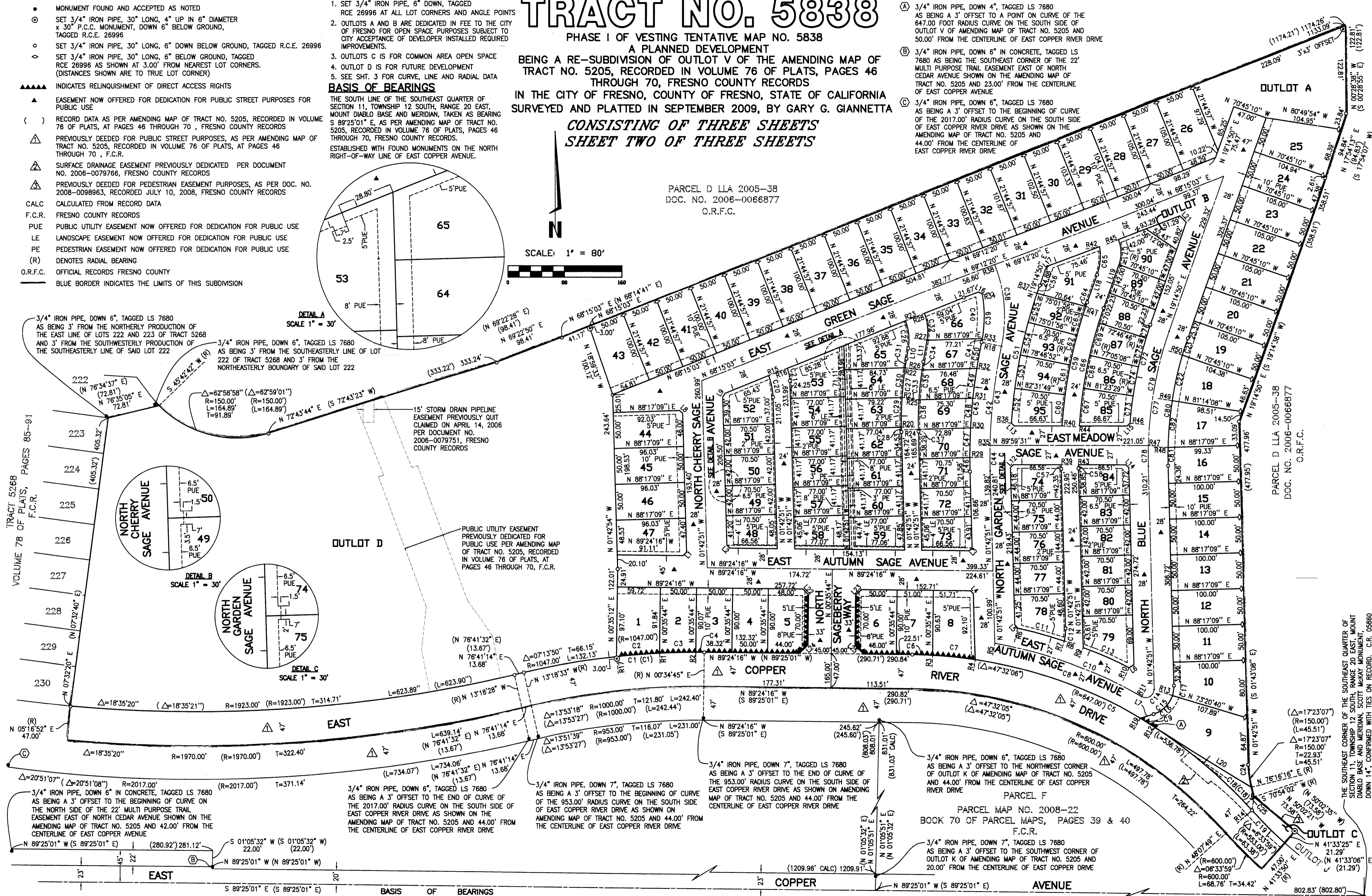
DETAIL B SCALE 1" = 30'



DETAIL C SCALE 1" = 30'



TRACT 5268
 VOLUME 76 OF PLATS, PAGES 85-91
 F.C.R.



THE SOUTHEAST CORNER OF THE SOUTHEAST QUARTER OF SECTION 11, TOWNSHIP 12 SOUTH, RANGE 20 EAST, MOUNT DIABLO BASE AND MERIDIAN, SCOTT MCKAY MONUMENT, DOWN 14", CONFIRMED WITH TIES ON RECORD. C.R. 05860

PARCEL MAP NO. 2008-22
 BOOK 70 OF PARCEL MAPS, PAGES 38 & 40
 F.C.R.