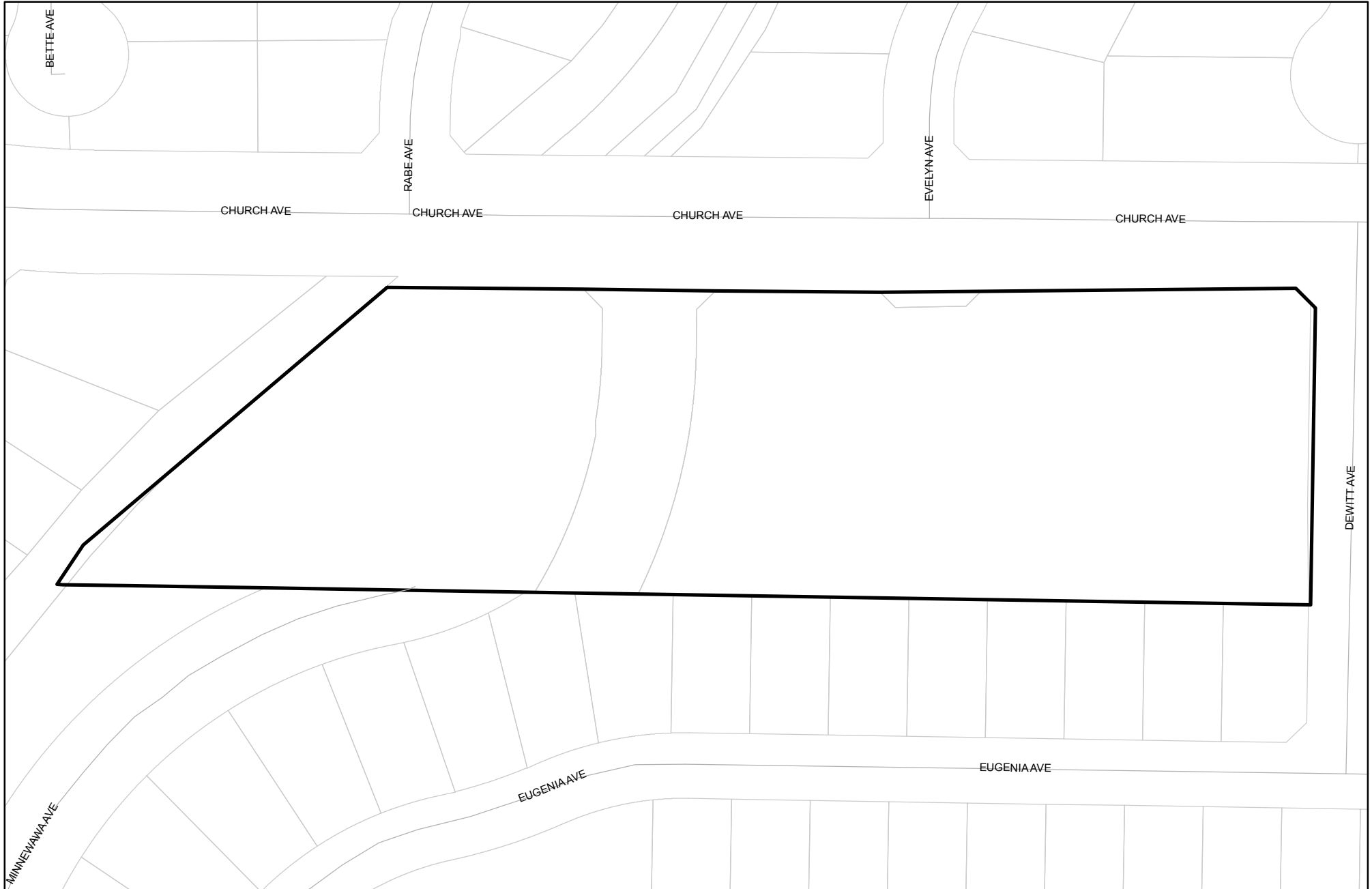




Prepared on Mon Oct 22 13:55:50 2018

Street Names, Addresses and (Lot Numbers) for T5781



FOUND MONUMENTS: (MON-01)

- 20.00' NORTH OF THE SOUTHWEST CORNER OF THE EAST FIVE ACRES OF THE SOUTHWEST QUARTER OF THE SOUTHEAST QUARTER OF THE NORTHEAST QUARTER OF SECTION 36, 12/20, M.D.B. & M., FOUND AND ACCEPTED 3/4" IRON PIPE, DOWN 4", NO TAG
- NORTHEAST CORNER OF SECTION 36, 12/20, M.D.B. & M., ALSO BEING THE NORTHWEST CORNER OF SECTION 31, 12/21, M.D.B. & M., FOUND AND ACCEPTED FRESNO COUNTY BRASS CAP MONUMENT, DOWN 2", "T.F."
- EAST QUARTER CORNER OF SECTION 36, 12/20, M.D.B. & M., ALSO BEING THE WEST QUARTER CORNER OF SECTION 31, 12/21, M.D.B. & M., POSITION ESTABLISHED BY TIES PER FRESNO COUNTY C.R. #6753
- CENTER QUARTER CORNER OF SECTION 36, 12/20, M.D.B. & M., FOUND AND ACCEPTED 3/4" IRON PIPE, DOWN 2", TAGGED LS 5277, C.R. #5490

LINE TABLE

LINE	BEARING	LENGTH
L1	N49°22'19"E	15.46'
L2	N49°22'19"E	155.97'
L3	N49°22'19"E	140.59'
L4	N00°57'59"W	75.03'
L5	N00°33'40"E	154.25'
L6	S45°12'18"E	16.53'
L7	S27°04'06"W	12.26'
L8	S83°16'16"W	12.26'
L9	S40°49'03"E	23.35'
L10	N49°52'50"E	10.22'
L11	N39°45'18"E	43.43'
L12	N47°43'01"E	22.13'
L13	S89°03'09"W	64.58'
L14	N45°20'39"W	18.48'
L15	N89°26'20"W	25.81'
L16	N00°12'52"E	6.30'
L17	N00°12'52"E	19.09'
L18	S44°35'45"W	18.58'
L19	N00°33'40"E	0.60'
L20	N00°33'40"E	5.00'
L21	N39°45'18"E	61.50'
L22	N48°17'45"E	82.40'
L23	N89°47'08"W	29.94'
L24	N48°17'45"E	104.95'
L25	S89°47'08"E	25.00'
L26	N34°49'49"W	35.00'

CURVE TABLE

CURVE	RADIUS	LENGTH	DELTA
C1	1200.00'	192.17'	9°10'32"
C2	435.00'	86.58'	11°24'16"
C3	215.00'	28.64'	7°37'55"
C4	50.00'	61.74'	70°45'15"
C5	50.00'	67.01'	76°47'06"
C6	50.00'	128.75'	147°32'21"
C7	215.00'	27.70'	7°22'51"
C8	10.00'	3.47'	19°51'59"
C9	30.00'	8.72'	16°39'35"
C10	213.00'	81.60'	21°56'59"
C11	285.00'	71.69'	14°24'42"
C12	285.00'	84.69'	17°01'33"
C13	285.00'	102.70'	20°38'50"
C14	285.00'	259.08'	52°05'05"
C15	50.00'	78.84'	90°20'48"
C16	50.00'	96.55'	110°38'20"
C17	50.00'	34.05'	39°00'52"
C18	50.00'	209.44'	240°00'00"
C19	50.00'	52.36'	60°00'00"
C20	250.00'	71.92'	16°28'57"
C21	250.00'	233.14'	53°25'54"
C22	250.00'	305.06'	69°54'51"

RADIAL TABLE

RADIAL	BEARING
R1	N49°48'18"W
R2	N22°43'33"W
R3	S18°57'12"E
R4	S71°24'00"W
R5	N38°56'21"E
R6	S50°42'27"E
R7	S83°14'41"E
R8	S88°15'43"E
R9	S18°20'52"E
R10	S33°21'22"E
R11	S54°00'08"E
R12	S71°01'41"E
R13	S85°26'23"E
R14	N68°48'00"W

MAP OF TRACT NO. 5781

**IN THE CITY OF FRESNO
FRESNO COUNTY, CALIFORNIA**

**SURVEYED AND PLATTED IN MAY, 2005
BY INGELS - BRAUN & ASSOCIATES**

**CONSISTING OF 2 SHEETS
SHEET 2 OF 2**

SEE SHEET TWO FOR LINE,
CURVE, AND RADIAL TABLES

BASIS OF BEARINGS

THE EAST LINE OF THE NORTHEAST QUARTER OF SECTION 17, T.14 S., R.21 E., M.D.B. & M. WAS TAKEN TO BE S 00°00'58" E, PER TRACT NO. 5258, RECORDED IN VOLUME 73 OF PLATS AT PAGES 1 THROUGH 5, FRESNO COUNTY RECORDS.

LEGEND

- EXISTING MONUMENT FOUND AND ACCEPTED OR AS NOTED.
- ⊙ FOUND 1" O.D. IRON PIPE, UP 4", IN 6" DIA. CONCRETE MONUMENT TAGGED PLS 6619, OR AS OTHERWISE NOTED.
- ⊙ SET 1" O.D. IRON PIPE, 30" LONG, UP 4", IN 6" DIA. x 30" CONCRETE MONUMENT DOWN 6" AND TAGGED PLS 6619, EXCEPT AS NOTED.
- (...) RECORD DATA PER TRACT NO. 5258, RECORDED IN VOLUME ___ OF PLATS AT PAGES ___ THROUGH ___, FRESNO COUNTY RECORDS.
- [...] RECORD DATA PER INSTRUMENT NO. 91038434 RECORDED IN VOLUME 07 OF PRECISE PLAN LINES AT PAGES 64 THROUGH 70, FRESNO COUNTY RECORDS.
- C.R. CORNER RECORD ON FILE WITH FRESNO COUNTY SURVEYOR.
- F.C.R. FRESNO COUNTY RECORDS
- LE LANDSCAPE EASEMENT NOW OFFERED FOR DEDICATION FOR PUBLIC USE.
- O.R.F.C. OFFICIAL RECORDS FRESNO COUNTY
- PE PEDESTRIAN EASEMENT NOW OFFERED FOR DEDICATION FOR PUBLIC USE.
- PUE PUBLIC UTILITY EASEMENT NOW OFFERED FOR DEDICATION FOR PUBLIC USE.
- PPUE PLANTING AND PUBLIC UTILITY EASEMENT NOW OFFERED FOR DEDICATION FOR PUBLIC USE.
- (R) DENOTES RADIAL BEARING
- ▲▲▲ INDICATES RELINQUISHMENT OF DIRECT ACCESS RIGHTS.
- BLUE BORDER INDICATES THE LIMITS OF THIS SUBDIVISION.
- △ INDICATES PORTIONS NOW OFFERED FOR DEDICATION FOR PUBLIC STREET AND UTILITY PURPOSES.
- PORTIONS PREVIOUSLY DEEDED TO THE CITY OF FRESNO FOR PUBLIC STREET PURPOSES PER DEED RECORDED JUNE 15, 2005, AS DOCUMENT NO. 2005-0132585, O.R.F.C.
- ① AN EASEMENT IN FAVOR OF THE CITY OF FRESNO FOR SEWER LINE AND INCIDENTAL PURPOSES PER DOCUMENT PREVIOUSLY RECORDED DECEMBER 23, 1992, AS DOCUMENT NO. 92192352, O.R.F.C.
- ② AN EASEMENT PREVIOUSLY DEEDED TO THE CITY OF FRESNO FOR WATER MAIN PURPOSES PER DEED RECORDED FEBRUARY 23, 1996, AS DOCUMENT NO. 96023597, O.R.F.C.
- ③ AN EASEMENT PREVIOUSLY DEEDED TO THE CITY OF FRESNO FOR PUBLIC UTILITY PURPOSES PER DEED RECORDED MARCH 18, 1997, AS DOCUMENT NO. 97035404, O.R.F.C.
- ④ AN EASEMENT PREVIOUSLY DEEDED TO FRESNO IRRIGATION DISTRICT FOR PIPELINES AND OTHER CONDUITS AND INCIDENTAL PURPOSES PER DEED RECORDED JANUARY 13, 2005, AS DOCUMENT NO. 2005-0009131, O.R.F.C.

NOTE :

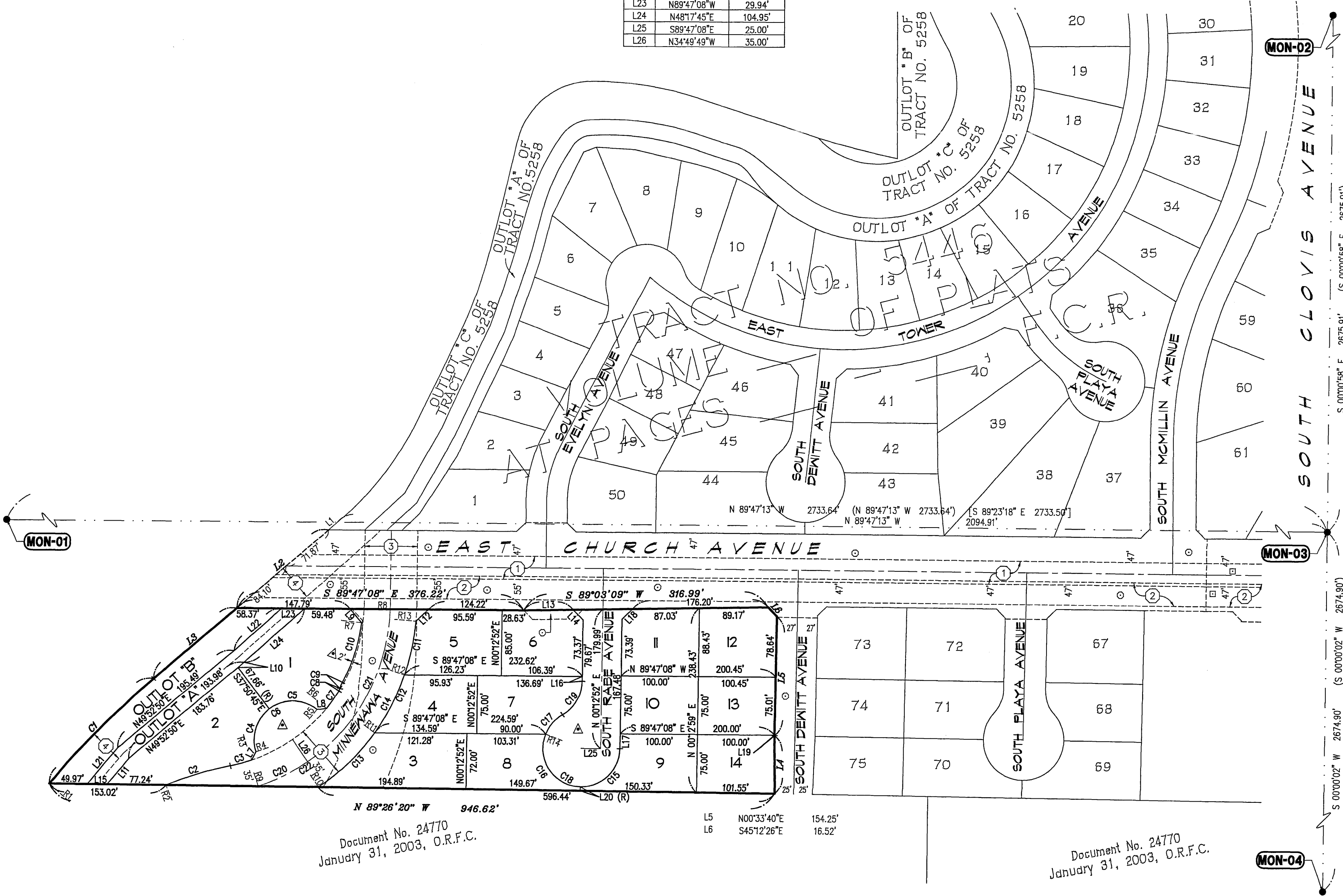
1" O.D. x 30" LONG IRON PIPE TO BE SET 6" DOWN AND TAGGED PLS-6619, AT ALL LOT CORNERS, ANGLE POINTS, BEGINNING OF CURVES AND END OF CURVES, OR AS NOTED WITHIN THE TIME SPECIFIED IN THE SUBDIVISION AGREEMENT FOR THIS TRACT.

OUTLOT "A" TO BE DEEDED TO THE CITY OF FRESNO.

SCALE 1" = 100'

REVISIONS

BY: MCBRIEN -06/30/06
IBA CADFILE: 06033FM



Document No. 24770
January 31, 2003, O.R.F.C.

Document No. 24770
January 31, 2003, O.R.F.C.

MON-01

MON-03

MON-04