

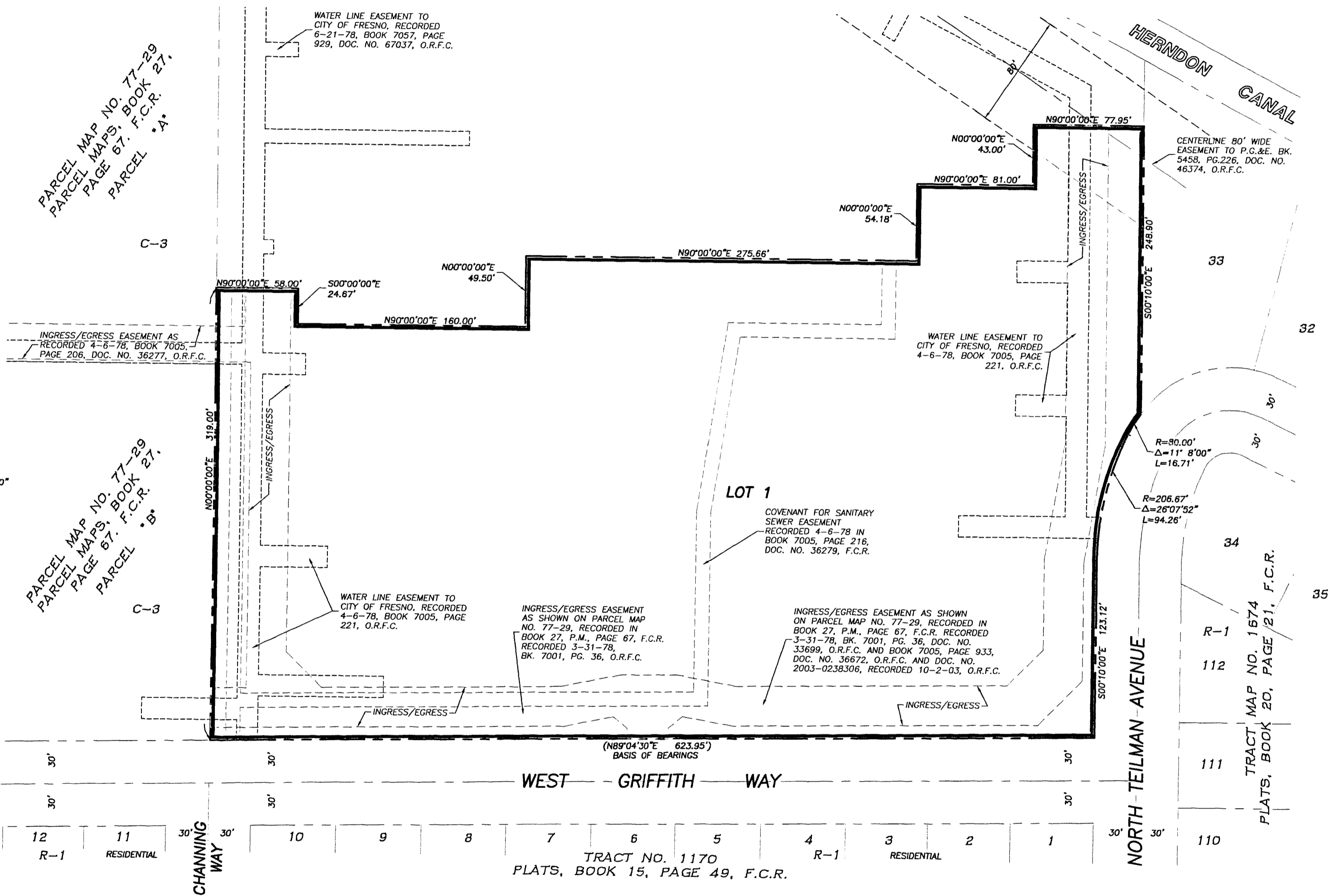


Prepared on Tue Apr 02 13:33:19 2013

Street Names, Addresses and (Lot Numbers) for T5742



FINAL MAP OF
TRACT NO. 5742
 FOR CONDOMINIUM PURPOSES
 SHEET TWO OF TWO SHEETS
 IN THE CITY OF FRESNO, FRESNO COUNTY, CALIFORNIA
 SURVEYED AND PLATTED APRIL, 2006 BY RABE ENGINEERING INC.
 CIVIL ENGINEERS-LAND SURVEYORS 2021 N. GATEWAY BLVD., FRESNO CALIFORNIA 93727
 (559) 252-7223



LEGEND

- MONUMENT FOUND AND ACCEPTED AS NOTED
- ⊙ SET 3/4"x30" I.P., UP 4" IN 6" DIAMETER X 30" P.C.C. MONUMENT, DOWN 6", TAGGED
- () RECORD DATA PER PARCEL MAP NO. 77-29, PARCEL MAPS BOOK 27, PAGE 67, F.C.R.
- C.R. CORNER RECORD ON FILE WITH FRESNO COUNTY SURVEYOR
- BLUE BORDER INDICATES LIMITS OF THIS SUBDIVISION.
- F.C.R. FRESNO COUNTY RECORDS
- O.R.F.C. OFFICIAL RECORDS FRESNO COUNTY
- - - - - INGRESS/EGRESS EASEMENT AS NOTED
- - - - - WATER LINE EASEMENT AS NOTED
- - - - - SANITARY SEWER EASEMENT AS NOTED

BASIS OF BEARINGS

THE SOUTH LINE OF PARCEL 'D' OF PARCEL MAP NO. 77-29 (ALSO BEING THE NORTH LINE OF WEST GRIFFITH WAY) IS TAKEN TO BE N89°04'30"E, AS SHOWN ON THE MAP RECORDED IN BOOK 27 OF PARCEL MAPS AT PAGE 67, FRESNO COUNTY RECORDS.

