



Street Names, Addresses and (Lot Numbers) for T5730

Prepared on Mon Oct 22 13:57:23 2018



FINAL MAP OF TRACT NO. 5730

BEING A MERGER AND RESUBDIVISION OF THE REMAINDER OF TRACT NO. 5352
RECORDED IN VOLUME 77 OF PLATS, AT PAGES 59-62 F.C.R.

MAPLE RUN ADDITION IN THE CITY OF FRESNO, COUNTY OF FRESNO, STATE OF CALIFORNIA

SURVEYED AND PLATTED IN AUGUST 2006
BY QUAD KNOFF INC.

LEGEND

- ▲ MONUMENT FOUND AND ACCEPTED AS DESCRIBED
- △ MONUMENT'S POSITION ESTABLISHED AS DESCRIBED
- FOUND AND ACCEPTED 3/4" IRON PIPE TAGGED PLS 7985, 4" UP IN P.C.C. 6" DIA. MONUMENT, PER R1
- FOUND AND ACCEPTED 3/4" IRON PIPE TAGGED PLS 7985, 6" BELOW SURFACE, PER R1
- ⊙ SET 3/4" IRON PIPE TAGGED PLS 4714, 4" UP IN P.C.C. 6" DIA. MONUMENT
- FOUND BRASS TAG STAMPED PLS 7985, PER R1
- SET NAIL AND BRASS TAG STAMPED PLS 4714, IN CONCRETE AT LOT CORNER AS SHOWN
- ▣ FOUND AND ACCEPTED 3/4" IRON PIPE TAGGED PLS 7985, FLUSH, PER R1
- ◆ SET WITNESS CORNER 3/4" X 30" IRON PIPE TAGGED PLS 4714, 6" BELOW SURFACE ON LOT LINE AS SHOWN AT 3.00' OFFSET FROM NEAREST LOT CORNER (DISTANCES ARE SHOWN TO TRUE CORNER).
- ◇ SET WITNESS CORNER NAIL AND BRASS TAG STAMPED PLS 4714, IN FOOTING ON LOT LINE AS SHOWN AT 3.00' OFFSET FROM NEAREST LOT CORNER (DISTANCES ARE SHOWN TO TRUE CORNER).
- (R) RADIAL BEARING
- O.R.F.C. OFFICIAL RECORDS OF FRESNO COUNTY
- F.C.R. FRESNO COUNTY RECORDS
- BLUE BORDER INDICATES LIMITS OF SUBDIVISION
- PE PEDESTRIAN EASEMENT NOW OFFERED FOR DEDICATION FOR PUBLIC USE
- ☒ INDICATES AREA OF PUBLIC STREET EASEMENT TO THE CITY OF FRESNO RECORDED AUGUST 25, 2006 AS DOCUMENT NO. 2006-0179097 O.R.F.C.
- ☑ INDICATES AREA OF PUBLIC STREET EASEMENT TO THE CITY OF FRESNO RECORDED NOVEMBER 20, 2006 AS DOCUMENT NO. 2006-0245051 O.R.F.C.
- * INDICATES AREA DEDICATED TO THE CITY OF FRESNO FOR PUBLIC STREET AND UTILITY PURPOSES PER MAP OF TRACT NO. 5352 RECORDED IN VOL. 77 OF PLATS, AT PAGES 59-62, F.C.R.
- ▲▲▲▲ RELINQUISHMENT OF DIRECT ACCESS RIGHTS
- LE LANDSCAPE EASEMENT NOW OFFERED FOR DEDICATION FOR PUBLIC USE
- PPUE PLANTING AND PUBLIC UTILITY EASEMENT NOW OFFERED FOR DEDICATION FOR PUBLIC USE
- PUE PUBLIC UTILITY EASEMENT NOW OFFERED FOR DEDICATION FOR PUBLIC USE
- R1 MEASURED AND RECORD DATA PER MAP OF TRACT No. 5352 RECORDED IN VOLUME 77 OF PLATS AT PAGES 59-62, FRESNO COUNTY RECORDS, OR CALCULATED THEREFROM.
- (F.I.D.) INDICATES COMMON USE AGREEMENT FOR TRAIL PURPOSES PER DOCUMENT NO. 2006-0010656, O.R.F.C., AND TO THE FRESNO IRRIGATION DISTRICT FOR IRRIGATION PIPELINE PURPOSES PER DOCUMENT NO. 2005-0287685, O.R.F.C.
- ▽ PEDESTRIAN TRAIL EASEMENT NOW OFFERED FOR DEDICATION FOR PUBLIC USE.
- [F.I.D.] EASEMENT GRANTED TO THE FRESNO IRRIGATION DISTRICT FOR IRRIGATION PIPELINE PURPOSES, RECORDED MAY 31, 2006 AS DOCUMENT NO. 2006-0113706, O.R.F.C.
- PEDESTRIAN TRAIL EASEMENT LINE

LINE	BEARING
R-1	N00°01'28"E
R-2	N27°17'25"E
R-3	S21°11'01"W
R-4	S29°57'13"E
R-5	S80°39'07"E
R-6	S89°57'17"E
R-7	N36°17'04"E

CURVE	DELTA	RADIUS	LENGTH
C1	36°15'36"	45.00	28.48
(C2 R1)	27°15'57"	45.00	21.41
C3	6°06'24"	45.00	4.80
C4	51°08'14"	45.00	40.16
C5	50°41'54"	45.00	39.82
(C6 R1)	107°56'32"	45.00	84.78
C7	53°45'39"	45.00	42.22
C8	90°01'15"	45.00	70.70

LINE	BEARING	LENGTH
L1	N45°00'11"W	17.44
(L2 R1)	N44°15'27"E	16.48
L3	N44°24'18"E	17.65
L4	N45°01'45"E	17.46
L5	N44°57'57"W	17.45
(L6 R1)	N45°36'40"W	17.26
L7	N89°58'32"W	11.52
L8	N44°58'16"W	17.46
(L9 R1)	N45°01'32"E	17.46
(L10 R1)	N89°56'55"E	22.97
(L11 R1)	N44°57'55"W	14.14
L12	N45°02'05"E	28.29
(L13 R1)	S25°34'54"E	72.35
L14	N20°10'49"E	20.64

THIS PROPERTY IS SUBJECT TO THE FOLLOWING:

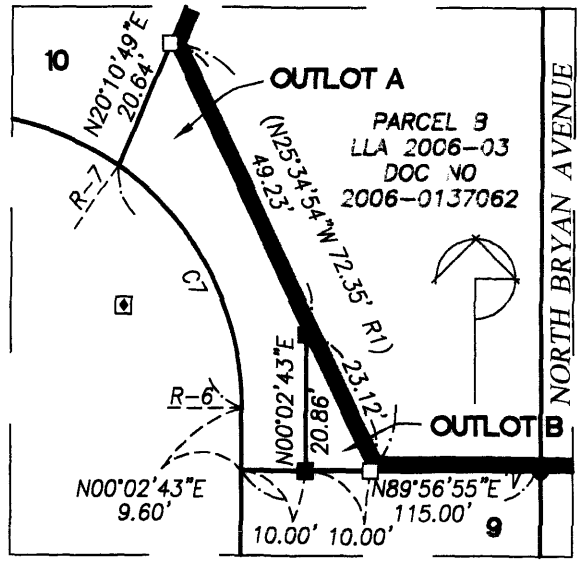
- (CONTINUED FROM SHEET 1 OF 2)
- A SUBDIVISION AGREEMENT FOR THE FINAL MAP OF TRACT NO. 5730, RECORDED Dec 12, 2008, DOCUMENT NO. 2008-017004, FRESNO COUNTY RECORDS.
 - THE TERMS AND PROVISIONS CONTAINED IN THE DOCUMENT ENTITLED "AGREEMENT FOR RELOCATION OF PIPELINE OWNED BY FRESNO IRRIGATION DISTRICT" RECORDED DECEMBER 22, 2005 AS INSTRUMENT NO. 2005-0298986 OF OFFICIAL RECORDS.

BASIS OF BEARINGS

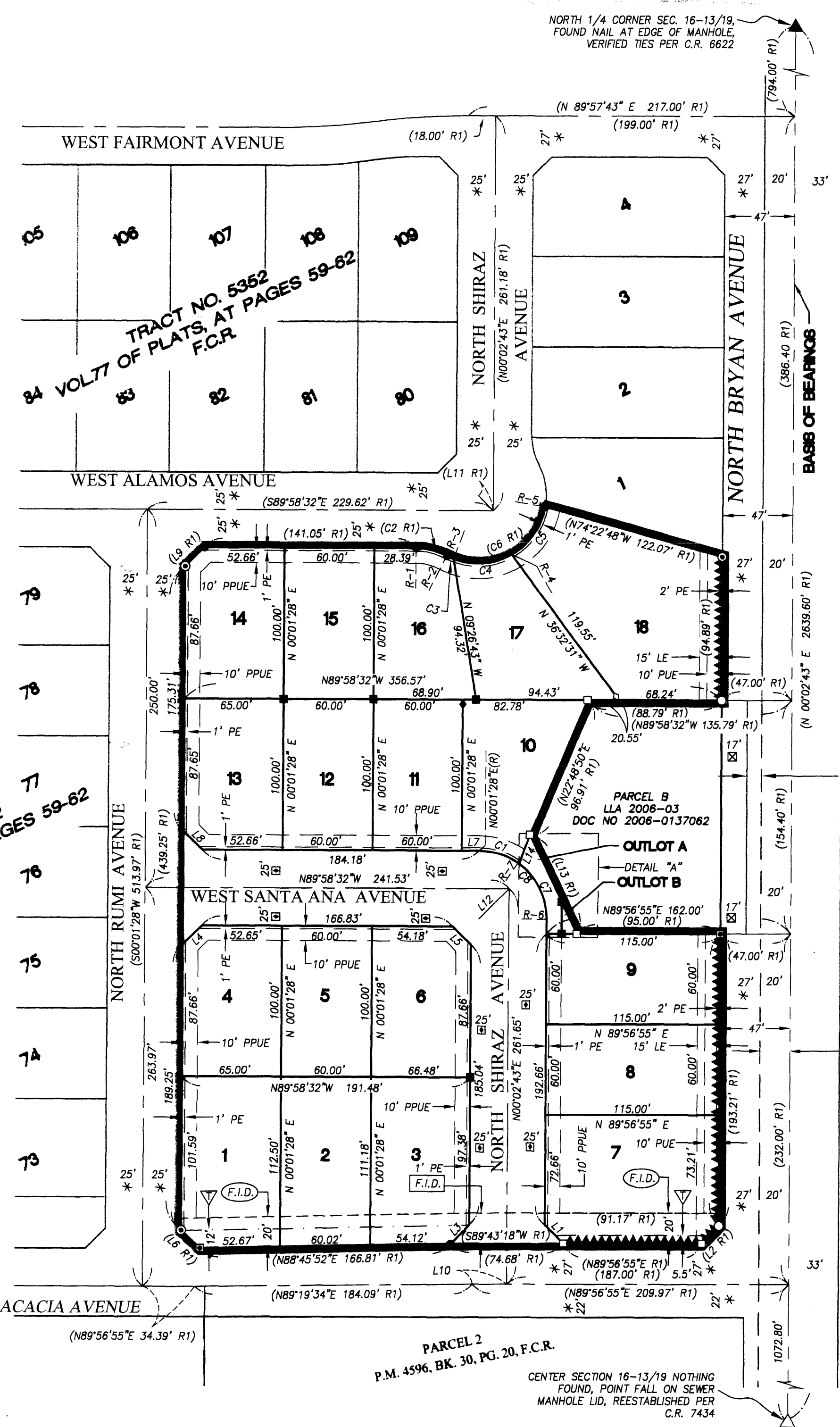
THE EAST LINE OF THE NORTHWEST QUARTER OF SECTION 16, TOWNSHIP 13 SOUTH, RANGE 19 EAST, MOUNT DIABLO BASE AND MERIDIAN, SHOWN TO BEAR NORTH 00°02'43" EAST, PER MAP OF TRACT NO. 5352 RECORDED IN VOL. 77 OF PLATS, AT PAGES 59-62, FRESNO COUNTY RECORDS.

NOTES:

- SET 3/4" BY 30" IRON PIPE, 6" BELOW SURFACE, TAGGED PLS 4714, AT ALL LOT CORNERS, BEGINNING AND ENDING OF CURVES, AND ANGLE POINTS OF RIGHT OF WAY, UNLESS NOTED OTHERWISE.
- OUTLOT A IS DEDICATED IN FEE TO THE CITY OF FRESNO FOR LANDSCAPING AND OPEN SPACE PURPOSES SUBJECT TO CITY ACCEPTANCE OF DEVELOPER INSTALLED REQUIRED IMPROVEMENTS.
- OUTLOT B FOR FUTURE DEVELOPEMENT



TRACT NO. 5352
VOL 77 OF PLATS, AT PAGES 59-62
F.C.R.



10' DEDICATED FOR ROAD PURPOSES PER PARCEL MAP 4596 IN BOOK 30, PAGE 20, F.C.R.

20' ROAD RIGHT OF WAY GRANTED TO THE COUNTY OF FRESNO PER DOCUMENT RECORDED IN BOOK 291, PAGE 406 OF DEEDS, F.C.R.

PARCEL 2
P.M. 4596, BK. 30, PG. 20, F.C.R.

CENTER SECTION 16-13/19 NOTHING FOUND, POINT FALL ON SEWER MANHOLE LID, REESTABLISHED PER C.R. 7434