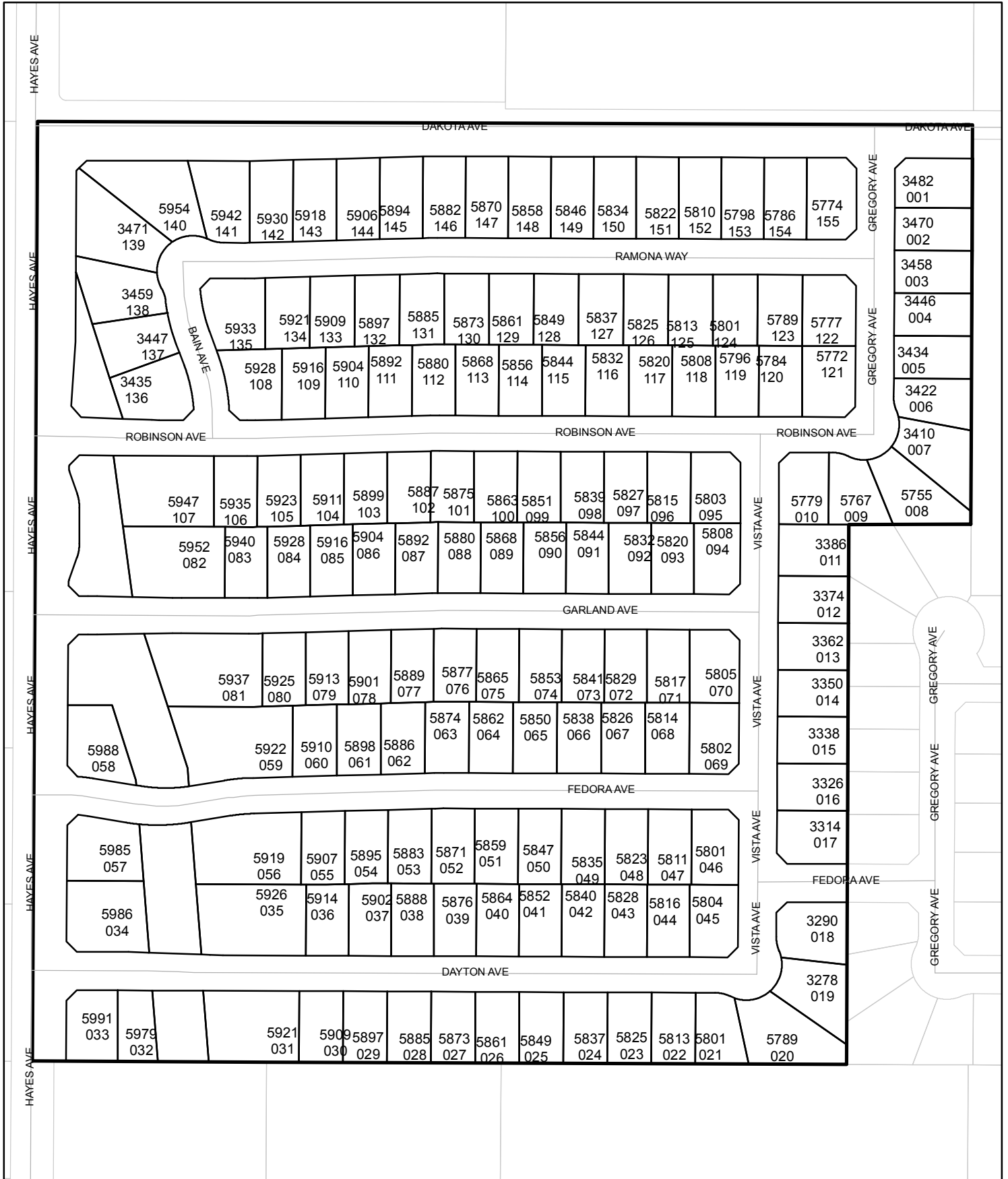




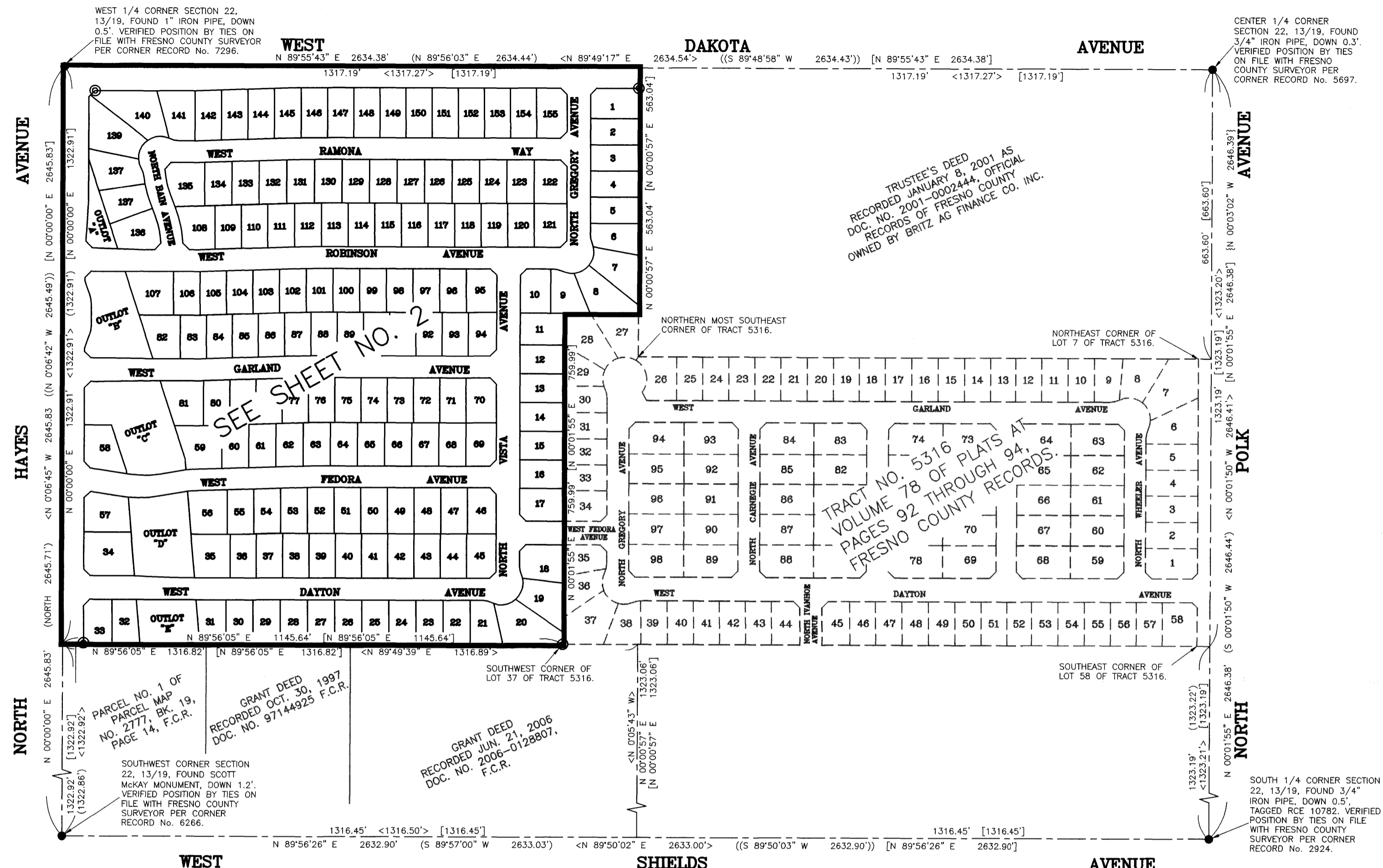
Street Names, Addresses and (Lot Numbers) for T5728

Prepared on Mon Oct 22 13:57:43 2018



FINAL MAP OF TRACT NO. 5728

PHASE 2 OF TENTATIVE MAP NO. 5316
 CENTEX HOMES
 IN THE CITY OF FRESNO, FRESNO COUNTY, CALIFORNIA
 SURVEYED AND PLATTED IN FEBRUARY, 2006
 BY DIXON & ASSOCIATES
 CONSISTING OF 3 SHEETS
 SHEET 3 OF 3



TRUSTEE'S DEED
 RECORDED JANUARY 8, 2001 AS
 DOC. NO. 2001-0002444, OFFICIAL
 RECORDS OF FRESNO COUNTY
 OWNED BY BRITZ AG FINANCE CO., INC.

TRACT NO. 5316
 VOLUME 92 THROUGH 94,
 FRESNO COUNTY RECORDS

LINE DATA:

LINE NUMBER	BEARING	DISTANCE
L 1	N 89°55'43" E	88.81'
L 2	N 89°55'43" E	48.34'
L 3	N 88°04'04" W	46.72'
L 4	N 90°00'00" E	41.12'
L 5	N 81°04'24" W	60.74'
L 6	N 80°26'39" E	52.66'
L 7	N 89°56'05" E	135.06'
L 8	N 88°19'55" W	43.43'
L 9	N 00°04'17" W	23.73'
L 10	N 00°04'17" W	21.31'
L 11	N 00°01'55" E	34.20'
L 12	N 89°55'43" E	13.38'
L 13	N 19°17'06" E	32.67'
L 14	N 19°17'06" W	32.68'
L 15	N 20°32'23" W	32.15'
L 16	N 89°55'43" E	13.29'
L 17	N 89°55'43" E	34.14'
L 18	N 89°55'43" E	10.24'
L 19	N 89°50'55" E	36.40'
L 20	N 44°58'03" E	20.67'
L 21	N 44°59'00" E	20.77'
L 22	N 45°01'00" W	20.77'
L 23	N 44°58'49" E	20.77'
L 24	N 44°58'20" E	20.67'
L 25	N 45°01'57" W	20.67'
L 26	N 45°01'11" W	20.77'
L 27	N 47°55'25" E	20.98'
L 28	N 42°58'13" W	20.50'
L 29	N 44°57'52" E	20.67'
L 30	N 45°02'08" W	19.93'
L 31	N 44°58'20" E	19.94'
L 32	N 42°18'47" W	20.74'
L 33	N 42°59'56" E	20.63'
L 34	N 44°58'20" E	20.77'
L 35	N 45°01'40" W	20.67'
L 36	N 44°57'52" E	20.56'
L 37	N 46°29'29" W	20.91'
L 38	N 42°40'14" E	20.61'
L 39	N 45°01'40" W	20.77'
L 40	N 03°26'31" E	91.14'
L 41	N 87°58'26" W	0.83'
L 42	N 89°56'05" E	34.55'
L 43	N 81°04'24" W	6.13'
L 44	N 88°09'20" E	13.40'
L 45	N 89°55'43" E	35.45'
L 46	N 89°55'43" E	34.47'
L 47	N 88°09'20" E	13.93'
L 48	N 88°09'20" E	37.11'
L 49	N 88°09'20" E	25.87'
L 50	N 89°55'43" E	21.99'
L 51	N 20°32'23" W	18.72'
L 52	N 20°32'23" W	13.43'
L 53	N 89°55'43" E	30.22'
L 54	N 88°09'20" E	7.55'
L 55	N 00°01'55" E	28.00'
L 56	N 00°00'57" E	18.66'
L 57	N 89°56'05" E	27.49'
L 58	N 00°00'57" E	25.89'
L 59	N 88°09'20" E	5.22'

LINE DATA:

LINE NUMBER	BEARING	DISTANCE
L 60	N 89°55'43" E	14.37'
L 61	N 88°09'20" E	5.93'
L 62	N 88°09'20" E	18.43'
L 63	N 88°09'20" E	1.35'
L 64	N 88°09'20" E	0.60'
L 65	N 00°00'00" E	22.89'
L 66	N 44°57'52" E	5.30'
L 67	N 44°57'52" E	15.26'
L 68	N 88°09'31" E	2.18'
L 69	N 88°09'31" E	12.87'
L 70	N 88°09'20" E	15.49'
L 71	N 89°55'43" E	9.93'
L 72	N 89°56'05" E	28.77'
L 73	N 88°09'21" E	31.25'
L 74	N 88°09'21" E	33.18'
L 75	N 89°56'05" E	26.84'
L 76	N 04°40'00" W	6.90'
L 77	S 89°55'43" W	62.19'
L 78	N 88°09'20" E	21.21'
L 79	N 89°55'43" E	2.87'
L 80	N 88°09'20" E	30.90'
L 81	N 89°55'43" E	30.11'
L 82	N 89°56'05" E	83.39'
L 83	N 89°56'05" E	35.61'
L 84	N 88°09'21" E	25.41'
L 85	N 88°09'21" E	39.02'
L 86	N 89°56'05" E	22.00'
L 87	N 89°56'05" E	61.00'
L 88	N 89°56'05" E	66.00'
L 89	N 89°55'43" E	55.70'
L 90	N 88°09'20" E	10.91'
L 91	N 88°09'20" E	61.03'
L 92	N 88°09'20" E	60.03'
L 93	N 88°09'20" E	6.42'
L 94	N 89°55'43" E	53.58'
L 95	N 89°55'43" E	60.00'
L 96	N 89°55'43" E	109.67'
L 97	N 89°55'43" E	79.40'
L 98	N 89°55'43" E	54.63'
L 99	N 88°09'20" E	6.38'
L 100	N 88°09'20" E	7.96'
L 101	N 89°55'43" E	53.05'
L 102	N 89°55'43" E	61.00'
L 103	N 89°55'43" E	70.00'
L 104	N 88°09'20" E	68.39'
L 105	N 88°09'20" E	92.40'
L 106	N 88°09'20" E	63.03'
L 107	N 88°09'20" E	48.91'
L 108	N 89°55'43" E	14.11'
L 109	N 89°55'43" E	63.00'
L 110	N 04°40'00" W	25.14'
L 111	N 18°03'44" W	110.81'
L 112	N 89°55'43" E	100.00'
L 113	N 89°55'43" E	5.43'
L 114	N 88°04'04" W	99.70'
L 115	N 89°55'43" E	70.18'
L 116	N 89°55'43" E	75.15'
L 117	N 20°32'23" W	28.28'
L 118	N 20°32'23" W	3.87'

CURVE DATA:

CURVE NUMBER	DELTA	RADIUS	ARC LENGTH	CHORD LENGTH
C 1	1°44'00"	750.00'	22.89'	22.89'
C 2	8°55'36"	250.00'	38.95'	38.91'
C 3	18°28'57"	250.00'	80.65'	80.30'
C 4	7°42'41"	277.00'	37.28'	37.25'
C 5	1°46'23"	400.00'	12.38'	12.38'
C 6	0°57'59"	750.00'	12.65'	12.65'
C 7	2°00'13"	300.00'	10.49'	10.49'
C 8	20°28'06"	250.00'	89.31'	88.84'
C 9	25°50'31"	50.00'	22.55'	22.36'
C 10	23°04'26"	50.00'	20.14'	20.00'
C 11	10°59'01"	50.00'	9.59'	9.57'
C 12	80°00'00"	50.00'	52.36'	50.00'
C 13	61°19'40"	50.00'	53.52'	51.00'
C 14	6°30'26"	50.00'	5.68'	5.68'
C 15	10°17'00"	50.00'	8.97'	8.96'
C 16	51°34'14"	50.00'	45.00'	43.50'
C 17	45°59'01"	50.00'	40.13'	39.06'
C 18	30°59'28"	50.00'	27.04'	26.72'
C 19	2°05'29"	500.00'	18.25'	18.25'
C 20	14°31'24"	276.00'	69.96'	69.77'
C 21	3°57'33"	276.00'	19.07'	19.07'
C 22	18°28'57"	224.00'	72.26'	71.95'
C 23	7°42'41"	252.00'	33.92'	33.89'
C 24	5°09'08"	302.00'	27.16'	27.15'
C 25	1°46'23"	375.00'	11.60'	11.60'
C 26	1°04'32"	425.00'	7.98'	7.98'
C 27	0°41'51"	425.00'	5.17'	5.17'
C 28	16°18'13"	225.00'	64.02'	63.81'
C 29	9°22'53"	275.00'	45.03'	44.98'

CURVE DATA:

CURVE NUMBER	DELTA	RADIUS	ARC LENGTH	CHORD LENGTH
C 30	3°32'35"	275.00'	17.01'	17.00'
C 31	21°46'46"	50.00'	19.01'	18.89'
C 32	26°05'06"	50.00'	22.76'	22.57'
C 33	58°03'26"	50.00'	50.66'	48.52'
C 34	59°14'29"	50.00'	51.70'	49.43'
C 35	1°46'54"	50.00'	1.55'	1.55'
C 36	34°24'56"	15.00'	9.01'	8.88'
C 37	19°17'06"	60.00'	20.20'	20.10'
C 38	2°05'29"	777.00'	28.36'	28.36'
C 39	138°49'07"	50.00'	121.14'	93.61'
C 40	138°49'43"	50.00'	121.15'	93.61'
C 41	2°33'33"	302.00'	13.49'	13.49'
C 42	1°46'23"	425.00'	13.15'	13.15'
C 43	34°19'23"	15.00'	8.99'	8.85'
C 44	17°11'54"	275.00'	82.55'	82.24'
C 45	15°40'02"	225.00'	61.53'	61.33'
C 46	0°49'43"	375.00'	5.42'	5.42'
C 47	0°56'40"	375.00'	6.18'	6.18'
C 48	0°08'55"	375.00'	0.97'	0.97'
C 49	1°37'28"	375.00'	10.63'	10.63'
C 50	4°48'54"	277.00'	23.28'	23.27'
C 51	3°24'18"	223.00'	13.25'	13.25'
C 52	145°09'55"	50.00'	126.68'	95.41'
C 53	18°28'57"	276.00'	89.03'	88.65'
C 54	07°42'41"	302.00'	40.65'	40.62'
C 55	12°55'28"	275.00'	62.03'	61.90'
C 56	02°05'47"	252.00'	9.22'	9.22'
C 57	05°36'54"	252.00'	24.70'	24.69'
C 58	00°49'26"	750.00'	10.78'	10.78'
C 59	00°08'33"	750.00'	1.87'	1.87'

RADIAL DATA:

RADIAL NUMBER	RADIAL NUMBER	RADIUS
R 1	N 25°46'36" E	50.00'
R 2	N 19°16'10" E	50.00'
R 3	N 42°03'30" W	50.00'
R 4	N 77°56'30" E	50.00'
R 5	N 66°57'29" E	50.00'
R 6	N 25°46'14" E	50.00'
R 7	N 05°13'14" W	50.00'
R 8	N 51°12'15" W	50.00'
R 9	N 77°13'31" E	50.00'
R 10	N 66°56'31" E	50.00'
R 11	N 01°00'57" W	375.00'
R 12	N 23°59'20" E	50.00'
R 13	N 35°15'09" W	50.00'
R 14	N 86°41'25" E	50.00'
R 15	N 60°36'19" E	50.00'
R 16	N 82°23'05" E	275.00'
R 17	N 85°45'50" E	225.00'
R 18	N 85°07'39" E	225.00'
R 19	N 86°39'31" E	275.00'
R 20	N 74°57'43" W	15.00'
R 21	N 74°52'10" E	15.00'
R 22	N 00°04'16" E	750.00'
R 23	N 00°46'08" W	425.00'
R 24	N 01°41'45" W	375.00'
R 25	N 04°06'42" E	277.00'
R 26	N 05°31'18" W	223.00'

