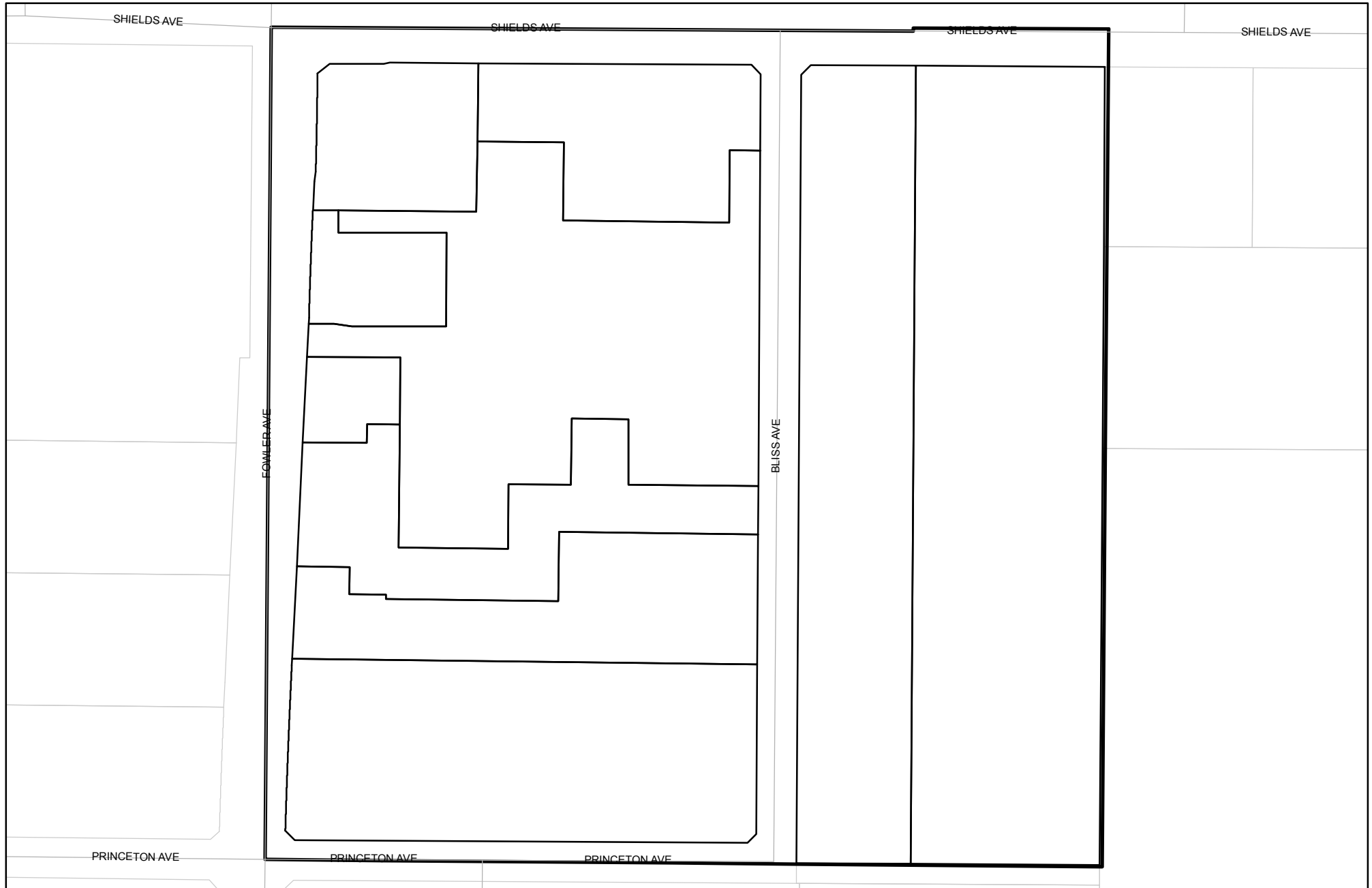




Prepared on Tue Jan 03 22:19:05 2017

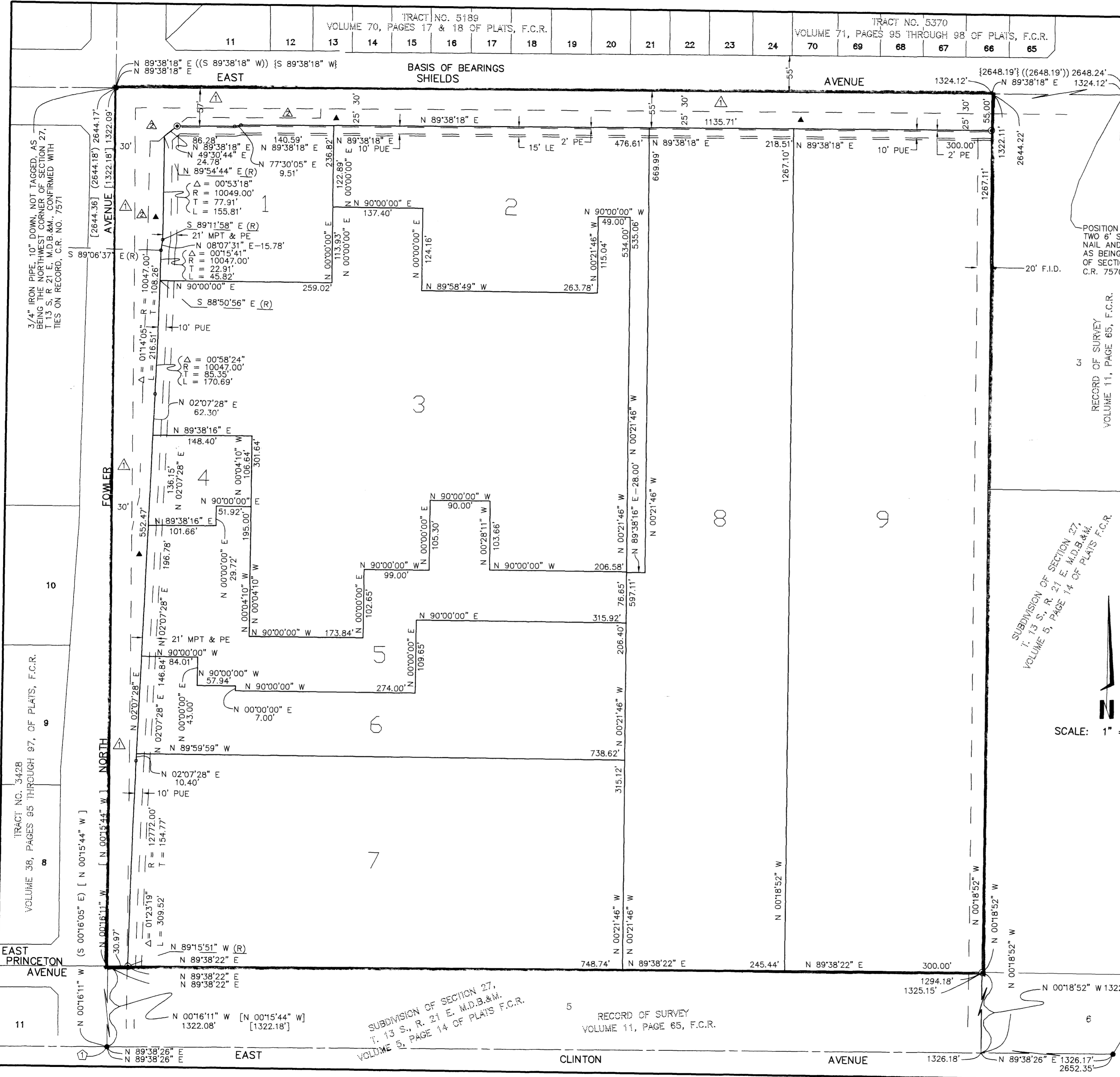
Street Names, Addresses and (Lot Numbers) for T5717



11	12	13	14	15	16	17	18	19	20	21	22	23	24	70	69	68	67	66	65
TRACT NO. 5189 VOLUME 70, PAGES 17 & 18 OF PLATS, F.C.R.														TRACT NO. 5370 VOLUME 71, PAGES 95 THROUGH 98 OF PLATS, F.C.R.					

TRACT NO. 5717

A PLANNED DEVELOPMENT
 PHASE 1 OF TENTATIVE TRACT NO. 5717
 BEING A RESUBDIVISION OF LOT 4 OF THE SUBDIVISION OF SECTION 27,
 TOWNSHIP 13 SOUTH, RANGE 21 EAST MOUNT DIABLO BASE AND MERIDIAN,
 RECORDED IN VOLUME 5, PAGE 14 OF PLATS, FRESNO COUNTY RECORDS.
 IN THE CITY OF FRESNO, COUNTY OF FRESNO, STATE OF CALIFORNIA
 SURVEYED AND PLATTED IN AUGUST 2007, BY GARY G. GIANNETTA
**CONSISTING OF TWO SHEETS
 SHEET TWO OF TWO SHEETS**



POSITION FALLS ON SEWER MANHOLE,
 TWO 6" SWING TIES, NORTH AND WEST,
 NAIL AND BRASS CAP, TAGGED L.S. 6619
 AS BEING THE NORTH QUARTER CORNER
 OF SECTION 27, T 13 S, R 21 E, M.D.B. & M.
 C.R. 7570

BASIS OF BEARINGS

THE NORTH LINE OF THE NORTHWEST QUARTER OF SECTION 27,
 TOWNSHIP 13 SOUTH, RANGE 21 EAST, MOUNT DIABLO BASE
 AND MERIDIAN, TAKEN AS BEARING S 89°38'18" W AS PER
 MAP OF TRACT NO. 5370, RECORDED IN VOLUME 71, PAGES
 95 THROUGH 98 OF PLATS, FRESNO COUNTY RECORDS.

LEGEND:

- MONUMENT FOUND AND ACCEPTED AS NOTED
- SET 3/4" IRON PIPE, 30" LONG, 6" DOWN BELOW GROUND, TAGGED R.C.E. 26996
- ⊙ SET 3/4" IRON PIPE, 30" LONG, 4" UP IN 6" DIAMETER x 30" P.C.C. MONUMENT, DOWN 6" BELOW GROUND, TAGGED R.C.E. 26996
- ▲ NOW OFFERED FOR DEDICATION FOR PUBLIC STREET PURPOSES FOR PUBLIC USE
- () RECORD DATA AS PER PARCEL MAP NO. 00-12, RECORDED IN BOOK 61, PAGES 55 AND 56 OF PARCEL MAPS, F.C.R.
- [] RECORD DATA AS PER TRACT NO. 3428, RECORDED IN VOLUME 38, PAGES 95 THROUGH 97 OF PLATS, F.C.R.
- { } RECORD DATA AS PER TRACT NO. 5189, RECORDED IN VOLUME 70, PAGES 17 AND 18 OF PLATS, F.C.R.
- { } RECORD DATA AS PER TRACT NO. 5370, RECORDED IN VOLUME 71, PAGES 95 THROUGH 98 OF PLATS, F.C.R.
- △ PREVIOUSLY DEDICATED FOR PUBLIC STREET PURPOSES AS PER THE SUBDIVISION MAP OF SECTION 27, T 13 S, R 21 E, M.D.B. & M., RECORDED IN VOLUME 5 PAGE 14 OF PLATS, F.C.R.
- △ INDICATES A DEED OF EASEMENT FOR PUBLIC STREET PURPOSES RECORDED MARCH 21, 2006 AS DOCUMENT NO. 2006-0058181, OF OFFICIAL RECORDS.
- F.I.D. 20' FRESNO IRRIGATION DISTRICT PIPELINE EASEMENT RECORDED MARCH 21, 2008 AS DOC. NO. 2008046087, F.C.R.
- F.C.R. FRESNO COUNTY RECORDS
- PUE PUBLIC UTILITY EASEMENT NOW OFFERED FOR DEDICATION FOR PUBLIC USE
- (CALC) CALCULATED FROM RECORD DATA
- (R) DENOTES RADIAL BEARING
- MPT INDICATES A 21-FOOT BIKE/PEDESTRIAN TRAIL EASEMENT NOW OFFERED FOR DEDICATION FOR PUBLIC USE
- LE LANDSCAPE EASEMENT NOW OFFERED FOR DEDICATION FOR PUBLIC USE
- PE PEDESTRIAN EASEMENT NOW OFFERED FOR DEDICATION FOR PUBLIC USE
- BLUE BORDER INDICATES THE LIMITS OF THIS SUBDIVISION

SCALE: 1" = 100'



SUBDIVISION OF SECTION 27,
 T. 13 S., R. 21 E. M.D.B. & M.
 VOLUME 5, PAGE 14 OF PLATS F.C.R.

SUBDIVISION OF SECTION 27,
 T. 13 S., R. 21 E. M.D.B. & M.
 VOLUME 5, PAGE 14 OF PLATS F.C.R.

RECORD OF SURVEY
 VOLUME 11, PAGE 65, F.C.R.

NOTE:
 1. SET 3/4" IRON PIPE, 6" DOWN, TAGGED RCE 26996 AT ALL LOT CORNERS.

MONUMENTS FOUND:
 1. POSITION FALLS ON SEWER MANHOLE, TWO 6" SWING TIES, NORTH AND EAST, AS BEING THE WEST QUARTER CORNER OF SECTION 27, T 13 S, R 21 E, M.D.B. & M. C.R. 5609

2. BRASS CAP MARKED W/ "+", 13" DOWN, IN MONUMENT WELL, PER TIES PER RECORD OF SURVEY RECORDED IN BOOK 44, PAGE 68, F.C.R. AS BEING THE CENTER QUARTER CORNER OF SECTION 27, T 13 S, R 21 E, M.D.B. & M.