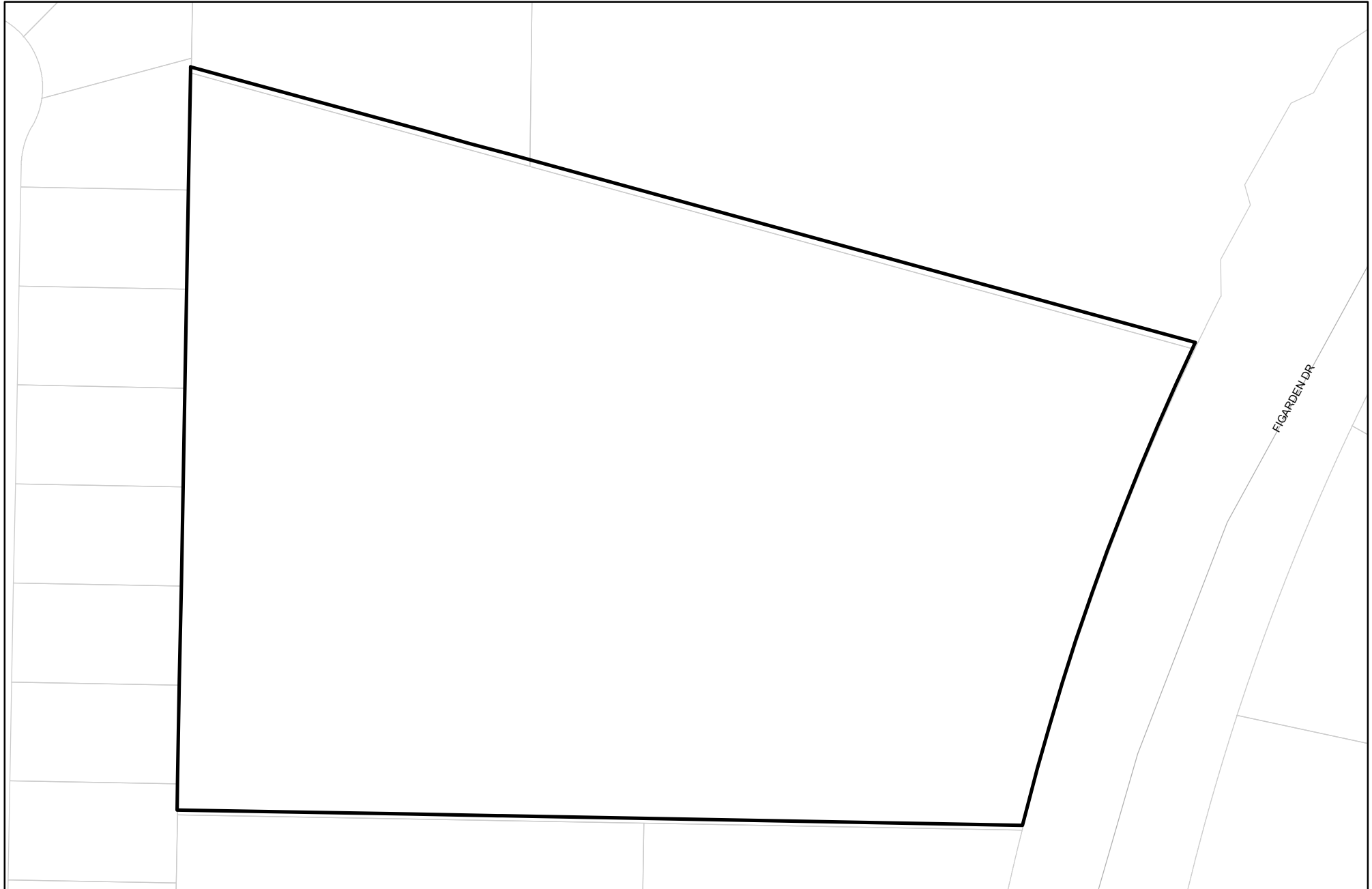




Prepared on Mon Oct 22 14:00:03 2018

Street Names, Addresses and (Lot Numbers) for T5666



FINAL MAP OF TRACT NO. 5666 CALIFORNIA COURTYARDS

A PLANNED DEVELOPMENT
IN THE CITY OF FRESNO
COUNTY OF FRESNO - STATE OF CALIFORNIA
SURVEYED AND PLATTED IN AUGUST 2006
BY LARS ANDERSEN & ASSOCIATES, INC.
CONSISTING OF THREE SHEETS SHEET 2 OF 3

LEGEND

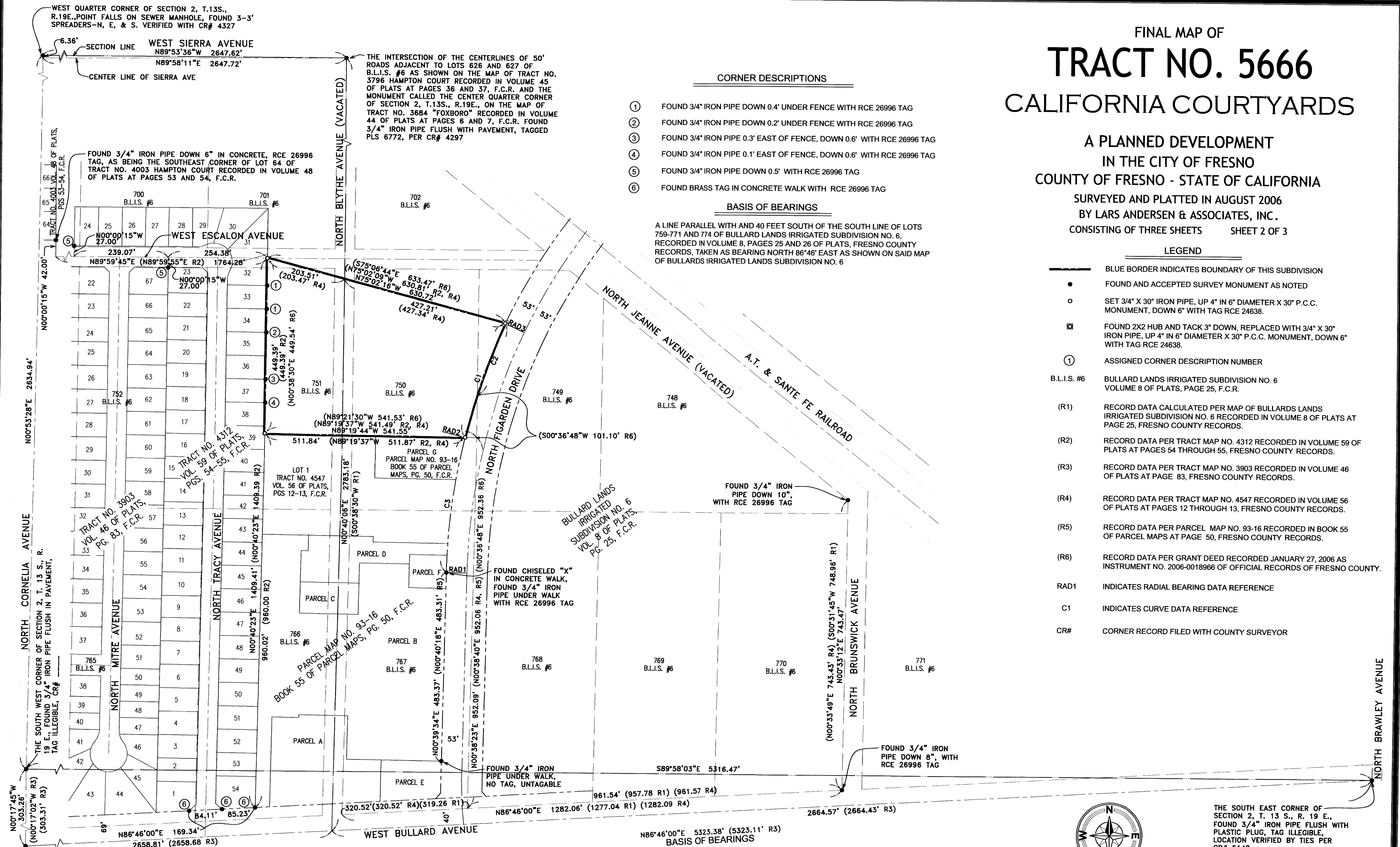
- BLUE BORDER INDICATES BOUNDARY OF THIS SUBDIVISION
- FOUND AND ACCEPTED SURVEY MONUMENT AS NOTED
- SET 3/4" X 30" IRON PIPE, UP 4" IN 6" DIAMETER X 30" P.C.C. MONUMENT, DOWN 6" WITH TAG RCE 24638.
- ⊠ FOUND 2X2 HUB AND TACK 3" DOWN, REPLACED WITH 3/4" X 30" IRON PIPE, UP 4" IN 6" DIAMETER X 30" P.C.C. MONUMENT, DOWN 6" WITH TAG RCE 24638.
- ① ASSIGNED CORNER DESCRIPTION NUMBER
- B.L.I.S. #6 BULLARD LANDS IRRIGATED SUBDIVISION NO. 6 VOLUME 8 OF PLATS, PAGE 25, F.C.R.
- (R1) RECORD DATA CALCULATED PER MAP OF BULLARDS LANDS IRRIGATED SUBDIVISION NO. 6 RECORDED IN VOLUME 8 OF PLATS AT PAGE 25, FRESNO COUNTY RECORDS.
- (R2) RECORD DATA PER TRACT MAP NO. 4312 RECORDED IN VOLUME 59 OF PLATS AT PAGES 54 THROUGH 55, FRESNO COUNTY RECORDS.
- (R3) RECORD DATA PER TRACT MAP NO. 3903 RECORDED IN VOLUME 46 OF PLATS AT PAGE 83, FRESNO COUNTY RECORDS.
- (R4) RECORD DATA PER TRACT MAP NO. 4547 RECORDED IN VOLUME 56 OF PLATS AT PAGES 12 THROUGH 13, FRESNO COUNTY RECORDS.
- (R5) RECORD DATA PER PARCEL MAP NO. 93-16 RECORDED IN BOOK 55 OF PARCEL MAPS AT PAGE 50, FRESNO COUNTY RECORDS.
- (R6) RECORD DATA PER GRANT DEED RECORDED JANUARY 27, 2006 AS INSTRUMENT NO. 2006-0018966 OF OFFICIAL RECORDS OF FRESNO COUNTY.
- RAD1 INDICATES RADIAL BEARING DATA REFERENCE
- C1 INDICATES CURVE DATA REFERENCE
- CR# CORNER RECORD FILED WITH COUNTY SURVEYOR

CORNER DESCRIPTIONS

- ① FOUND 3/4" IRON PIPE DOWN 0.4' UNDER FENCE WITH RCE 26996 TAG
- ② FOUND 3/4" IRON PIPE DOWN 0.2' UNDER FENCE WITH RCE 26996 TAG
- ③ FOUND 3/4" IRON PIPE 0.3' EAST OF FENCE, DOWN 0.6' WITH RCE 26996 TAG
- ④ FOUND 3/4" IRON PIPE 0.1' EAST OF FENCE, DOWN 0.6' WITH RCE 26996 TAG
- ⑤ FOUND 3/4" IRON PIPE DOWN 0.5' WITH RCE 26996 TAG
- ⑥ FOUND BRASS TAG IN CONCRETE WALK WITH RCE 26996 TAG

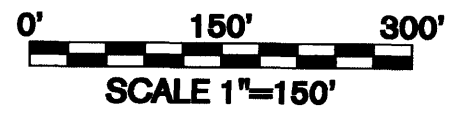
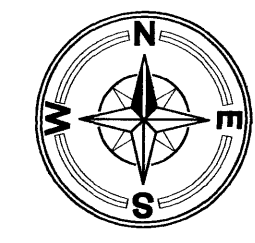
BASIS OF BEARINGS

A LINE PARALLEL WITH AND 40 FEET SOUTH OF THE SOUTH LINE OF LOTS 759-771 AND 774 OF BULLARD LANDS IRRIGATED SUBDIVISION NO. 6, RECORDED IN VOLUME 8, PAGES 25 AND 26 OF PLATS, FRESNO COUNTY RECORDS, TAKEN AS BEARING NORTH 86°46' EAST AS SHOWN ON SAID MAP OF BULLARDS IRRIGATED LANDS SUBDIVISION NO. 6



RADIAL DATA		
RADIAL	BEARING	(R) BEARING
RAD1	N89°20'26"W	(N89°19'42"W R4)
RAD2	N76°21'56"W	(N76°21'12"W R4)
RAD3	N64°54'27"W	(N64°53'43"W R4) (N64°55'31"W R6)

CURVE DATA						
CURVE	LENGTH	RADIUS	DELTA	LENGTH (R)	RADIUS (R)	DELTA (R)
C1	310.57'	1553.00'	11°27'29"	(310.57' R2, R4)	(1553.00' R2, R4)	(11°27'29" R2, R4)
C2				(205.90' R6)	(1553.00' R6)	(7°35'47" R6)
C3	351.69'	1553.00'	12°58'30"	(351.69' R4, R5)	(1553.00' R4, R5)	(12°58'30" R4, R5)



THE SOUTH EAST CORNER OF SECTION 2, T. 13 S., R. 19 E., FOUND 3/4" IRON PIPE FLUSH WITH PLASTIC PLUG, TAG ILLEGIBLE, LOCATION VERIFIED BY TIES PER CR# 5142.

WEST QUARTER CORNER OF SECTION 2, T.13S., R.19E., POINT FALLS ON SEWER MANHOLE, FOUND 3-3" SPREADERS-N, E, & S. VERIFIED WITH CR# 4327

THE INTERSECTION OF THE CENTERLINES OF 50' ROADS ADJACENT TO LOTS 626 AND 627 OF B.L.I.S. #6 AS SHOWN ON THE MAP OF TRACT NO. 3796 HAMPTON COURT RECORDED IN VOLUME 45 OF PLATS AT PAGES 36 AND 37, F.C.R. AND THE MONUMENT CALLED THE CENTER QUARTER CORNER OF SECTION 2, T.13S., R.19E., ON THE MAP OF TRACT NO. 3684 "FOXBORO" RECORDED IN VOLUME 44 OF PLATS AT PAGES 6 AND 7, F.C.R. FOUND 3/4" IRON PIPE FLUSH WITH PAVEMENT, TAGGED PLS 6772, PER CR# 4297

FOUND 3/4" IRON PIPE DOWN 6" IN CONCRETE, RCE 26996 TAG, AS BEING THE SOUTHEAST CORNER OF LOT 64 OF TRACT NO. 4003 HAMPTON COURT RECORDED IN VOLUME 48 OF PLATS AT PAGES 53 AND 54, F.C.R.

THE SOUTH WEST CORNER OF SECTION 2, T. 13 S., R. 19 E., FOUND 3/4" IRON PIPE FLUSH IN PAVEMENT, TAG ILLEGIBLE, CR#

THE INTERSECTION OF THE WEST LINE OF SECTION 11, T. 13 S., R. 19 E., WITH THE CENTERLINE OF WEST BULLARD AVENUE PER B.L.I.S. #6 FOUND NAIL IN PAVEMENT, CR#

FINAL MAP OF TRACT NO. 5666 CALIFORNIA COURTYARD

A PLANNED DEVELOPMENT
IN THE CITY OF FRESNO
COUNTY OF FRESNO - STATE OF CALIFORNIA

SURVEYED AND PLATTED IN AUGUST 2006
BY LARS ANDERSEN & ASSOCIATES, INC.
CONSISTING OF THREE SHEETS SHEET 3 OF 3

BASIS OF BEARINGS

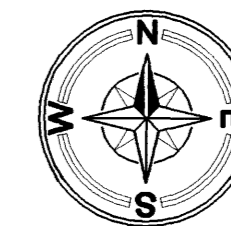
A LINE PARALLEL WITH AND 40 FEET SOUTH OF THE SOUTH LINE OF LOTS 759-771 AND 774 OF BULLARD LANDS IRRIGATED SUBDIVISION NO. 6, RECORDED IN VOLUME 8, PAGES 25 AND 26 OF PLATS, FRESNO COUNTY RECORDS, TAKEN AS BEARING NORTH 86°46' EAST AS SHOWN ON SAID MAP OF BULLARDS IRRIGATED LANDS SUBDIVISION NO. 6.

LEGEND

- THE BLUE BORDER INDICATES THE LIMITS OF THIS SUBDIVISION.
- MONUMENT FOUND AND ACCEPTED AS NOTED ON SHEET 2 OF 3 SHEETS.
- SET 3/4" X 30" IRON PIPE, UP 4" IN 6" DIAMETER X 30" P.C.C. MONUMENT, DOWN 6" WITH TAG RCE 24638 OR AS NOTED.
- ⊠ FOUND 2X2 HUB AND TACK 3" DOWN, REPLACED WITH 3/4" X 30" IRON PIPE, UP 4" IN 6" DIAMETER X 30" P.C.C. MONUMENT, DOWN 6" WITH TAG RCE 24638.
- LE INDICATES LANDSCAPE EASEMENT NOW OFFERED FOR DEDICATION FOR PUBLIC USE.
- PUE INDICATES PUBLIC UTILITY EASEMENT NOW OFFERED FOR DEDICATION FOR PUBLIC USE.
- IRE INDICATES IRRIGATION EASEMENT RECORDED OCTOBER 18, 1994 AS INSTRUMENT NO. 94-161657 OF OFFICIAL RECORDS OF FRESNO COUNTY.
- △ INDICATES AREA PREVIOUSLY DEEDED TO THE CITY OF FRESNO FOR STREET PROPOSES PER INSTRUMENT NO. 89-117130 OF OFFICIAL RECORDS OF FRESNO COUNTY.
- C1 INDICATES CURVE DATA REFERENCE.
- R1 INDICATES RADIAL BEARING DATA REFERENCE.

NOTES

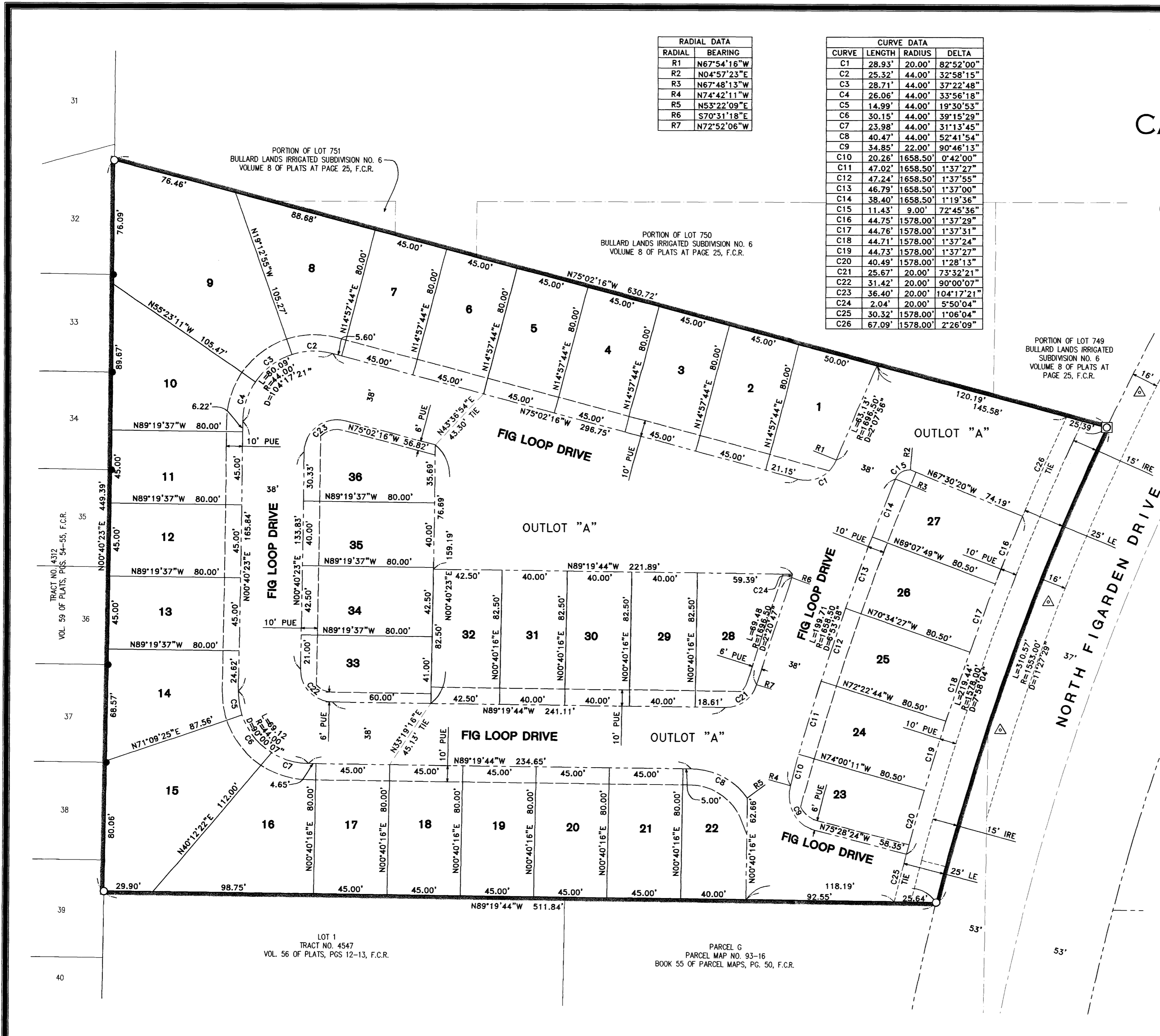
1. ALL BLOCK CORNERS, LOT CORNERS, ANGLE POINTS AND CURVE POINTS ARE MARKED WITH A 3/4" X 30" IRON PIPE, SET 6" DOWN WITH TAG RCE 24638 UNLESS OTHERWISE NOTED.
2. OUTLOT "A" SHALL BE FOR ACCESS, COMMUNITY FACILITIES, LANDSCAPING, PARKING AND PUBLIC UTILITY PURPOSES.



0' 40' 80'
SCALE 1"=40'

RADIAL DATA	
RADIAL	BEARING
R1	N67°54'16"W
R2	N04°57'23"E
R3	N67°48'13"W
R4	N74°42'11"W
R5	N53°22'09"E
R6	S70°31'18"E
R7	N72°52'06"W

CURVE DATA			
CURVE	LENGTH	RADIUS	DELTA
C1	28.93'	20.00'	82°52'00"
C2	25.32'	44.00'	32°58'15"
C3	28.71'	44.00'	37°22'48"
C4	26.06'	44.00'	33°56'18"
C5	14.99'	44.00'	19°30'53"
C6	30.15'	44.00'	39°15'29"
C7	23.98'	44.00'	31°13'45"
C8	40.47'	44.00'	52°41'54"
C9	34.85'	22.00'	90°46'13"
C10	20.26'	1658.50'	0°42'00"
C11	47.02'	1658.50'	1°37'27"
C12	47.24'	1658.50'	1°37'55"
C13	46.79'	1658.50'	1°37'00"
C14	38.40'	1658.50'	1°19'36"
C15	11.43'	9.00'	72°45'36"
C16	44.75'	1578.00'	1°37'29"
C17	44.76'	1578.00'	1°37'31"
C18	44.71'	1578.00'	1°37'24"
C19	44.73'	1578.00'	1°37'27"
C20	40.49'	1578.00'	1°28'13"
C21	25.67'	20.00'	73°32'21"
C22	31.42'	20.00'	90°00'07"
C23	36.40'	20.00'	104°17'21"
C24	2.04'	20.00'	5°50'04"
C25	30.32'	1578.00'	1°06'04"
C26	67.09'	1578.00'	2°26'09"



PORTION OF LOT 751
BULLARD LANDS IRRIGATED SUBDIVISION NO. 6
VOLUME 8 OF PLATS AT PAGE 25, F.C.R.

PORTION OF LOT 750
BULLARD LANDS IRRIGATED SUBDIVISION NO. 6
VOLUME 8 OF PLATS AT PAGE 25, F.C.R.

PORTION OF LOT 749
BULLARD LANDS IRRIGATED SUBDIVISION NO. 6
VOLUME 8 OF PLATS AT PAGE 25, F.C.R.

TRACT NO. 4312
VOL. 59 OF PLATS, PGS. 94-95, F.C.R.

LOT 1
TRACT NO. 4547
VOL. 56 OF PLATS, PGS 12-13, F.C.R.

PARCEL G
PARCEL MAP NO. 93-16
BOOK 55 OF PARCEL MAPS, PG. 50, F.C.R.