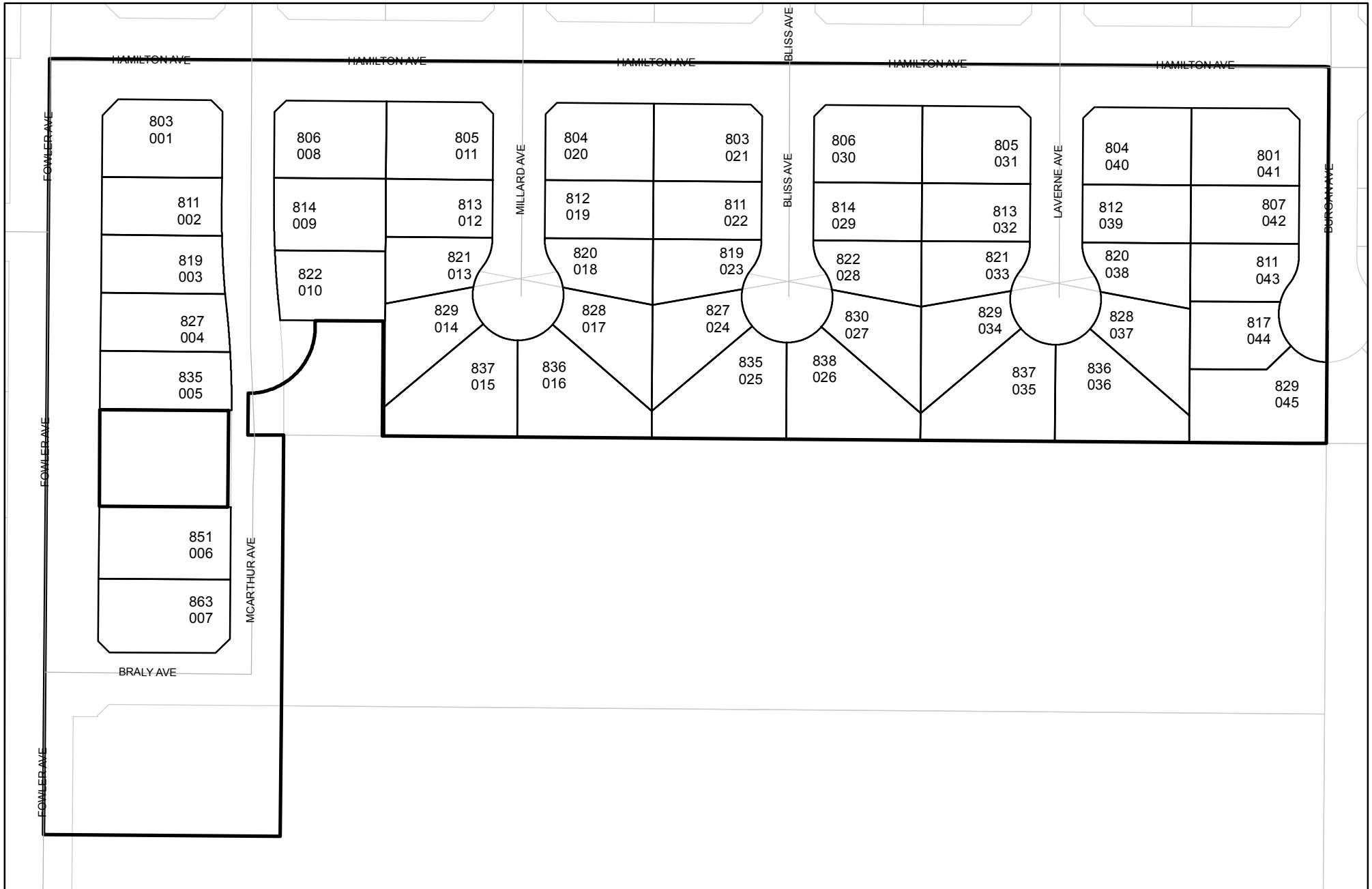




Prepared on Tue Oct 25 22:22:29 2016

# Street Names, Addresses and (Lot Numbers) for T5626

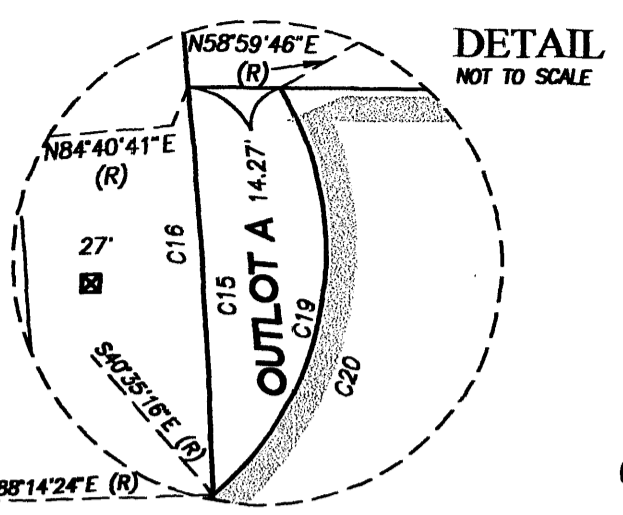


# FINAL MAP OF TRACT NO. 5626

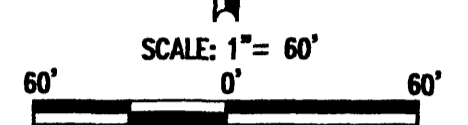
## FALCON RIDGE IV

IN THE CITY OF FRESNO, COUNTY OF FRESNO, STATE OF CALIFORNIA  
 SURVEYED AND PLATTED IN NOVEMBER 2005 BY QUAD KNOPF INC.  
 CONSISTING OF 2 SHEETS  
 SHEET 2 OF 2

- NOTES:**
- SET 3/4" BY 30" IRON PIPE, 6" BELOW SURFACE, TAGGED PLS 7985, AT ALL LOT CORNERS, BEGINNING AND ENDING OF CURVES, AND ANGLE POINTS OF RIGHT OF WAY, UNLESS NOTED OTHERWISE.
  - OUTLOT A TO BE DEDICATED TO THE CITY OF FRESNO FOR LANDSCAPING AND PEDESTRIAN PURPOSES



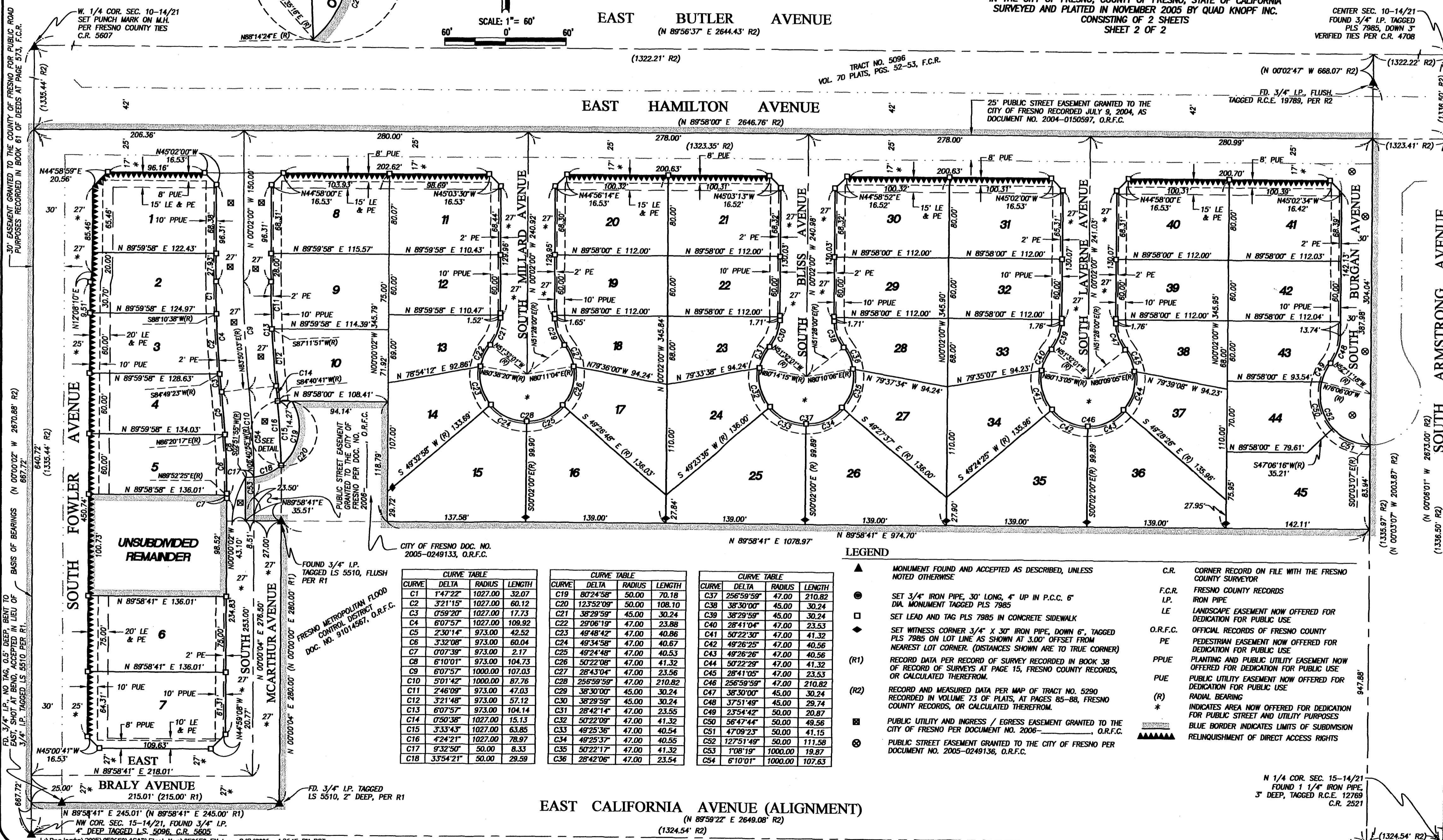
**BASIS OF BEARINGS**  
 THE WEST LINE OF THE SOUTHWEST QUARTER OF SECTION 10, TOWNSHIP 14 SOUTH, RANGE 21 EAST, MOUNT DIABLO BASE AND MERIDIAN, SHOWN TO BEAR NORTH 00°00'00" WEST PER MAP OF TRACT NO. 5290, RECORDED IN VOLUME 73 OF PLATS, AT PAGES 85-88, FRESNO COUNTY RECORDS.



**EAST BUTLER AVENUE**  
 (N 89°56'37" E 2644.43' R2)

**EAST HAMILTON AVENUE**  
 (N 89°58'00" E 2646.76' R2)

**EAST CALIFORNIA AVENUE (ALIGNMENT)**  
 (N 89°58'22" E 2649.08' R2)



**CURVE TABLE**

CURVE	DELTA	RADIUS	LENGTH
C1	1°47'22"	1027.00	32.07
C2	3°21'15"	1027.00	60.12
C3	0°59'20"	1027.00	17.73
C4	6°07'57"	1027.00	109.92
C5	2°30'14"	973.00	42.52
C6	3°32'08"	973.00	60.04
C7	0°07'39"	973.00	2.17
C8	6°10'01"	973.00	104.73
C9	6°07'57"	1000.00	107.03
C10	5°01'42"	1000.00	87.76
C11	2°46'09"	973.00	47.03
C12	3°21'48"	973.00	57.12
C13	6°07'57"	973.00	104.14
C14	0°50'38"	1027.00	15.13
C15	3°33'43"	1027.00	63.85
C16	4°24'21"	1027.00	78.97
C17	9°32'50"	50.00	8.33
C18	3°54'21"	50.00	29.59

CURVE	DELTA	RADIUS	LENGTH
C19	80°24'58"	50.00	70.18
C20	12°52'09"	50.00	108.10
C21	38°29'59"	45.00	30.24
C22	29°06'19"	47.00	23.88
C23	49°48'42"	47.00	40.86
C24	49°34'58"	47.00	40.67
C25	49°24'48"	47.00	40.53
C26	50°22'08"	47.00	41.32
C27	28°43'04"	47.00	23.56
C28	25°59'59"	47.00	210.82
C29	38°30'00"	45.00	30.24
C30	38°29'59"	45.00	30.24
C31	28°42'14"	47.00	23.55
C32	50°22'09"	47.00	41.32
C33	49°25'36"	47.00	40.54
C34	49°25'37"	47.00	40.55
C35	50°22'17"	47.00	41.32
C36	28°42'06"	47.00	23.54

CURVE	DELTA	RADIUS	LENGTH
C37	25°59'59"	47.00	210.82
C38	38°30'00"	45.00	30.24
C39	38°29'59"	45.00	30.24
C40	28°41'04"	47.00	23.53
C41	50°22'30"	47.00	41.32
C42	49°26'25"	47.00	40.56
C43	49°26'26"	47.00	40.56
C44	50°22'29"	47.00	41.32
C45	28°41'05"	47.00	23.53
C46	25°59'59"	47.00	210.82
C47	38°30'00"	45.00	30.24
C48	37°51'49"	45.00	29.74
C49	23°54'42"	50.00	20.87
C50	56°47'44"	50.00	49.56
C51	47°09'23"	50.00	41.15
C52	127°51'49"	50.00	111.58
C53	7°08'19"	1000.00	19.87
C54	6°10'01"	1000.00	107.63

- LEGEND**
- ▲ MONUMENT FOUND AND ACCEPTED AS DESCRIBED, UNLESS NOTED OTHERWISE
  - SET 3/4" IRON PIPE, 30" LONG, 4" UP IN P.C.C. 6" DIA. MONUMENT TAGGED PLS 7985
  - SET LEAD AND TAG PLS 7985 IN CONCRETE SIDEWALK
  - ◆ SET WITNESS CORNER 3/4" X 30" IRON PIPE, DOWN 6", TAGGED PLS 7985 ON LOT LINE AS SHOWN AT 3.00' OFFSET FROM NEAREST LOT CORNER. (DISTANCES SHOWN ARE TO TRUE CORNER)
  - (R1) RECORD DATA PER RECORD OF SURVEY RECORDED IN BOOK 38 OF RECORD OF SURVEYS AT PAGE 15, FRESNO COUNTY RECORDS, OR CALCULATED THEREFROM.
  - (R2) RECORD AND MEASURED DATA PER MAP OF TRACT NO. 5290 RECORDED IN VOLUME 73 OF PLATS, AT PAGES 85-88, FRESNO COUNTY RECORDS, OR CALCULATED THEREFROM.
  - PUBLIC UTILITY AND INGRESS / EGRESS EASEMENT GRANTED TO THE CITY OF FRESNO PER DOCUMENT NO. 2006-0249133, O.R.F.C.
  - ⊗ PUBLIC STREET EASEMENT GRANTED TO THE CITY OF FRESNO PER DOCUMENT NO. 2005-0249136, O.R.F.C.
  - C.R. CORNER RECORD ON FILE WITH THE FRESNO COUNTY SURVEYOR
  - F.C.R. FRESNO COUNTY RECORDS
  - I.P. IRON PIPE
  - LE LANDSCAPE EASEMENT NOW OFFERED FOR DEDICATION FOR PUBLIC USE
  - O.R.F.C. OFFICIAL RECORDS OF FRESNO COUNTY
  - PE PEDESTRIAN EASEMENT NOW OFFERED FOR DEDICATION FOR PUBLIC USE
  - PPUE PLANTING AND PUBLIC UTILITY EASEMENT NOW OFFERED FOR DEDICATION FOR PUBLIC USE
  - PUE PUBLIC UTILITY EASEMENT NOW OFFERED FOR DEDICATION FOR PUBLIC USE
  - (R) RADIAL BEARING
  - \* INDICATES AREA NOW OFFERED FOR DEDICATION FOR PUBLIC STREET AND UTILITY PURPOSES
  - RELINQUISHMENT OF DIRECT ACCESS RIGHTS

30' EASEMENT GRANTED TO THE COUNTY OF FRESNO FOR PUBLIC ROAD PURPOSES RECORDED IN BOOK 61 OF DEEDS AT PAGE 573, F.C.R.

W. 1/4 COR. SEC. 10-14/21 SET PUNCH MARK ON M.H. PER FRESNO COUNTY TIES C.R. 5607

TRACT NO. 5096 VOL. 70 PLATS, PGS. 52-53, F.C.R.

FD. 3/4" I.P., FLUSH TAGGED R.C.E. 19789, PER R2

25' PUBLIC STREET EASEMENT GRANTED TO THE CITY OF FRESNO RECORDED JULY 9, 2004, AS DOCUMENT NO. 2004-0150597, O.R.F.C.

UNSUBDIVED REMAINDER

CITY OF FRESNO DOC. NO. 2005-0249133, O.R.F.C.

FOUND 3/4" I.P. TAGGED LS 5510, FLUSH PER R1

FRESNO METROPOLITAN FLOOD CONTROL DISTRICT DOC. NO. 91014567, O.R.F.C.

FD. 3/4" I.P. TAGGED LS 5510, 2" DEEP, PER R1

FD. 3/4" I.P. TAGGED LS 5510, 2" DEEP, PER R1

W. 1/4 COR. SEC. 15-14/21 FOUND 1 1/4" IRON PIPE, 3" DEEP, TAGGED R.C.E. 12769 C.R. 2521