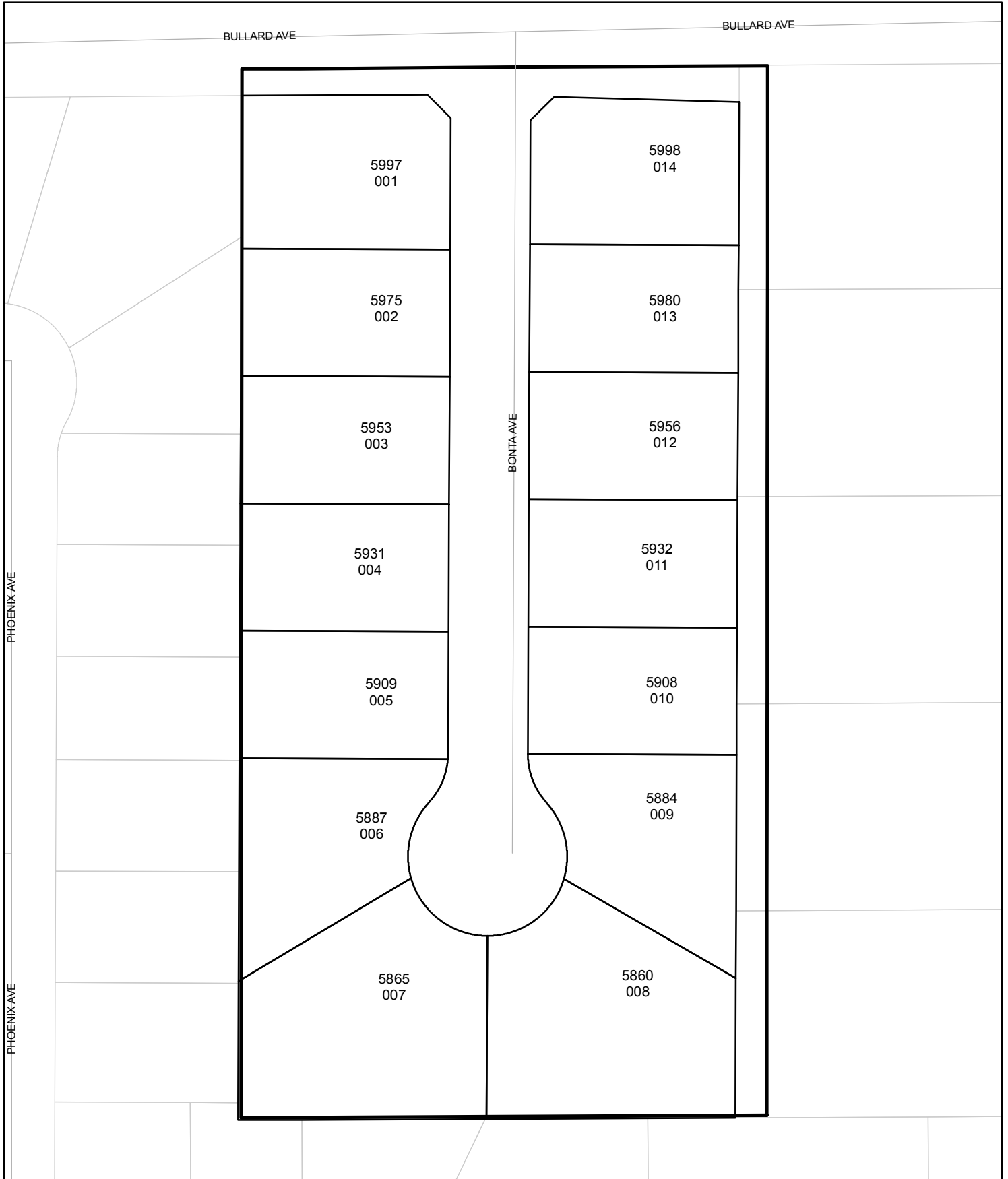




# Street Names, Addresses and (Lot Numbers) for T5614

Prepared on Mon Oct 22 14:04:10 2018



# MAP OF TRACT NO. 5614

PHASE II OF TENTATIVE MAP NO. 5338

IN THE CITY OF FRESNO  
FRESNO COUNTY, CALIFORNIA

SURVEYED AND PLATTED IN AUGUST, 2005  
BY INGELS - BRAUN & ASSOCIATES

CONSISTING OF TWO SHEETS  
SHEET 2 OF 2

### BASIS OF BEARINGS

THE NORTH LINE OF SECTION 8, T. 13 S., R. 19 E., M.D.B. & M. WAS TAKEN TO BE N 89°49'12" E PER RECORD OF SURVEY RECORDED IN BOOK 46 OF RECORD OF SURVEYS AT PAGE 97, FRESNO COUNTY RECORDS.

### LEGEND

- EXISTING MONUMENT FOUND AND ACCEPTED OR AS NOTED. PE PEDESTRIAN EASEMENT NOW OFFERED FOR DEDICATION FOR PUBLIC USE.
- ⊙ SET 1" O.D. IRON PIPE, 30" LONG, UP 4", IN 6" DIA. x 30" CONCRETE MONUMENT DOWN 6" AND TAGGED PLS 6619, EXCEPT AS NOTED. PPUE PLANTING AND PUBLIC UTILITY EASEMENT NOW OFFERED FOR DEDICATION FOR PUBLIC USE.
- (( ... )) RECORD DATA PER DOCUMENT RECORDED JUNE 23, 1965, AS DOCUMENT NO. 51741, O.R.F.C. PUE PUBLIC UTILITY EASEMENT NOW OFFERED FOR DEDICATION FOR PUBLIC USE.
- (... ) RECORD DATA PER RECORD OF SURVEY RECORDED IN BOOK 46 OF RECORD OF SURVEYS AT PAGE 97, F.C.R. (R) DENOTES RADIAL BEARING
- △ INDICATES PORTIONS NOW OFFERED FOR DEDICATION FOR PUBLIC STREET AND UTILITY PURPOSES. O.R.F.C. OFFICIAL RECORDS FRESNO COUNTY
- ⊕ INDICATES PORTIONS PREVIOUSLY DEDICATED BY THE MAP OF MUSCATEL ESTATES RECORDED IN VOLUME 4 OF PLATS AT PAGE 67 F.C.R. AND ACCEPTED BY THE FRESNO COUNTY BOARD OF SUPERVISORS RESOLUTION RECORDED IN BOOK 29, PAGE 9, O.R.F.C. F.C.R. FRESNO COUNTY RECORDS
- ⊙ CORNER RECORD ON FILE WITH FRESNO COUNTY SURVEYOR'S OFFICE. C.R. CORNER RECORD ON FILE WITH FRESNO COUNTY SURVEYOR'S OFFICE.
- ▲ INDICATES RELINQUISHMENT OF DIRECT ACCESS RIGHTS. LE LANDSCAPE EASEMENT NOW OFFERED FOR DEDICATION FOR PUBLIC USE.

### NOTE :

1" O.D. x 30" LONG IRON PIPE TO BE SET 6" DOWN AND TAGGED PLS-6619, AT ALL LOT CORNERS, ANGLE POINTS, BEGINNING OF CURVES AND END OF CURVES, OR AS NOTED WITHIN THE TIME SPECIFIED IN THE SUBDIVISION AGREEMENT FOR THIS TRACT.

### THIS PROPERTY IS SUBJECT TO THE FOLLOWING:

1. STATEMENT OF COVENANTS AFFECTING LAND DEVELOPMENT DEFERRING CERTAIN SEWER CONNECTION CHARGES, WATER CONNECTION CHARGES, URBAN GROWTH MANAGEMENT FEES AND DEVELOPMENT FEES TO THE TIME OF ISSUANCE OF CERTIFICATE OF OCCUPANCY AND CREATION OF LIEN FOR TRACT NO. 5614, PHASE 2 OF TENTATIVE MAP TRACT NO. 5338, RECORDED February 15, 2007 AS DOCUMENT NO. 2007-0032881, FRESNO COUNTY RECORDS.
2. STATEMENT OF COVENANTS AFFECTING LAND DEVELOPMENT FOR LANDSCAPE MAINTENANCE FOR TRACT NO. 5614, PHASE 2 OF TENTATIVE MAP TRACT NO. 5338 RECORDED February 15, 2007 AS DOCUMENT NO. 2007-0032882, FRESNO COUNTY RECORDS.
3. STATEMENT OF COVENANTS AFFECTING LAND DEVELOPMENT PROVIDING SPECIAL SOLID WASTE DISPOSAL SERVICES FOR CERTAIN LOTS WITHIN TRACT NO. 5614, PHASE 2 OF TENTATIVE MAP TRACT NO. 5338, RECORDED February 15, 2007 AS DOCUMENT NO. 2007-0032883, FRESNO COUNTY RECORDS.

**RADIAL LINE TABLE**

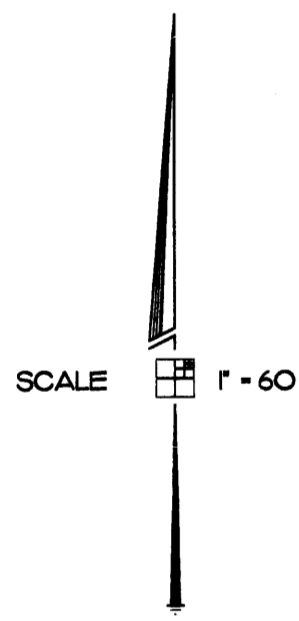
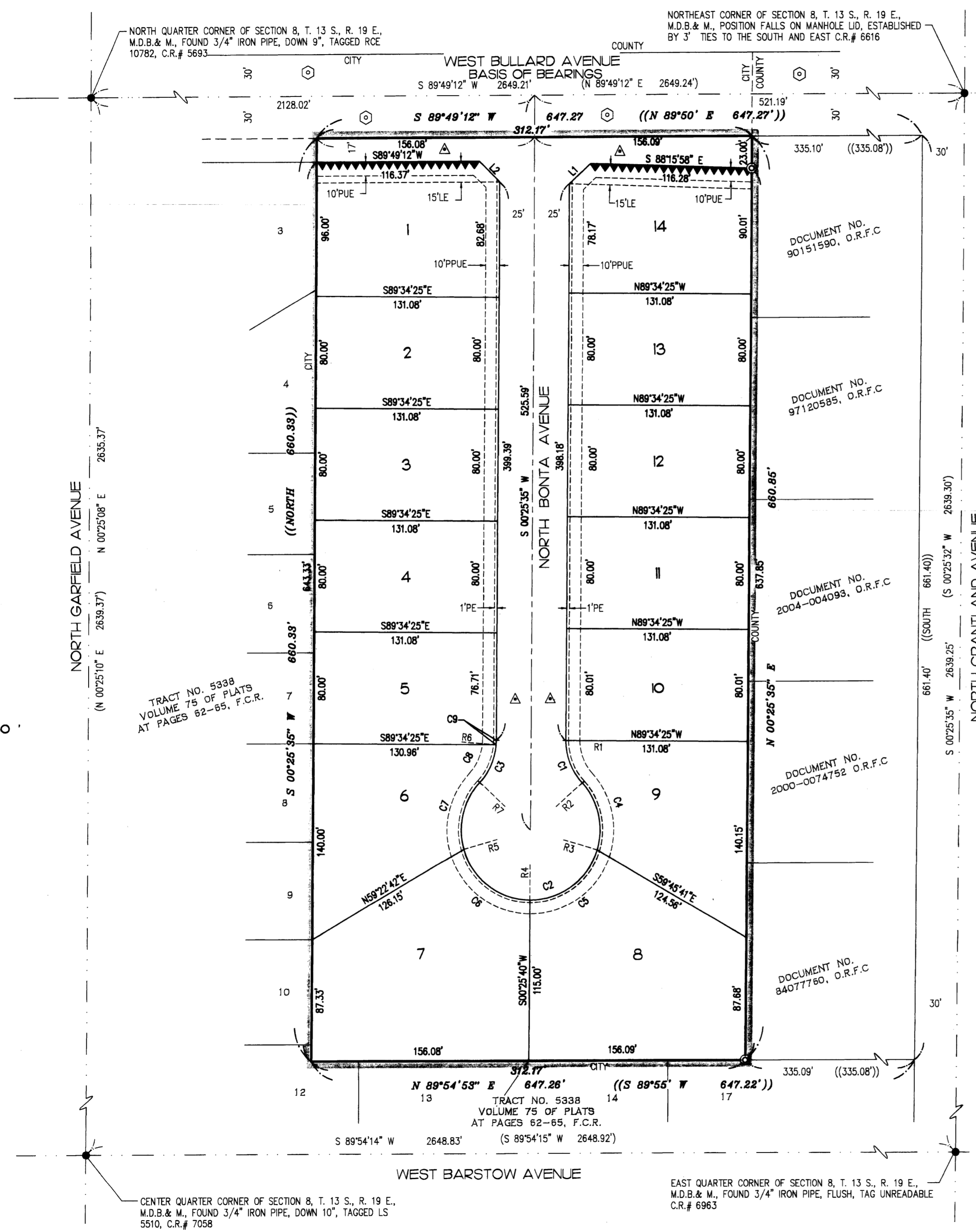
RADIAL	BEARING
R1	N89°34'25"W
R2	N47°53'22"E
R3	S73°18'49"E
R4	S00°25'34"W
R5	S74°09'57"W
R6	S85°23'00"E
R7	N47°02'13"W

**CURVE TABLE**

CURVE	RADIUS	LENGTH	DELTA
C1	45.00'	33.41'	42°32'13"
C2	50.00'	231.32'	265°04'25"
C3	45.00'	33.41'	42°32'12"
C4	50.00'	51.31'	58°47'49"
C5	50.00'	64.35'	73°44'23"
C6	50.00'	64.35'	73°44'23"
C7	50.00'	51.31'	58°47'50"
C8	45.00'	30.12'	38°20'47"
C9	45.00'	3.29'	4°11'25"

**LINE TABLE**

LINE	BEARING	LENGTH
L1	N46°04'48"E	20.73'
L2	N44°52'37"W	20.70'



TRACT NO. 5338  
VOLUME 75 OF PLATS  
AT PAGES 62-65, F.C.R.

TRACT NO. 5338  
VOLUME 75 OF PLATS  
AT PAGES 62-65, F.C.R.

CENTER QUARTER CORNER OF SECTION 8, T. 13 S., R. 19 E., M.D.B. & M., FOUND 3/4" IRON PIPE, DOWN 10", TAGGED LS 5510, C.R.# 7058

EAST QUARTER CORNER OF SECTION 8, T. 13 S., R. 19 E., M.D.B. & M., FOUND 3/4" IRON PIPE, FLUSH, TAG UNREADABLE C.R.# 6963