



Street Names, Addresses and (Lot Numbers) for T5606

Prepared on Tue Apr 02 13:37:02 2013

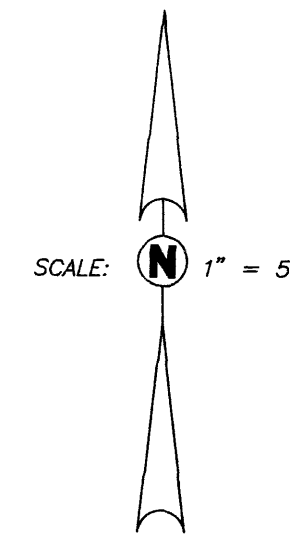


TRACT MAP 5606

A CONDOMINIUM DEVELOPMENT
IN THE CITY OF FRESNO, FRESNO COUNTY, CALIFORNIA

SURVEYED AND PLATTED IN JULY, 2006
BY: BLAIR, CHURCH & FLYNN CONSULTING ENGINEERS
451 CLOVIS AVENUE, CLOVIS, CALIFORNIA

CONSISTING OF TWO SHEETS
SHEET 2 OF 2



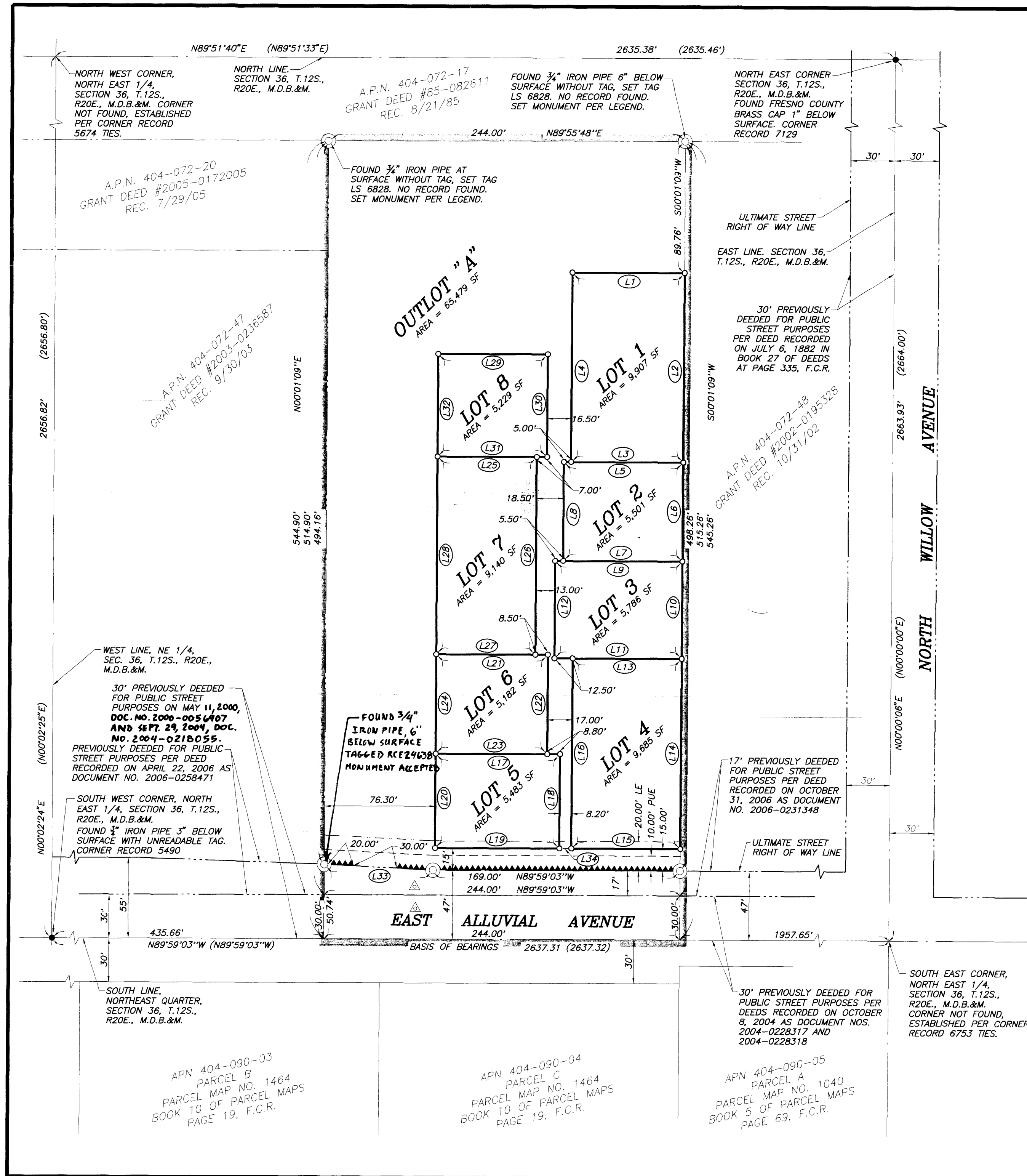
LEGEND

- MONUMENT FOUND AS NOTED AND ACCEPTED
- INDICATES MONUMENT SET 3/4" IRON PIPE 30" LONG WITH TOP OF PIPE 2" BELOW SURFACE TAGGED R.C.E. 26,309, UNLESS OTHERWISE NOTED. SET AT ALL LOT CORNERS, ANGLE POINTS AND BEGINNING AND END OF ALL CURVES.
- SET 1" O.D. X 30" IRON PIPE, UP 4" IN 6" X 30" CONCRETE MONUMENT. TAGGED LS 6828, UNLESS OTHERWISE NOTED.
- - - - - INDICATES RIGHT OF WAY LINE
- - - - - INDICATES PROPERTY LINE
- - - - - INDICATES SECTION OR CENTER LINE
- - - - - INDICATES PARCEL LINE BEING CREATED BY THIS PARCEL MAP
- - - - - INDICATES SECTIONAL BREAKDOWN LINE
- BLUE BORDER INDICATES THE LIMITS OF THIS SUBDIVISION
- - - - - INDICATES LANDSCAPE EASEMENT
- - - - - INDICATES PUBLIC UTILITY EASEMENT
- ▲ INDICATES RELINQUISHMENT OF DIRECT VEHICULAR ACCESS RIGHTS
- CFR CALCULATED FROM RECORD
- F.C.R. FRESNO COUNTY RECORDS
- COR. REC. CORNER RECORD ON FILE WITH THE FRESNO COUNTY SURVEYOR
- PUE INDICATES PUBLIC UTILITY EASEMENT NOW OFFERED FOR DEDICATION FOR PUBLIC USE
- LE INDICATES LANDSCAPE EASEMENT NOW OFFERED FOR DEDICATION FOR PUBLIC USE TO BE MAINTAINED BY THE HOMEOWNERS ASSOCIATION
- O.R.F.C. OFFICIAL RECORDS OF FRESNO COUNTY
- () RECORD DATA AS PER RECORD OF SURVEY, RECORDED IN BOOK 35 OF RECORD OF SURVEYS AT PAGE 3 IN FRESNO COUNTY RECORDS
- △ INDICATES PORTIONS NOW OFFERED FOR DEDICATION FOR PUBLIC STREET PURPOSES FOR PUBLIC USE

LINE TABLE		
NO.	BEARING	DISTANCE
(L1)	S89°59'03"E	76.50'
(L2)	S00°01'09"W	129.50'
(L3)	N89°59'03"W	76.50'
(L4)	N00°01'09"E	129.50'
(L5)	S89°59'03"E	81.50'
(L6)	S00°01'09"W	67.50'
(L7)	N89°59'03"W	81.50'
(L8)	N00°01'09"E	67.50'
(L9)	S89°59'03"E	87.00'
(L10)	S00°01'09"W	66.50'
(L11)	N89°59'03"W	87.00'
(L12)	N00°01'09"E	66.50'
(L13)	S89°59'03"E	74.50'
(L14)	S00°01'09"W	130.00'
(L15)	N89°59'03"W	74.50'
(L16)	N00°01'09"E	130.00'
(L17)	S89°59'03"E	85.00'
(L18)	S00°01'09"W	64.50'
(L19)	N89°59'03"W	85.00'
(L20)	N00°01'09"E	64.50'
(L21)	S89°59'03"E	76.20'
(L22)	S00°01'09"W	68.00'
(L23)	N89°59'03"W	76.20'
(L24)	N00°01'09"E	68.00'
(L25)	S89°59'03"E	67.70'
(L26)	S00°01'09"W	135.00'
(L27)	N89°59'03"W	67.70'
(L28)	N00°01'09"E	135.00'
(L29)	S89°59'03"E	74.70'
(L30)	S00°01'09"W	70.00'
(L31)	N89°59'03"W	74.70'
(L32)	N00°01'09"E	70.00'
(L33)	N87°07'54"W	75.09'
(L34)	N89°59'03"W	8.20'

BASIS OF BEARINGS

THE SOUTH LINE OF THE NORTHEAST QUARTER OF SECTION 36, T. 12 S., R. 20 E., M.D.B. & M. IS TAKEN AS N89°59'03"W AS SHOWN ON THE RECORD OF SURVEY RECORDED OCTOBER 7, 1987 IN BOOK 35 OF RECORD OF SURVEYS AT PAGE 3, FRESNO COUNTY RECORDS.



Prepared by:
**Blair,
Church
Flynn**
CONSULTING ENGINEERS
451 Clovis Avenue, Suite 200
Clovis, California 93612
Tel. (559) 326-1400
Fax. (559) 326-1500

Drawing: P:\205-0221\Draw-Site\Draw\20522\FINAL\FM.dwg; FPM2 - BCF.cib
Plot By: Page Sep 14, 2007 - 2:08pm