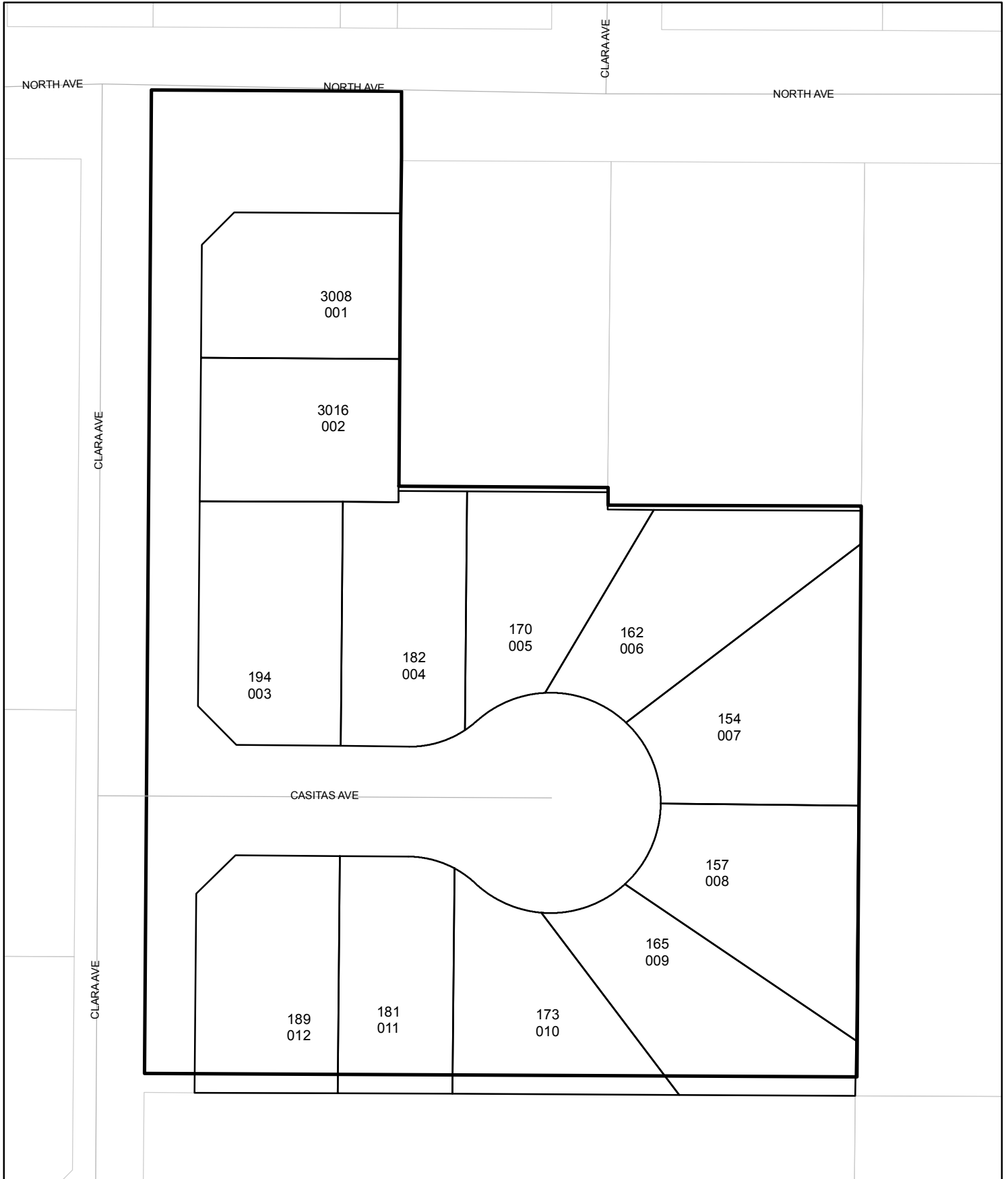




# Street Names, Addresses and (Lot Numbers) for T5603

Prepared on Mon Oct 22 14:04:50 2018





# FINAL MAP OF TRACT NO. 5603

BEING A RESUBDIVISION OF A PORTION OF LOT 65 OF THE MAP OF CENTRAL CALIFORNIA COLONY RECORDED IN BOOK 2 OF PLATS AT PAGE 1, FRESNO COUNTY RECORDS  
 IN THE CITY OF FRESNO, FRESNO COUNTY, CALIFORNIA SURVEYED AND PLATTED IN FEBRUARY 2005 BY YAMABE & HORN ENGINEERING, INC. CONSISTING OF THREE SHEETS, SHEET 3 OF 3

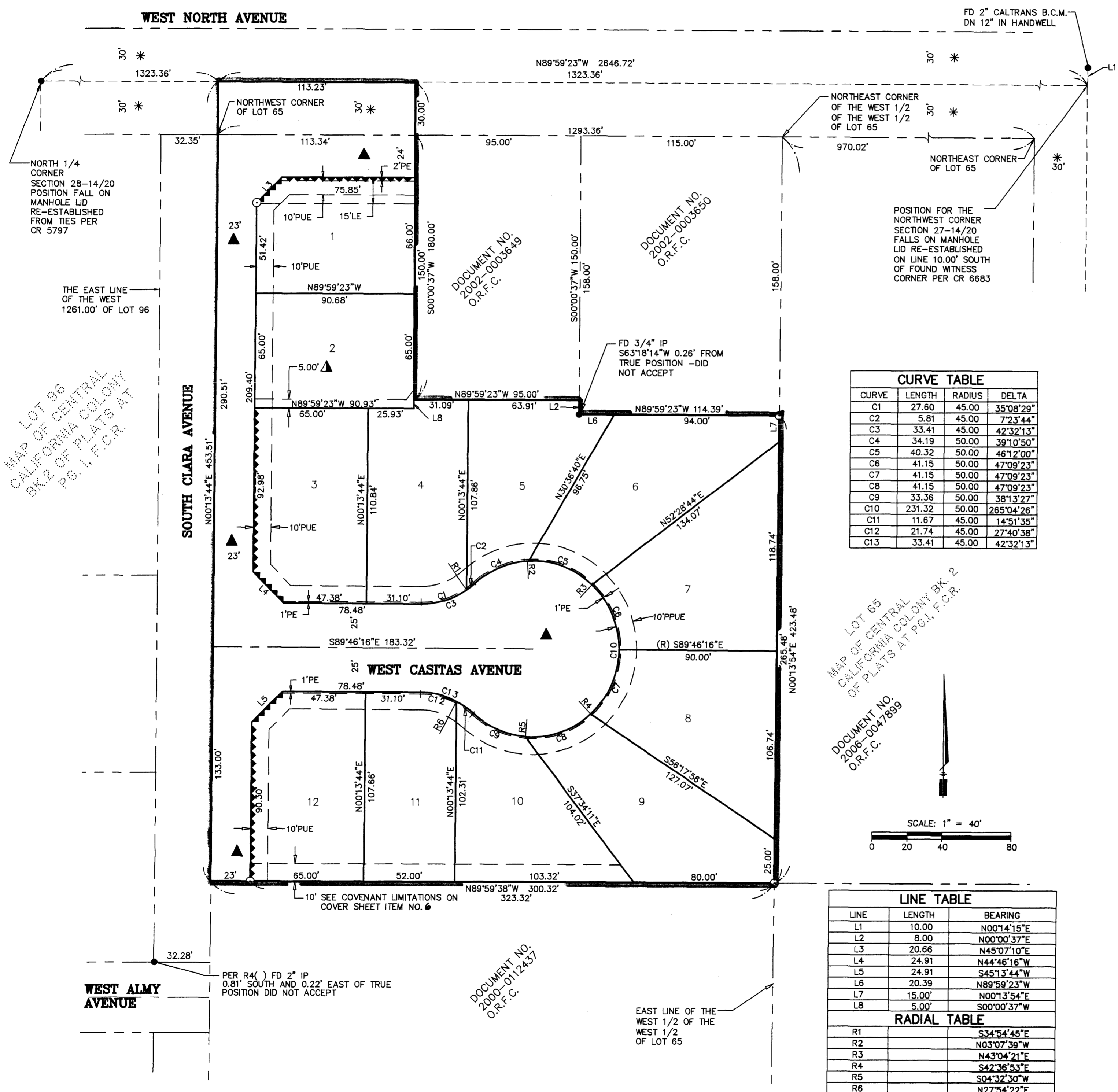
**LEGEND:**

- MONUMENT FOUND AND ACCEPTED UNLESS OTHERWISE NOTED.
- SET 3/4"x 30" IRON PIPE UP 4" IN 6" DIAMETER X 30" P.C.C. MONUMENT, DOWN 6" BELOW GROUND, TAGGED LS 8204
- R1( ) RECORD DATA PER PARCEL MAP NO. 7586, RECORDED IN BK. 55 OF PARCEL MAPS AT PG. 23, F.C.R.
- R2( ) RECORD DATA PER PARCEL MAP NO. 5743, RECORDED IN BK. 37 OF PARCEL MAPS AT PG. 66, F.C.R.
- R3( ) RECORD DATA PER QUITCLAIM DEED RECORDED SEPTEMBER 15, 2000 AS DOCUMENT NO. 2000-0112437, O.R.F.C.
- R4( ) RECORD DATA PER PARCEL MAP NO.76-65, RECORDED IN BK. 24 OF PARCEL MAPS AT PG. 94, F.C.R.
- R5( ) RECORD DATA PER PARCEL MAP NO. 73-71, RECORDED IN BK. 10 OF PARCEL MAPS AT PG. 60, F.C.R.
- ▲ FRESNO METROPOLITAN FLOOD CONTROL EASEMENT RECORDED June 9, 2002, AS DOCUMENT NO. 2002-0077226, O.R.F.C.
- ▲ NOW OFFERED FOR DEDICATION FOR PUBLIC STREET AND UTILITY PURPOSES.
- \* PREVIOUSLY ACCEPTED FOR PUBLIC ROAD PURPOSES PER FRESNO COUNTY BOARD OF SUPERVISORS RESOLUTION ENDORSED FEBRUARY 7, 1913 AND FILED IN VOL. 29 OF MISCELLANEOUS AT PG. 9, F.C.R.
- PPUE PLANTING AND PUBLIC UTILITY EASEMENT NOW OFFERED FOR DEDICATION FOR PUBLIC USE.
- PUE PUBLIC UTILITY EASEMENT NOW OFFERED FOR DEDICATION FOR PUBLIC USE.
- LE LANDSCAPE EASEMENT NOW OFFERED FOR DEDICATION FOR PUBLIC USE.
- PE PEDESTRIAN EASEMENT NOW OFFERED FOR DEDICATION FOR PUBLIC USE.
- FD FOUND
- O.R.F.C. OFFICIAL RECORDS FRESNO COUNTY
- F.C.R. FRESNO COUNTY RECORDS
- (R) RADIAL BEARING
- IP IRON PIPE
- B.C.M. BRASS CAP MONUMENT
- F.C.B.C.M. FRESNO COUNTY BRASS CAP MONUMENT
- C.R. CORNER RECORD ON FILE WITH THE FRESNO COUNTY SURVEYOR
- BLUE BORDER INDICATES LIMITS OF THIS SUBDIVISION
- PROPOSED PROPERTY LINE
- EXISTING PROPERTY LINE
- SECTION LINE
- INDICATES RELINQUISHMENT OF DIRECT ACCESS RIGHTS
- INDICATES EXTENSION OF LINE TO DIMENSION POINT AS SHOWN
- EASEMENT LINE

**NOTE:**

SET 3/4"x 30" IRON PIPE DOWN 6" TAGGED "LS 8204" AT ALL LOT CORNERS, ANGLE POINTS AND POINTS OF CURVATURE.

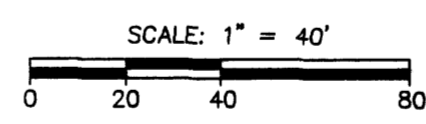
PREPARED BY:  
**YAMABE & HORN ENGINEERING, INC.**  
 1300 EAST SHAW AVENUE, SUITE 176  
 FRESNO, CA 93710  
 PH. 559-244-3123 FAX 559-244-3120



**CURVE TABLE**

CURVE	LENGTH	RADIUS	DELTA
C1	27.60	45.00	35°08'29"
C2	5.81	45.00	7°23'44"
C3	33.41	45.00	42°32'13"
C4	34.19	50.00	39°10'50"
C5	40.32	50.00	46°12'00"
C6	41.15	50.00	47°09'23"
C7	41.15	50.00	47°09'23"
C8	41.15	50.00	47°09'23"
C9	33.36	50.00	38°13'27"
C10	231.32	50.00	265°04'26"
C11	11.67	45.00	14°51'35"
C12	21.74	45.00	27°40'38"
C13	33.41	45.00	42°32'13"

LOT 65  
 MAP OF CENTRAL CALIFORNIA COLONY BK. 2 OF PLATS AT PG. 1, F.C.R.  
 DOCUMENT NO. 2006-0047899  
 O.R.F.C.



**LINE TABLE**

LINE	LENGTH	BEARING
L1	10.00	N00°14'15"E
L2	8.00	N00°00'37"E
L3	20.66	N45°07'10"E
L4	24.91	N44°46'16"W
L5	24.91	S45°13'44"W
L6	20.39	N89°59'23"W
L7	15.00	N00°13'54"E
L8	5.00	S00°00'37"W

**RADIAL TABLE**

R	BEARING
R1	S34°54'45"E
R2	N03°07'39"W
R3	N43°04'21"E
R4	S42°36'53"E
R5	S04°32'30"W
R6	N27°54'22"E

LOT 96  
 MAP OF CENTRAL CALIFORNIA COLONY BK. 2 OF PLATS AT PG. 1, F.C.R.

SOUTH CLARA AVENUE

WEST CASTAS AVENUE

WEST ALMY AVENUE

NORTH 1/4 CORNER SECTION 28-14/20 POSITION FALLS ON MANHOLE LID RE-ESTABLISHED FROM TIES PER CR 5797

THE EAST LINE OF THE WEST 1261.00' OF LOT 96

POSITION FOR THE NORTHWEST CORNER SECTION 27-14/20 FALLS ON MANHOLE LID RE-ESTABLISHED ON LINE 10.00' SOUTH OF FOUND WITNESS CORNER PER CR 6683

DOCUMENT NO. 2002-0003649  
 O.R.F.C.

DOCUMENT NO. 2000-0112437  
 O.R.F.C.

EAST LINE OF THE WEST 1/2 OF THE WEST 1/2 OF LOT 65

PER R4( ) FD 2" IP 0.81' SOUTH AND 0.22' EAST OF TRUE POSITION DID NOT ACCEPT

FD 3/4" IP S63°18'14"W 0.26' FROM TRUE POSITION -DID NOT ACCEPT

10' SEE COVENANT LIMITATIONS ON COVER SHEET ITEM NO. 6