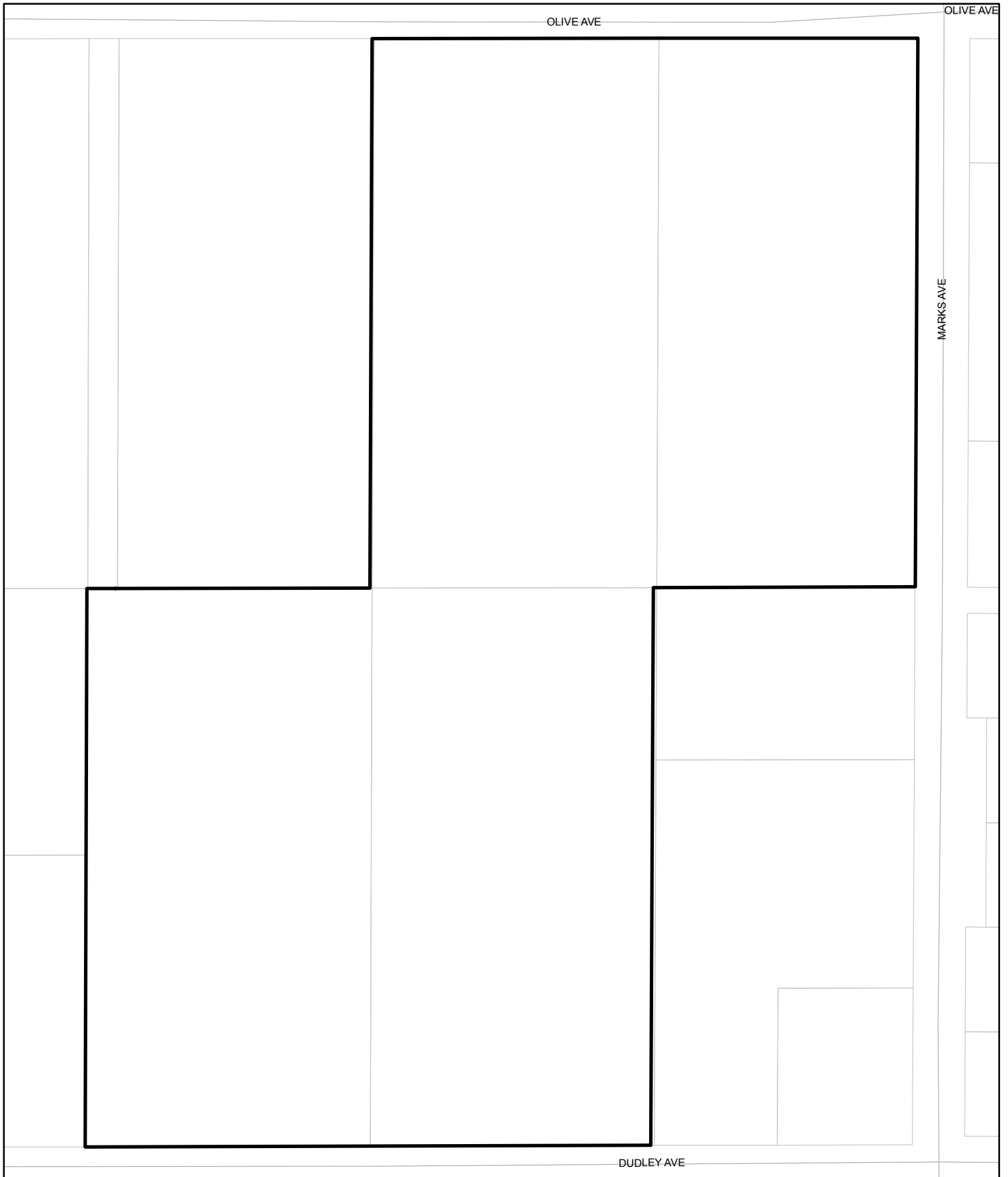




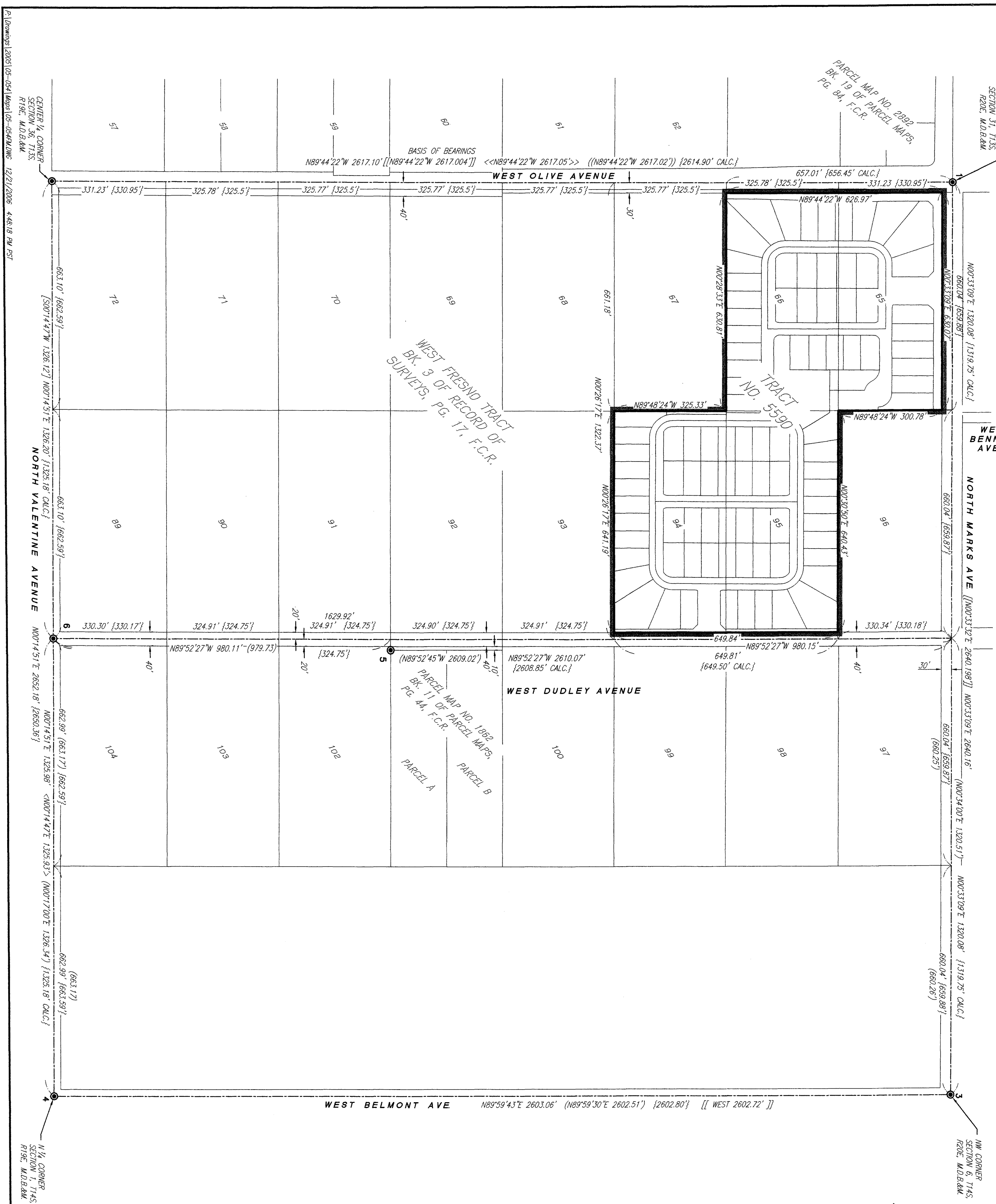
# Street Names, Addresses and (Lot Numbers) for T5590

Prepared on Mon Oct 22 14:09:10 2018



# TRACT MAP NO. 5590

A PLANNED DEVELOPMENT IN THE CITY OF FRESNO, FRESNO COUNTY, CALIFORNIA  
 SURVEYED AND PLATTED IN SEPTEMBER 2006 BY PRECISION CIVIL ENGINEERING, INC.  
 CONSISTING OF THREE SHEETS, SHEET TWO OF THREE

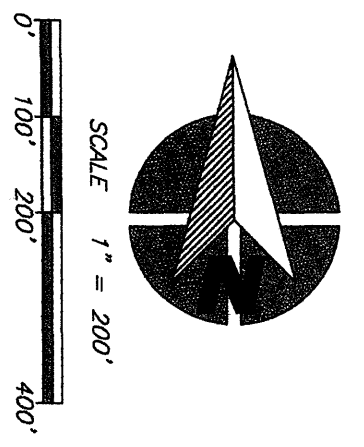


**LEGEND:**

- ⊙ MONUMENTS FOUND AND ACCEPTED AS NOTED
- BLUE BORDER INDICATES THE LIMITS OF THIS SUBMISSION
- ( ) DATA PER PARCEL MAP NO. 1882, BOOK 11 OF PARCEL MAPS, PAGE 41, F.C.R.
- [ ] DATA PER RECORD OF SURVEY, BOOK 48 OF RECORD OF SURVEYS, PAGE 33, F.C.R.
- <> DATA PER PARCEL MAP NO. 2892, BOOK 55 OF PARCEL MAPS, PAGES 32 & 33, F.C.R.
- (( )) DATA PER PARCEL MAP NO. 2018, BOOK 13 OF PARCEL MAPS, PAGE 14, F.C.R.
- [ ] DATA PER PARCEL MAP NO. 1380, BOOK 6 OF PARCEL MAPS, PAGE 98, F.C.R.
- { } DATA PER WEST FRESNO TRACT, BOOK 3 OF RECORD OF SURVEYS, PAGE 17, F.C.R.
- F.C.R. FRESNO COUNTY RECORDS
- C.R. FRESNO COUNTY CORNER RECORD

**MONUMENT TABLE**

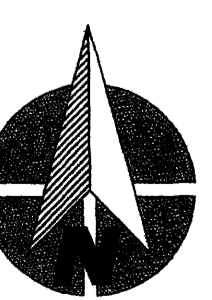
#	LOCATION AND DESCRIPTION
1	WEST 1/4 CORNER SECTION 31, T14S, R20E, M.D.B.A.M., CORNER FALLS ON MANHOLE, ESTABLISHED BY SWING TIES PER C.R.# 2961
2	CENTER 1/4 CORNER SECTION 36, T13S, R19E, M.D.B.A.M., FOUND FRESNO COUNTY BRASS CAP MONUMENT IN MONUMENT WELL PER C.R.# 2911
3	NORTHWEST CORNER SECTION 6, T14S, R20E, M.D.B.A.M., CORNER FALLS ON MANHOLE, ESTABLISHED BY SWING TIES PER C.R.# 7277 (NORTHERLY LOCATION OF DOUBLE CORNER)
4	NORTH 1/4 CORNER SECTION 1, T14S, R19E, M.D.B.A.M., FOUND FRESNO COUNTY BRASS CAP MONUMENT DOWN 3" PER C.R.# 2951
5	NORTHWEST CORNER PARCEL A, PARCEL MAP NO. 1882, BOOK 11 OF PARCEL MAPS, PAGE 41, F.C.R., FOUND 1/4" IRON PIPE, NO TAG, FLUSH, 0.07' SOUTH OF POSITION



P:\Drawings\2005\05-054\Map5\05-054\FNL.DWG 12/21/2006 4:48:18 PM PST  
 CENTER 1/4 CORNER SECTION 36, T13S, R19E, M.D.B.A.M.  
 WEST OLIVE AVENUE  
 WEST BELMONT AVE  
 NORTH VALENTINE AVENUE  
 WEST DUDLEY AVENUE  
 WEST BENNETT AVENUE  
 NORTH MARKS AVE  
 NW CORNER SECTION 6, T14S, R20E, M.D.B.A.M.  
 N1/4 CORNER SECTION 1, T14S, R19E, M.D.B.A.M.

# TRACT MAP NO. 5590

A PLANNED DEVELOPMENT IN THE CITY OF FRESNO, FRESNO COUNTY, CALIFORNIA  
 SURVEYED AND PLATTED IN SEPTEMBER 2006 BY PRECISION CIVIL ENGINEERING, INC.  
 CONSISTING OF THREE SHEETS, SHEET THREE OF THREE



PARCEL MAP NO. 2892

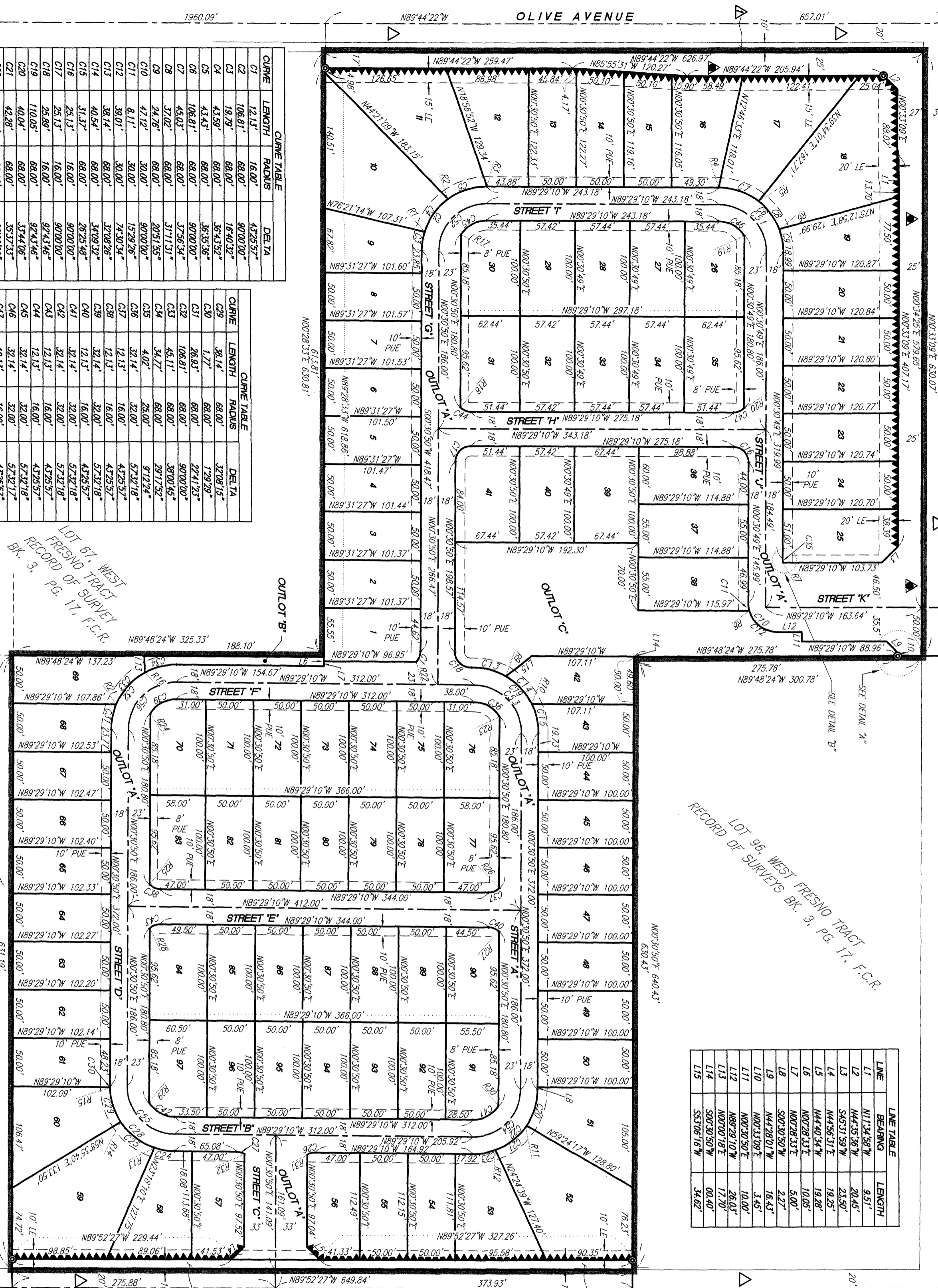
WEST 1/4 CORNER SECTION 31, T13S, R9E, M.D.B.M., LOCATION FALLS ON MANHOLE POSITION ESTABLISHED BY SWING TIES PER C.R. # 2961

NORTH MARKS AVENUE

660.04'

660.04'

NORTHWEST CORNER SECTION 6, T14S, R20E, M.D.B.M., LOCATION FALLS ON MANHOLE POSITION ESTABLISHED BY SWING TIES PER C.R. # 7277



CURVE	LENGTH	RADIUS	DELTA
C1	12.13'	68.00'	4.37557°
C2	106.81'	68.00'	90.00000°
C3	19.29'	68.00'	16.4032°
C4	43.59'	68.00'	36.4352°
C5	43.43'	68.00'	36.3536°
C6	106.81'	68.00'	90.00000°
C7	45.02'	68.00'	37.5634°
C8	37.02'	68.00'	31.1131°
C9	24.76'	68.00'	20.5155°
C10	47.12'	30.00'	90.00000°
C11	8.11'	30.00'	15.2926°
C12	38.01'	30.00'	74.3034°
C13	38.14'	68.00'	37.0878°
C14	40.54'	68.00'	34.0939°
C15	31.37'	68.00'	26.2548°
C16	25.13'	68.00'	20.00000°
C17	25.13'	68.00'	20.00000°
C18	25.89'	68.00'	20.4346°
C19	110.05'	68.00'	92.4346°
C20	40.04'	68.00'	33.34106°
C21	42.28'	68.00'	35.7333°
C22	106.81'	68.00'	90.00000°
C23	24.49'	68.00'	20.3821°
C24	21.89'	68.00'	18.2602°
C25	43.02'	68.00'	37.5634°
C26	8.38'	68.00'	16.00000°
C27	8.38'	68.00'	16.00000°
C28	106.81'	68.00'	90.00000°

CURVE	LENGTH	RADIUS	DELTA
C29	38.14'	68.00'	37.0815°
C30	1.77'	68.00'	1.7929°
C31	28.83'	68.00'	27.4123°
C32	106.81'	68.00'	90.00000°
C33	49.17'	68.00'	38.0045°
C34	34.77'	68.00'	29.1735°
C35	4.02'	25.00'	9.1224°
C36	32.14'	32.00'	57.3218°
C37	12.13'	16.00'	43.2552°
C38	12.13'	16.00'	43.2552°
C39	38.14'	32.00'	57.3218°
C40	38.14'	32.00'	57.3218°
C41	12.13'	16.00'	43.2552°
C42	32.14'	32.00'	57.3218°
C43	12.13'	16.00'	43.2552°
C44	12.13'	16.00'	43.2552°
C45	32.14'	32.00'	57.3218°
C46	32.14'	32.00'	57.3218°
C47	12.13'	16.00'	43.2552°
C48	78.54'	50.00'	90.00000°
C49	78.54'	50.00'	90.00000°
C50	78.54'	50.00'	90.00000°
C51	78.54'	50.00'	90.00000°
C52	78.54'	50.00'	90.00000°
C53	78.54'	50.00'	90.00000°
C54	78.54'	50.00'	90.00000°
C55	78.54'	50.00'	90.00000°
C56	78.54'	50.00'	90.00000°

LINE	BEARING	LENGTH
L1	N1134.58°W	9.51'
L2	N4435.56°W	20.45'
L3	S4531.59°W	23.50'
L4	N4435.56°E	19.25'
L5	N4440.54°W	19.28'
L6	N00728.33°E	10.05'
L7	N00728.33°E	5.00'
L8	S00230.50°W	2.27'
L9	N4428.01°W	16.43'
L10	N0033109°E	3.45'
L11	N0033109°E	10.00'
L12	N892910°W	28.03'
L13	N007018°E	17.70'
L14	S003050°W	00.40'
L15	S33106.16°W	34.62'

RADIAL	BEARING
R1	N7248.59°W
R2	N6704.46°W
R3	N003050°E
R4	N003050°E
R5	N8727.94°E
R6	N8938.54°E
R7	N8718.29°E
R8	N7501.24°E
R9	N2955.29°E
R10	N64705.01°E
R11	S5545.04°E
R12	S2900.231°E
R13	S1958.52°W
R14	N6533.06°E
R15	S8901.21°W
R16	N2847.02°W
R17	N5701.28°W

RADIAL	BEARING
R18	N4356.47°E
R19	S8703.07°W
R20	S4255.08°E
R21	N6647.48°W
R22	N46103.13°W
R23	N69703.07°E
R24	N5701.28°W
R25	N4356.47°E
R26	N4255.07°W
R27	N4255.07°W
R28	N4255.07°W
R29	N69703.07°E
R30	N5701.28°W
R31	N2929.10°W
R32	N003050°E

- LEGEND:**
- MONUMENTS FOUND AND ACCEPTED AS NOTED (SEE SHEET 2)
  - SET 3/4" x 30" IRON PIPE, UP 4" IN 6" x 30" CONCRETE, TAGGED LS 5096, DOWN 6"
  - AREA PREVIOUSLY DEDICATED FOR PUBLIC STREET PURPOSES PER WEST FRESNO TRACT, BK. 3 OF RECORD OF SURVEYS, PG. 17, FRESNO COUNTY RECORDS IN BOOK 5305, PAGES 336 & 337, OFFICIAL RECORDS OF FRESNO COUNTY
  - INDICATES AREA NOW OFFERED FOR DEDICATION FOR PUBLIC STREET PURPOSES.
  - INDICATES REINSTATEMENT OF DIRECT ACCESS RIGHTS
  - BLUE BORDER INDICATES THE LIMITS OF THIS SUBDIVISION
  - C.R. FRESNO COUNTY CORNER RECORD
  - INDICATES EASEMENT NOW OFFERED FOR DEDICATION FOR PUBLIC UTILITIES PURPOSES
  - PUE INDICATES EASEMENT NOW OFFERED FOR DEDICATION FOR LANDSCAPING PURPOSES
  - SET 1/2" x 30" IRON PIPE, TAGGED LS 5096, DOWN 6" AT ALL LOT CORNERS, ANGLE POINTS, BEGINNING AND ENDING OF CURVES.
  - THE PURPOSE OF OUTLOT A IS FOR NON-EXCLUSIVE WAREHOUSE/STORAGE, ANGLE DRAINAGE, AND PUBLIC UTILITIES PURPOSES.
  - THE PURPOSE OF OUTLOTS B AND C IS FOR OPEN SPACE.

VALENTINE AVENUE  
 1500'14.47' 1326.127'

LOT 67, WEST FRESNO TRACT RECORD OF SURVEY BK. 3, PG. 17, F.C.R.

LOT 93, WEST FRESNO TRACT RECORD OF SURVEY BK. 3, PG. 17, F.C.R.

SOUTHWEST CORNER OF NW 1/4 OF SECTION 36, T13S, R19E, M.D.B.M., FOUND FRESNO COUNTY BRASS CAP MONUMENT, SHARPED REC 12789, FLUSH IN CONCRETE, PER C.R. # 2997

NORTH 1/4 CORNER SECTION 36, T13S, R19E, M.D.B.M.