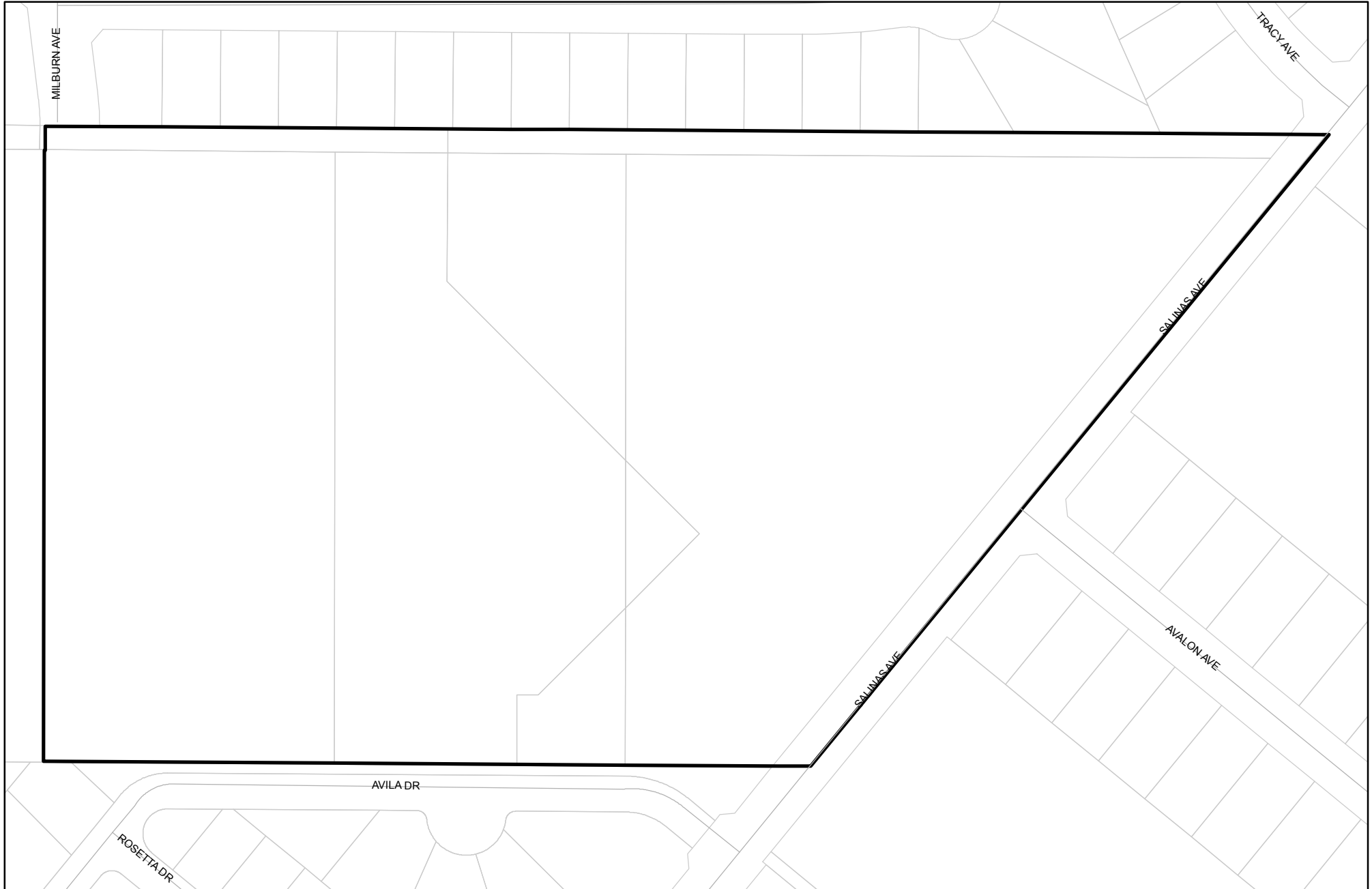
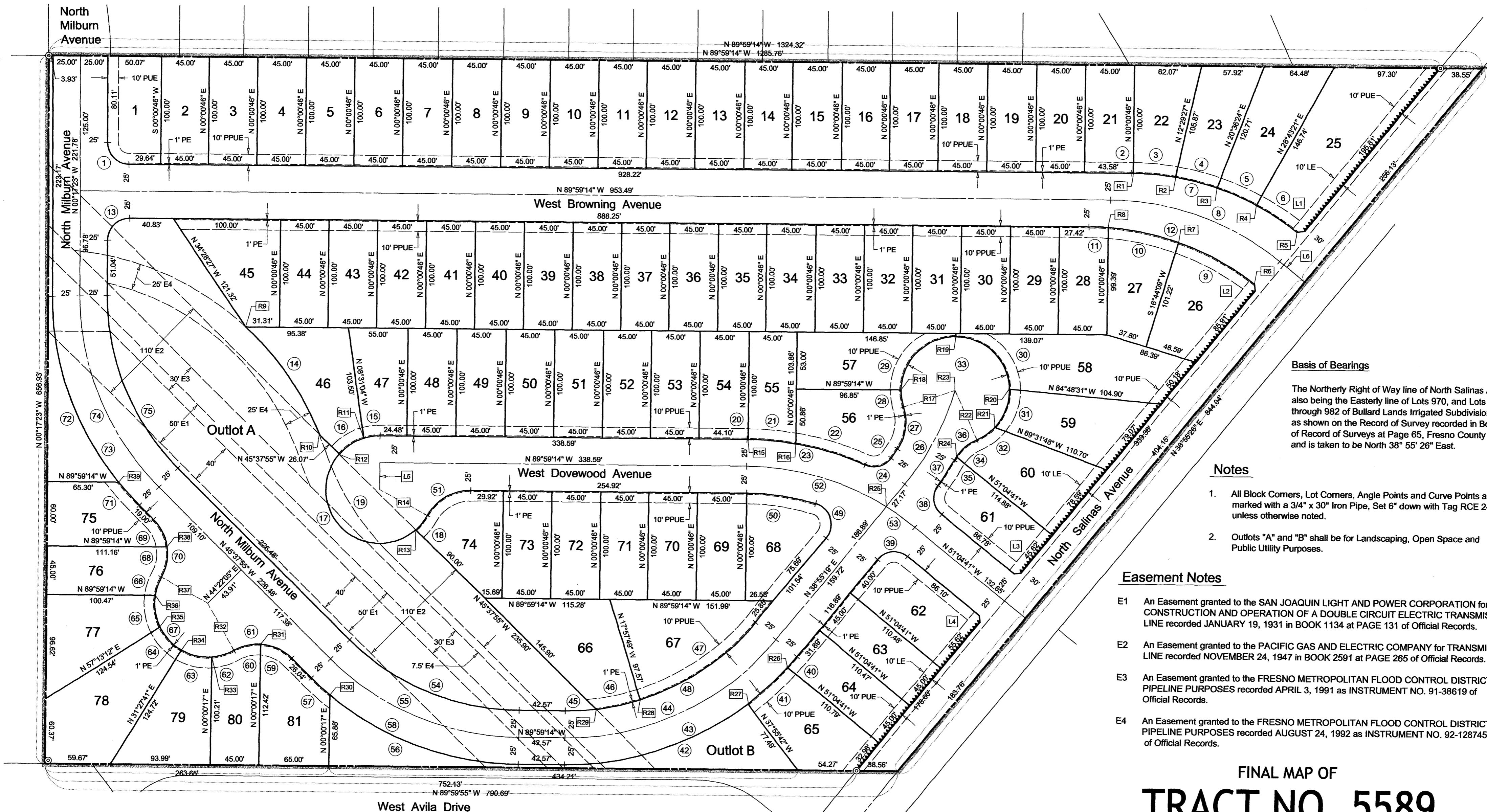




Prepared on Tue Apr 02 13:39:50 2013

Street Names, Addresses and (Lot Numbers) for T5589





Basis of Bearings
 The Northerly Right of Way line of North Salinas Avenue, also being the Easterly line of Lots 970, and Lots 979 through 982 of Bullard Lands Irrigated Subdivision No. 6, as shown on the Record of Survey recorded in Book 43 of Record of Surveys at Page 65, Fresno County Records, and is taken to be North 38° 55' 26" East.

- Notes**
- All Block Corners, Lot Corners, Angle Points and Curve Points are marked with a 3/4" x 30" Iron Pipe, Set 6" down with Tag RCE 24638 unless otherwise noted.
 - Outlots "A" and "B" shall be for Landscaping, Open Space and Public Utility Purposes.

- Easement Notes**
- An Easement granted to the SAN JOAQUIN LIGHT AND POWER CORPORATION for CONSTRUCTION AND OPERATION OF A DOUBLE CIRCUIT ELECTRIC TRANSMISSION LINE recorded JANUARY 19, 1931 in BOOK 1134 at PAGE 131 of Official Records.
 - An Easement granted to the PACIFIC GAS AND ELECTRIC COMPANY for TRANSMISSION LINE recorded NOVEMBER 24, 1947 in BOOK 2591 at PAGE 265 of Official Records.
 - An Easement granted to the FRESNO METROPOLITAN FLOOD CONTROL DISTRICT for PIPELINE PURPOSES recorded APRIL 3, 1991 as INSTRUMENT NO. 91-38619 of Official Records.
 - An Easement granted to the FRESNO METROPOLITAN FLOOD CONTROL DISTRICT for PIPELINE PURPOSES recorded AUGUST 24, 1992 as INSTRUMENT NO. 92-128745 of Official Records.

FINAL MAP OF
TRACT NO. 5589
 CALIFORNIA COLLECTION

A PLANNED DEVELOPMENT
 IN THE CITY OF FRESNO
 COUNTY OF FRESNO - STATE OF CALIFORNIA
 SURVEYED AND PLATTED IN OCTOBER 2006
 BY LARS ANDERSEN & ASSOCIATES, INC.
 CONSISTING OF FOUR SHEETS SHEET 3 OF 4

- Legend**
- Monument found and accepted as noted on Sheet 2 of 5 Sheets.
 - ⊙ Set 3/4" x 30" iron pipe, up 4" in 6" diameter x 30" P.C.C. monument, down 6" with tag RCE 24638 or as noted.
 - PE Indicates Pedestrian Easement now offered for dedication for public use.
 - PUE Indicates Public Utility Easement now offered for dedication for public use.
 - PPUE Indicates Planting and Public Utility Easement now offered for dedication for public use.
 - LE Indicates Pedestrian Easement now offered for dedication for public use.

- Legend**
- △ Indicates area now offered for dedication for Public Street purposes.
 - ⊙ Indicates Curve Data reference.
 - L1 Indicates Line Data reference.
 - R1 Indicates Radial Bearing Data reference.
 - Indicates Relinquishment of Direct Vehicular and Pedestrian Access.
 - The Blue Border indicates the limits of the Subdivision.

