



# Street Names, Addresses and (Lot Numbers) for T5581

Prepared on Mon Oct 22 14:10:35 2018

WARWICK AVE

# FINAL MAP OF TRACT NO. 5581

IN THE CITY OF FRESNO,  
COUNTY OF FRESNO, STATE OF CALIFORNIA,  
BEING A SUBDIVISION OF PARCEL 1 OF PARCEL MAP NO. 3273  
RECORDED IN BOOK 27 OF PARCEL MAPS, PAGE 5, F.C.R.

SURVEYED IN MARCH 2006  
BY QUAD KNOPF INC.

CONSISTING OF 2 SHEETS

### LEGEND

- ▲ MONUMENT FOUND AND ACCEPTED AS DESCRIBED
- △ FOUND AND ACCEPTED 3/4" IRON PIPE TAGGED LS 5277, PER R4 UNLESS NOTED OTHERWISE.
- FOUND AND ACCEPTED 3/4" IRON PIPE TAGGED RCE 19789, PER R2 UNLESS NOTED OTHERWISE.
- ◆ FOUND AND ACCEPTED WITNESS CORNER, 3/4" IRON PIPE TAGGED R.C.E. 26996 ON LOT LINE AT 3.00' OFFSET FROM NEAREST LOT CORNER PER AMENDED TRACT MAP NO. 5530.
- ◇ SET WITNESS CORNER 3/4" X 30" IRON PIPE, DOWN 6", TAGGED PLS 4714 ON LOT LINE AS SHOWN AT 3.00' OFFSET FROM NEAREST LOT CORNER. (DISTANCES SHOWN ARE TO TRUE CORNER) PER CITY OF FRESNO PUBLIC WORKS STANDARD P-38
- SET 3/4" IRON PIPE, 30" LONG, 4" UP IN P.C.C. 6" DIA. MONUMENT TAGGED PLS 4714
- LE LANDSCAPE EASEMENT NOW OFFERED FOR DEDICATION FOR PUBLIC USE
- O.R.F.C. OFFICIAL RECORDS OF FRESNO COUNTY
- F.C.R. FRESNO COUNTY RECORDS
- BLUE BORDER INDICATES LIMITS OF SUBDIVISION
- △△△△△ INDICATES RELINQUISHMENT OF DIRECT VEHICULAR ACCESS RIGHTS
- R1 RECORD DATA PER PARCEL MAP NO. 3273 RECORDED IN BOOK 27 OF PARCEL MAPS, AT PAGE 5, FRESNO COUNTY RECORDS, OR CALCULATED THEREFROM.
- R2 RECORD DATA PER TRACT NO. 4824 RECORDED IN VOLUME 63 OF PLATS, PAGES 80-81, FRESNO COUNTY RECORDS, OR CALCULATED THEREFROM.
- R3 RECORD DATA PER TRACT NO. 5530 RECORDED IN VOLUME 76 OF PLATS, PAGES 1-2, FRESNO COUNTY RECORDS, OR CALCULATED THEREFROM.
- R4 RECORD DATA PER TRACT NO. 4979 RECORDED IN VOLUME 65 OF PLATS, PAGES 50-51, FRESNO COUNTY RECORDS, OR CALCULATED THEREFROM.
- ① 12' EASEMENT FOR STREET PURPOSES GRANTED TO THE CITY OF FRESNO PER DOCUMENT RECORDED AS 2006-0150239, OFFICIAL RECORDS FRESNO COUNTY.
- ② 29' PEDESTRIAN EASEMENT GRANTED TO THE CITY OF FRESNO PER DOCUMENT RECORDED AS 2007-\_\_\_\_\_, OFFICIAL RECORDS FRESNO COUNTY.
- ③ 29' PUBLIC UTILITY EASEMENT GRANTED TO THE CITY OF FRESNO PER DOCUMENT RECORDED AS 2007-\_\_\_\_\_, OFFICIAL RECORDS FRESNO COUNTY.
- ④ 4' PUBLIC STREET EASEMENT GRANTED TO THE CITY OF FRESNO PER DOCUMENT RECORDED AS 2007-\_\_\_\_\_, OFFICIAL RECORDS FRESNO COUNTY.

### NOTES

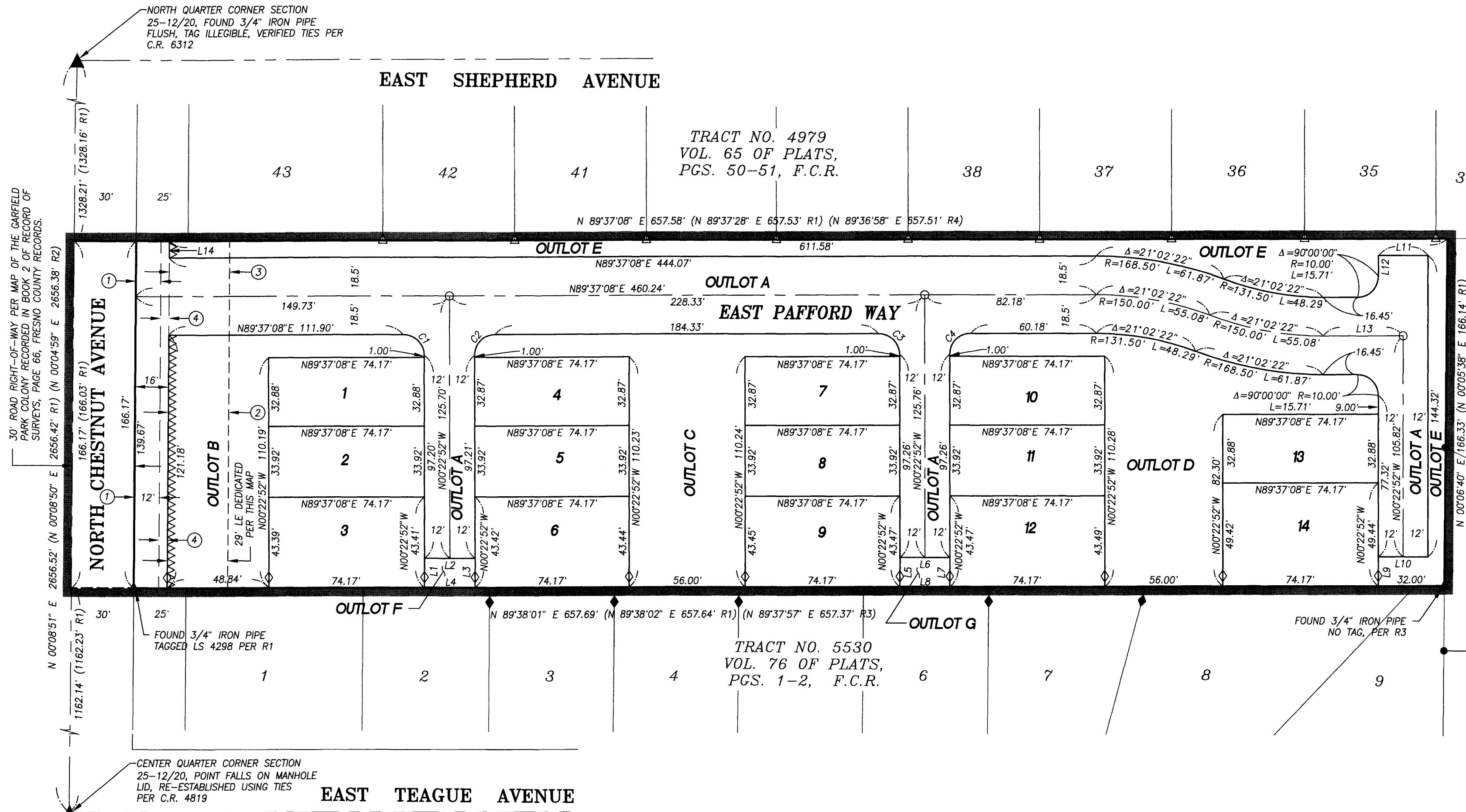
SET 3/4" BY 30" IRON PIPE, 6" BELOW SURFACE, TAGGED PLS 4714, AT ALL LOT CORNERS, BEGINNING AND ENDING OF CURVES AND ANGLE POINTS OF RIGHT-OF-WAY, UNLESS OTHERWISE NOTED.

### BASIS OF BEARINGS

THE NORTH LINE OF THE NORTHEAST QUARTER OF SECTION 25, TOWNSHIP 12 SOUTH, RANGE 20 EAST, MOUNT DIABLO BASE AND MERIDIAN, SHOWN TO BEAR NORTH 89°32'48" EAST, PER PARCEL MAP NO. 3273 RECORDED IN BOOK 27 OF PARCEL MAPS AT PAGE 5, FRESNO COUNTY RECORDS.

### OUTLOT DESIGNATION

OUTLOT "A" IS FOR PRIVATE STREET PURPOSES; OUTLOTS B-G ARE FOR OPEN SPACE AND PEDESTRIAN PURPOSES AND ARE NOW OFFERED FOR DEDICATION AS AN EASEMENT TO THE CITY, OR ITS DESIGNEE, FOR PUBLIC USE FOR LANDSCAPE AND OPEN SPACE PURPOSES, INCLUDING BUT NOT LIMITED TO ALL ACTIVITIES NECESSARY FOR CLEANING, GRADING, CONSTRUCTION, ACCESS, OR MAINTENANCE OF WORKS, IMPROVEMENTS, STRUCTURES AND/OR LANDSCAPING.



LINE	BEARING	LENGTH
L1	N00°22'52"W	14.00'
L2	N89°38'01"E	24.00'
L3	N00°22'52"W	14.00'
L4	N89°38'01"E	24.00'
L5	N00°22'52"W	14.00'
L6	N89°38'01"E	24.00'
L7	N00°22'52"W	14.00'
L8	N89°38'01"E	24.00'
L9	N00°22'52"W	14.00'
L10	N89°38'01"E	24.00'
L11	N89°37'08"E	24.00'
L12	N00°22'52"W	10.00'
L13	N89°37'08"E	38.45'
L14	N00°08'51"E	8.00'

CURVE	DELTA	RADIUS	LENGTH
C1	90°00'00"	10.00'	15.71'
C2	90°00'00"	10.00'	15.71'
C3	90°00'00"	10.00'	15.71'
C4	90°00'00"	10.00'	15.71'

