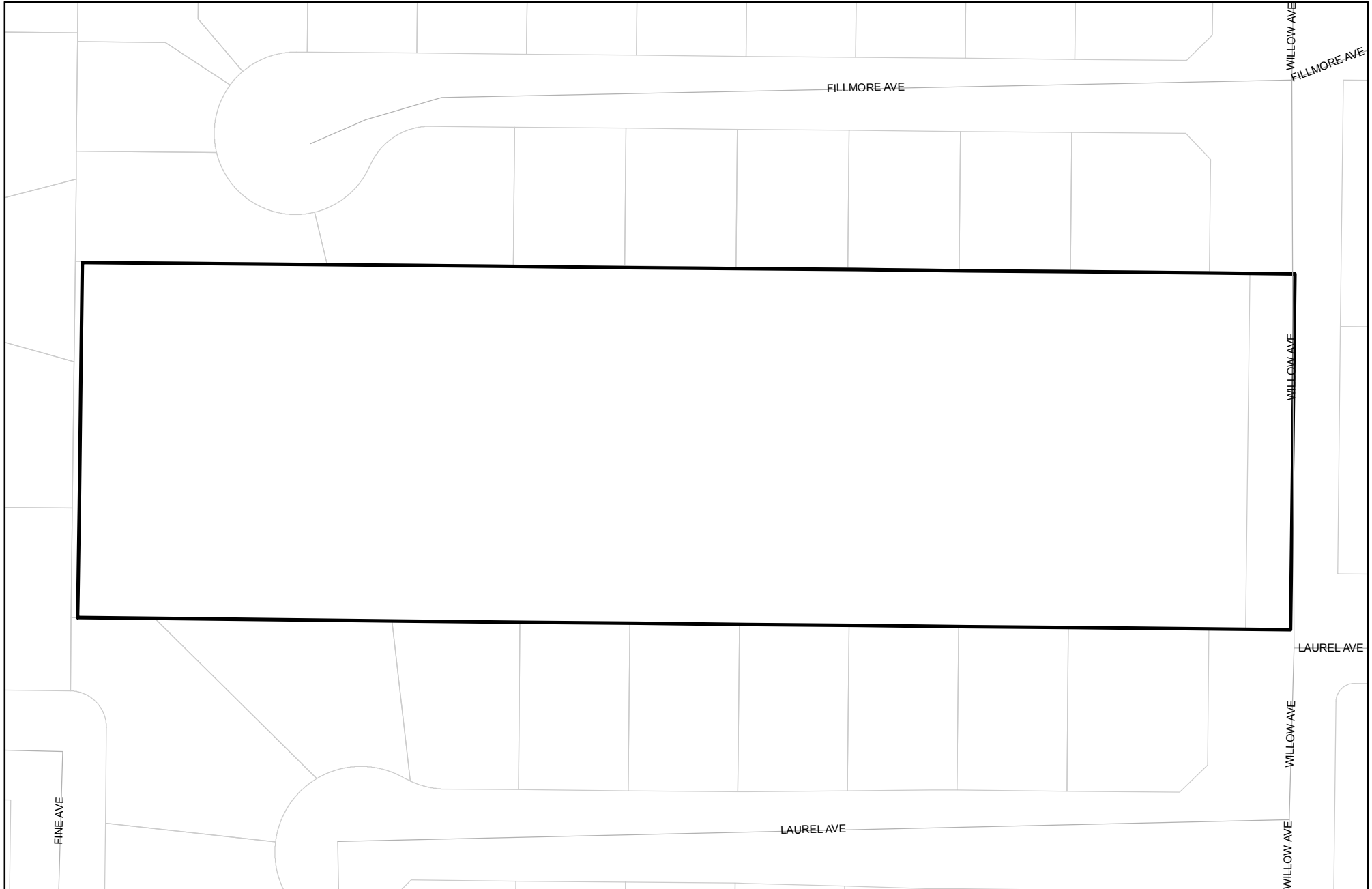




Prepared on Mon Oct 22 14:11:17 2018

# Street Names, Addresses and (Lot Numbers) for T5569



# TRACT NO. 5569

A PLANNED DEVELOPMENT  
 IN THE CITY OF FRESNO, FRESNO COUNTY, CALIFORNIA  
 SURVEYED AND PLATTED IN MARCH, 2007  
 BY HARBOUR & ASSOCIATES  
 CONSISTING OF 2 SHEETS  
 SHEET 2 OF 2

**LEGEND:**

- FOUND AND ACCEPTED MONUMENT AS DESCRIBED HEREON, UNLESS OTHERWISE NOTED.
- ⊙ SET 3/4" X 30" IRON PIPE, UP 4" IN 6" DIAMETER X 30" PCC MONUMENT, DOWN 6", TAGGED LS 5277.
- ⊙ FOUND MONUMENT AS DESCRIBED HEREON AND RESET WITH 3/4" X 30" IRON PIPE, UP 4" IN 6" DIAMETER X 30" PCC MONUMENT, DOWN 6", TAGGED LS 5277.
- ( ) INDICATES RECORD DATA AS SHOWN ON THE MAP OF TRACT NO. 4209 WILLOWWOOD ESTATES NO. 2 RECORDED IN VOLUME 53 OF PLATS AT PAGES 1 AND 2, FRESNO COUNTY RECORDS.
- { } INDICATES RECORD DATA AS SHOWN ON THE MAP OF TRACT NO. 3835 RECORDED IN VOLUME 46 OF PLATS AT PAGES 42 AND 43, FRESNO COUNTY RECORDS.
- < > INDICATES RECORD DATA AS SHOWN ON THE MAP OF TRACT NO. 2376 ROUGHRIDER HOMES NO. 3 RECORDED IN VOLUME 26 OF PLATS AT PAGE 93, FRESNO COUNTY RECORDS.
- [ ] INDICATES RECORD DATA AS SHOWN ON THE MAP OF EASTERBY HEIGHTS RECORDED APRIL 15, 1912 IN BOOK 7 OF RECORD OF SURVEYS AT PAGE 44, FRESNO COUNTY RECORDS.
- (( )) INDICATES RECORD DATA AS SHOWN ON PARCEL MAP NO. 77-17 RECORDED APRIL 21, 1978 IN BOOK 27 OF PARCEL MAPS AT PAGE 80, FRESNO COUNTY RECORDS.
- ① EASEMENT FOR RIGHT OF WAY FOR IRRIGATION DITCH RECORDED DECEMBER 7, 1971, AS INSTRUMENT NO. 98036, BOOK 5985, PAGE 367 OF OFFICIAL RECORDS.
- △ PREVIOUSLY DEDICATED FOR PUBLIC STREET PURPOSES AS INDICATED HEREON.
- ▲ NOW OFFERED FOR DEDICATION FOR PUBLIC STREET PURPOSES.
- BLUE BORDER INDICATES THE LIMITS OF THIS SUBDIVISION.

**NOTE:**

SET 3/4" X 30" IRON PIPE, DOWN 0.5', TAGGED LS 5277, OR WILL BE SET WITHIN ONE YEAR OR ANY APPROVED EXTENSION THEREOF, FOR ALL LOT CORNERS, BLOCK CORNERS, AND THE BEGINNING AND ENDING OF ALL CURVES.

**LINE DATA:**

LINE NUMBER	BEARING	DISTANCE
L 1	N 86°16'07" E	23.09'
L 2	N 89°59'36" E	20.31'
L 3	S 86°16'07" E	23.01'
L 4	N 89°59'36" E	20.43'

SCALE: 1" = 50'

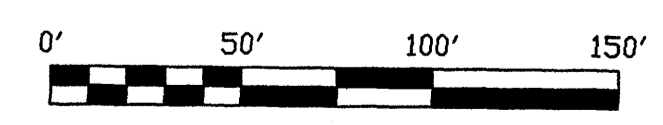
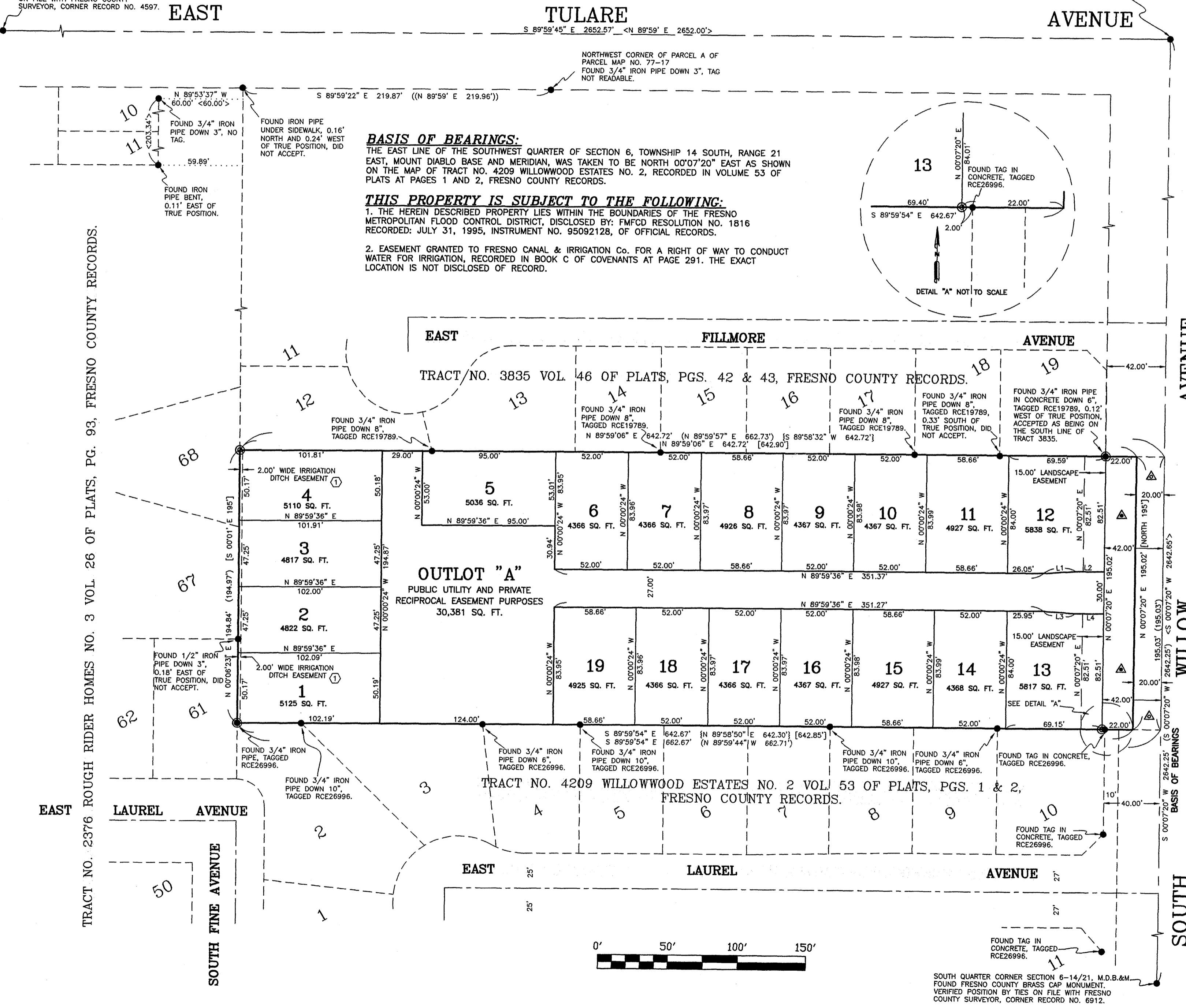
**RECORDER'S CERTIFICATE:**

DOCUMENT NO. \_\_\_\_\_ FEE: \$ \_\_\_\_\_  
 FILED THIS \_\_\_\_\_ DAY OF \_\_\_\_\_, 2007, AT \_\_\_\_\_  
 IN BOOK \_\_\_\_\_ OF PARCEL MAPS, AT PAGE(S) \_\_\_\_\_, AT THE  
 REQUEST OF HARBOUR AND ASSOCIATES.  
 FRESNO COUNTY RECORDS  
 ROBERT C. WERNER, COUNTY RECORDER  
 BY: \_\_\_\_\_ DEPUTY \_\_\_\_\_ DATE \_\_\_\_\_

**Harbour & Associates**  
 Civil Engineers  
 389 CLOVIS AVENUE # 300 • Clovis, California 93612  
 (559) 325 - 7676 • Fax (559) 325 - 7699 • e-mail • ha\_ce@msn.com

WEST QUARTER CORNER SECTION 6-14/21, M.D.B.&M. FOUND FRESNO COUNTY BRASS CAP MONUMENT IN HAND WELL. VERIFIED POSITION BY TIES ON FILE WITH FRESNO COUNTY SURVEYOR, CORNER RECORD NO. 4597.

CENTER QUARTER CORNER SECTION 6-14/21 M.D.B.&M. POSITION FALLS ON MANHOLE ESTABLISHED POSITION BY TIES ON FILE WITH FRESNO COUNTY SURVEYOR, CORNER RECORD NO. 4659.



TRACT NO. 2376 ROUGHRIDER HOMES NO. 3 VOL. 26 OF PLATS, PG. 93, FRESNO COUNTY RECORDS.

WILLOW

WILLOW

SOUTH