



Street Names, Addresses and (Lot Numbers) for T5567

Prepared on Mon Oct 22 14:11:37 2018

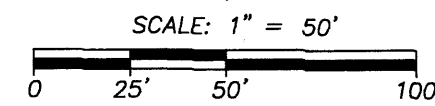


FINAL MAP OF TRACT NO. 5567

OF VESTING TENTATIVE MAP NO. 5567
BEING A SUBDIVISION OF OUTLOTS A, B & C
OF THE MAP OF TRACT NO. 5770
VOLUME OF PLATS AT PAGES - , FRESNO COUNTY RECORDS
AND A PORTION OF THE SOUTHWEST 1/4 OF THE NORTHEAST 1/4 OF SECTION 27,
TOWNSHIP 13 SOUTH, RANGE 19 EAST, MOUNT DIABLO BASE & MERIDIAN
IN THE CITY OF FRESNO, FRESNO COUNTY, CALIFORNIA
SURVEYED AND PLATTED IN FEBRUARY 2013,
BY YAMABE & HORN ENGINEERING, INC.
CONSISTING OF 2 SHEETS
SHEET 2 OF 2

LEGEND

- FOUND & ACCEPTED 3/4" IRON PIPE DOWN 6" TAGGED RCE 26996 UNLESS OTHERWISE NOTED
- ⊙ SET 3/4" BY 30" LONG IRON PIPE DOWN 6" IN 12" DIAMETER CONCRETE COLLAR TAGGED LS 7923
- FOUND AND ACCEPTED 3/4" IRON PIPE DOWN 6" TAGGED LS 7923 UNLESS OTHERWISE NOTED.
- R1 () RECORD DATA PER FINAL MAP OF TRACT NO. 5770 RECORDED IN VOLUME ___ OF PLATS AT PAGES ___ THROUGH ___, F.C.R.
- R2 () RECORD DATA PER FINAL MAP OF TRACT NO. 5300 RECORDED IN VOLUME 76 OF PLATS AT PAGES 84 AND 85, F.C.R.
- R3 () RECORD DATA PER RECORD OF SURVEY RECORDED IN BOOK 24 OF RECORD OF SURVEYS AT PAGE 19, F.C.R.
- △ PREVIOUSLY OFFERED FOR DEDICATION FOR PUBLIC STREET PURPOSES PER THE FINAL MAP OF TRACT NO. 5300, R2()
- ▲ PREVIOUSLY OFFERED FOR DEDICATION FOR PUBLIC STREET PURPOSES PER THE FINAL MAP OF TRACT NO. 5770, R1()
- R1(PE) PEDESTRIAN EASEMENT PREVIOUSLY DEDICATED PER R1 ()
- R1(PUE) PUBLIC UTILITY EASEMENT PREVIOUSLY DEDICATED PER R1 ()
- R1(PPUE) PLANTING & PUBLIC UTILITY EASEMENT PREVIOUSLY DEDICATED PER R1 ()
- R1(LE) LANDSCAPE EASEMENT PREVIOUSLY DEDICATED PER R1 ()
- CR CORNER RECORD ON FILE WITH THE FRESNO COUNTY SURVEYOR
- O.R.F.C. OFFICIAL RECORDS FRESNO COUNTY
- F.C.R. FRESNO COUNTY RECORDS
- CFR CALCULATED FROM RECORD DATA
- M.D.B. & M. MOUNT DIABLO BASE AND MERIDIAN
- SE STORMDRAIN EASEMENT PREVIOUSLY GRANTED TO THE FRESNO METROPOLITAN FLOOD CONTROL DISTRICT PER DEED OF EASEMENT RECORDED AS DOC. NO. 2013- , O.R.F.C.
- SECTION LINE
- EXISTING PROPERTY LINE
- EASEMENT LINE
- INDICATES EXTENSION OF LINE TO DIMENSION POINT AS SHOWN
- BLUE BORDER INDICATES LIMITS OF SUBDIVISION
- ▲▲▲▲▲ INDICATES RELINQUISHMENT OF DIRECT ACCESS RIGHTS



THE REAL PROPERTY DESCRIBED BELOW IS DEDICATED AS AN EASEMENT FOR PUBLIC USE.

- ▲ PUBLIC STREET EASEMENT NOW OFFERED FOR DEDICATION FOR PUBLIC USE
- PUE PUBLIC UTILITY EASEMENT NOW OFFERED FOR DEDICATION FOR PUBLIC USE
- PPUE PLANTING AND PUBLIC UTILITY EASEMENT NOW OFFERED FOR DEDICATION FOR PUBLIC USE
- LE LANDSCAPE EASEMENT NOW OFFERED FOR DEDICATION FOR PUBLIC USE
- PE PEDESTRIAN EASEMENT NOW OFFERED FOR DEDICATION FOR PUBLIC USE

LINE TABLE					
LINE	MEASURED			RECORD	
	DIRECTION	DISTANCE	DIRECTION	DISTANCE	
L1	N89°56'46"E	55.00'	R1(N89°56'46"E)	R1(55.00')	
L2	S45°03'14"E	21.21'	R1(S45°03'14"E)	R1(21.21')	
L3	N44°56'46"E	17.68'	R1(N44°56'46"E)	R1(17.68')	
L4	N89°56'46"E	25.00'	R1(N89°56'46"E)	R1(25.00')	
L5	N0°07'26"E	25.00'			
L6	N0°07'26"W	25.00'			
L7	N0°07'26"W	25.00'			
L8	N44°54'40"E	17.46'	R1(N44°54'40"E)	R1(17.46')	
L9	S45°05'20"E	17.45'	R1(S45°05'20"E)	R1(17.45')	
L10	S0°03'14"E	46.50'	R1(N0°03'14"W)	R1(46.50')	
L11	N89°52'34"E	6.00'	R1(N89°52'34"E)	R1(6.00'CFR)	

CURVE TABLE						
CURVE	MEASURED			RECORD		
	RADIUS	DELTA	LENGTH	RADIUS	DELTA	LENGTH
C1	45.00'	30°19'37"	23.82'	R1(45.00')	R1(30°19'37")	R1(23.82')
C2	45.00'	4°00'28"	3.15'	R1(45.00')		
C3	45.00'	26°19'09"	20.67'	R1(45.00')		
C4	50.00'	82°00'39"	71.57'			
C5	50.00'	35°50'35"	31.28'	R1(50.00')		
C6	50.00'	51°33'58"	45.00'	R1(50.00')		
C7	50.00'	56°15'44"	49.10'	R1(50.00')		
C8	50.00'	6°54'45"	6.03'	R1(50.00')		
C9	45.00'	30°19'37"	23.82'	R1(45.00')	R1(30°19'37")	R1(23.82')
C10	50.00'	68°34'23"	59.84'	R1(50.00')	R1(68°34'23")	R1(59.84')

RADIAL TABLE	
LINE	DIRECTION
R1	N85°56'18"E
R2	N84°32'16"W
R3	N32°58'18"W
R4	N23°17'26"E
R5	N38°22'12"W

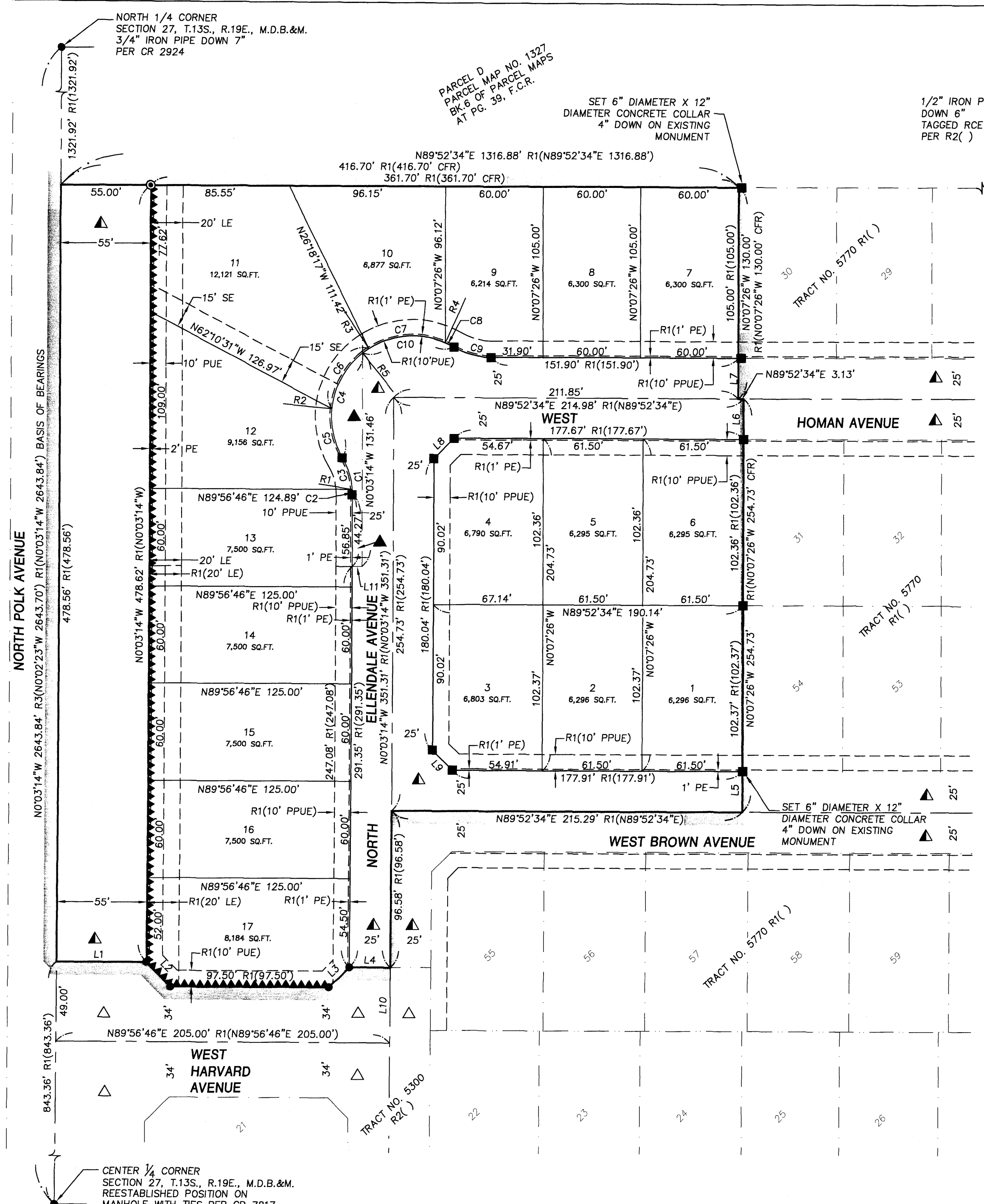
BASIS OF BEARINGS:

THE WEST LINE OF THE NORTHEAST QUARTER OF SECTION 27, TOWNSHIP 13 SOUTH, RANGE 19 EAST, MOUNT DIABLO BASE AND MERIDIAN, AS SHOWN ON THE FINAL MAP OF TRACT NO. 5770, RECORDED IN VOLUME ___ OF PLATS AT PAGES ___ THROUGH ___, FRESNO COUNTY RECORDS. TAKEN TO BE NORTH 0°03'14" WEST.

YAMABE & HORN ENGINEERING, INC.

2985 N. BURL AVE.
SUITE 101
FRESNO, CA 93727

TEL (559) 244-3123
FAX (559) 244-3120



NOTE

SET 3/4"x30" IRON PIPE DOWN 6" TAGGED LS 7923 AT ALL LOT CORNERS, ANGLE POINTS & POINTS OF CURVATURE UNLESS OTHERWISE NOTED.

NORTH 1/4 CORNER
SECTION 27, T.13S., R.19E., M.D.B.&M.
3/4" IRON PIPE DOWN 7"
PER CR 2924

PARCEL D
PARCEL MAP NO. 1327
BK. 6 OF PARCEL MAPS
AT PG. 38, F.C.R.

SET 6" DIAMETER X 12"
DIAMETER CONCRETE COLLAR
4" DOWN ON EXISTING
MONUMENT

1/2" IRON PIPE
DOWN 6"
TAGGED RCE 30501
PER R2()

CENTER 1/4 CORNER
SECTION 27, T.13S., R.19E., M.D.B.&M.
REESTABLISHED POSITION ON
MANHOLE WITH TIES PER CR 7817