



Street Names, Addresses and (Lot Numbers) for T5558

Prepared on Wed Oct 17 22:37:23 2018



FINAL MAP OF
TRACT NO. 5558

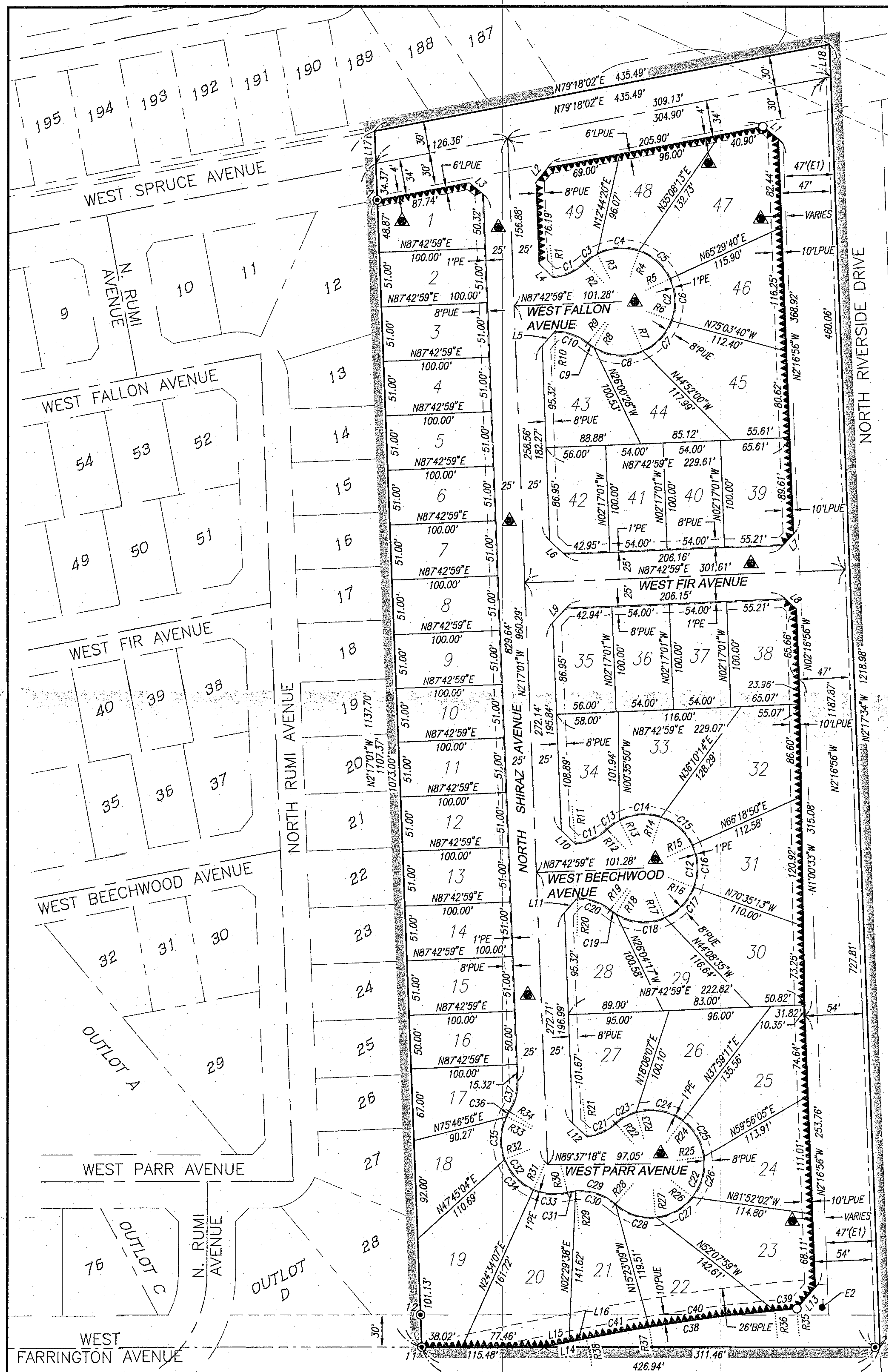
A PLANNED DEVELOPMENT, BEING A MERGER AND RESUBDIVISION OF LOTS 213 AND 220 OF J.C.FORKNER FIG GARDENS SUBDIVISION NO. 3, BOOK 8, PAGE 79, OF PLATS, FRESNO COUNTY RECORDS, IN THE CITY OF FRESNO, COUNTY OF FRESNO, STATE OF CALIFORNIA

SURVEYED AND PLATTED IN JULY 2017
BY PRECISION CIVIL ENGINEERING, INC.

CONSISTING OF THREE SHEETS
SHEET THREE OF THREE

NOTE:

1. SET 3/4" X 30" IRON PIPE, TAGGED LS 5096, DOWN 6", AT ALL LOT CORNERS, ANGLE POINTS, AND ENDS OF CURVES, UNLESS NOTED OTHERWISE.
2. DISTANCES NOT MONUMENTED ARE CALCULATED.
3. THOSE PORTIONS OF WEST FARRINGTON AVENUE (SHOWN AS HERNDON AVENUE ON J.C.F.F.G.S.N.3, WHICH ARE NOT DELINEATED ON THIS MAP ARE DEEMED ABANDONED PURSUANT TO SECTIONS 66434(G) OF THE SUBDIVISION MAP ACT.



LINE TABLE

LINE	BEARING	LENGTH
L1	N51°31'21"W	18.86'
L2	N38°30'31"E	17.82'
L3	N51°29'29"W	17.44'
L4	N46°29'33"W	18.38'
L5	N41°55'31"E	18.38'
L6	N47°17'01"W	18.46'
L7	N42°43'02"E	14.70'
L8	N47°16'58"W	14.70'
L9	N42°42'59"E	18.46'
L10	N46°29'33"W	18.38'
L11	N41°55'31"E	18.38'
L12	N47°17'01"W	18.24'
L13	N41°24'02"E	26.43'
L14	N78°47'48"E	40.29'
L15	N78°47'48"E	23.46'
L16	N78°47'48"E	16.83'
L17	N217°01"W	30.33'
L18	N217°34"W	30.33'

RADIAL TABLE

RADIAL	BEARING
R1	S5°21'42"E
R2	N4°34'13"W
R3	N27°28'02"W
R4	N18°44'30"E
R5	N64°47'20"E
R6	S69°07'30"E
R7	S23°14'46"E
R8	S31°33'29"W
R9	S39°07'34"W
R10	N0°47'40"E
R11	S5°21'42"E
R12	N4°34'13"W
R13	N27°28'02"W
R14	N18°44'30"E
R15	N64°47'20"E
R16	S69°07'30"E
R17	S23°14'46"E
R18	S31°33'29"W
R19	S39°07'34"W

RADIAL TABLE

RADIAL	BEARING
R20	N0°47'40"E
R21	S6°45'48"E
R22	N41°20'21"W
R23	N16°04'53"W
R24	N36°34'39"E
R25	N82°47'26"E
R26	S51°10'53"E
R27	S5°08'07"E
R28	N41°28'48"E
R29	N5°07'16"W
R30	S14°08'13"E
R31	S22°52'11"W
R32	S69°20'46"W
R33	N63°50'54"W
R34	N57°39'40"W
R35	N4°48'17"W
R36	N5°28'17"W
R37	N9°17'22"W
R38	N11°12'12"W

CURVE TABLE

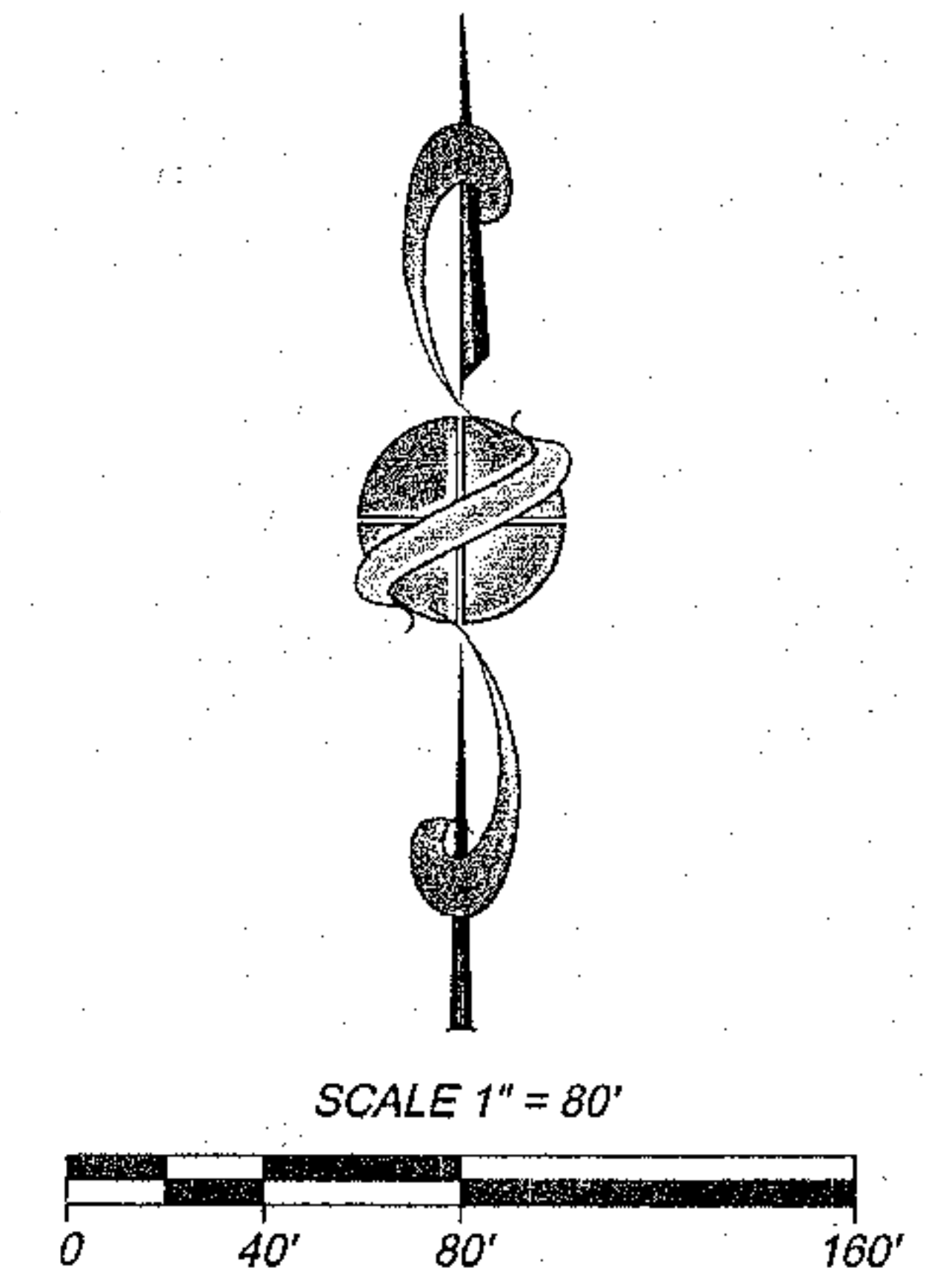
CURVE	RADIUS	DELTA	LENGTH
C1	50.00'	38°19'54"	33.45'
C2	50.00'	262°49'10"	229.35'
C3	50.00'	16°13'34"	14.16'
C4	50.00'	46°12'32"	40.32'
C5	50.00'	46°02'50"	40.18'
C6	50.00'	46°05'10"	40.22'
C7	50.00'	45°52'44"	40.04'
C8	50.00'	54°48'15"	47.83'
C9	50.00'	7°34'05"	6.60'
C10	50.00'	38°19'54"	33.45'
C11	50.00'	38°19'54"	33.45'
C12	50.00'	262°49'10"	229.35'
C13	50.00'	16°13'34"	14.16'
C14	50.00'	46°12'32"	40.32'
C15	50.00'	46°02'50"	40.18'
C16	50.00'	46°05'10"	40.22'
C17	50.00'	45°52'44"	40.04'
C18	50.00'	54°48'15"	47.83'
C19	50.00'	7°34'05"	6.60'
C20	50.00'	38°19'54"	33.45'
C21	50.00'	34°34'33"	30.17'

CURVE TABLE

CURVE	RADIUS	DELTA	LENGTH
C22	50.00'	262°49'09"	229.35'
C23	50.00'	25°15'28"	22.04'
C24	50.00'	52°39'32"	45.95'
C25	50.00'	46°12'47"	40.33'
C26	50.00'	46°01'41"	40.17'
C27	50.00'	46°02'46"	40.18'
C28	50.00'	46°36'55"	40.68'
C29	50.00'	55°37'01"	48.54'
C30	50.00'	46°36'04"	40.67'
C31	50.00'	9°00'57"	7.87'
C32	50.00'	136°28'33"	119.10'
C33	50.00'	37°00'24"	32.29'
C34	50.00'	46°28'35"	40.56'
C35	50.00'	46°48'20"	40.85'
C36	50.00'	6°11'14"	5.40'
C37	50.00'	34°37'21"	30.21'
C38	1793.00'	6°23'55"	200.24'
C39	1793.00'	0°40'00"	20.87'
C40	1793.00'	3°49'05"	119.48'
C41	1793.00'	1°54'50"	59.89'

LEGEND

- ⊕ MONUMENTS FOUND AND ACCEPTED AS NOTED (SEE MONUMENT TABLE ON SHEET TWO)
- SET 3/4" IRON PIPE, 30" LONG, 4" UP IN 6" DIAMETER X 30" P.C.C. MONUMENT, DOWN 6", TAGGED LS 5096 (DURABLE MONUMENT)
- ▲ INDICATES EASEMENT NOW OFFERED FOR DEDICATION FOR PUBLIC STREET PURPOSES
- E1 EXISTING EASEMENT GRANTED TO CITY OF FRESNO FOR PUBLIC STREET PURPOSES, RECORDED OCTOBER 9, 2007, AS DOCUMENT NO. 2007-0187214, O.R.F.C.
- E2 EXISTING EASEMENT GRANTED TO CITY OF FRESNO FOR PUBLIC STREET PURPOSES, RECORDED APRIL 10, 2014, AS DOCUMENT NO. 2014-0040313, O.R.F.C.
- PE PEDESTRIAN EASEMENT NOW OFFERED FOR DEDICATION FOR PUBLIC USE
- PUE PUBLIC UTILITY EASEMENT NOW OFFERED FOR DEDICATION FOR PUBLIC USE
- PPUE PEDESTRIAN AND PUBLIC UTILITY EASEMENT NOW OFFERED FOR DEDICATION FOR PUBLIC USE
- LPUE LANDSCAPE AND PUBLIC UTILITY EASEMENT NOW OFFERED FOR DEDICATION FOR PUBLIC USE
- BPUE BIKE, PEDESTRIAN, AND LANDSCAPE EASEMENT NOW OFFERED FOR DEDICATION FOR PUBLIC USE
- C1 SEE CURVE TABLE
- L1 SEE LINE TABLE
- R1 SEE RADIAL TABLE
- O.R.F.C. OFFICIAL RECORDS OF FRESNO COUNTY
- ▲▲▲▲▲ INDICATES RELINQUISHMENT OF DIRECT ACCESS RIGHTS
- ▬▬▬▬▬▬▬ INDICATES LIMITS OF THIS SUBDIVISION



PREPARED BY:
PRECISION CIVIL ENGINEERING, INC.
1234 O STREET
FRESNO, CA 93721
PH(559)449-4500 FAX(559)449-4515