



Prepared on Wed Nov 07 22:18:53 2018

Street Names, Addresses and (Lot Numbers) for T5556



FINAL MAP OF

TRACT NO. 5556

PHASE 2 OF TENTATIVE MAP NO. 4959
 BEING A SUBDIVISION OF THE REMAINDER PARCEL OF TRACT 4959
 A PLANNED UNIT DEVELOPMENT
 IN THE CITY OF FRESNO
 COUNTY OF FRESNO, STATE OF CALIFORNIA
 SURVEYED AND PLATTED IN JANUARY 2006 BY DOUGLAS "JOHN" JOHNSON
 CONSISTING OF THREE SHEETS, SHEET TWO OF THREE

LEGEND

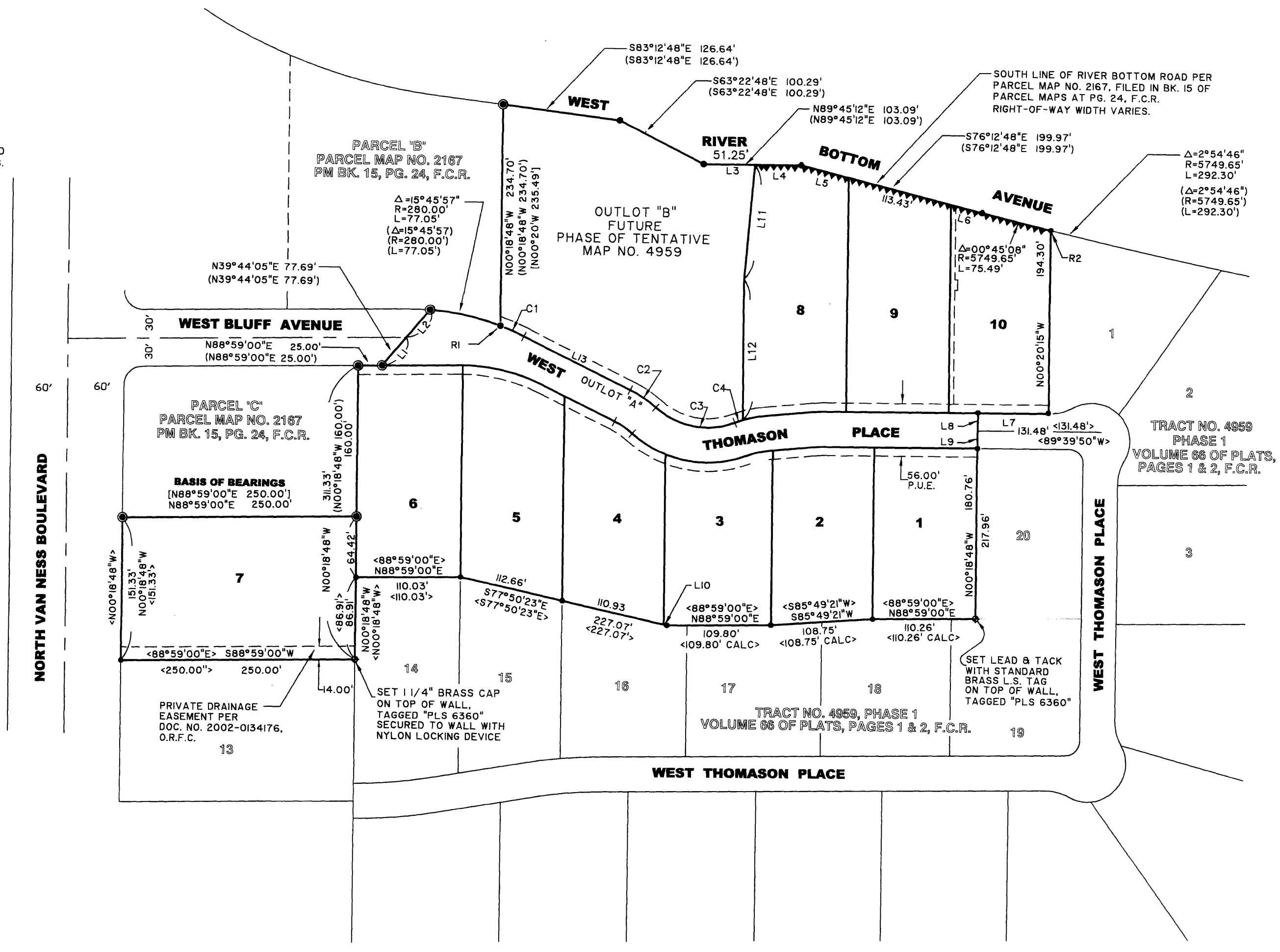
- ◆ SET 3/4" BY 30" LONG I.P. DOWN 6" TAGGED PLS 6360 UNLESS OTHERWISE NOTED
- FOUND AND ACCEPTED 3/4" I.P. DOWN 6" TAGGED PLS 6360 UNLESS OTHERWISE NOTED
- ⊙ FOUND AND ACCEPTED 3/4" I.P. DOWN 6" IN CONCRETE, TAGGED PLS 6360
- <> DATA PER MAP OF TRACT NO. 4959, FILED IN BK. 66 OF PLATS AT PGS. 1 & 2, F.C.R.
- () DATA PER RECORD OF SURVEY FILED IN BK. 45 OF RECORD OF SURVEYS AT PGS. 88 & 89, F.C.R.
- [] DATA PER PARCEL MAP NO. 2167, FILED IN BK. 15 OF PARCEL MAPS AT PG. 24, F.C.R.

O.R.F.C. OFFICIAL RECORDS FRESNO COUNTY
 F.C.R. FRESNO COUNTY RECORDS
 I.P. IRON PIPE

--- P.U.E.

▲▲▲ INDICATES RELINQUISHMENT OF DIRECT ACCESS RIGHTS
 BLUE BORDER INDICATES LIMIT OF SUBDIVISION

OUTLOT "A" DESIGNATED FOR PUBLIC UTILITY EASEMENT, DRAINAGE, PARKING AND LANDSCAPING, COMMON AREA, STORM DRAINAGE AND PRIVATE STREET PURPOSES.



CURVE DATA TABLE

CURVE	DELTA ANGLE	RADIUS	ARC LENGTH
C1	05°38'30"	280.00'	27.57'
C2	15°54'16"	118.60'	32.92'
C3	62°57'39"	81.40'	89.45'
C4	04°14'01"	118.60'	8.76'

LINE TABLE

LINE	BEARING	DISTANCE
L1	N 39°44'05" E	39.60'
L2	N 39°44'05" E	36.09'
L3	S 89°45'12" W	54.25'
L4	S 89°45'12" W	48.84'
L5	N 76°12'48" W	52.66'
L6	N 76°12'48" W	33.88'
L7	N 89°39'50" E	75.26'
L8	S 00°18'48" E	18.60'
L9	S 00°18'48" E	18.60'
L10	S 77°50'23" E	3.48'
L11	S 04°24'37" W	121.95'
L12	S 00°20'15" E	149.20'
L13	S 64°25'11" E	127.63'

RADIAL BEARING TABLE

NO.	BEARING
R1	N 19°56'19" E
R2	S 13°02'04" W



SCALE: 1 INCH = 100 FEET



SURVEYOR'S NOTES

MONUMENTS SHALL BE 3/4" BY 30" LONG IRON PIPE, DOWN 6", TAGGED "PLS 6360" AND SET AT ALL PROPERTY CORNERS, BEGINNING OF CURVES, END OF CURVES AND POINTS OF REVERSE CURVATURE ALONG PROPERTY LINES.

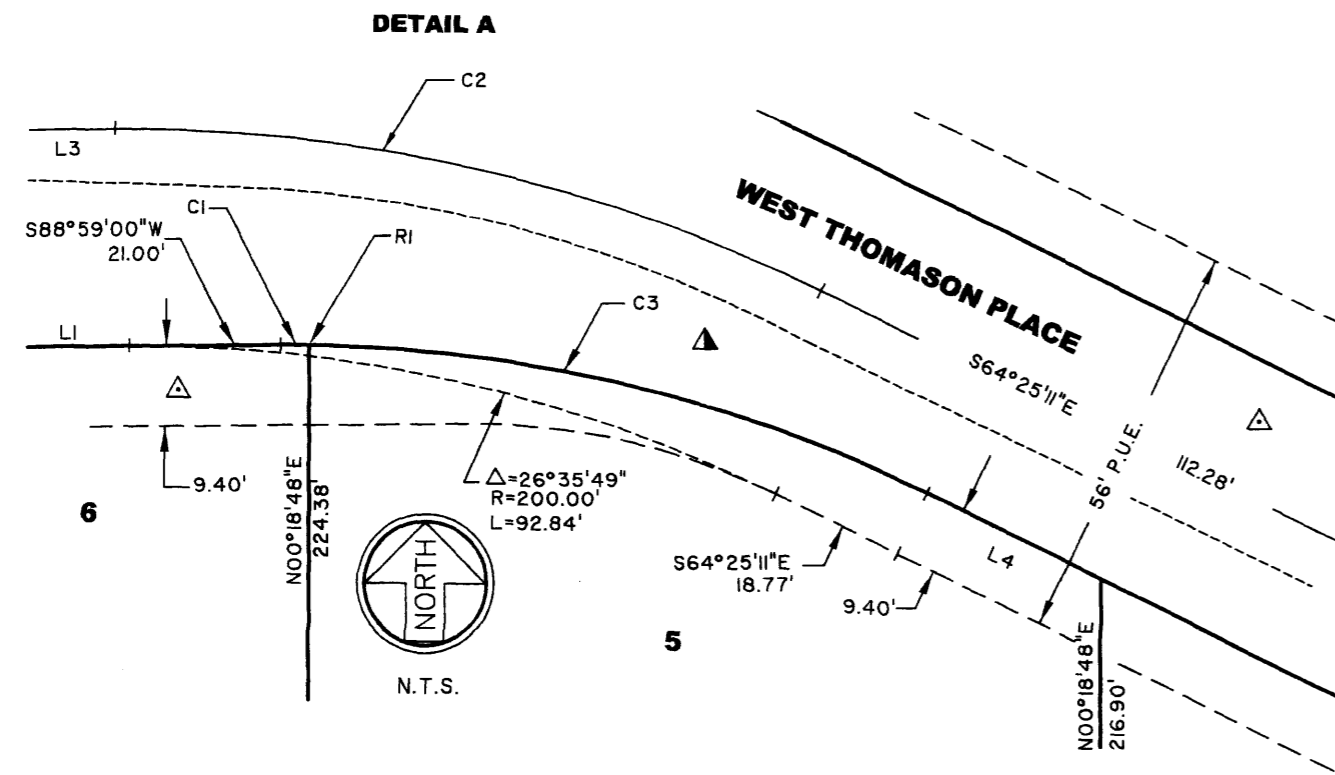
THE EXTERIOR BOUNDARY OF THIS SUBDIVISION WAS ESTABLISHED UNDER MY DIRECTION AND MONUMENTED AS SHOWN ON RECORD OF SURVEY FILED IN BOOK 45 AT PAGES 88 & 89 FRESNO COUNTY RECORDS.

BASIS OF BEARINGS

THE SOUTH LINE OF PARCEL "C", BETWEEN FOUND 3/4" I.P. MONUMENTS, OF PARCEL MAP 2167 RECORDED IN BOOK 15 OF PARCEL MAPS AT PAGE 24, FRESNO COUNTY RECORDS AND SHOWN ON RECORD OF SURVEY FILED IN BOOK 45 OF RECORD OF SURVEYS, AT PAGES 88 AND 89, FRESNO COUNTY RECORDS, TAKEN TO BE NORTH 88°59'00" EAST.

FINAL MAP OF TRACT NO. 5556

PHASE 2 OF TENTATIVE MAP NO. 4959
BEING A SUBDIVISION OF THE REMAINDER PARCEL OF TRACT 4959
A PLANNED UNIT DEVELOPMENT
IN THE CITY OF FRESNO
COUNTY OF FRESNO, STATE OF CALIFORNIA
SURVEYED AND PLATTED IN JANUARY 2006 BY DOUGLAS "JOHN" JOHNSON
CONSISTING OF THREE SHEETS, SHEET THREE OF THREE



BASIS OF BEARINGS

THE SOUTH LINE OF PARCEL "C", BETWEEN FOUND 3/4" I.P. MONUMENTS, OF PARCEL MAP 2167 RECORDED IN BOOK 15 OF PARCEL MAPS AT PAGE 24, FRESNO COUNTY RECORDS AND SHOWN ON RECORD OF SURVEY FILED IN BOOK 45 OF RECORD OF SURVEYS, AT PAGES 88 AND 89, FRESNO COUNTY RECORDS, TAKEN TO BE NORTH 88°59'00" EAST.

CURVE DATA TABLE

CURVE	DELTA ANGLE	RADIUS	ARC LENGTH
C1	01°08'36"	200.00'	3.99'
C2	26°35'49"	218.60'	101.48'
C3	25°27'13"	200.00'	88.85'
C4	05°38'30"	280.00'	27.57'
C5	15°54'16"	118.60'	32.92'
C6	15°54'16"	100.00'	27.76'
C7	15°54'16"	81.40'	22.60'
C8	20°21'22"	118.60'	42.14'
C9	42°36'17"	118.60'	88.19'
C10	62°57'39"	100.00'	109.89'
C11	62°57'39"	81.40'	89.45'
C12	04°14'01"	118.60'	8.76'
C13	11°42'32"	118.60'	24.24'
C14	15°56'32"	100.00'	27.82'
C15	15°56'32"	81.40'	22.65'
C16	05°11'52"	81.40'	7.38'
C17	05°11'52"	100.00'	9.07'
C18	05°11'52"	118.60'	10.76'

LINE TABLE

LINE	BEARING	DISTANCE
L1	N 88°59'00" E	106.04'
L2	N 88°59'00" E	81.04'
L3	N 88°59'00" E	32.42'
L4	S 64°25'11" E	26.89'
L5	S 64°25'11" E	59.93'
L6	S 64°25'11" E	112.28'
L7	S 64°25'11" E	127.63'
L8	N 84°27'58" E	49.70'
L9	N 84°27'58" E	49.70'
L10	N 84°27'58" E	5.06'
L11	N 84°27'58" E	44.64'
L12	N 89°39'50" E	56.67'
L13	N 89°39'50" E	26.01'
L14	N 89°39'50" E	30.92'

RADIAL BEARING TABLE

NO.	BEARING
R1	S 00°07'36" W
R2	N 19°56'19" E
R3	S 21°07'43" W
R4	N 17°14'33" W
R5	S 13°02'04" W
R6	N 04°10'22" E

LEGEND

- SET 3/4" BY 30" LONG I.P. DOWN 6", TAGGED PLS 6360, UNLESS OTHERWISE NOTED
- FOUND AND ACCEPTED 3/4" I.P. DOWN 6" TAGGED PLS 6360 UNLESS OTHERWISE NOTED
- FOUND AND ACCEPTED 3/4" I.P. DOWN 6" IN CONCRETE, TAGGED PLS 6360
- [] DATA PER PARCEL MAP NO. 2167, FILED IN BK. 15 OF PARCEL MAPS AT PG. 24, F.C.R.
- <> DATA PER MAP OF TRACT NO. 4959, FILED IN BK. 66 OF PLATS AT PGS. 1 & 2, F.C.R.
- () DATA PER RECORD OF SURVEY FILED IN BK. 45 OF RECORD OF SURVEYS AT PGS. 88 & 89, F.C.R.
- △ PUBLIC UTILITY EASEMENT NOW OFFERED FOR DEDICATION
- ▲ INDICATED PREVIOUSLY DEEDED TO THE CITY OF FRESNO PER DEED OF EASEMENT FOR PUBLIC UTILITY PURPOSES, RECORDED APRIL 23, 2002, AS DOCUMENT NO. 2002-0066674, F.C.R.
- P.U.E. PREVIOUSLY DEEDED TO THE CITY OF FRESNO
- F.C.R. FRESNO COUNTY RECORDS
- O.R.F.C. OFFICIAL RECORDS FRESNO COUNTY
- I.P. IRON PIPE
- ▲▲▲▲ INDICATES RELINQUISHMENT OF DIRECT ACCESS RIGHTS
- BLUE BORDER INDICATES LIMIT OF SUBDIVISION. OUTLOT A DESIGNATED FOR PRIVATE STREET PURPOSES
- P.U.E.

SURVEYOR'S NOTES

MONUMENTS SHALL BE 3/4" BY 30" LONG IRON PIPE, DOWN 6", TAGGED "PLS 6360" AND SET AT ALL PROPERTY CORNERS, BEGINNING OF CURVES, END OF CURVES AND POINTS OF REVERSE CURVATURE ALONG PROPERTY LINES.

THE EXTERIOR BOUNDARY OF THIS SUBDIVISION WAS ESTABLISHED UNDER MY DIRECTION AND MONUMENTED AS SHOWN ON RECORD OF SURVEY FILED IN BOOK 45 AT PAGES 88 & 89 FRESNO COUNTY RECORDS.

