



Prepared on Mon Oct 22 14:13:23 2018

Street Names, Addresses and (Lot Numbers) for T5555



TRACT NO. 5555

IN THE CITY OF FRESNO, COUNTY OF FRESNO, STATE OF CALIFORNIA
 SURVEYED AND PLATTED IN OCTOBER 2005, BY GARY G. GIANNETA
 BEING A MERGER AND RESUBDIVISION OF A PORTION OF FIG GARDEN SUBDIVISION NO. 4
SHEET TWO OF TWO SHEETS

NOTE:

- SET 3/4" IRON PIPE, 6" DOWN, TAGGED RCE 26996 AT ALL LOT CORNERS
- THAT CERTAIN EASEMENT FOR SANITARY SEWER LIFT STATION, SANITARY SEWER LINE, AND MANHOLE PURPOSES AS GRANTED TO THE CITY OF FRESNO BY THAT DEED OF EASEMENT RECORDED AUGUST 23, 1991 AS DOCUMENT NO. 91103382, OFFICIAL RECORDS OF FRESNO COUNTY, WHICH IS NOT DELINEATED ON THIS MAP IS DEEMED ABANDONED, PURSUANT TO SECTION 66499.20 1/2 OF THE SUBDIVISION MAP ACT

BASIS OF BEARINGS

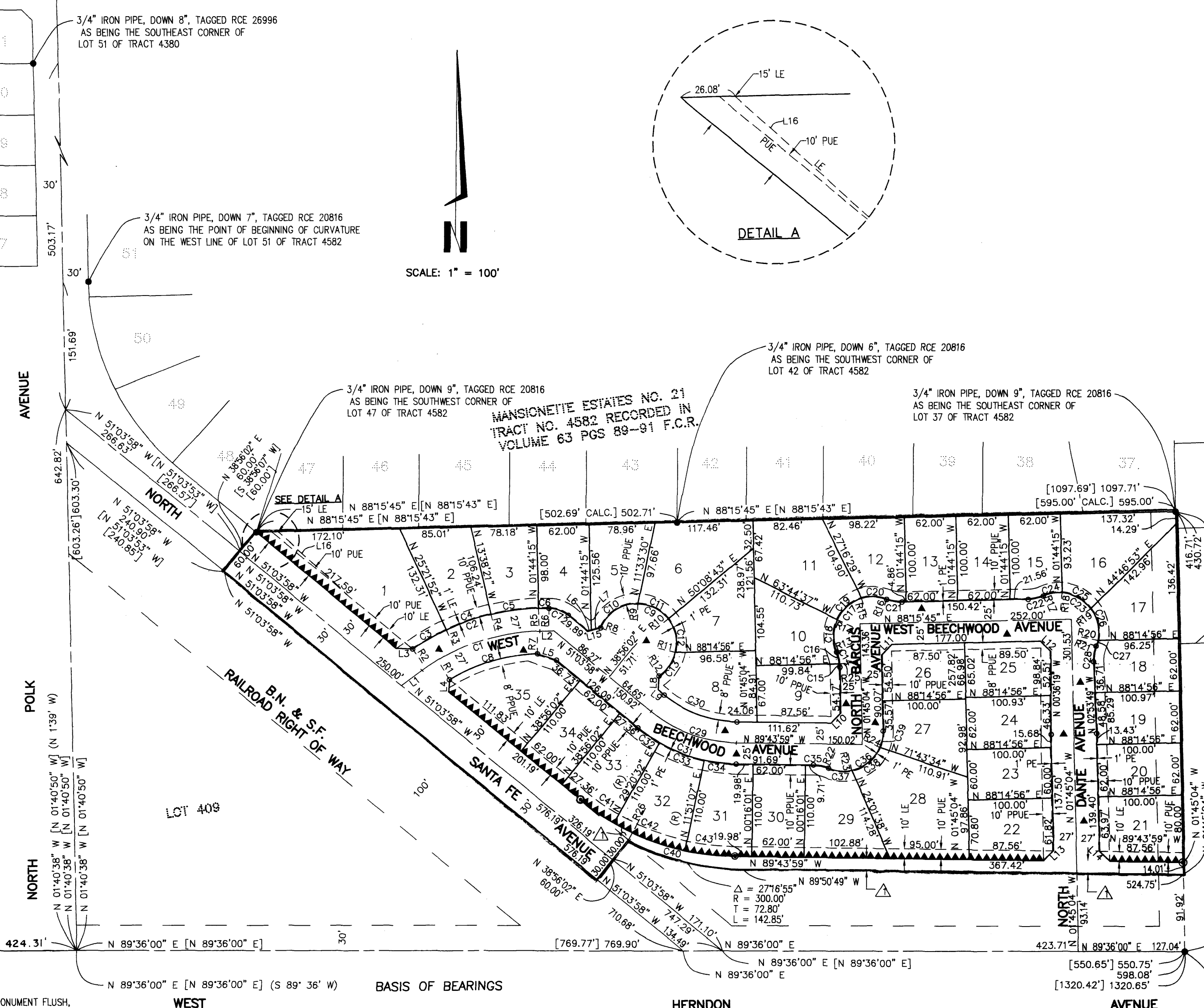
THE SOUTH LINE OF THE SOUTHWEST QUARTER OF SECTION 34, TOWNSHIP 12 SOUTH, RANGE 19 EAST, MOUNT DIABLO BASE AND MERIDIAN, TAKEN AS BEARING N 89°36'00" E AS PER TRACT NO. 4474, RECORDED IN VOLUME 50, PAGES 97-102 OF PLATS, FRESNO COUNTY RECORDS.

LEGEND:

- MONUMENT FOUND AND ACCEPTED AS NOTED
- SET 3/4" IRON PIPE, 30" LONG, 6" DOWN BELOW GROUND, TAGGED R.C.E. 26996
- ⊙ SET 3/4" IRON PIPE, 30" LONG, 4" UP IN 6" DIAMETER x 30" P.C.C. MONUMENT, DOWN 6" BELOW GROUND, TAGGED R.C.E. 26996
- ▲ NOW OFFERED FOR DEDICATION FOR PUBLIC STREET PURPOSES
- ▲▲▲▲ INDICATES RELINQUISHMENT OF DIRECT ACCESS RIGHTS
- () RECORD DATA AS PER J.C. FORKNER FIG GARDEN SUBD. NO. 4 RECORDED IN BOOK 9, PAGES 89-91, F.C.R.
- [] RECORD DATA AS PER MANSIONETTE ESTATES NO. 21- TRACT NO. 4582, RECORDED IN BOOK 63, PAGES 89-91, F.C.R.
- △ PREVIOUSLY DEEDED FOR PUBLIC STREET PURPOSES AUGUST 23, 1991 AS INSTRUMENT NO. 91-103383, F.C.R.
- PUE PUBLIC UTILITY EASEMENT NOW OFFERED FOR DEDICATION FOR PUBLIC USE
- PPUE PLANTING AND PUBLIC UTILITY EASEMENT NOW OFFERED FOR DEDICATION FOR PUBLIC USE
- LE LANDSCAPE EASEMENT NOW OFFERED FOR DEDICATION FOR PUBLIC USE
- F.C.R. FRESNO COUNTY RECORDS
- BLUE BORDER INDICATES THE LIMITS OF THIS SUBDIVISION

LINE	DIRECTION	DISTANCE
L1	N 53°56'02" E	30.39'
L2	N 88°15'45" E	16.47'
L3	N 88°25'14" W	19.87'
L4	N 03°15'25" E	14.58'
L5	N 71°26'50" W	23.43'
L6	N 74°42'54" E	4.55'
L7	N 74°42'54" E	11.90'
L8	N 03°09'11" E	16.45'
L9	N 51°03'58" W	9.98'
L10	N 44°15'29" E	17.36'
L11	N 43°15'20" E	17.68'
L12	N 46°41'25" W	17.66'
L13	N 44°15'29" E	17.36'
L14	N 45°44'31" W	17.99'
L15	N 74°42'54" E	16.45'
L16	N 48°32'16" W	113.34'

RADIAL	DIRECTION
R1	N 30°48'50" W
R2	S 34°50'20" E
R3	S 25°21'52" E
R4	S 13°38'21" E
R5	S 01°54'51" E
R6	S 00°38'05" W
R7	N 02°30'00" E
R8	S 67°35'02" E
R9	S 00°45'42" W
R10	S 51°57'44" W
R11	N 76°50'15" W
R12	N 34°32'53" W
R13	N 66°06'59" E
R14	S 65°43'59" E
R15	S 16°58'14" E
R16	S 20°23'41" W
R17	S 23°52'12" E
R18	S 03°56'29" W
R19	S 52°42'14" W
R20	N 78°32'02" W
R21	N 70°04'46" W
R22	N 22°23'58" E
R23	N 12°28'07" W
R24	N 67°19'35" W
R25	S 83°38'30" W
R26	N 27°26'06" E



SCALE: 1" = 100'

TRACT NO. 3994
 VOLUME 50, PAGES 97-102, F.C.R.

CURVE	RADIUS	LENGTH	TANGENT	DELTA
C1	250.00'	149.79'	77.22'	34°19'43"
C2	277.00'	171.50'	88.60'	35°28'25"
C3	277.00'	45.80'	22.95'	09°28'28"
C4	277.00'	56.89'	28.44'	11°43'31"
C5	277.00'	12.32'	6.16'	02°32'56"
C6	37.00'	24.73'	12.85'	08°15'57"
C8	223.00'	110.20'	56.25'	28°18'50"
C9	47.00'	174.75'	13.94'	21°30'09"
C10	47.00'	56.06'	31.91'	68°20'44"
C11	47.00'	42.00'	22.52'	51°12'02"
C12	47.00'	42.00'	22.52'	51°12'01"
C13	47.00'	34.69'	18.18'	42°17'22"
C14	48.00'	18.54'	9.39'	22°07'57"
C15	48.00'	3.86'	1.93'	04°36'26"
C16	48.00'	14.68'	7.40'	17°31'31"
C17	47.00'	110.15'	111.48'	134°16'42"
C18	47.00'	39.50'	21.00'	48°09'02"
C19	47.00'	40.00'	21.30'	48°45'45"
C20	47.00'	30.65'	15.89'	37°21'55"
C21	48.00'	18.54'	9.39'	22°07'56"
C22	48.00'	18.54'	9.39'	22°07'57"
C23	47.00'	109.75'	110.16'	133°47'26"
C24	47.00'	22.81'	11.64'	27°48'41"
C25	47.00'	40.00'	21.30'	48°45'45"
C26	47.00'	40.00'	21.30'	48°45'44"
C27	47.00'	6.94'	3.47'	08°27'16"
C28	48.00'	19.12'	9.69'	22°49'03"
C29	165.00'	111.35'	57.89'	38°40'01"
C30	140.00'	94.48'	49.12'	38°40'01"
C31	190.00'	128.22'	66.66'	38°40'01"
C32	190.00'	31.81'	15.94'	09°35'30"
C33	190.00'	58.00'	29.23'	17°29'25"
C34	190.00'	38.42'	19.27'	11°35'06"
C35	48.00'	18.54'	9.39'	22°07'57"
C36	47.00'	93.64'	72.58'	114°09'02"
C37	47.00'	28.60'	14.78'	34°52'05"
C38	47.00'	45.00'	24.38'	54°51'28"
C39	47.00'	20.04'	10.17'	24°25'29"
C40	300.00'	202.46'	105.26'	38°40'01"
C41	300.00'	50.22'	25.17'	09°35'30"
C42	300.00'	91.58'	46.15'	17°29'25"
C43	300.00'	60.66'	30.43'	11°35'06"

FRESNO COUNTY BRASS CAP MONUMENT FLUSH, AS BEING THE NORTH QUARTER CORNER OF SECTION 3 TOWNSHIP 12 SOUTH RANGE 19 EAST, MOUNT DIABLO BASE AND MERIDIAN

FRESNO COUNTY BRASS CAP MONUMENT, FLUSH, TAGGED RCE 12769 AS BEING THE SOUTH QUARTER CORNER OF SECTION 34, T. 12 S., R. 19 E., M.D.B. & M. C.R. 3046