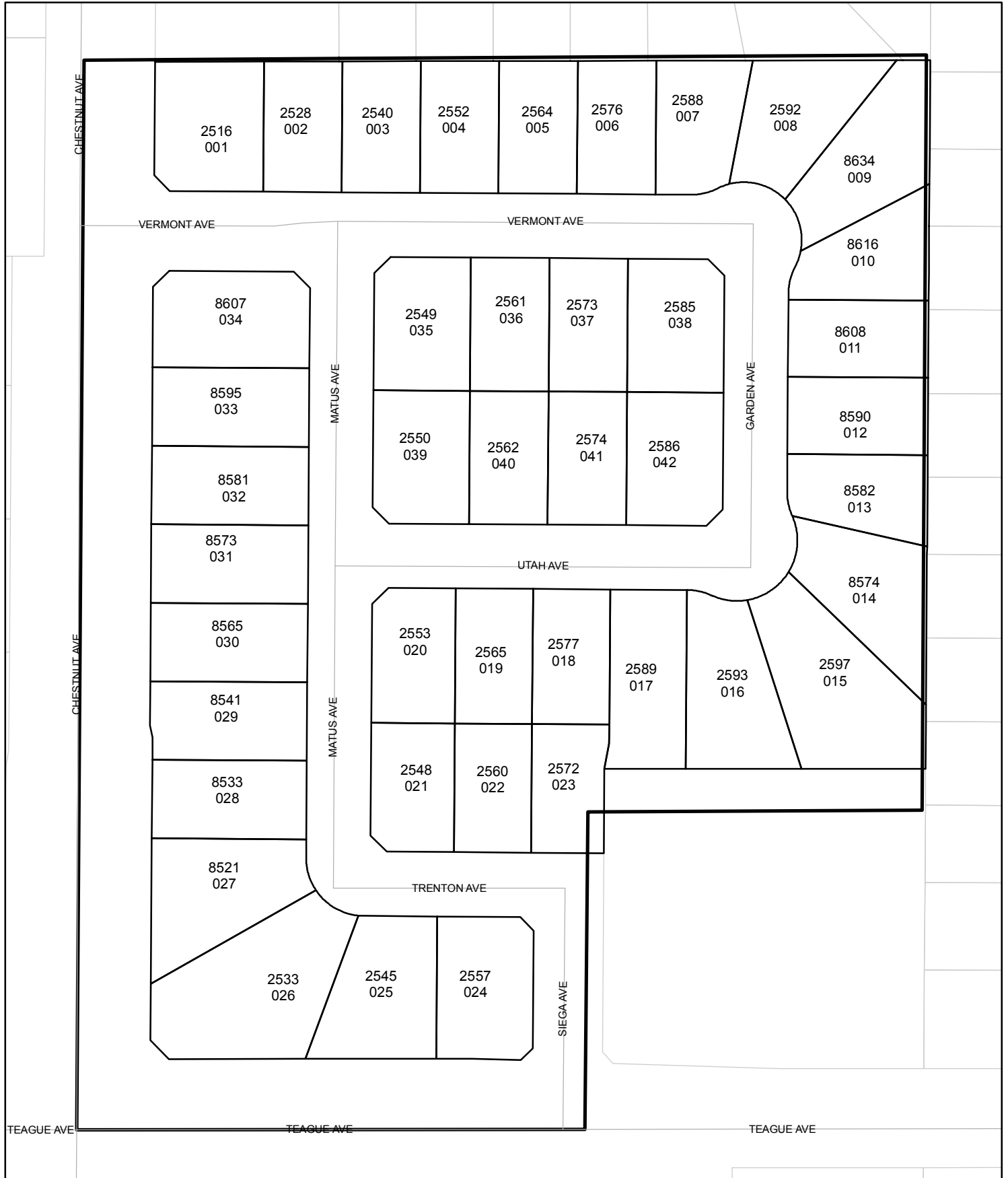




# Street Names, Addresses and (Lot Numbers) for T5553

Prepared on Tue Apr 02 13:41:31 2013

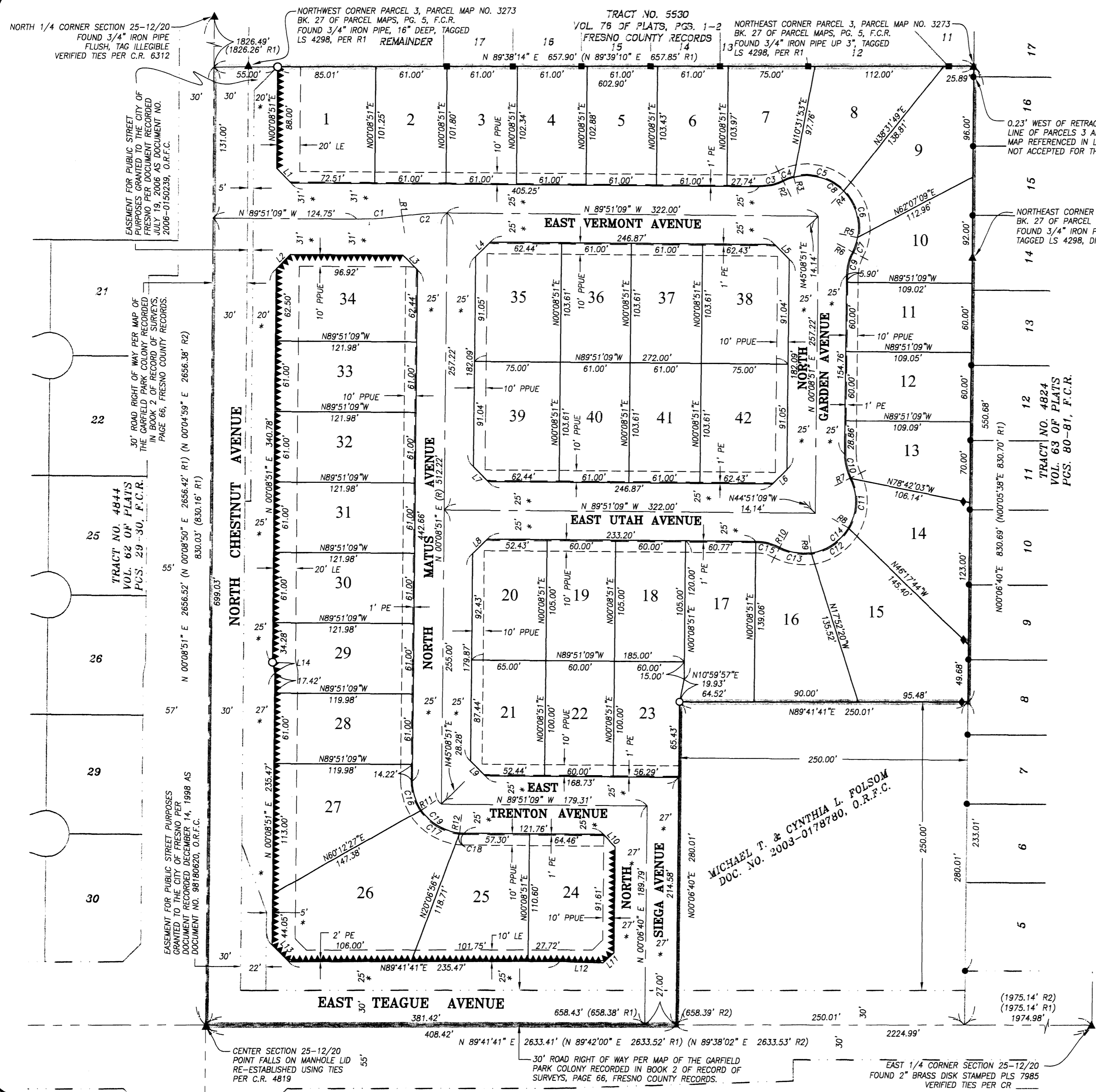


# FINAL MAP OF TRACT NO. 5553

IN THE CITY OF FRESNO, COUNTY OF FRESNO, STATE OF CALIFORNIA, BEING A MERGER AND RESUBDIVISION OF PARCEL 3 AND PORTION OF PARCEL 4 OF PARCEL MAP RECORDED IN BOOK 27 OF PARCEL MAPS, PAGE 5, F.C.R.

SURVEYED AND PLATTED IN MARCH 2006 BY QUAD KNOPF INC.

CONSISTING OF 2 SHEETS SHEET 2 OF 2



### LEGEND

- ▲ MONUMENT FOUND AND ACCEPTED AS DESCRIBED
- FOUND AND ACCEPTED 3/4" IRON PIPE TAGGED RCE 19789, PER R2 UNLESS NOTED OTHERWISE.
- FOUND AND ACCEPTED 3/4" IRON PIPE TAGGED RCE 26996, PER FINAL TRACT MAP NO. 5530, RECORDED IN VOL. 76 OF PLATS, AT PAGES 1 & 2, FRESNO COUNTY RECORDS
- ◆ SET WITNESS CORNER 3/4" X 30" IRON PIPE, DOWN 6", TAGGED PLS 4714 ON LOT LINE AS SHOWN AT 3.00' OFFSET FROM NEAREST LOT CORNER. (DISTANCES SHOWN ARE TO TRUE CORNER) PER CITY OF FRESNO PUBLIC WORKS STANDARD P-38
- SET 3/4" IRON PIPE, 30" LONG, 4" UP IN P.C.C. 6" DIA. MONUMENT TAGGED PLS 4714
- PE PEDESTRIAN EASEMENT NOW OFFERED FOR DEDICATION FOR PUBLIC USE
- PUE PUBLIC UTILITY EASEMENT NOW OFFERED FOR DEDICATION FOR PUBLIC USE
- PPUE PLANTING & PUBLIC UTILITY EASEMENT NOW OFFERED FOR DEDICATION FOR PUBLIC USE
- LE LANDSCAPE EASEMENT NOW OFFERED FOR DEDICATION FOR PUBLIC USE
- (R) RADIAL BEARING
- O.R.F.C. OFFICIAL RECORDS OF FRESNO COUNTY
- F.C.R. FRESNO COUNTY RECORDS
- BLUE BORDER INDICATES LIMITS OF SUBDIVISION
- INDICATES RELINQUISHMENT OF DIRECT ACCESS RIGHTS
- \* INDICATES AREA NOW OFFERED FOR DEDICATION FOR PUBLIC STREET EASEMENT PURPOSES
- R1 RECORD DATA PER PARCEL MAP NO. 3273 RECORDED IN BOOK 27 OF PARCEL MAPS, AT PAGE 5, FRESNO COUNTY RECORDS, OR CALCULATED THEREFROM.
- R2 RECORD DATA PER TRACT NO. 4824 RECORDED IN VOLUME 63 OF PLATS, PAGES 80-81, FRESNO COUNTY RECORDS, OR CALCULATED THEREFROM.

### NOTES

1. SET 3/4" BY 30" IRON PIPE, 6" BELOW SURFACE, TAGGED PLS 4714, AT ALL LOT CORNERS, BEGINNING AND ENDING OF CURVES AND ANGLE POINTS OF RIGHT OF WAY, UNLESS OTHERWISE NOTED.

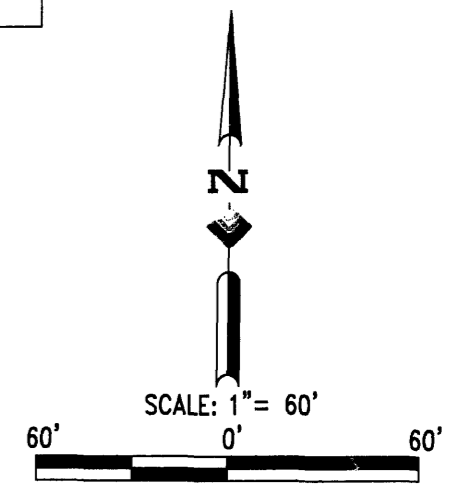
CURVE TABLE			
CURVE	DELTA	RADIUS	LENGTH
C1	8°53'06"	250.00'	38.77'
C2	8°53'06"	250.00'	38.77'
C3	27°15'58"	45.00'	21.41'
C4	12°19'37"	45.00'	9.68'
C5	59°56'21"	45.00'	47.08'
C6	55°31'23"	45.00'	43.61'
C7	16°44'35"	45.00'	13.15'
C8	144°31'56"	45.00'	113.52'
C9	27°15'58"	45.00'	21.41'
C10	27°15'58"	45.00'	21.41'
C11	57°35'19"	45.00'	45.23'
C12	50°55'47"	45.00'	40.00'
C13	36°00'50"	45.00'	28.29'
C14	144°31'56"	45.00'	113.52'
C15	27°15'58"	45.00'	21.41'
C16	34°05'13"	45.00'	26.77'
C17	50°55'37"	45.00'	40.00'
C18	4°59'10"	45.00'	3.92'
C19	90°00'00"	45.00'	70.69'

LINE TABLE		
LINE	BEARING	LENGTH
L1	N44°51'09"W	17.67'
L2	N45°08'14"E	17.67'
L3	N44°51'09"W	17.77'
L4	N45°08'51"E	17.77'
L5	N44°50'57"W	17.77'
L6	N45°09'00"E	17.77'
L7	N44°50'48"W	17.77'
L8	N45°08'51"E	17.77'
L9	N44°51'09"W	17.77'
L10	N44°52'15"W	14.94'
L11	N46°05'42"E	13.19'
L12	N88°23'42"W	37.90'
L13	N45°04'44"W	20.47'
L14	N11°59'05"W	9.51'

RADIAL TABLE	
RADIAL	BEARING
R1	S08°44'15"E
R2	S27°07'07"E
R3	N14°47'30"W
R4	N45°08'51"E
R5	S79°19'46"E
R6	S62°35'11"E
R7	N62°52'53"E
R8	S59°31'48"E
R9	S08°36'01"E
R10	S27°24'49"W
R11	S56°03'38"W
R12	S05°08'01"W

### BASIS OF BEARINGS

THE NORTH LINE OF THE NORTHEAST QUARTER OF SECTION 25, TOWNSHIP 12 SOUTH, RANGE 20 EAST, MOUNT DIABLO BASE AND MERIDIAN, SHOWN TO BEAR NORTH 89°32'48" EAST, PER PARCEL MAP NO. 3273 RECORDED IN BOOK 27 OF PARCEL MAPS AT PAGE 5, FRESNO COUNTY RECORDS.



MICHAEL T. & CYNTHIA L. FOLSOM  
DOC. NO. 2003-0178780, O.R.F.C.