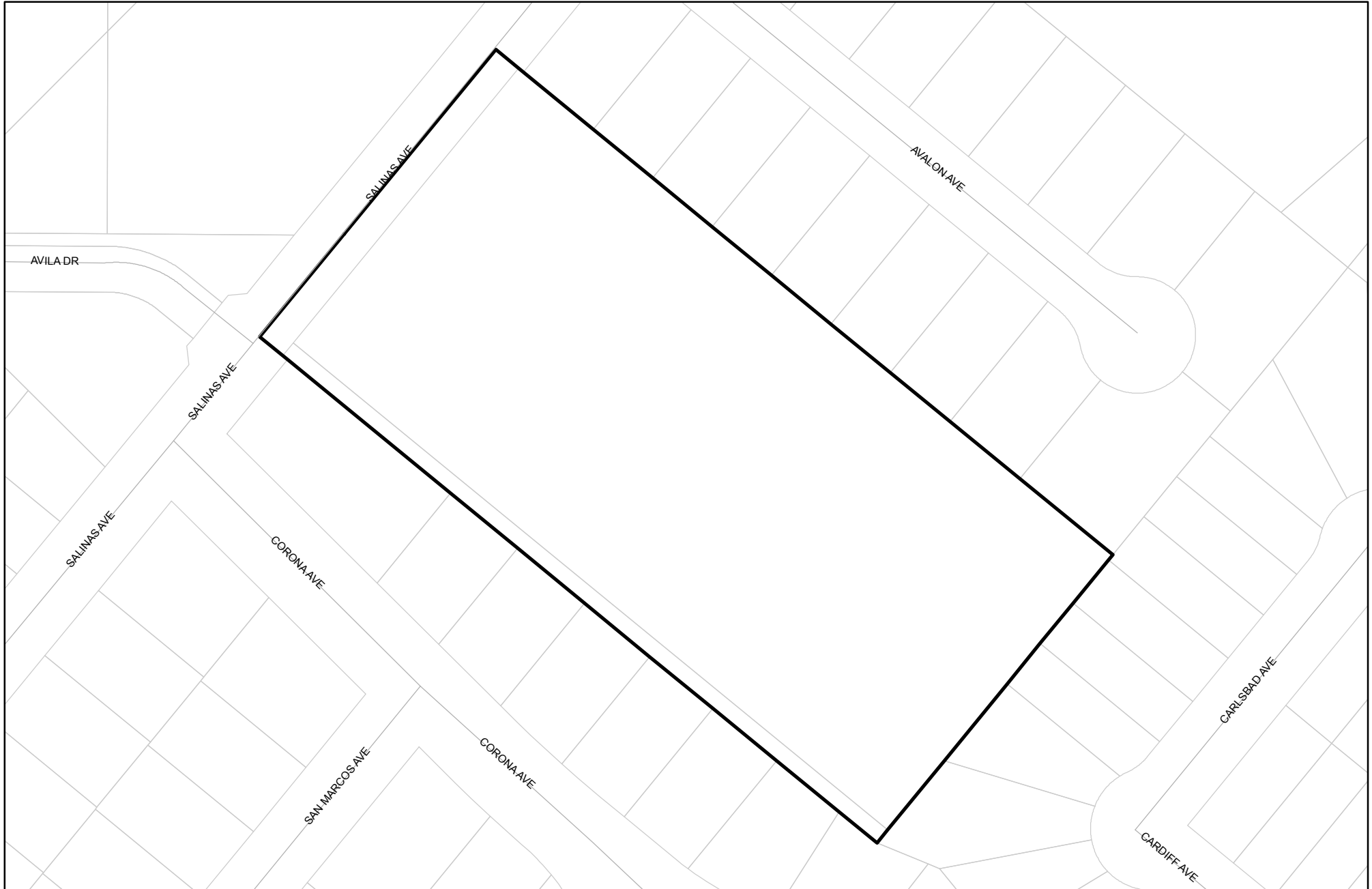




Prepared on Tue Apr 02 13:41:54 2013

Street Names, Addresses and (Lot Numbers) for T5551



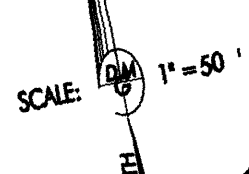
FINAL MAP OF TRACT NO. 5551

A PLANNED DEVELOPMENT OF
 LOTS BEING A RESUBDIVISION OF
 IRRIGATED, SUBDIVISION NO. 6, BEARING LANS
 IN THE CITY OF FRESNO
 FRESNO COUNTY, CALIFORNIA
 SURVEYED AND PLATED IN JUNE, 2007
 BY DALE G. MELI & ASSOCIATES
 SHEET 2 OF 3 SHEETS

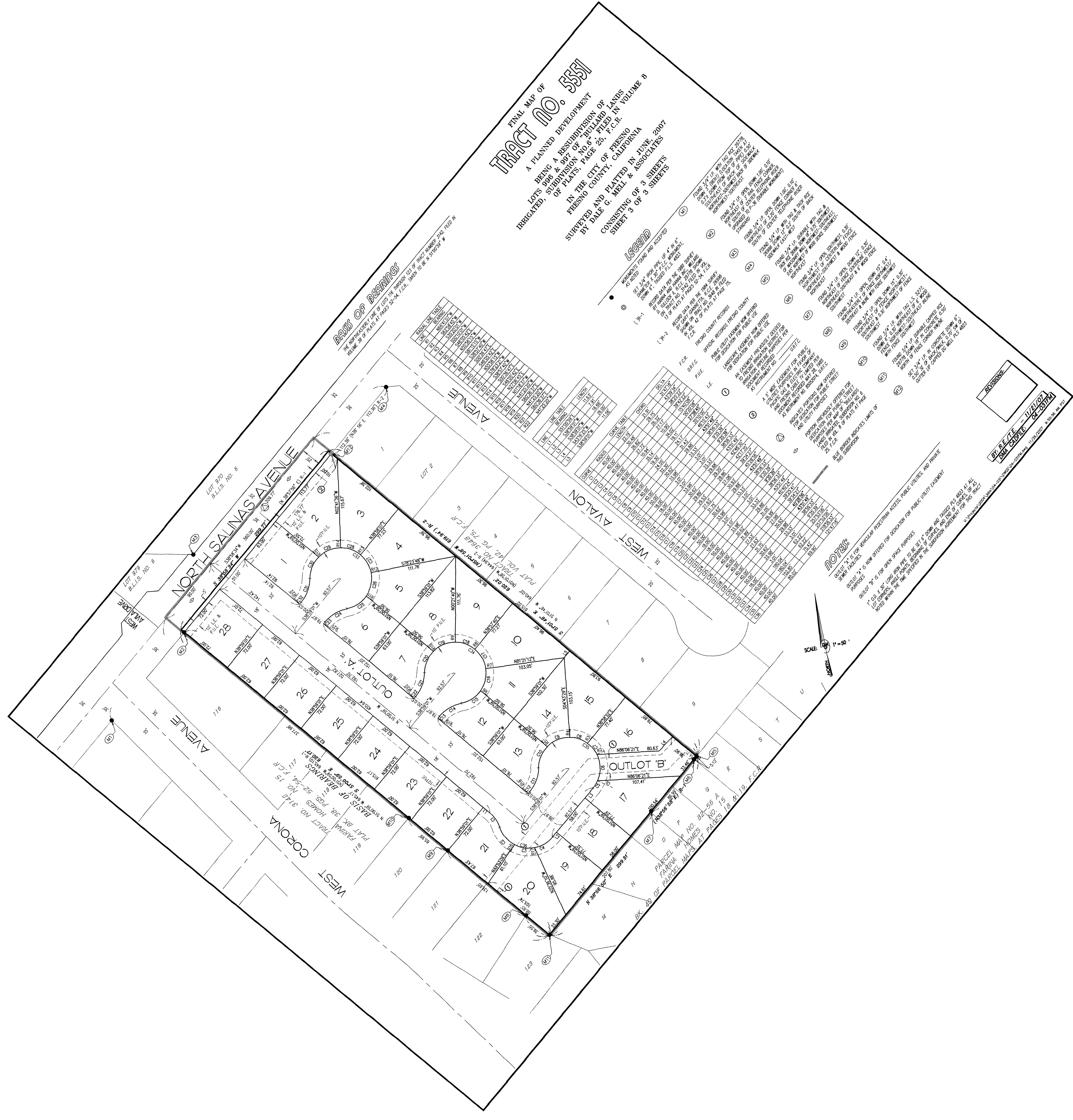
Dale G. Meli & Associates
 REGISTERED PROFESSIONAL LAND SURVEYORS
 1411 N. G ST. #200, FRESNO, CA 93703
 TEL: 559-233-1111 FAX: 559-233-1112

LEGEND

- (1) UNIMPROVED TRACTS AND ADJACENT AS SHOWN
- (2) 1/4 AC. PER LOT FOR 1/4 AC. LOTS
- (3) 1/2 AC. PER LOT FOR 1/2 AC. LOTS
- (4) 3/4 AC. PER LOT FOR 3/4 AC. LOTS
- (5) 1 AC. PER LOT FOR 1 AC. LOTS
- (6) 1/4 AC. PER LOT FOR 1/4 AC. LOTS
- (7) 1/2 AC. PER LOT FOR 1/2 AC. LOTS
- (8) 3/4 AC. PER LOT FOR 3/4 AC. LOTS
- (9) 1 AC. PER LOT FOR 1 AC. LOTS
- (10) 1/4 AC. PER LOT FOR 1/4 AC. LOTS
- (11) 1/2 AC. PER LOT FOR 1/2 AC. LOTS
- (12) 3/4 AC. PER LOT FOR 3/4 AC. LOTS
- (13) 1 AC. PER LOT FOR 1 AC. LOTS
- (14) 1/4 AC. PER LOT FOR 1/4 AC. LOTS
- (15) 1/2 AC. PER LOT FOR 1/2 AC. LOTS
- (16) 3/4 AC. PER LOT FOR 3/4 AC. LOTS
- (17) 1 AC. PER LOT FOR 1 AC. LOTS
- (18) 1/4 AC. PER LOT FOR 1/4 AC. LOTS
- (19) 1/2 AC. PER LOT FOR 1/2 AC. LOTS
- (20) 3/4 AC. PER LOT FOR 3/4 AC. LOTS
- (21) 1 AC. PER LOT FOR 1 AC. LOTS
- (22) 1/4 AC. PER LOT FOR 1/4 AC. LOTS
- (23) 1/2 AC. PER LOT FOR 1/2 AC. LOTS
- (24) 3/4 AC. PER LOT FOR 3/4 AC. LOTS
- (25) 1 AC. PER LOT FOR 1 AC. LOTS
- (26) 1/4 AC. PER LOT FOR 1/4 AC. LOTS
- (27) 1/2 AC. PER LOT FOR 1/2 AC. LOTS
- (28) 3/4 AC. PER LOT FOR 3/4 AC. LOTS
- (29) 1 AC. PER LOT FOR 1 AC. LOTS
- (30) 1/4 AC. PER LOT FOR 1/4 AC. LOTS
- (31) 1/2 AC. PER LOT FOR 1/2 AC. LOTS
- (32) 3/4 AC. PER LOT FOR 3/4 AC. LOTS
- (33) 1 AC. PER LOT FOR 1 AC. LOTS
- (34) 1/4 AC. PER LOT FOR 1/4 AC. LOTS
- (35) 1/2 AC. PER LOT FOR 1/2 AC. LOTS
- (36) 3/4 AC. PER LOT FOR 3/4 AC. LOTS
- (37) 1 AC. PER LOT FOR 1 AC. LOTS
- (38) 1/4 AC. PER LOT FOR 1/4 AC. LOTS
- (39) 1/2 AC. PER LOT FOR 1/2 AC. LOTS
- (40) 3/4 AC. PER LOT FOR 3/4 AC. LOTS
- (41) 1 AC. PER LOT FOR 1 AC. LOTS
- (42) 1/4 AC. PER LOT FOR 1/4 AC. LOTS
- (43) 1/2 AC. PER LOT FOR 1/2 AC. LOTS
- (44) 3/4 AC. PER LOT FOR 3/4 AC. LOTS
- (45) 1 AC. PER LOT FOR 1 AC. LOTS
- (46) 1/4 AC. PER LOT FOR 1/4 AC. LOTS
- (47) 1/2 AC. PER LOT FOR 1/2 AC. LOTS
- (48) 3/4 AC. PER LOT FOR 3/4 AC. LOTS
- (49) 1 AC. PER LOT FOR 1 AC. LOTS
- (50) 1/4 AC. PER LOT FOR 1/4 AC. LOTS
- (51) 1/2 AC. PER LOT FOR 1/2 AC. LOTS
- (52) 3/4 AC. PER LOT FOR 3/4 AC. LOTS
- (53) 1 AC. PER LOT FOR 1 AC. LOTS
- (54) 1/4 AC. PER LOT FOR 1/4 AC. LOTS
- (55) 1/2 AC. PER LOT FOR 1/2 AC. LOTS
- (56) 3/4 AC. PER LOT FOR 3/4 AC. LOTS
- (57) 1 AC. PER LOT FOR 1 AC. LOTS
- (58) 1/4 AC. PER LOT FOR 1/4 AC. LOTS
- (59) 1/2 AC. PER LOT FOR 1/2 AC. LOTS
- (60) 3/4 AC. PER LOT FOR 3/4 AC. LOTS
- (61) 1 AC. PER LOT FOR 1 AC. LOTS
- (62) 1/4 AC. PER LOT FOR 1/4 AC. LOTS
- (63) 1/2 AC. PER LOT FOR 1/2 AC. LOTS
- (64) 3/4 AC. PER LOT FOR 3/4 AC. LOTS
- (65) 1 AC. PER LOT FOR 1 AC. LOTS
- (66) 1/4 AC. PER LOT FOR 1/4 AC. LOTS
- (67) 1/2 AC. PER LOT FOR 1/2 AC. LOTS
- (68) 3/4 AC. PER LOT FOR 3/4 AC. LOTS
- (69) 1 AC. PER LOT FOR 1 AC. LOTS
- (70) 1/4 AC. PER LOT FOR 1/4 AC. LOTS
- (71) 1/2 AC. PER LOT FOR 1/2 AC. LOTS
- (72) 3/4 AC. PER LOT FOR 3/4 AC. LOTS
- (73) 1 AC. PER LOT FOR 1 AC. LOTS
- (74) 1/4 AC. PER LOT FOR 1/4 AC. LOTS
- (75) 1/2 AC. PER LOT FOR 1/2 AC. LOTS
- (76) 3/4 AC. PER LOT FOR 3/4 AC. LOTS
- (77) 1 AC. PER LOT FOR 1 AC. LOTS
- (78) 1/4 AC. PER LOT FOR 1/4 AC. LOTS
- (79) 1/2 AC. PER LOT FOR 1/2 AC. LOTS
- (80) 3/4 AC. PER LOT FOR 3/4 AC. LOTS
- (81) 1 AC. PER LOT FOR 1 AC. LOTS
- (82) 1/4 AC. PER LOT FOR 1/4 AC. LOTS
- (83) 1/2 AC. PER LOT FOR 1/2 AC. LOTS
- (84) 3/4 AC. PER LOT FOR 3/4 AC. LOTS
- (85) 1 AC. PER LOT FOR 1 AC. LOTS
- (86) 1/4 AC. PER LOT FOR 1/4 AC. LOTS
- (87) 1/2 AC. PER LOT FOR 1/2 AC. LOTS
- (88) 3/4 AC. PER LOT FOR 3/4 AC. LOTS
- (89) 1 AC. PER LOT FOR 1 AC. LOTS
- (90) 1/4 AC. PER LOT FOR 1/4 AC. LOTS
- (91) 1/2 AC. PER LOT FOR 1/2 AC. LOTS
- (92) 3/4 AC. PER LOT FOR 3/4 AC. LOTS
- (93) 1 AC. PER LOT FOR 1 AC. LOTS
- (94) 1/4 AC. PER LOT FOR 1/4 AC. LOTS
- (95) 1/2 AC. PER LOT FOR 1/2 AC. LOTS
- (96) 3/4 AC. PER LOT FOR 3/4 AC. LOTS
- (97) 1 AC. PER LOT FOR 1 AC. LOTS
- (98) 1/4 AC. PER LOT FOR 1/4 AC. LOTS
- (99) 1/2 AC. PER LOT FOR 1/2 AC. LOTS
- (100) 3/4 AC. PER LOT FOR 3/4 AC. LOTS



BY STATE OF CALIFORNIA
 DALE G. MELI
 REGISTERED PROFESSIONAL LAND SURVEYOR
 No. 41723
 State of California
 Commission Expires 12/31/2009



LOT #	ACREAGE	AREA	PERCENTAGE
1	0.12	0.12	1.00
2	0.12	0.12	1.00
3	0.12	0.12	1.00
4	0.12	0.12	1.00
5	0.12	0.12	1.00
6	0.12	0.12	1.00
7	0.12	0.12	1.00
8	0.12	0.12	1.00
9	0.12	0.12	1.00
10	0.12	0.12	1.00
11	0.12	0.12	1.00
12	0.12	0.12	1.00
13	0.12	0.12	1.00
14	0.12	0.12	1.00
15	0.12	0.12	1.00
16	0.12	0.12	1.00
17	0.12	0.12	1.00
18	0.12	0.12	1.00
19	0.12	0.12	1.00
20	0.12	0.12	1.00

LOT #	ACREAGE	AREA	PERCENTAGE
21	0.12	0.12	1.00
22	0.12	0.12	1.00
23	0.12	0.12	1.00
24	0.12	0.12	1.00
25	0.12	0.12	1.00
26	0.12	0.12	1.00
27	0.12	0.12	1.00
28	0.12	0.12	1.00
29	0.12	0.12	1.00
30	0.12	0.12	1.00

TRACT NO. 5142
 S. ANNA HAYES
 PLAT BK. 221 PGS. 52-54
 F.C.R.
 1/16/1915

PARCEL MAP NO. 24-56
 F.C.R. NO. 175
 F.C.R. NO. 175
 F.C.R. NO. 175
 F.C.R. NO. 175