



Prepared on Tue Apr 02 13:42:21 2013

Street Names, Addresses and (Lot Numbers) for T5537



TRACT NO. 5537

IN THE CITY OF FRESNO,
FRESNO COUNTY, CALIFORNIA
SURVEYED AND PLATTED IN MARCH, 2007
BY DIXON & ASSOCIATES, INC.
CONSISTING OF 3 SHEETS
SHEET 2 OF 3

BASIS OF BEARINGS:

THE WEST LINE OF THE SOUTHWEST QUARTER OF SECTION 22-13/19, M.D.B.&M. WAS TAKEN TO BE NORTH AS SHOWN ON PARCEL MAP NO. 2777, RECORDED IN BOOK 19 OF PARCEL MAPS AT PAGE 14, FRESNO COUNTY RECORDS.

NOTES:

3/4" X 30" IRON PIPE, DOWN 0.5', TAGGED LS 5277 SET AT ALL LOT CORNERS, BLOCK CORNERS AND BEGINNING AND ENDING OF ALL CURVES, OR WILL BE SET WITHIN ONE YEAR OR ANY APPROVED EXTENSION THEREOF.

WEST QUARTER CORNER OF SECTION 22-13/19 M.D.B.&M., FOUND 1" IRON PIPE, DOWN 0.5', VERIFIED POSITION BY TIES ON FILE WITH FRESNO COUNTY SURVEYOR, CORNER RECORD NO. 7296

CENTER QUARTER CORNER OF SECTION 22-13/19, FOUND 3/4" IRON PIPE DOWN 0.3', VERIFIED POSITION BY TIES ON FILE WITH FRESNO COUNTY SURVEYOR, CORNER RECORD NO. 5697

FOUND 3/4" IRON PIPE FLUSH, TAGGED LS 5277 ALSO FOUND 3/4" IRON PIPE FLUSH, TAGGED RCE 2484, 0.20' SOUTH AND 0.30' EAST OF TRUE POSITION. DID NOT ACCEPT. MONUMENT DESTROYED WITH CONSTRUCTION OF DURABLE MONUMENT AT TRUE POSITION.

FOUND 3/4" IRON PIPE UP 0.20', TAGGED LS 5277 ALSO FOUND 3/4" IRON PIPE UP 0.3', TAGGED RCE 2484, 0.28' SOUTH OF TRUE POSITION. DID NOT ACCEPT. MONUMENT DESTROYED WITH CONSTRUCTION OF DURABLE MONUMENT AT TRUE POSITION.

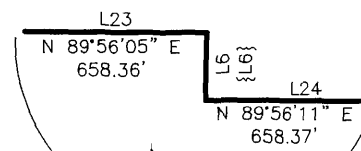
FOUND 3/4" IRON PIPE DOWN 0.50', TAGGED LS 5277 ALSO FOUND 3/4" IRON PIPE FLUSH, NO TAG, 0.27' SOUTH AND 0.05' EAST OF TRUE POSITION. DID NOT ACCEPT. MONUMENT DESTROYED WITH CONSTRUCTION OF DURABLE MONUMENT AT TRUE POSITION.

PARCEL 1
PARCEL MAP NO. 2659 BOOK 17 OF PARCEL MAPS AT PAGE 48 FRESNO COUNTY RECORDS.

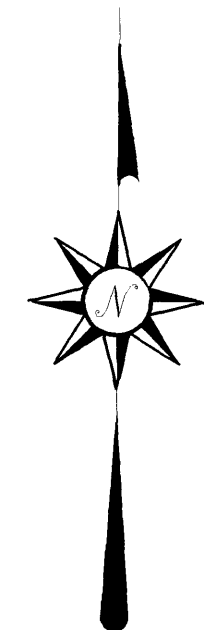
PARCEL 2

LEGEND:

- MONUMENT FOUND AND ACCEPTED AS NOTED.
- ⊙ SET 3/4" X 30" IRON PIPE, UP 4" IN 6" PCC MONUMENT, DOWN 6", TAGGED LS 5277.
- ⊙ FOUND AND ACCEPTED MONUMENT AS DESCRIBED HEREON, RESET WITH 3/4" X 30" IRON PIPE, UP 4" IN 6" PCC MONUMENT, DOWN 6", TAGGED LS 5277.
- () INDICATES RECORD DATA AS SHOWN ON PARCEL MAP NO. 2659 RECORDED IN BOOK 17 OF PARCEL MAPS AT PAGE 48, FRESNO COUNTY RECORDS.
- [] INDICATES RECORD DATA AS SHOWN ON PARCEL MAP NO. 2876 RECORDED IN BOOK 19 OF PARCEL MAPS AT PAGE 64, FRESNO COUNTY RECORDS.
- < > INDICATES RECORD DATA AS SHOWN ON PARCEL MAP NO. 2777 RECORDED IN BOOK 19 OF PARCEL MAPS AT PAGE 14, FRESNO COUNTY RECORDS.
- { } INDICATES RECORD DATA AS SHOWN ON THE RECORD OF SURVEY RECORDED IN BOOK 50 OF RECORD OF SURVEYS AT PAGE 85, FRESNO COUNTY RECORDS.
- ▲ NOW OFFERED FOR DEDICATION FOR PUBLIC STREET AND UTILITY PURPOSES.
- LE LANDSCAPE EASEMENT NOW OFFERED FOR DEDICATION FOR PUBLIC USE.
- PPUE PLANTING AND PUBLIC UTILITY EASEMENT NOW OFFERED FOR DEDICATION FOR PUBLIC USE.
- ***** INDICATES RELINQUISHMENT OF DIRECT VEHICULAR ACCESS RIGHTS.
- THE BLUE BORDER INDICATES THE LIMITS OF THIS SUBDIVISION.



DETAIL NOT TO SCALE



SCALE: 1" = 80'



SOUTH QUARTER CORNER SECTION 22-13/19, FOUND 3/4" IRON PIPE, DOWN 0.5', TAGGED 10782, VERIFIED POSITION BY TIES ON FILE WITH FRESNO COUNTY SURVEYOR, CORNER RECORD NO. 2924