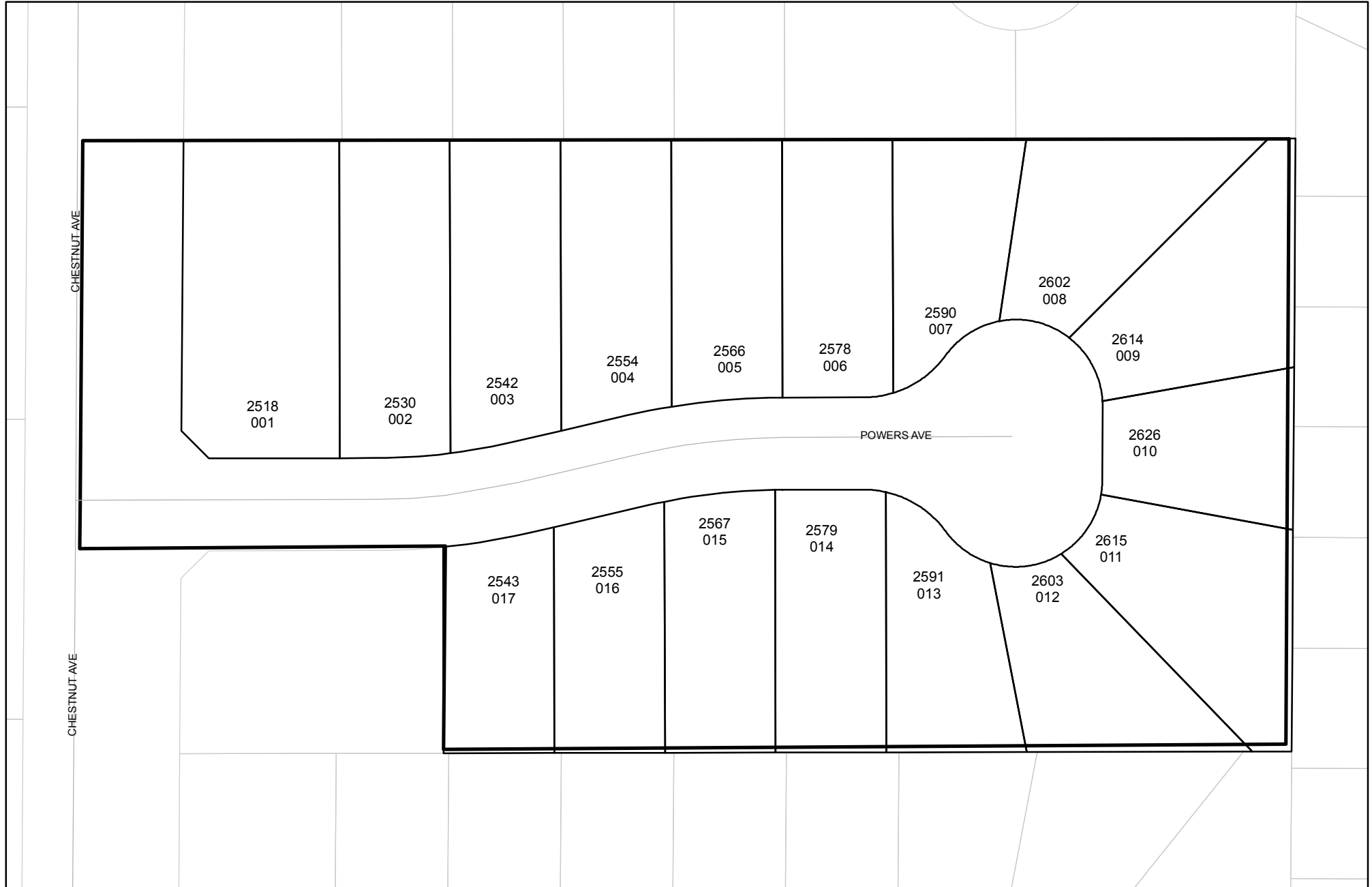




Prepared on Tue Apr 02 13:43:34 2013

Street Names, Addresses and (Lot Numbers) for T5530



TRACT NO. 5530

IN THE CITY OF FRESNO, COUNTY OF FRESNO, STATE OF CALIFORNIA
 SURVEYED AND PLATTED IN NOVEMBER 2005 BY GARY G. GIANNETTA

**CONSISTING OF TWO SHEETS
 SHEET TWO OF TWO SHEETS**

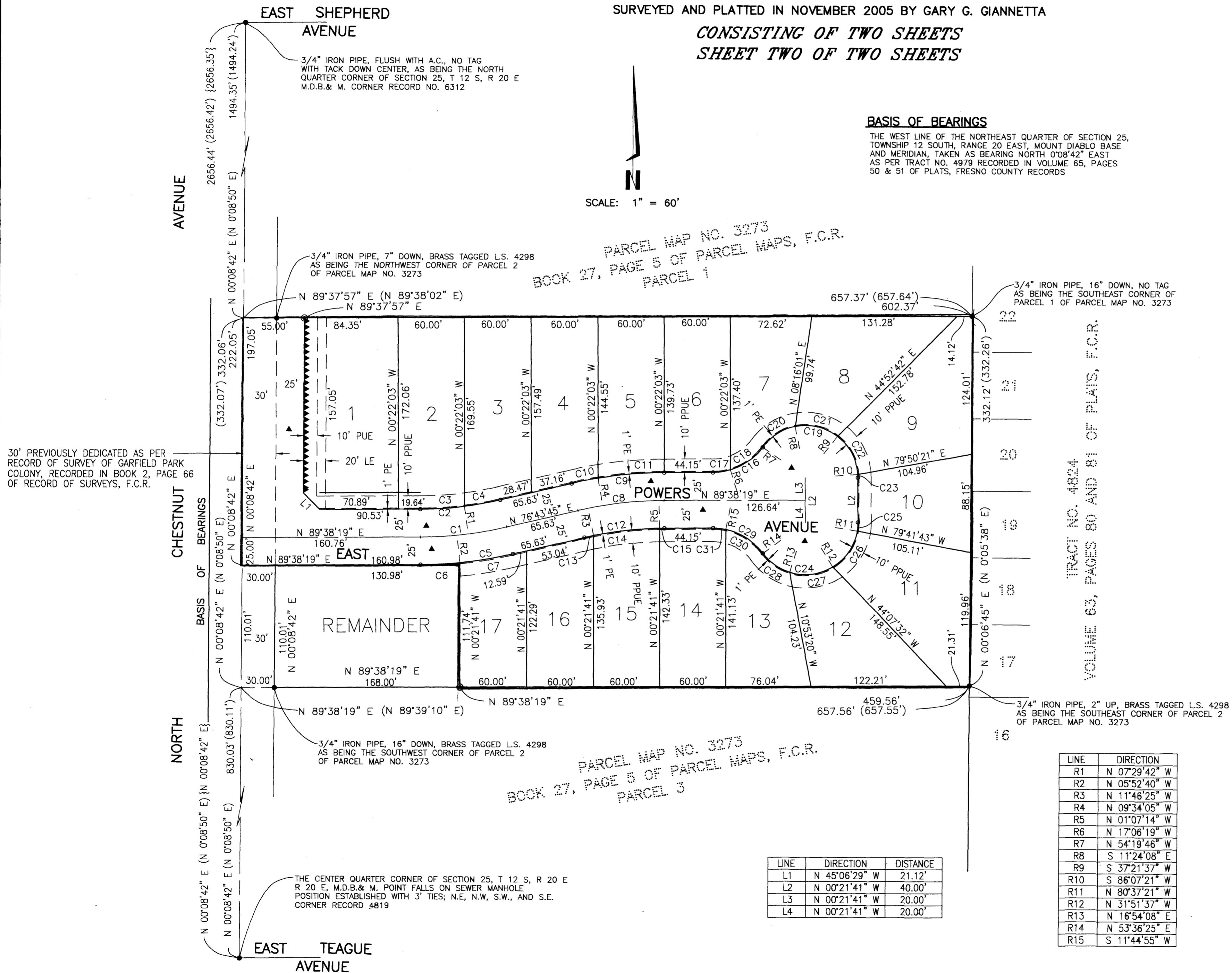
LEGEND:

- MONUMENT FOUND AND ACCEPTED AS NOTED
- ⊙ SET 3/4" IRON PIPE, 30" LONG, 4" UP IN 6" DIAMETER x 30" CONCRETE MONUMENT, DOWN 6" BELOW GROUND, TAGGED R.C.E. 26996
- SET 3/4" IRON PIPE, 30" LONG, 6" DOWN BELOW GROUND, TAGGED R.C.E. 26996
- ▲ NOW OFFERED FOR DEDICATION FOR PUBLIC STREET PURPOSES
- ▲▲▲▲ INDICATES RELINQUISHMENT OF DIRECT ACCESS RIGHTS
- () RECORD DATA AS PER PARCEL MAP NO. 3273, RECORDED IN BOOK 27, PAGE 5 OF PARCEL MAPS, F.C.R.
- [] RECORD DATA AS PER RECORD OF SURVEY OF GARFIELD PARK COLONY, RECORDED IN BOOK 2, PAGE 66 OF RECORD OF SURVEYS, F.C.R.
- { } RECORD DATA AS PER MAP OF TRACT NO. 4979, RECORDED VOLUME 65, PAGES 50 AND 51 OF PLATS, F.C.R.
- F.C.R. FRESNO COUNTY RECORDS
- LE LANDSCAPE EASEMENT NOW OFFERED FOR DEDICATION FOR PUBLIC USE
- PE PEDESTRIAN EASEMENT NOW OFFERED FOR DEDICATION FOR PUBLIC USE
- PUE PUBLIC UTILITY EASEMENT NOW OFFERED FOR DEDICATION FOR PUBLIC USE
- PPUE PLANTING AND PUBLIC UTILITY EASEMENT NOW OFFERED FOR DEDICATION FOR PUBLIC USE
- (R) DENOTES RADIAL BEARING
- CALC CALCULATED FROM RECORD DATA
- BLUE BORDER INDICATES THE LIMITS OF THIS SUBDIVISION

BASIS OF BEARINGS

THE WEST LINE OF THE NORTHEAST QUARTER OF SECTION 25, TOWNSHIP 12 SOUTH, RANGE 20 EAST, MOUNT DIABLO BASE AND MERIDIAN, TAKEN AS BEARING NORTH 0°08'42" EAST AS PER TRACT NO. 4979 RECORDED IN VOLUME 65, PAGES 50 & 51 OF PLATS, FRESNO COUNTY RECORDS

SCALE: 1" = 60'



PARCEL MAP NO. 3273
 BOOK 27, PAGE 5 OF PARCEL MAPS, F.C.R.
 PARCEL 1

PARCEL MAP NO. 3273
 BOOK 27, PAGE 5 OF PARCEL MAPS, F.C.R.
 PARCEL 3

TRACT NO. 4824
 VOLUME 63, PAGES 80 AND 81 OF PLATS, F.C.R.

NOTE:

1. SET 3/4" IRON PIPE, 6" DOWN, TAGGED RCE 26996 AT ALL LOT CORNERS

CURVE	RADIUS	LENGTH	TANGENT	DELTA
C1	350.00'	78.86'	39.60'	12°54'34"
C2	325.00'	73.23'	36.77'	12°54'34"
C3	325.00'	40.46'	20.26'	07°08'01"
C4	325.00'	32.76'	16.40'	05°46'33"
C5	375.00'	84.49'	42.43'	12°54'34"
C6	375.00'	36.10'	18.07'	05°30'59"
C7	375.00'	48.39'	24.23'	07°23'35"
C8	350.00'	78.86'	39.60'	12°54'34"
C9	375.00'	84.49'	42.43'	12°54'34"
C10	375.00'	24.23'	12.12'	03°42'10"
C11	375.00'	60.26'	30.19'	09°12'24"
C12	325.00'	73.23'	36.77'	12°54'34"
C13	325.00'	8.49'	4.25'	01°29'50"
C14	325.00'	60.43'	30.30'	10°39'11"
C15	325.00'	4.31'	2.15'	00°45'33"
C16	55.00'	51.81'	28.00'	53°58'05"
C17	55.00'	16.07'	8.09'	16°44'38"
C18	55.00'	35.73'	18.52'	37°13'27"
C19	47.00'	118.10'	144.51'	143°58'05"
C20	47.00'	35.21'	18.48'	42°55'38"
C21	47.00'	40.00'	21.30'	48°45'45"
C22	47.00'	40.00'	21.30'	48°45'44"
C23	47.00'	2.88'	1.44'	03°30'58"
C24	47.00'	118.10'	144.52'	143°58'06"
C25	47.00'	7.99'	4.00'	09°44'20"
C26	47.00'	40.00'	21.30'	48°45'44"
C27	47.00'	40.00'	21.30'	48°45'45"
C28	47.00'	30.11'	15.59'	36°42'17"
C29	55.00'	51.81'	28.00'	53°58'06"
C30	55.00'	40.18'	21.03'	41°51'30"
C31	55.00'	11.62'	5.83'	12°06'36"

LINE	DIRECTION
R1	N 07°29'42" W
R2	N 05°52'40" W
R3	N 11°46'25" W
R4	N 09°34'05" W
R5	N 01°07'14" W
R6	N 17°06'19" W
R7	N 54°19'46" W
R8	S 11°24'08" E
R9	S 37°21'37" W
R10	S 86°07'21" W
R11	N 80°37'21" W
R12	N 31°51'37" W
R13	N 16°54'08" E
R14	N 53°36'25" E
R15	S 11°44'55" W

LINE	DIRECTION	DISTANCE
L1	N 45°06'29" W	21.12'
L2	N 00°21'41" W	40.00'
L3	N 00°21'41" W	20.00'
L4	N 00°21'41" W	20.00'