



Prepared on Tue Apr 02 13:43:45 2013

# Street Names, Addresses and (Lot Numbers) for T5527



# FINAL MAP OF TRACT NO. 5527

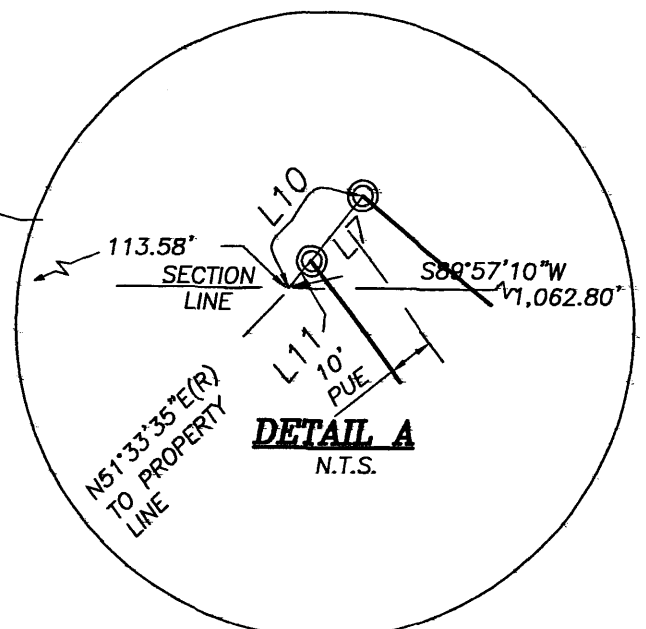
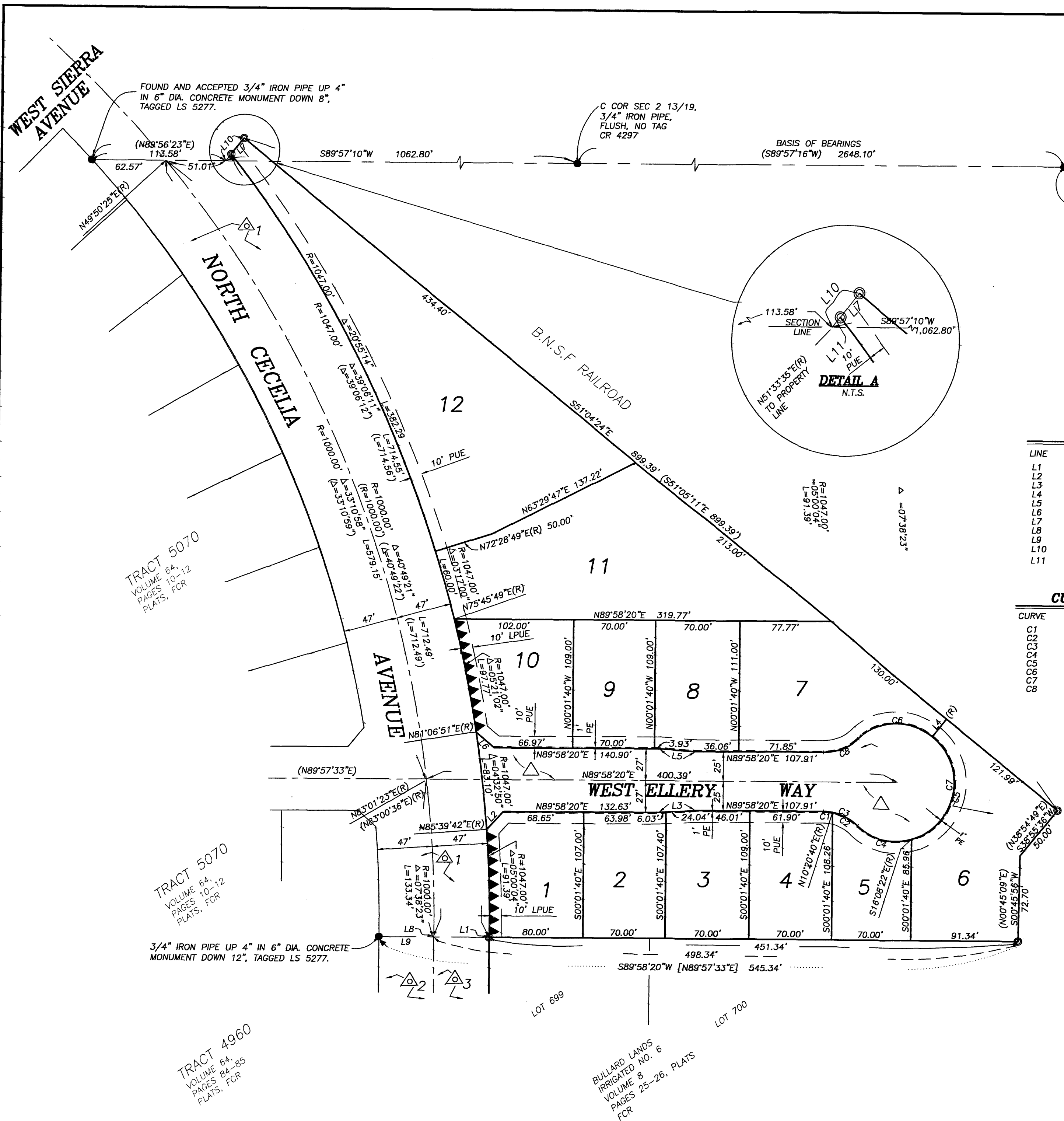
CONSISTING OF TWO SHEETS  
SHEET 2 OF 2

IN THE CITY OF FRESNO,  
FRESNO COUNTY, CALIFORNIA

SURVEYED AND PLATTED IN JANUARY, 2005

RABE ENGINEERING, INC.

2021 N. GATEWAY BLVD., FRESNO, CALIFORNIA  
(559) 252-7223



**LINE DATA**

LINE	BEARING	LENGTH
L1	N00°39'46"E	0.39'
L2	N42°55'14"E	20.89'
L3	N86°09'30"E	30.07'
L4	N38°13'33"E(R)	19.11'
L5	S86°12'49"W	30.07'
L6	N49°31'26"W	20.37'
L7	N38°55'36"E (N38°54'49"E)	17.35'
L8	N00°39'46"E	0.98'
L9	N89°57'33"E	47.00'
L10	N38°55'36"E (N38°54'49"E)	25.00'
L11	N38°55'36"E (N38°54'49"E)	7.65'

**CURVE DATA**

CURVE	RADIUS	DELTA	LENGTH
C1	45.00'	10°22'20"	8.15'
C2	45.00'	32°09'53"	25.26'
C3	45.00'	42°32'13"	33.41'
C4	50.00'	58°38'55"	51.18'
C5	50.00'	125°38'05"	109.64'
C6	50.00'	80°47'25"	70.50'
C7	50.00'	265°04'25"	231.32'
C8	45.00'	42°32'12"	33.41'

**LEGEND**

- MONUMENT FOUND AND ACCEPTED AS NOTED
- SET 1" OD IRON PIPE 30" LONG UP 4" IN 6" DIA. X 30" CONCRETE MONUMENT DOWN 6", TAGGED RCE 20816.
- ( ) RECORD DATA PER MAP OF TRACT NO. 5070 AS RECORDED IN VOLUME 68 OF PLATS, AT PAGES 10 THROUGH 12, FRESNO COUNTY RECORDS.
- [ ] RECORD DATA PER MAP OF TRACT NO. 4960 AS RECORDED IN VOLUME 64 OF PLATS, AT PAGES 84 AND 85, FRESNO COUNTY RECORDS.
- △<sub>1</sub> INDICATES PREVIOUSLY DEDICATED FOR PUBLIC STREET PURPOSES AS SHOWN ON THE MAP OF TRACT NO. 5070, RECORDED IN VOLUME 64 OF PLATS AT PAGES 10 THRU 12, FRESNO COUNTY RECORDS.
- △<sub>2</sub> INDICATES PREVIOUSLY DEDICATED FOR PUBLIC STREET PURPOSES AS SHOWN ON THE MAP OF TRACT NO. 4960, RECORDED IN VOLUME 64 OF PLATS AT PAGES 84 AND 85, FRESNO COUNTY RECORDS.
- △<sub>3</sub> PREVIOUSLY DEDICATED FOR PUBLIC STREET PURPOSES BY DEED RECORDED MARCH 9, 2001, DOC. 2001-0031336, FCR.
- △ NOW OFFERED FOR DEDICATION FOR PUBLIC STREET PURPOSES
- ▲▲▲ INDICATES RELINQUISHMENT OF DIRECT ACCESS RIGHTS
- PUE PUBLIC UTILITY EASEMENT NOW OFFERED FOR DEDICATION FOR PUBLIC USE
- LPUE LANDSCAPE AND PUBLIC UTILITY EASEMENT NOW OFFERED FOR DEDICATION FOR PUBLIC USE
- PE PEDESTRIAN EASEMENT NOW OFFERED FOR DEDICATION FOR PUBLIC USE
- (R) RADIAL
- CR CORNER RECORD ON FILE WITH THE FRESNO COUNTY SURVEYOR
- BLUE BORDER INDICATES THE LIMITS OF THIS SUBDIVISION
- ⊥ 1" OD X 30" LONG IRON PIPE TO BE SET DOWN 6", TAGGED RCE 20816, AT ALL LOT CORNERS, ANGLE POINTS AND BEGINNING AND ENDS OF CURVES WITHIN THE TIME SPECIFIED IN THE SUBDIVISION AGREEMENT FOR THIS TRACT.

SCALE: 1"=60'

**BASIS OF BEARINGS**

THE NORTH LINE OF THE SOUTHEAST QUARTER OF SECTION 2, TOWNSHIP 13 SOUTH, RANGE 19 EAST, M.D.B.&M. AS SHOWN ON THE MAP OF TRACT NO. 5278 ACCORDING TO THE MAP THEREOF RECORDED IN VOLUME 74 OF PLATS, AT PAGES 12 THROUGH 16, FRESNO COUNTY RECORDS, TAKEN TO BE S89°57'16"W.