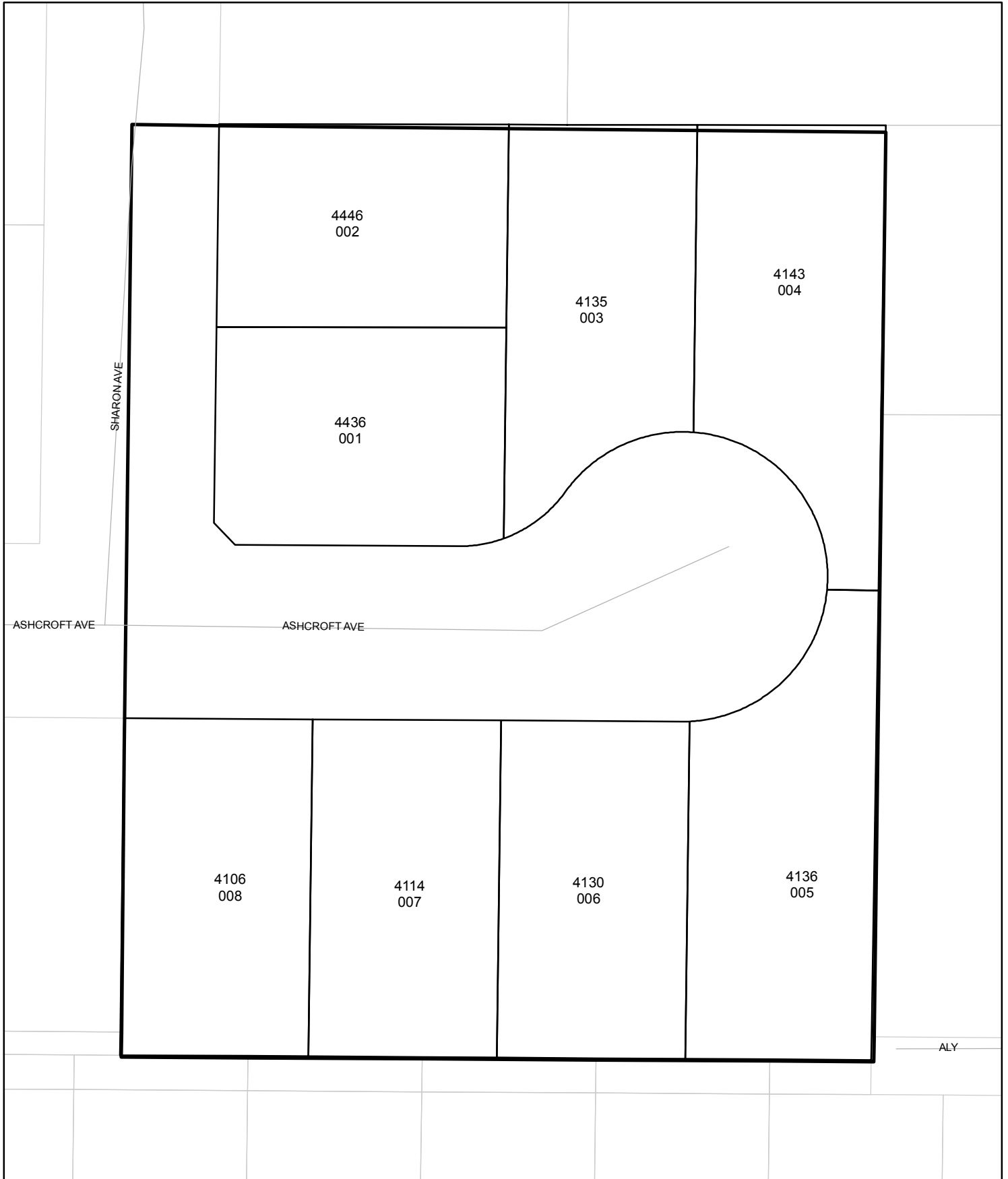




Street Names, Addresses and (Lot Numbers) for T5510

Prepared on Fri Jul 28 21:59:47 2017



EAST GETTYSBURG AVENUE

CENTER QUARTER CORNER SECTION 14, 13/20, M.D.B. & M., FALLS ON MANHOLE. FOUND 3" TIES, NE, NW AND SW. VERIFIED POSITION BY TIES ON FILE WITH FRESNO COUNTY SURVEYOR PER CORNER RECORD NO. 7023

LINE DATA:

LINE NUMBER	BEARING	DISTANCE
L 1	N 00°26'53" W	20.00'
L 2	S 45°14'14" E	10.38'
L 3	N 89°58'25" E	18.22'

CURVE DATA:

CURVE NUMBER	DELTA	RADIUS	ARC LENGTH	CHORD LENGTH
C 1	54°37'25"	45.00'	42.90'	41.29'
C 2	58°31'47"	50.00'	51.08'	48.88'
C 3	91°23'09"	50.00'	79.75'	71.56'
C 4	81°38'29"	50.00'	71.25'	65.37'
C 5	34°21'01"	45.00'	26.98'	26.58'
C 6	20°16'24"	45.00'	15.92'	15.84'
C 7	234°37'25"	50.00'	204.75'	88.85'
C 8	03°04'00"	50.00'	2.68'	2.68'

RADIAL DATA:

RADIAL NUMBER	RADIAL BEARING	RADIUS
R 1	S 20°43'17" E	45.00'
R 2	N 55°04'18" W	50.00'
R 3	N 03°27'29" E	50.00'
R 4	S 85°09'22" E	50.00'
R 5	S 03°30'53" E	50.00'

TRACT NO. 5510

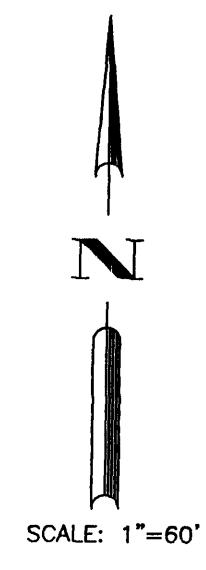
FINAL MAP OF
IN THE CITY OF FRESNO
FRESNO COUNTY, CALIFORNIA
SURVEYED AND PLATTED BY
HARBOUR & ASSOCIATES IN JULY, 2005
CONSISTING OF 2 SHEETS
SHEET 2 OF 2

NOTE:
SET 3/4" X 30" IRON PIPE, DOWN 0.5', TAGGED LS 5277, OR WILL BE SET WITHIN ONE YEAR OR ANY APPROVED EXTENSION THEREOF, FOR ALL LOT CORNERS, BLOCK CORNERS, AND THE BEGINNING AND ENDING OF ALL CURVES.

BASIS OF BEARINGS:
THE NORTH LINE OF THE SOUTHEAST QUARTER OF SECTION 14, 13/20, M.D.B. & M., WAS TAKEN TO BE N 89°35'00" E AS SHOWN ON PARCEL MAP NO. 98-15 RECORDED IN BOOK 59 OF PARCEL MAPS AT PAGE 33, FRESNO COUNTY RECORDS.

- LEGEND:**
- FOUND AND ACCEPTED MONUMENT AS DESCRIBED HEREON
 - ⊙ SET 3/4" X 30" IRON PIPE, UP 4" IN 6" PCC MONUMENT, DOWN 6", TAGGED LS 5277.
 - () INDICATES RECORD DATA AS SHOWN ON PARCEL MAP NO. 98-15 RECORDED IN BOOK 59 OF PARCEL MAPS AT PAGE 33, FRESNO COUNTY RECORDS.
 - < > INDICATES RECORD DATA AS SHOWN ON TRACT NO. 1376, ASHLAN PARK NO. 2, RECORDED IN VOLUME 17 OF PLATS AT PAGES 13 AND 14, FRESNO COUNTY RECORDS.
 - { } INDICATES RECORD DATA AS SHOWN TRACT NO. 1457, COLLEGE TERRACE, RECORDED IN VOLUME 17 OF PLATS PAGE 89, FRESNO COUNTY RECORDS.
 - PUE INDICATES PUBLIC UTILITY EASEMENT NOW OFFERED FOR DEDICATION FOR PUBLIC USE.
 - PE INDICATES PEDESTRIAN EASEMENT NOW OFFERED FOR DEDICATION FOR PUBLIC USE.
 - ▲ INDICATES NOW OFFERED FOR DEDICATION FOR PUBLIC STREET PURPOSES.
 - △ INDICATES PREVIOUSLY DEDICATED FOR PUBLIC STREET PURPOSES.
 - THE SHADED BLUE BORDER INDICATES THE LIMITS OF THIS SUBDIVISION.

MILLBROOK



NORTH

SOUTH QUARTER CORNER SECTION 14, 13/20, M.D.B. & M., FALLS ON MANHOLE. ESTABLISHED POSITION BY TIES ON FILE WITH FRESNO COUNTY SURVEYOR PER CORNER RECORD NO. 3648

EAST INDIANAPOLIS AVENUE

TRACT NO. 1457 COLLEGE TERRACE VOLUME 17 OF PLATS AT PAGE 89 FRESNO COUNTY RECORDS

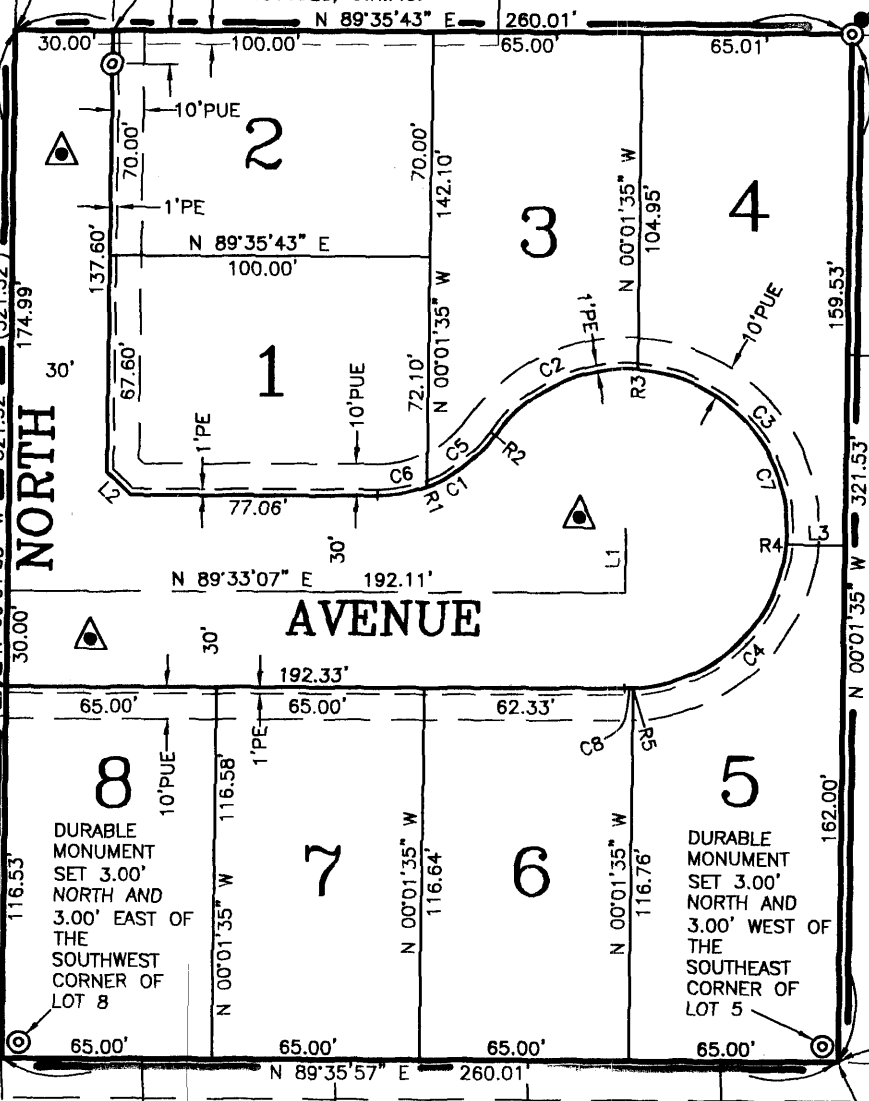
SHARON AVENUE

TRACT NO. 2140 COLBURN COLONY VOLUME 23 OF FRESNO COUNTY RECORDS

REMAINDER PARCEL MAP NO. 98-15 BOOK 59 OF PARCEL MAPS PAGE 33, FRESNO COUNTY RECORDS

EAST ASHCROFT AVENUE

NORTH AVENUE



TRACT NO. 1376 ASHLAN PARK NO. 2 VOLUME 17 OF PLATS AT PAGES 13 AND 14, FRESNO COUNTY RECORDS

TRACT NO. 1376 ASHLAN PARK NO. 2 VOLUME 17 OF PLATS AT PAGES 13 AND 14, FRESNO COUNTY RECORDS

EAST ASHLAN AVENUE

ASHLAN AVENUE

AVENUE

EAST QUARTER CORNER SECTION 14, 13/20, M.D.B. & M., FALLS ON MANHOLE. ESTABLISHED POSITION BY TIES ON FILE WITH FRESNO COUNTY SURVEYOR PER CORNER RECORD NO. 4784

CEDAR

SOUTH EAST QUARTER CORNER SECTION 14, 13/20, M.D.B. & M., FOUND FRESNO COUNTY BRASS CAP MONUMENT. ESTABLISHED POSITION BY TIES ON FILE WITH FRESNO COUNTY SURVEYOR. CORNER RECORD NO. 8081

REVISED 10-19-05
REVISED 9-21-05



Harbour & Associates
Civil Engineers
375 Woodworth Avenue, Suite 103 • Clovis, California 93612
(559) 325 7676 • Fax (559) 325 7699 • e-mail ha_oe@msn.com