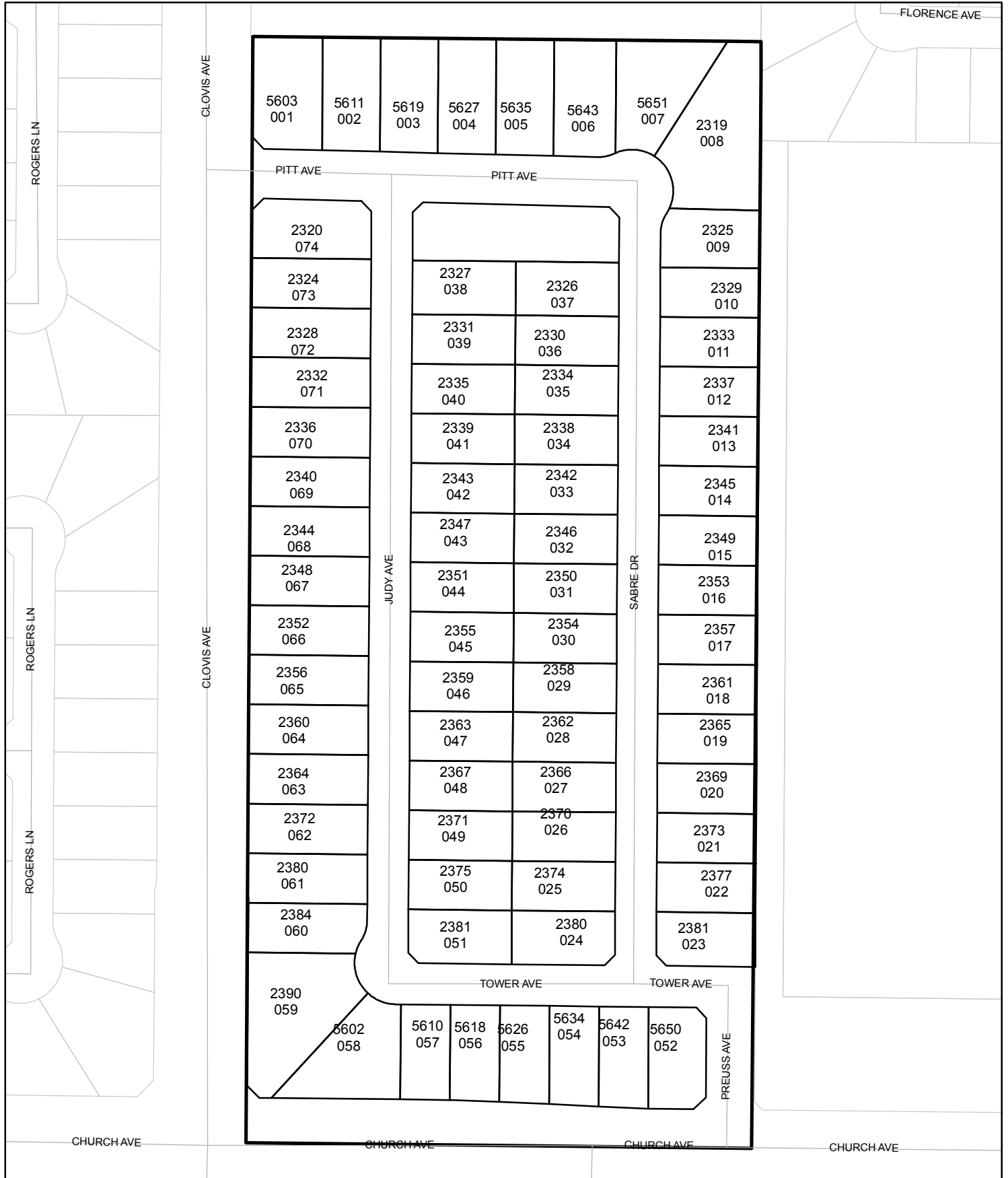




# Street Names, Addresses and (Lot Numbers) for T5503

Prepared on Tue Apr 02 13:45:52 2013

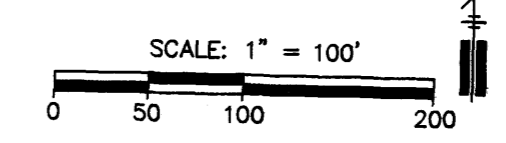
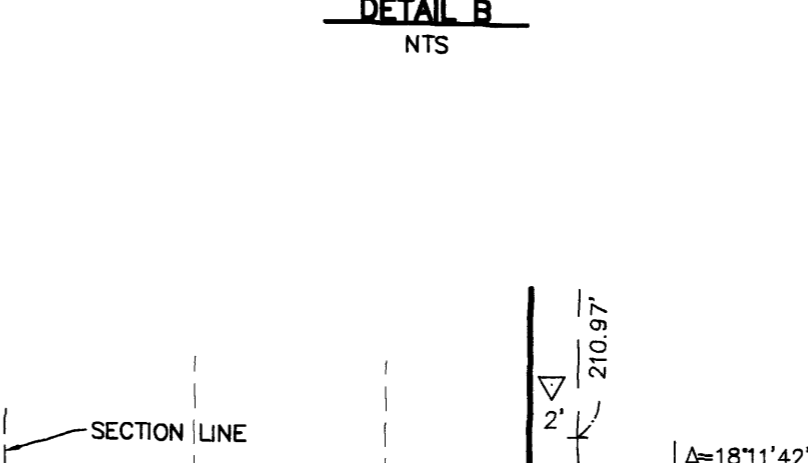
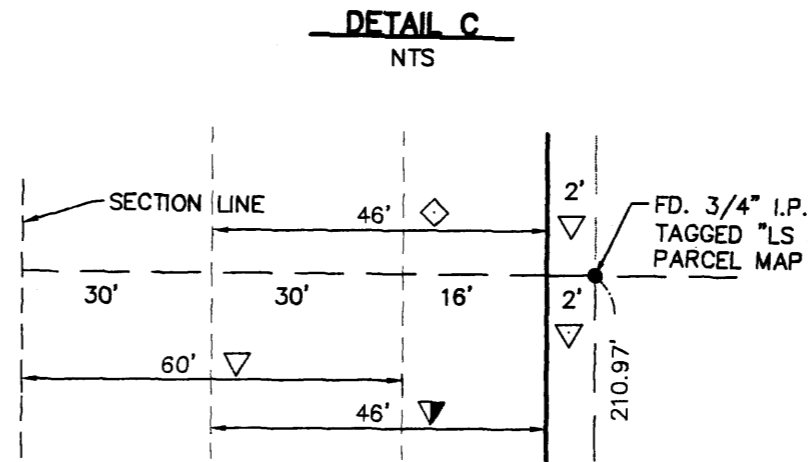
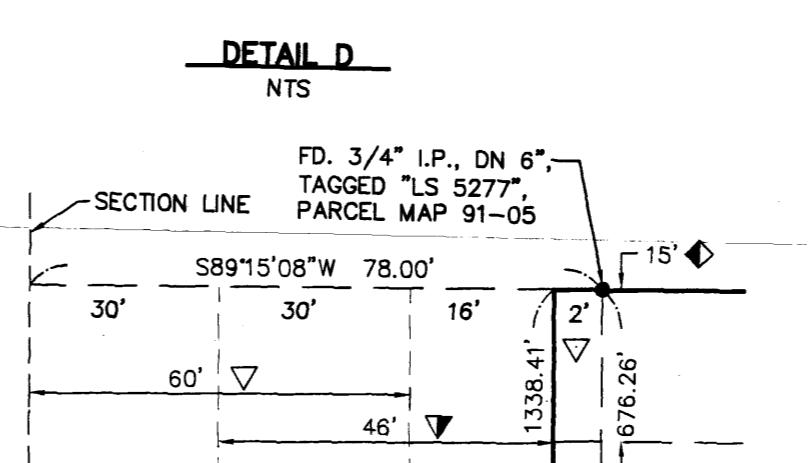
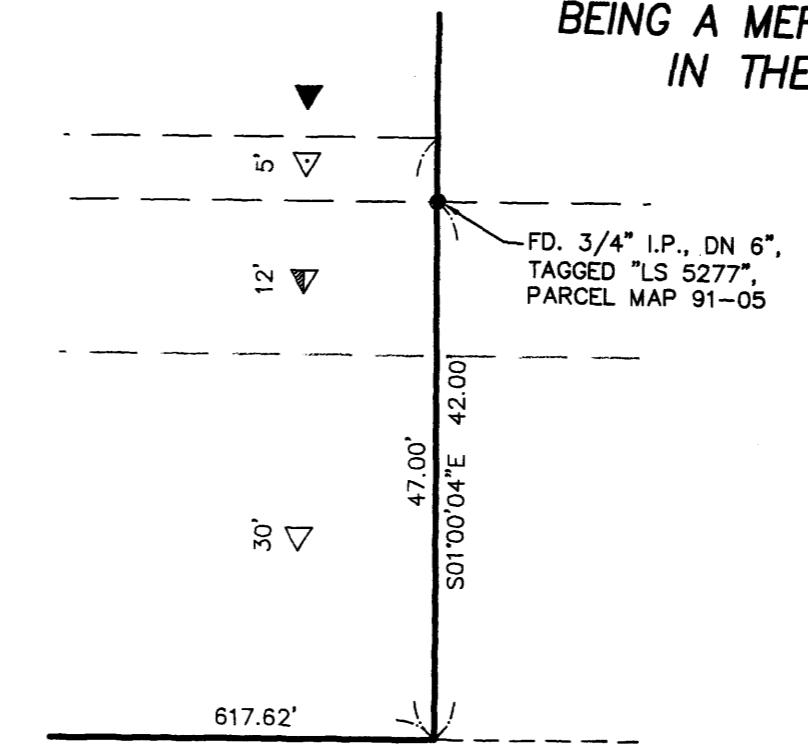


# FINAL MAP OF TRACT NO. 5503

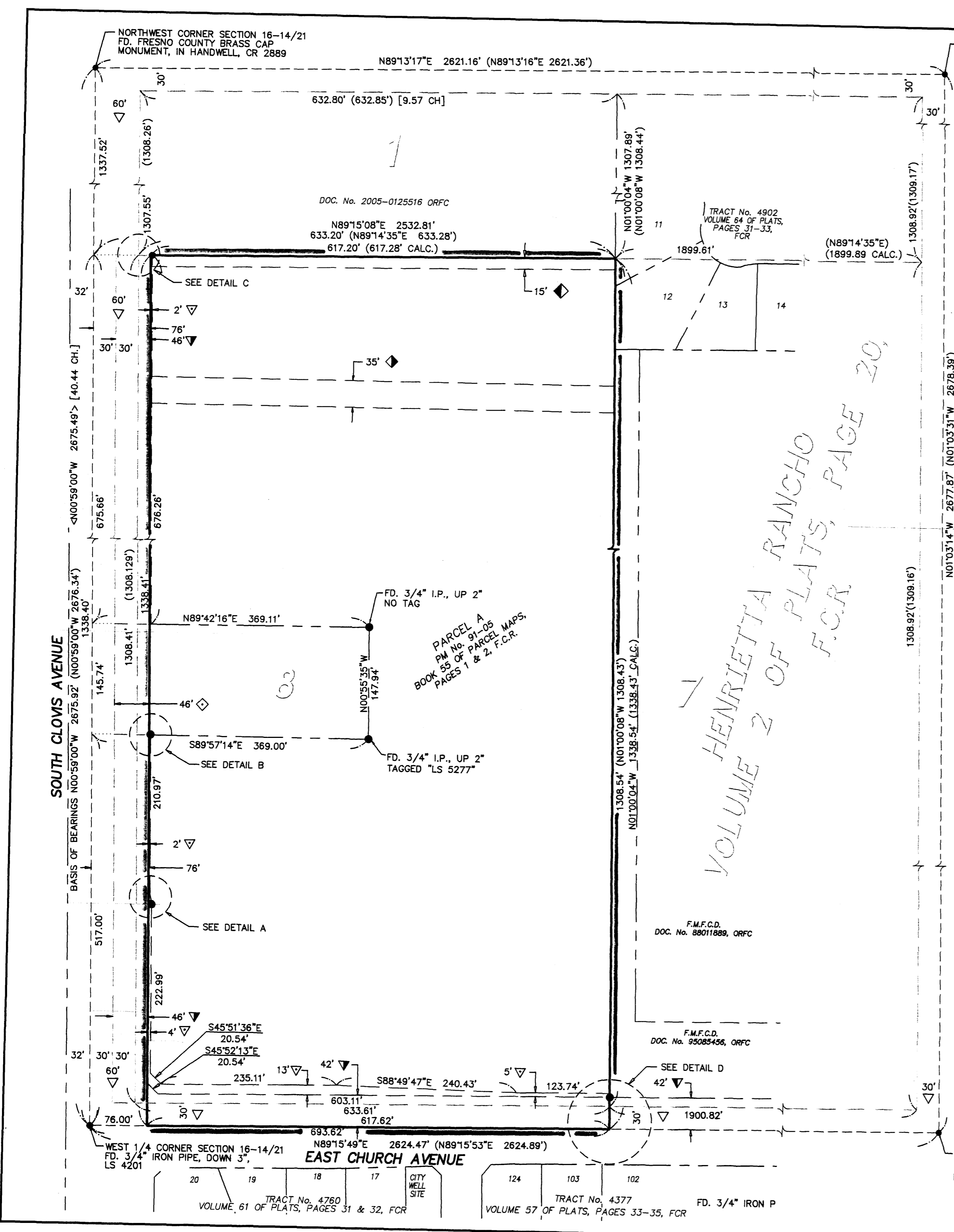
BEING A MERGER AND RESUBDIVISION OF LOT 8 OF HENRIETTA RANCHO IN THE CITY OF FRESNO, FRESNO COUNTY, CALIFORNIA SURVEYED AND PLATTED IN APRIL 2006 BY YAMABE & HORN ENGINEERING, INC. CONSISTING OF THREE SHEETS SHEET 2 OF 3

**BASIS OF BEARINGS:**  
THE WEST LINE OF THE SOUTHWEST QUARTER OF SECTION 16, T. 14 S., R. 21 E., M.D.B.&M., WAS TAKEN TO BE N 00°00' E, AS SHOWN ON TRACT NO. 1561, RECORDED IN VOLUME 18 OF PLATS, AT PAGE 52, O.F.C.R.

- LEGEND**
- FOUND 3/4" IRON PIPE, DOWN 0.5', UNLESS OTHERWISE NOTED
  - SET 3/4" IRON PIPE, 30" LONG, 4" UP IN 6" DIAMETER X 30" P.C.C. MONUMENT, DOWN 6" BELOW GROUND, TAGGED RCE 30501
  - ▼ NOW OFFERED FOR DEDICATION FOR PUBLIC STREET PURPOSES
  - ▽ PREVIOUSLY DEDICATED FOR PUBLIC STREET PURPOSES PER MAP OF "HENRIETTA RANCHO" RECORDED IN VOLUME 2 OF PLATS AT PAGE 20, F.C.R.
  - △ FMFCD STORMDRAIN PIPELINE AND DRAINAGE CHANNEL EASEMENT RECORDED December 12, 2007, AS DOC. No. 2007-1219213, ORFC
  - ◆ 15' WIDE STORM DRAIN EASEMENT SHOWN ON THE AMENDED PARCEL MAP No. 91-05 RECORDED IN BOOK 55 OF PARCEL MAPS AT PAGES 1 AND 2, F.C.R.
  - ◇ 35' WIDE STORM DRAIN EASEMENT RECORDED DECEMBER 30, 2005 AS INSTRUMENT No. 2005-0307022, ORFC
  - ▽ PREVIOUSLY DEDICATED FOR PUBLIC STREET PURPOSES PER THE AMENDED PARCEL MAP No. 91-05 RECORDED IN BOOK 55 OF PARCEL MAPS AT PAGES 1 AND 2, F.C.R.
  - ▼ PREVIOUSLY DEDICATED FOR PUBLIC STREET PURPOSES PER DEED RECORDED OCTOBER 2, 1987, AS INSTRUMENT No. 87120664, ORFC
  - ▼ PREVIOUSLY DEDICATED FOR PUBLIC STREET PURPOSES PER DEED RECORDED APRIL 21, 1971, IN BOOK 5886, PAGE 977, ORFC
  - ◇ PREVIOUSLY DEDICATED FOR PUBLIC STREET PURPOSES PER DEED RECORDED SEPTEMBER 18, 1970, IN BOOK 5821, PAGE 135, ORFC
  - C.R. DENOTES CORNER RECORDS ON FILE WITH FRESNO COUNTY SURVEYOR
  - I.P. IRON PIPE
  - ORFC OFFICIAL RECORDS FRESNO COUNTY
  - F.C.R. FRESNO COUNTY RECORDS
  - F.M.F.C.D. FRESNO METROPOLITAN FLOOD CONTROL DISTRICT
  - BCM BRASS CAP MONUMENT
  - ( ) RECORD DATA PER AMENDED PARCEL MAP No. 91-05 RECORDED IN BOOK 55 OF PARCEL MAPS AT PAGES 1 AND 2, F.C.R.
  - < > RECORD DATA PER RECORD OF SURVEY RECORDED IN BOOK 14 OF RECORD OF SURVEYS AT PAGE 2, F.C.R.
  - [ ] RECORD DATA PER "HENRIETTA RANCHO", ACCORDING TO THE MAP THEREOF RECORDED IN VOLUME 2 OF PLATS AT PAGE 20, F.C.R.
  - ▲▲▲ INDICATES RELINQUISHMENT OF DIRECT ACCESS RIGHTS
  - ▬▬▬ THE BLUE BORDER INDICATES LIMITS OF SUBDIVISION



PREPARED BY:  
**YAMABE & HORN ENGINEERING, INC.**  
1300 EAST SHAW AVENUE, SUITE 176  
FRESNO, CA 93710  
PH. 559-244-3123 FAX 559-244-3120  
10-18-07...05-346...05348FM2.DWG

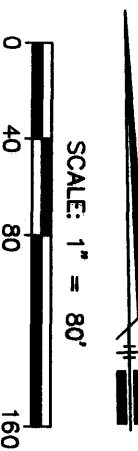
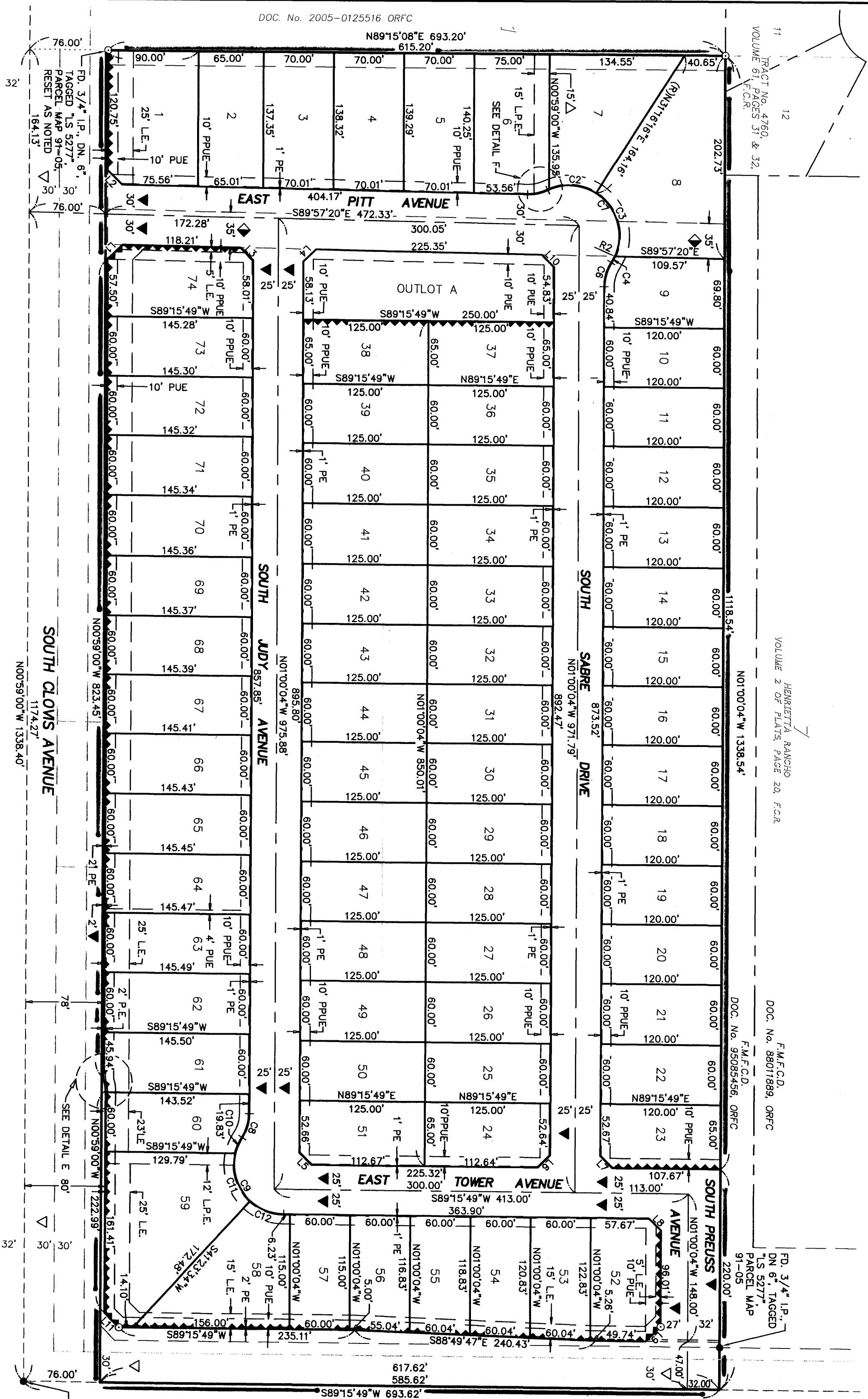
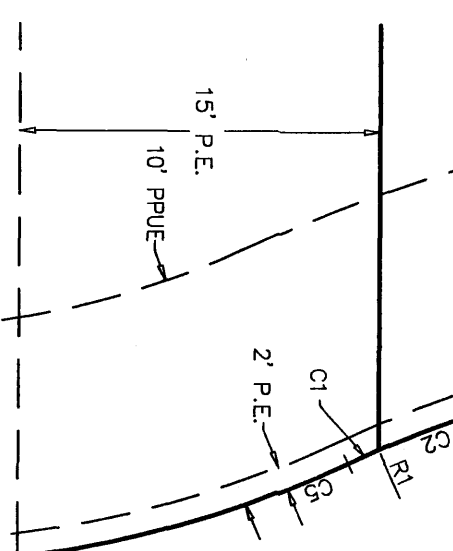
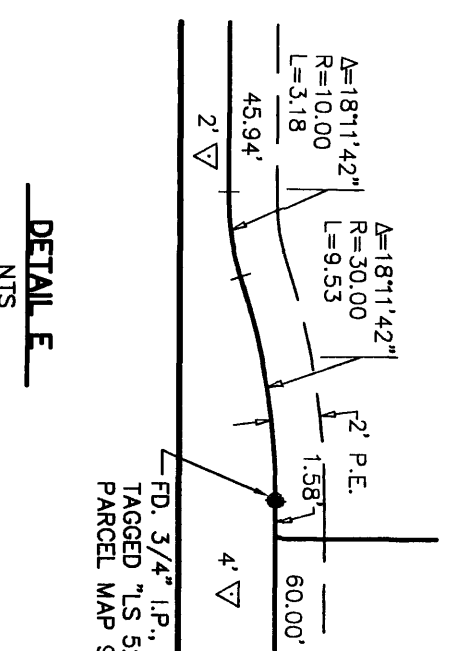


HENRIETTA RANCHO VOLUME 2 OF PLATS, PAGE 20, F.C.R.

LINE	LENGTH	BEARING
L1	20.27'	S44°31'50"W
L2	20.62'	S45°27'49"E
L3	17.34'	N45°28'42"W
L4	17.37'	S44°31'18"W
L5	17.48'	N45°05'53"W
L6	17.44'	N44°06'48"E
L7	17.48'	N45°31'37"W
L8	17.48'	S45°32'07"E
L9	20.68'	S44°07'53"W
L10	17.54'	N45°28'42"W

LINE	BEARING
R1	S44°52'42"E
R2	N66°22'36"W

CURVE	DELTA	RADIUS	LENGTH
C1	136.03°	50.00'	1.40'
C2	98.09°	50.00'	49.00'
C3	82°21'06"	50.00'	71.87'
C4	80°04'27"	50.00'	6.99'
C5	28°31'31"	45.00'	20.83'
C6	37°38'13"	45.00'	25.63'
C7	148°07'00"	50.00'	128.28'
C8	32°38'13"	45.00'	23.63'
C9	122°22'20"	50.00'	106.79'
C10	19°46'44"	50.00'	17.28'
C11	80°27'52"	50.00'	52.77'
C12	42°07'45"	50.00'	36.76'



# FINAL MAP OF TRACT NO. 5503

BEING A MERGER AND RESUBDIVISION OF LOT 8 OF HENRIETTA RANCHO IN THE CITY OF FRESNO, FRESNO COUNTY, CALIFORNIA SURVEYED AND PLATTED IN APRIL 2006 BY YAMABE & HORN ENGINEERING, INC. CONSISTING OF THREE SHEETS SHEET 3 OF 3

**LEGEND**

- FOUND 3/4" IRON PIPE, DOWN 0.5', UNLESS OTHERWISE NOTED
- SET 3/4" IRON PIPE, 30" LONG, 4" UP IN 6" DIAMETER X 30" P.C.C. MONUMENT, DOWN 6" BELOW GROUND, TAGGED RCE 30501
- ▲ NOW OFFERED FOR DEDICATION FOR PUBLIC STREET PURPOSES
- ▼ PREVIOUSLY DEDICATED FOR PUBLIC STREET PURPOSES PER MAP OF "HENRIETTA RANCHO" RECORDED IN VOLUME 2 OF PLATS AT PAGE 20, F.C.R.
- ◆ FMCO STORMDRAIN PIPELINE AND DRAINAGE CHANNEL EASEMENT RECORDED December 12, 2007, AS DOC. No. 2007-0219 BLS, ORFC
- ◇ 15' WIDE STORM DRAIN EASEMENT SHOWN ON THE AMENDED PARCEL MAP NO. 91-05 RECORDED IN BOOK 55 OF PARCEL MAPS AT PAGES 1 AND 2, F.C.R.
- ◇ 35' WIDE STORM DRAIN EASEMENT RECORDED DECEMBER 30, 2005 AS INSTRUMENT NO. 2005-0507022, ORFC
- ◇ PREVIOUSLY DEDICATED FOR PUBLIC STREET PURPOSES PER THE AMENDED PARCEL MAP NO. 91-05 RECORDED IN BOOK 55 OF PARCEL MAPS AT PAGES 1 AND 2, F.C.R.
- ◇ PREVIOUSLY DEDICATED FOR PUBLIC STREET PURPOSES PER DEED RECORDED OCTOBER 2, 1987, AS INSTRUMENT NO. 87120664, ORFC
- ◇ PREVIOUSLY DEDICATED FOR PUBLIC STREET PURPOSES PER DEED RECORDED APRIL 21, 1971, IN BOOK 5886, PAGE 977, ORFC
- ◇ PREVIOUSLY DEDICATED FOR PUBLIC STREET PURPOSES PER DEED RECORDED SEPTEMBER 18, 1970, IN BOOK 5821, PAGE 135, ORFC
- ◇ DENOTES CORNER RECORDS ON FILE WITH FRESNO COUNTY SURVEYOR
- ◇ IRON PIPE
- ◇ OFFICIAL RECORDS FRESNO COUNTY
- ◇ F.C.R. FRESNO COUNTY RECORDS
- ◇ BCM BRASS CAP MONUMENT
- ◇ PUBLIC UTILITY EASEMENT NOW OFFERED FOR DEDICATION FOR PUBLIC USE
- ◇ PUBLIC LANDSCAPE EASEMENT NOW OFFERED FOR DEDICATION FOR PUBLIC USE
- ◇ PUBLIC PEDESTRIAN EASEMENT NOW OFFERED FOR DEDICATION FOR PUBLIC USE
- ◇ PLANTING AND PUBLIC UTILITY EASEMENT NOW OFFERED FOR DEDICATION FOR PUBLIC USE
- ◇ LANDSCAPE AND PEDESTRIAN WALKWAY EASEMENT NOW OFFERED FOR DEDICATION FOR PUBLIC USE
- ◇ RECORD DATA PER AMENDED PARCEL MAP NO. 91-05 RECORDED IN BOOK 55 OF PARCEL MAPS AT PAGES 1 AND 2, F.C.R.
- ◇ RECORD DATA PER RECORD OF SURVEY RECORDED IN BOOK 14 OF RECORD OF SURVEYS AT PAGE 2, F.C.R.
- ◇ RECORD DATA PER "HENRIETTA RANCHO" ACCORDING TO THE MAP THEREOF RECORDED IN VOLUME 2 OF PLATS AT PAGE 20, F.C.R.
- ◇ INDICATES RELINQUISHMENT OF DIRECT ACCESS RIGHTS
- ◇ THE BLUE BORDER INDICATES LIMITS OF SUBDIVISION

**NOTE**

1. OUTLOT "A" IS TO BE DEDICATED IN FEE TO THE CITY OF FRESNO FOR LANDSCAPING AND RECREATIONAL PURPOSES SUBJECT TO CITY ACCEPTANCE OF THE DEVELOPER INSTALLED IMPROVEMENTS
2. SET 3/4" X 30" IRON PIPE, DOWN 6" TAGGED RCE 30501 AT ALL LOT CORNERS, ANGLE POINTS AND POINTS OF CURVATURE

PREPARED BY:  
**YAMABE & HORN ENGINEERING, INC.**  
 1500 EAST FRESNO AVENUE, SUITE 178  
 PH. 559-244-3123 FAX 559-244-3120  
 10-18-07-05-346-05346992.DWG